

SR14SQLEDOA

APPLICATION

14" square recessed LED downlight LED features soffit/area light for optimal performance.

FEATURES

Efficient, powerful LED light source, designed to exceed 50,000 hours of life (**L70**). Multi-Bar mounting brackets. All LED modules and drivers are replaceable and up-gradeable. New and Retrofit/Remodeler options. Wet location use screws fasteners. (4)

FINISH

A variety of architectural powdercoat and anodized finishes are available. Matte White flange is standard.

ELECTRONICS

LED module features high brightness white Nichia LEDs. 3-step MacAdam Ellipse binning and CRI 84 minimum. Variety of electronic 120V/277V and dimming drivers.

CONSTRUCTION

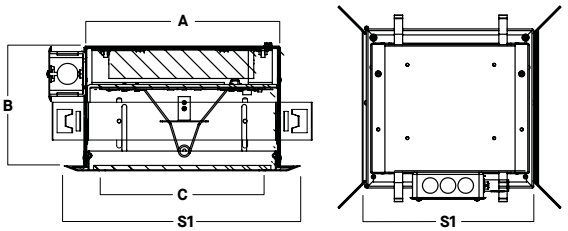
Housing constructed of .050 5052-H32 aluminum. Trim fabricated from aluminum extrusion and finished to specification.

CODE COMPLIANCE

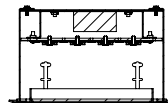
BAA Compliant. Non-IC rated. ETL certified to meet US and Canadian standards. Suitable for dry or damp locations. Optional Wet location. Manufactured and tested to UL standards No. 1598/8750.

WATTAGE TO LUMENS UPDATE

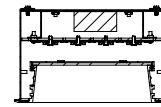
CURRENT PART NUMBER EXAMPLE	PREVIOUS PART NUMBER EXAMPLE	SOURCE LUMENS ¹	SYSTEM WATTS
SR14SQLEDOA11L	SR14SQLEDOA11W	1100	14W
SR14SQLEDOA22L	SR14SQLEDOA18W	2200	26W
SR14SQLEDOA33L	SR14SQLEDOA25W	3300	37W
SR14SQLEDOA44L	SR14SQLEDOA34W	4400	47W



A	B	C	TRIM	S1
13.9	5.1	12.3	FT1414	13.9
13.9	5.1	12.3	RT1414	13.4



FT-Flush Trim/Lens



RT-Regressed Trim/Lens



Retrofit/Remodeler with Flush Trim

SERIES	LUMENS ¹	CCT	DRIVER / VOLTAGE ²	OPTIONS ³	TRIM	FINISH ⁵	OPTIONS			
SR14SQLEDOA	11L 22L 33L 44L	1100 Lm 2200 Lm 3300 Lm 4400 Lm	30K 35K 40K 50K	3000K 3500K 4000K 5000K	E_ Electronic Driver 1 120V DS10_ 10%, 0-10V 2 277V	BH27 ⁴ 27" Solid Bars H12 12" - 24" Expandable Bars H06 6" - 12" Expandable Bars CB24 24" C-Channel Bars FS Fusing EM Integral Emergency Battery CR Corrosion Resistant RM Remodeler Housing	FLUSH TRIM FT1414 Flush Extruded Aluminum Door REGRESSED TRIM RT1414 Regressed Extruded Aluminum Door	MW ⁶ Matte White MB Matte Black PT Platinum CC ⁶ Custom Color REGRESSED FINISH MW ⁶ Matte White MB Matte Black PT Platinum Silver CC ⁶ Custom Color	TRIM / FLANGE FINISH MW ⁶ Matte White MB Matte Black PT Platinum CC ⁶ Custom Color WM ⁷ White Flange MF Matching Flange	FO ⁸ Matte White Acrylic Lens SO 90% Efficient Solite Lens WL ⁹ Wet Location

EXAMPLE: SR14SQLEDOA44L35KE1BH27/FT1414MW/FO

NOTES:
1 Nominal Source Lumens 2 Contact Factory for Additional Options 3 See Product Options Page for Details 4 Standard Bar Hangers 5 Contact Factory for Special Finishes 6 Standard Finish 7 For use with Non Matte White Trim Finish 8 Standard Lens 9 Trim Secured with 4 Screws



PROJECT: _____
QUANTITY: _____ TYPE: _____

