

3" ROUND DIRECT PICO SERIES



C0310XT - WALL MOUNT

APPLICATION

3" round x 10" high XT series direct downlight cylinder luminaire.

FEATURES

Spectrum's Cylinder series provides traditional architectural style with high performance and energy efficient illumination. Rugged design with flexible mounting, finish and LED options make these extremely versatile fixtures. Integral LED driver. Quick change LED module with interchangeable optics for job site flexibility and fixture upgrade.

FINISH

Multi-stage polyester powder-coat process applied on our dedicated paint lines. See mounting and color pages for standard finishes. All exposed materials are chromate pretreated to resist corrosion.

ELECTRONICS

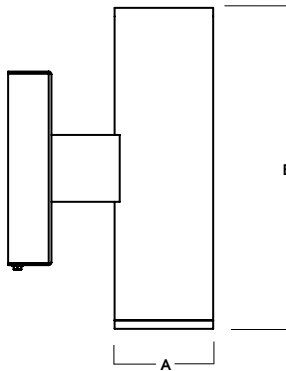
LED system features Xicato LED module with proprietary phosphor technology that provides consistent stable color with CCT control of +/- 100K over life of the light engine. Base CRI is 83 with 2-step MacAdam Ellipse binning. High CRI is 98 with 1 x 2-step MacAdam Ellipse binning. Variety of electronic 120V/277V and dimming drivers.

CONSTRUCTION

Fabricated seamless aluminum fixture housing. Specular primary reflector provides high efficiency illumination. Stainless steel hardware with galvanized brackets to resist corrosion.

CODE COMPLIANCE

BAA compliant. ETL certified to meet US and Canadian standards. Suitable for dry or damp locations. Wet Location Option. Manufactured and tested to UL standards No. 1598/8750.



A	B
3.3 83.8 mm	10.6 269.2 mm

Fixture Weight: 4.5 lbs

LUMENS / WATTAGE DATA				
PART NUMBER	SOURCE LUMENS ¹	DELIVERED LUMENS ²	SYSTEM WATTS ³	LPW
C0310XT7L	700	506	6.2	82
C0310XT10L	1000	675	9.1	74

SERIES	LUMENS ¹	CCT	OPTICS	DRIVER / DIMMING ⁵	OPTIONS ⁶	MOUNTING ¹⁰	FINISH ¹¹
C0310XT	7L 700 Lm	83 CRI	XN ⁴ 12°	EX Electronic Driver, 120V/277V DS10X 10%, 0-10V, 120V/277V DS2W1 ELV/MLV, 120V	WL Wet Location CR Corrosion Resistant	WM3 Wall Mount 3" Extension	MW ¹² Matte White
	10L 1000 Lm	27K 2700K	ND 30°				MB ¹² Matte Black
		30K 3000K	MD 33°				PT ¹² Platinum Silver
		35K 3500K	WD 38°				CC Custom Color
40K 4000K							
		98 CRI					See Page 4 for Full Range of Color Options (83-90095)
	27HK 2700K				NL ⁷ No Lens	EMRM 7W Remote EM	
	30HK 3000K				GL ⁸ Clear Glass Lens	EMEN 7W Remote with Enclosure	
	35HK 3500K				SO ⁹ Micro Prism Solite™ Lens		
	40HK 4000K						

EXAMPLE: C0310XT10L30KNDEX/WL/GL/WM3/MW

NOTES:

1 Nominal Source Lumens At Any CCT 2 Nominal Delivered Lumens at 83 CRI at Any CCT with MD-SO 3 At 83 CRI 4 XN with 98 CRI Option Pending 5 Contact Factory for Additional Options
6 See Product Options Page for Details 7 Not Available with WL 8 Standard Lens for XN, ND 9 Standard Lens for MD, WD 10 See Mounting Page for Details on Components and Finishes
11 See Color Page for More Options/Consult Factory for Special Finishes 12 Standard Finishes



PROJECT: _____
TYPE: _____



Dimensions and values shown are nominal. Spectrum Lighting continually works to improve products and reserves the right to make changes which may alter the performance or appearance of products.

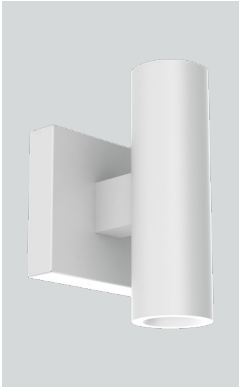
3" ROUND DIRECT

PICO SERIES / FIXTURE OPTIONS

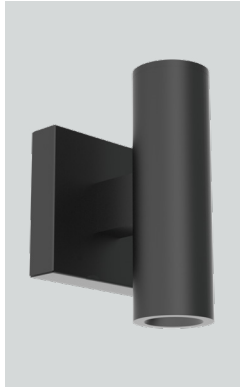


STANDARD FINISHES

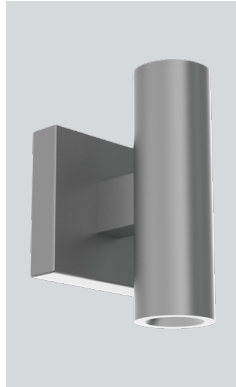
MW
MATTE WHITE



MB
MATTE BLACK

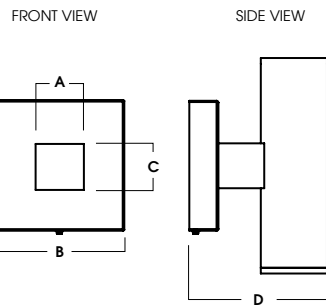
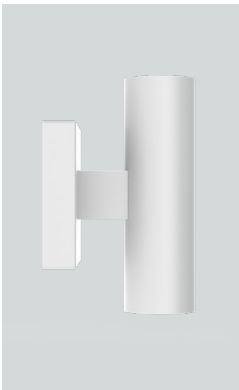


PT
PLATINUM SILVER



WALL MOUNT DETAIL

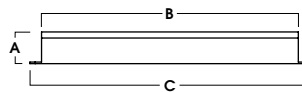
WM3
WALL MOUNT 3" EXTENSION



A	B	C	D
1.4	6.4	2.2	6.3
35.6 mm	162.6 mm	55.9 mm	160.0 mm

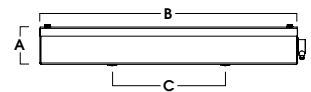
EMERGENCY BATTERY OPTIONS

EMRM* - 7W REMOTE EMERGENCY BATTERY
(50' MAX)



A	B	C
1.3	12.6	13.0

EMEN* - 7W REMOTE EMERGENCY BATTERY
WITH ENCLOSURE (50' MAX)



A	B	C
2.0	17.0	6.2

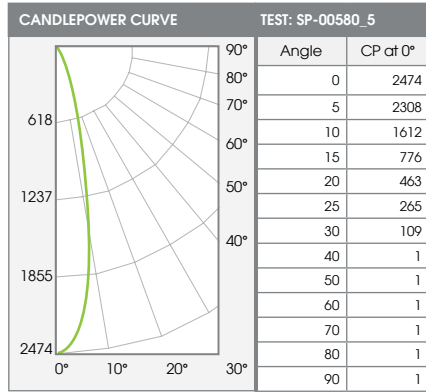
*OTHER EM BATTERY SIZES AVAILABLE. CONSULT FACTORY

3" ROUND DIRECT

PICO SERIES / PHOTOMETRIC DATA



C0310XT-10LxxK-NDEX-GLxxMW



Beam Angle	Lumens	%
0-10	196	33%
0-20	440	74%
0-30	568	95%
0-40	590	99%
0-60	592	99%
0-80	594	100%
0-90	595	100%
Total Lumens	595	100%

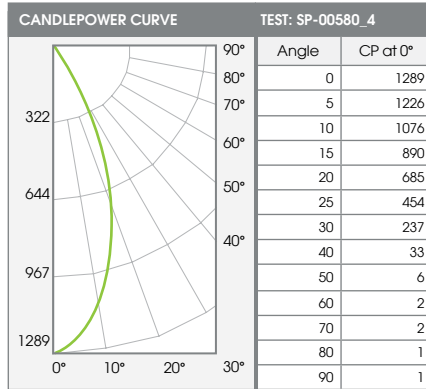
10L NARROW - 83 CRI

Mounting Height*	FC at Center	Diameter of Beam**	FC at Beam**
5.5'	82	2.4'	39
6.5'	59	2.8'	28
7.5'	44	3.3'	21
8.5'	34	3.7'	16
10.0'	25	4.3'	12
12.0'	17	5.2'	8
14.0'	13	6.1'	6
16.0'	10	6.9'	5

* From aperture to horizontal surface below.
** At IESNA defined Beam Angle, to 50% Max. CP.

Delivered Lumens: 595 CP @ 0° (Nadir): 2474 Spacing Ratio: 0.42
 Luminaire Watts: 9.1 Beam Angle: 24.5° Output Multipliers: 7L x 0.75
 LER: 65 CRI: 83

C0310XT-10LxxK-MDEX-SOxxMW



Beam Angle	Lumens	%
0-10	113	17%
0-20	364	54%
0-30	580	86%
0-40	654	97%
0-60	669	99%
0-80	673	100%
0-90	675	100%
Total Lumens	675	100%

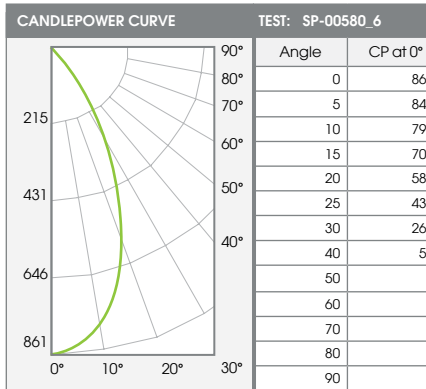
10L MEDIUM - 83 CRI

Mounting Height*	FC at Center	Diameter of Beam**	FC at Beam**
5.5'	43	4.2'	19
6.5'	31	5.0'	13
7.5'	23	5.7'	10
8.5'	18	6.5'	8
10.0'	13	7.6'	6
12.0'	9	9.1'	4
14.0'	7	10.7'	3
16.0'	5	12.2'	2

* From aperture to horizontal surface below.
** At IESNA defined Beam Angle, to 50% Max. CP.

Delivered Lumens: 675 CP @ 0° (Nadir): 1289 Spacing Ratio: 0.68
 Luminaire Watts: 9.1 Beam Angle: 41.7° Output Multipliers: 7L x 0.75
 LER: 74 CRI: 83

C0310XT-10LxxK-WDEX-SOxxMW



Beam Angle	Lumens	%
0-10	79	13%
0-20	276	46%
0-30	478	80%
0-40	571	96%
0-60	593	99%
0-80	596	100%
0-90	597	100%
Total Lumens	597	100%

10L WIDE - 83 CRI

Mounting Height*	FC at Center	Diameter of Beam**	FC at Beam**
5.5'	28	5.1'	12
6.5'	20	6.1'	8
7.5'	15	7.0'	6
8.5'	12	7.9'	5
10.0'	9	9.3'	4
12.0'	6	11.2'	2
14.0'	4	13.1'	2
16.0'	3	14.9'	1

* From aperture to horizontal surface below.
** At IESNA defined Beam Angle, to 50% Max. CP.

Delivered Lumens: 597 CP @ 0° (Nadir): 861 Spacing Ratio: 0.8
 Luminaire Watts: 9.1 Beam Angle: 50.0° Output Multipliers: 7L x 0.75
 LER: 66 CRI: 83

COLOR OPTIONS - POWDER COAT PAINT FINISHES

NOTE: NO PRINTED IMAGE CAN EQUAL THE EXACT COLOR OF FINISH ON METAL.
SEE INDIVIDUAL SPECIFICATION SHEETS OR CONSULT FACTORY FOR ADDITIONAL INFORMATION.



STANDARD CORD / STEM / CANOPY FINISHES

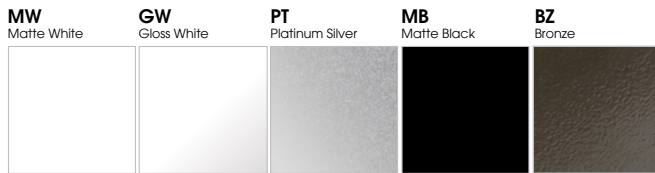
FIXTURE COLOR	STANDARD CORD COLOR	STANDARD CANOPY / STEM COLOR
Matte White, Textured White	Matte White	Matte White
Gloss White	Matte White	Gloss White
Matte Black, Textured Black	Matte Black	Matte Black
All Others	Matte Black	Same Color as Fixture
Custom Color	Contact Factory	Contact Factory

PAINT TIMES

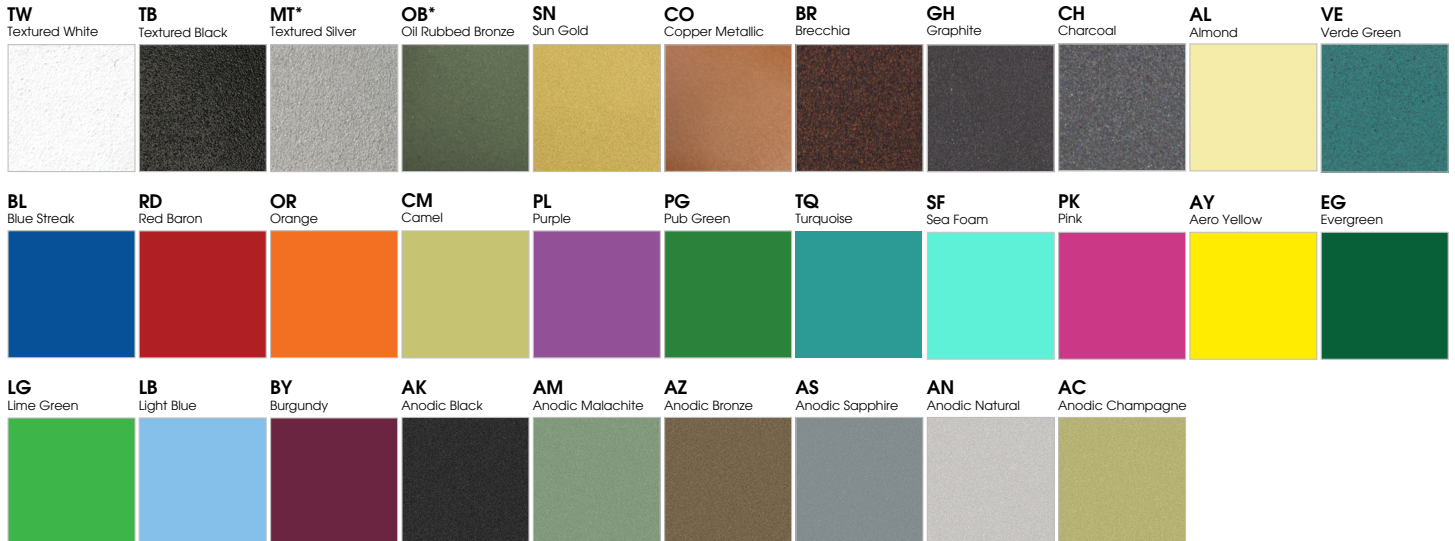
TIER	COST	AVERAGE PAINT TIME*
Tier 1 - Standard Finishes	\$	⌚
Tier 2 - Typical Finishes	\$\$	⌚⌚
Custom Color	Contact Factory	Contact Factory

*CONTACT FACTORY FOR SPECIFIC PRODUCT LEAD TIMES

TIER 1 - STANDARD FINISHES



TIER 2 - TYPICAL FINISHES



CUSTOM COLOR FINISHES

CONTACT FACTORY

CC
Custom Color



*UNAVAILABLE FOR WET LOCATION