



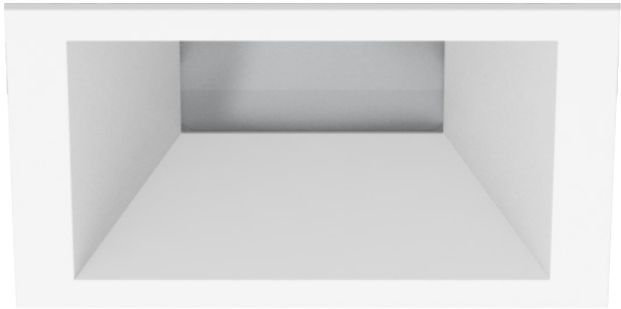
PROJECT: _____
 QUANTITY: _____ TYPE: _____



4" SQUARE DEEP DOWNLIGHT WILDLIFE FRIENDLY

UNIVERSAL HOUSINGS WITH INTERCHANGEABLE TRIMS

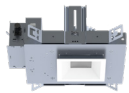
Spectrum's Enduro 4" recessed square downlight series features a trim and variety of options for accent and general illumination.



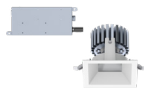
LUMENS AND WATTAGE CHART					
PART NUMBER	LUMENS	SOURCE LUMENS ¹	DELIVERED LUMENS ²	SYSTEM WATTS	LPW
SDD4F	TA5L	500	445	15.8	28
SDD4F	TD10L	1000	722	15.9	45

AVAILABLE HOUSING TYPES

SS4MO - New Construction



SS4MR - Remodel Construction



FIXTURE HOUSING SPECIFICATION

SERIES	LUMENS ¹	DRIVER / DIMMING / VOLTAGE	OPTIONS	MOUNTING
SS4MO New Construction	AMBER ONLY²	DO10 1%, 0-10V	EB Black Housing PR³ Consult Factory	H12⁶ 12" - 24" Expandable Bars BH27 27" Solid Bars CB24 24" C-Channel Bars
SS4MR Remodel Construction	TA5L 500 Lm Amber Only	DS2W ELV/MLV, 120V		
	DUAL CIRCUIT⁴			
	TD10L CIR 1 1000 Lm at 3000K CIR 2 500 Lm Amber Only			

- Full Shielding.
- Die-cast aluminum trim with a wide variety of options.
- Deep regressed trim.
- Universal housing accepts all trim types, including N-Line trimless.
- 5 year warranty on fixture and electronics.
- Sustainable fixture.

AVAILABLE TRIM / MODULE TYPES

SDD4F



TRIM / MODULE SPECIFICATION

TRIM	CCT	FINISH	FLANGE FINISH	LENS ⁹	OPTIONS
SDD4F Downlight	AMBER ONLY²	MW⁷ Matte White MB Matte Black PT Platinum Silver BZ Bronze CH Charcoal OB Oil Rubbed Bronze AS Sapphire AM Malachite SN Sun Gold CO Copper Metallic GH Graphite CC⁸ Custom Color	WF White Flange MF Matching Flange	SO¹⁰ Micro Prism Solite™ Lens GL Clear Glass Lens	PR³ Consult Factory
	DUAL CIRCUIT⁴				
	TD10L30K CIR 1 1000 Lm at 3000K CIR 2 500 Lm Amber Only				

EXAMPLE: SS4MOTA5LDS2W1/H12/SDD4FTA5LAMBMMWFFSO

EXAMPLE: SS4MOTD10LDS2W1/H12/SDD4FTD10L30KMWWFSSO

NOTES:

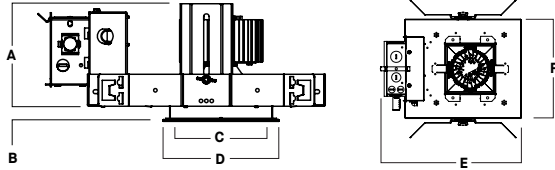
1 Nominal Source Lumens 2 Nominal Delivered Lumens 3 Specify with TA Only 4 Specify with TD Only, TD/Dual Circuit Option Requires Dedicated on Site Controls by Others, Controls by Others Are Not to Allow Both Circuits to be Energized Simultaneously, Consult Factory for More Information 5 Contact Factory 6 Standard Bar Hangers 7 Standard Finish 8 Contact Factory for Special Finishes 9 Lens is Required 10 Standard Lens



HOUSING DIMENSIONS

SS4MO - NEW CONSTRUCTION

Non-IC rated, thermally protected frame-in kit for new construction. Non-IC designation requires insulation must be minimum of 3" from housing.



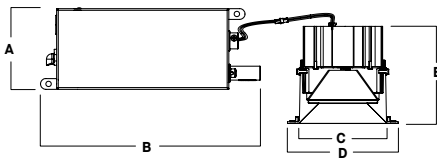
A	B	C	D	E	F
4.8	.625	4.4	5.4	13.1	9.5
121.9 mm	15.2 mm	117.8 mm	137.2 mm	332.7 mm	241.3 mm

Fixture Weight: 7 lbs

Ceiling Cutout: 5" Sq

SS4MR - REMODEL CONSTRUCTION

Non-IC rated frame-in kit for existing construction. Non-IC designation requires insulation must be minimum of 3" from housing.



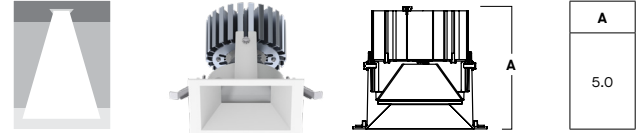
A	B	C	D	E
3.8	10.2	4.4	5.4	5.0
96.5 mm	259.1 mm	117.8 mm	137.2 mm	127.0 mm

Fixture Weight: 5 lbs

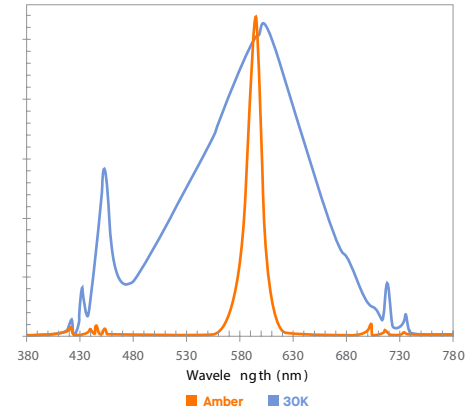
Ceiling Cutout: 5" Sq

TRIM / MODULE DATA

SDD4F - DOWNLIGHT MODULE



SPECTRAL POWER DISTRIBUTION COMPARISON



FEATURES

FRAME-IN KIT

Precision Die-formed 20 gauge galvanized steel housing and integral junction box with (3) 5/8", (3) 7/8" and (2) 1 1/8" knockouts. Junction box capacity: 8 12AWG rated for 90 °C. Tool-less driver and junction box access for ease of maintenance. Posi-loc trim retention springs for 5/8"-1" ceiling thickness.

MOUNTING

A variety of mounting bars are available (excluding remodel). Ceiling materials must be rigid to support luminaire frame.

TRIM

Self-flanged, one-piece, die-cast aluminum finished in a variety of powdercoat options. Designed for wet location. Specify finish and flange finish. For trimless options see N-Line.

REMODEL

Features tethered power supply and junction box with sheathed wire.

ELECTRONICS

Full shielding. Single circuit, amber only option is available. Amber LEDs are monochromatic, narrow spectral bandwidth that only emit long wavelengths >560 nm and <625 nm. Proprietary 2-circuit LED system: Circuit 1 is 3000K at 1000 lumens, Circuit 2 is Amber only at 500 lumens. 3000K white light is 3-step MacAdam Ellipse binning, with 80+ CRI.

EMERGENCY

Contact Factory.

COLOR VARIATION

Standard CRI (80) within 3-step MacAdam Ellipse.

LISTINGS

ETL Certified to meet US and Canadian Standards. Manufactured and tested to UL standard No. 1598/8750. BAA compliant. Suitable for wet locations. International Dark-Sky Association approved fixture.

WARRANTY

Fixtures, LEDs and drivers carry 5 year Spectrum warranty, as well as individual OEM warranty. Warranty is 5 years from date of manufacturing. LED system rated for operation in an ambient temperatures up to 25 °C.



PHOTOMETRIC DATA - 4" SQUARE DEEP DOWNLIGHT

SS4Mx TA5L xx xx SDD4x TA5LAMB xx xx SO

CANDLEPOWER CURVE TEST SP-01345_2	INTENSITY CANDELA 0° AZIMUTH	ZONAL LUMENS	SINGLE UNIT: PERFORMANCE HORIZONTAL FOOTCANDLES INITIAL DOWNLIGHT ONLY				MULTIPLE UNITS: PERFORMANCE 80/50/20% REFLECTANCES HORIZONTAL FOOTCANDLES AND WATTS/SQ FT					
			Mounting Distance	FC at Beam Center	Diameter at Beam Angle	FC at Beam Edge	Ceiling Height	Fixture Spacing	RCR 3		RCR 5	
	0°	0° - 10° 25 6%	5.5'	8 fc	8.6'	2 fc	9'	6'	12	0.54	7	0.37
	0°	0° - 20° 92 21%	6.5'	6 fc	10.2'	1 fc	12'	8'	6	0.25	3	0.18
	5°	0° - 30° 184 41%	7.5'	5 fc	11.7'	1 fc	16'	12'	3	0.13	2	0.09
	15°	0° - 40° 269 61%	8.5'	4 fc	13.3'	1 fc	Delivered Illuminance Rating: (DIR) 23 FC per W/Sq. Ft. 19 FC per W/Sq. Ft.					
	25°	0° - 60° 370 83%	10.0'	3 fc	15.6'	1 fc	Recessed mounting Square rooms used for multiple units: RCR 3: Length & Width = Ceiling Ht. - 2.5' x 3.33 RCR 5: Length & Width = Ceiling Ht. - 2.5' x 2.00 * Average Initial Footcandles at 2.5' Above Floor					
	35°	0° - 80° 414 93%	12.0'	2 fc	18.7'	0 fc						
	45°	0° - 90° 431 97%	14.0'	1 fc	21.9'	0 fc						
	55°	Total 445 100%	16.0'	1 fc	25.0'	0 fc						
	90°											

Delivered Lumens: 445
Luminaire Watts: 15.8
LER: 28.16

CP at 0° (Nadir): 255

Beam Angle: 76°
Spacing Ratio: 1.07

Lumen Multiplier: N/A
CCT Multiplier: N/A

CR: N/A, Amber Light

SS4Mx TD10L xx xx RDD4x TD10L30K xx xx SO

CANDLEPOWER CURVE TEST SP-01346_2	INTENSITY CANDELA 0° AZIMUTH	ZONAL LUMENS	SINGLE UNIT: PERFORMANCE HORIZONTAL FOOTCANDLES INITIAL DOWNLIGHT ONLY				MULTIPLE UNITS: PERFORMANCE 80/50/20% REFLECTANCES HORIZONTAL FOOTCANDLES AND WATTS/SQ FT					
			Mounting Distance	FC at Beam Center	Diameter at Beam Angle	FC at Beam Edge	Ceiling Height	Fixture Spacing	RCR 3		RCR 5	
	0°	0° - 10° 44 6%	5.5'	15 fc	8.3'	4 fc	9'	6'	21	0.54	12	0.38
	0°	0° - 20° 162 22%	6.5'	10 fc	9.8'	3 fc	12'	8'	10	0.25	6	0.18
	5°	0° - 30° 322 45%	7.5'	8 fc	11.4'	2 fc	16'	12'	5	0.13	3	0.09
	15°	0° - 40° 468 65%	8.5'	6 fc	12.9'	2 fc	Delivered Illuminance Rating: (DIR) 38 FC per W/Sq. Ft. 32 FC per W/Sq. Ft.					
	25°	0° - 60° 629 87%	10.0'	4 fc	15.1'	1 fc	Recessed mounting Square rooms used for multiple units: RCR 3: Length & Width = Ceiling Ht. - 2.5' x 3.33 RCR 5: Length & Width = Ceiling Ht. - 2.5' x 2.00 * Average Initial Footcandles at 2.5' Above Floor					
	35°	0° - 80° 689 95%	12.0'	3 fc	18.2'	1 fc						
	45°	0° - 90° 708 98%	14.0'	2 fc	21.2'	1 fc						
	55°	Total 722 100%	16.0'	2 fc	24.2'	0 fc						
	90°											

Delivered Lumens: 722
Luminaire Watts: 15.9
LER: 45.41

CP at 0° (Nadir): 442

Beam Angle: 74°
Spacing Ratio: 1.09

Lumen Multiplier: only 10L available
CCT Multiplier: only 30K available

CR: 80

See Page 1 for System Watts for all outputs



PHOTOMETRIC DATA - 4" SQUARE DEEP DOWNLIGHT

SS4Mx TA5L xx xx SDD4x TA5LAMB xx xx GL

CANDLEPOWER CURVE TEST SP-01345_1	INTENSITY CANDELA 0° AZIMUTH	ZONAL LUMENS		SINGLE UNIT: PERFORMANCE HORIZONTAL FOOTCANDLES INITIAL DOWNLIGHT ONLY				MULTIPLE UNITS: PERFORMANCE 80/50/20% REFLECTANCES HORIZONTAL FOOTCANDLES AND WATTS/SQ FT							
		0° - 10°	25	6%	Mounting Distance	FC at Beam Center	Diameter at Beam Angle	FC at Beam Edge	Ceiling Height	Fixture Spacing	RCR 3		RCR 5		
	0°	247	0° - 10°	91	21%	5.5'	8 fc	8.8'	2 fc	9'	6'	7	0.30	7	0.37
	5°	247	0° - 20°	183	43%	6.5'	6 fc	10.4'	1 fc	12'	8'	6	0.25	3	0.18
	15°	239	0° - 30°	270	64%	7.5'	4 fc	12.0'	1 fc	16'	12'	3	0.13	2	0.09
	25°	212	0° - 40°	358	85%	8.5'	3 fc	13.6'	1 fc	Delivered Illuminance Rating: (DIR) 22 FC per W/Sq. Ft. 19 FC per W/Sq. Ft.					
	35°	153	0° - 60°	395	93%	10.0'	2 fc	16.0'	1 fc	Recessed mounting Square rooms used for multiple units: RCR 3: Length & Width = Ceiling Ht. - 2.5' x 3.33 RCR 5: Length & Width = Ceiling Ht. - 2.5' x 2.00 * Average Initial Footcandles at 2.5' Above Floor					
	45°	82	0° - 80°	410	97%	12.0'	2 fc	19.2'	0 fc						
	55°	42	0° - 90°	424	100%	14.0'	1 fc	22.4'	0 fc						
	90°	12	Total	424	100%	16.0'	1 fc	25.6'	0 fc						

Delivered Lumens: **424**
Luminaire Watts: **15.8**
LER: **26.84**

CP at 0° (Nadir): **247**

Beam Angle: **77°**
Spacing Ratio: **1.13**

Lumen Multiplier: **N/A**
CCT Multiplier: **N/A**

CR: **N/A, Amber Light**

SS4Mx TD10L xx xx SDD4x TD10L30K xx xx GL

CANDLEPOWER CURVE TEST SP-01346_1	INTENSITY CANDELA 0° AZIMUTH	ZONAL LUMENS		SINGLE UNIT: PERFORMANCE HORIZONTAL FOOTCANDLES INITIAL DOWNLIGHT ONLY				MULTIPLE UNITS: PERFORMANCE 80/50/20% REFLECTANCES HORIZONTAL FOOTCANDLES AND WATTS/SQ FT							
		0° - 10°	44	6%	Mounting Distance	FC at Beam Center	Diameter at Beam Angle	FC at Beam Edge	Ceiling Height	Fixture Spacing	RCR 3		RCR 5		
	0°	433	0° - 10°	161	23%	5.5'	14 fc	8.5'	4 fc	9'	6'	20	0.54	12	0.38
	5°	437	0° - 20°	323	46%	6.5'	10 fc	10.1'	3 fc	12'	8'	9	0.25	6	0.18
	15°	422	0° - 30°	471	68%	7.5'	8 fc	11.6'	2 fc	16'	12'	5	0.13	3	0.09
	25°	376	0° - 40°	617	89%	8.5'	6 fc	13.1'	1 fc	Delivered Illuminance Rating: (DIR) 37 FC per W/Sq. Ft. 31 FC per W/Sq. Ft.					
	35°	255	0° - 60°	666	96%	10.0'	4 fc	15.5'	1 fc	Recessed mounting Square rooms used for multiple units: RCR 3: Length & Width = Ceiling Ht. - 2.5' x 3.33 RCR 5: Length & Width = Ceiling Ht. - 2.5' x 2.00 * Average Initial Footcandles at 2.5' Above Floor					
	45°	135	0° - 80°	682	98%	12.0'	3 fc	18.6'	1 fc						
	55°	66	0° - 90°	696	100%	14.0'	2 fc	21.7'	1 fc						
	90°	14	Total	696	100%	16.0'	2 fc	24.7'	0 fc						

Delivered Lumens: **696**
Luminaire Watts: **15.9**
LER: **43.77**

CP at 0° (Nadir): **433**

Beam Angle: **75°**
Spacing Ratio: **1.12**

Lumen Multiplier: **only 10L available**
CCT Multiplier: **only 30K available**

CR: **80**

See Page 1 for System Watts for all outputs

