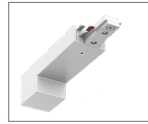


**BET TRACK**

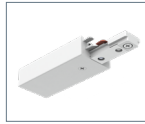
Track / Power Distribution System suitable for retail, commercial and residential use. Compatible with a wide selection of BET single circuit track lighting fixtures. Ships with one BET41 end cap.

- |  |  |
|--|--|
| <b>BET02BK</b><br>2' Track Matte Black | <b>BET02WH</b><br>2' Track Matte White |
| <b>BET04BK</b><br>4' Track Matte Black | <b>BET04WH</b><br>4' Track Matte White |
| <b>BET06BK</b><br>6' Track Matte Black | <b>BET06WH</b><br>6' Track Matte White |
| <b>BET08BK</b><br>8' Track Matte Black | <b>BET08WH</b><br>8' Track Matte White |



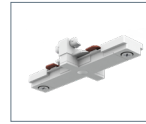
**CONDUIT END FEED**  
Surface conduit wiring. Accepts 3/8" or 1/2" (trade size) electrical fittings.

- BET13WH**  
Conduit End Feed White
- BET13BK**  
Conduit End Feed Black



**TOP ACCESS END FEED**  
Direct wiring through the ceiling with end feed in suspension.

- BET11WH**  
Top Access End Feed White
- BET11BK**  
Top Access End Feed Black



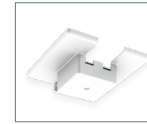
**MINI "I" CONNECTOR**  
Connects two track sections. Low profile design for a clean continuous run.

- BET21WH**  
Mini "I" Connector White
- BET21BK**  
Mini "I" Connector Black



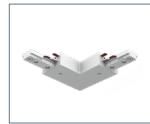
**END CAP**  
Covers end of track section. One included with each BET track.

- BET41WH**  
End Cap White
- BET41BK**  
End Cap Black



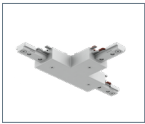
**FLOATING CANOPY**  
Wiring through a junction box. Can be located anywhere along the track. Comes with one BT41 end cap.

- BET90WH**  
Floating Canopy White
- BET90BK**  
Floating Canopy Black



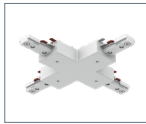
**"L" CONNECTOR**  
Connects two track sections in a L configuration Left or right. Can be internally adjusted 180°.

- BET34WH**  
"L" Connector White
- BET34BK**  
"L" Connector Black



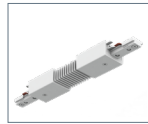
**"T" CONNECTOR**  
Connects three track sections in a T configuration. Adjustable for right or left applications.

- BET40WH**  
"T" Connector White
- BET40BK**  
"T" Connector Black



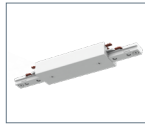
**"X" CONNECTOR**  
Connects four track sections in an X configuration. Factory wired for two separate 90° runs. Can be field wired for one run.

- BET38WH**  
"X" Connector White
- BET38BK**  
"X" Connector Black



**FLEXIBLE CONNECTOR**  
Connects two track sections up to 90° left, right, up or down.

- BET92WH**  
Flexible Connector White
- BET92BK**  
Flexible Connector Black



**LONG CONNECTOR**  
Connects two track sections. Can be used as a feed point.

- BET14WH**  
Long Connector White
- BET14BK**  
Long Connector Black



**LINE VOLTAGE MONO-POINT**

- BET70WH**  
Mono Point Canopy White
- BET70BK**  
Mono Point Canopy Black



**CURRENT LIMITING SINGLE CIRCUIT END FEED**  
End feed with Current Limiting device. Other amperage upon request.

- BET11CLWH-2A**  
End Feed White 2 Amps
- BET11CLBK-2A**  
End Feed Black 2 Amps
- BET11CLWH-4A**  
End Feed White 4 Amps
- BET11CLBK-4A**  
End Feed Black 4 Amps
- BET11CLWH-6A**  
End Feed White 6 Amps
- BET11CLBK-6A**  
End Feed Black 6 Amps



**PLUG ADAPTOR**  
Grounded Outlet. Integral on/off switch, track polarity indicator. Max. 5 Amp capacity. Not UL Listed.

- BET33WH** Plug Adaptor White
- BET33BK** Plug Adaptor Black



**BET EXTENSION ROD**  
Line Voltage Fixture Extension. 24", 36", & 48" lengths are not UL listed.

- BET52WH-12** - 12", White
- BET52BK-12** - 12", Black
- BET52WH-18** - 18", White
- BET52BK-18** - 18", Black
- BET52WH-24** - 24", White
- BET52BK-24** - 24", Black
- BET52WH-36** - 36", White
- BET52BK-36** - 36", Black
- BET52WH-48** - 48", White
- BET52BK-48** - 48", Black



**T-BAR HANGER CLIPS**  
Fits into channel in back of track; may be spaced to 4ft. Slide-on Type T-bar mounting clip. (Required when ordering stem assemblies - TPM).

- BET12S**  
T-Bar Hanger



**T-BAR HANGER CLIPS**  
Fits into channel in back of track; may be spaced to 4ft. **Deep tile** [3/16"] T-bar mounting clip.

- BET12D**  
Deep T-Bar Hanger



**COVER PLATE**  
Square Cover Plate with the threaded center access hole. Includes ground washer, threaded nipple, and nut. For use with Spectrum part numbers: BET11WH, BET11BK Top End Feed and when used as feed points: BET34WH, BET34BK, BET40WH, BET40BK, BET38WH, BET38BK or BET14WH, BET14BK.

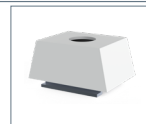
- BET61WH**  
Cover Plate White
- BET61BK**  
Cover Plate Black

ORDER AS PAIR



**STEM ASSEMBLIES**  
Thin 1/4" IPS Stems with Hardware to Connect to Track (BET10 required).

- TPM24WH** - 24" Stems White
- TPM24BK** - 24" Stems Black
- TPM36WH** - 36" Stems White
- TPM36BK** - 36" Stems Black
- \*Field Cuttable



**THREAD ROD MOUNTING KIT**  
For 1/4" IPS Thread (Required when ordering Stem Assemblies - TPM)

- BET10WH**  
Thread Rod White
- BET10BK**  
Thread Rod Black

ORDER AS PAIR



**CB CABLE ONLY**  
CB (AC CABLE 1/6) - MGR-SE-1/4-20-M, Mini Side Exit Gripper Nickel Plated (BETC Required).

- TCB24WH** - 24", White
- TCB36WH** - 36", White
- TCB72WH** - 72", White
- TCBC(XX)WH** - Custom Length, White (Specify in Inches)
- TCB24BK** - 24", Black
- TCB36BK** - 36", Black
- TCB72BK** - 72", Black
- TCBC(XX)BK** - Custom Length, Black (Specify in Inches)



**BET TRACK CLIP BASE**  
(Required when ordering CB Cable Only - TCB).

- BETC**





# BET - SINGLE CIRCUIT TRACK

SURFACE / SUSPENDED TRACK SYSTEM CONFIGURATION

