



PROJECT: _____
 QUANTITY: _____ TYPE: _____

6" MODULAR ACCENT LIGHT

FLUSH FLAT FLANGE / REGRESSED BEVELED FLANGE / REGRESSED RAZOR EDGE FLANGELESS

LED SERIES / MULTI-MODULE / 4 × 3000 LUMENS / 3" DIAMETER MODULES

RC6-FT3PC / RT3PC / NF3PC

APPLICATION

RC series modular fixture for retail, residential and commercial accent lighting.

FEATURES

Flush Flat Flanged for all ceiling types. Regressed Beveled Flanged for clean finished appearance. Regressed Razor Edge Flangeless for plaster ceilings install. Fixture available with 1-4 modules. Fixture modules rotate 359°, lock and tilt to 30° with 1" pull-down for optimal aiming. Easy driver and j-box access. Multi-bar adjustable mounting brackets. Posi-lock trim attachment. Front loading lamp bezel accepts up to two lens/louver options.

TRIM FINISH

A variety of architectural powdercoat finishes for interior of fixture and trim are available.

ELECTRONICS

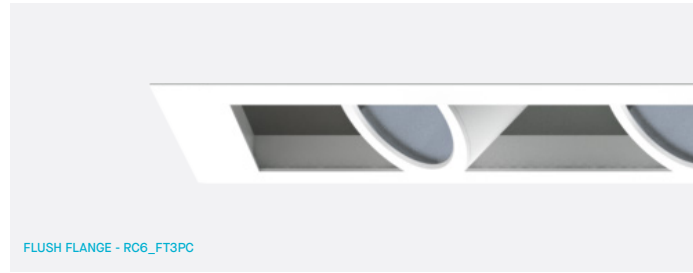
LED system features state of the art, high efficiency LEDs providing consistent stable color with excellent CCT control over the life of the light engine. Base 80 min CRI with 3-step MacAdam ellipse binning. High CRI of 90 min is also available as a standard option. A variety of electronic 120/277V and dimming options are available.

CONSTRUCTION

Housing constructed of #20 ga. galvanized steel and powdercoated to resist corrosion. Trim fabricated from aluminum extrusion and finished to specification.

CODE COMPLIANCE

BAA Compliant. Non-IC rated. ETL certified to meet US and Canadian standards. Suitable for dry or damp locations. Manufactured and tested to UL standards No. 1598/8750.



SERIES	LUMENS ¹	CCT	BEAM ²	DRIVER / VOLTAGE ³	OPTIONS ⁴	INTERIOR	TRIM ⁶	FINISHES	BAR HANGERS
FLANGED	10L 600 Lm 20L 1250 Lm 30L 2000 Lm	80 CRI 27K 2700K 30K 3000K 35K 3500K 40K 4000K	ND 19° MD 36° WD 43° XW 62°	D1 1% 0-10V, 120V D2 1% 0-10V, 277V	LENS NL No Lens SO34 Solite Diffusion GL34 Clear FG34 Frosted SK34 Linear HL34 Hex Louver SN34 ⁵ Snoot	MWI Matte White Interior MBI Matte Black Interior PTI Platinum Silver Interior BZI Bronze Interior CCI Custom Color Interior	FLANGED FT066 FT0612 FT0618 FT0624	MWMF Matte White MBMF Matte Black PTMF Platinum Silver BZMF Bronze CC Custom Color	BH27 27" Flat Bar CB24 24" C-Channel CB48 48" C-Channel
BEVELED FLANGE		90 CRI 27HK 2700K 30HK 3000K 35HK 3500K 40HK 4000K			OPTIONS EM Emergency Battery	Reference Color Sheet Located on Product Webpage For Full List of Available Colors.	BEVELED FLANGE RT266 RT2612 RT2618 RT2624		
FLANGELESS	1. Nominal Delivered Lumens at 35K		2. Beam angles represent one module	3. Contact Factory for Additional Options	4. See Product Page for Details - Only 2 options can be combined 5. Flat Black Finish		FLANGELESS NF166 NF1612 NF1618 NF1624	FLANGELESS MW Matte White MB Matte Black PT Platinum Silver BZ Bronze CC Custom Color	
							6. Inside Trim and Flange Will Match Color Specified	Reference Color Sheet Located on Product Webpage For Full List of Available Colors.	

EXAMPLE: RC624FT3PC10L27KMDD1SO34MWIFT0624MWBH27

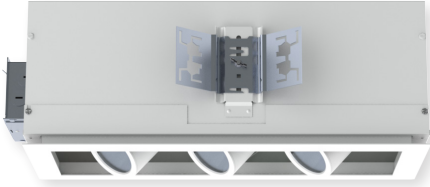


6" MODULAR ACCENT LIGHT

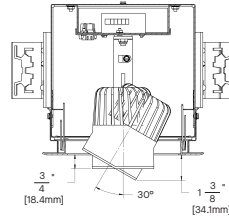


FIXTURE DIMENSIONS

RC6_FT3PC - FLUSH FLAT FLANGE



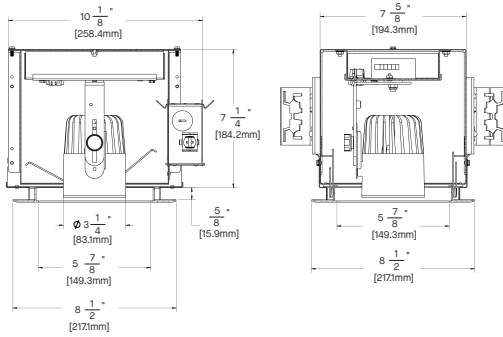
SIDE VIEW WITH PULL DOWN



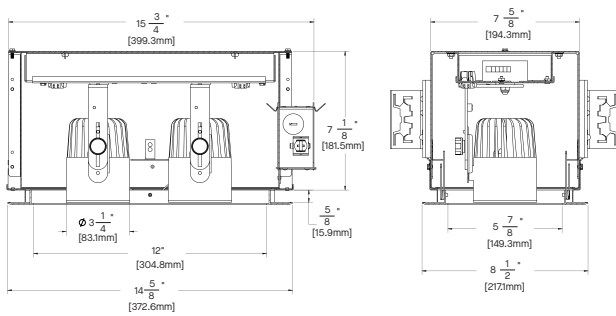
LUMENS / WATTAGE DATA				
PART NUMBER	SOURCE LUMENS ¹	DELIVERED LUMENS ²	SYSTEM WATTS	LPW
RC66_3PC10L	1000	598	8.3	72
RC66_3PC20L	2000	1251	17.1	73
RC66_3PC30L	3000	1955	22	89

¹ Nominal Source Lumens at 35K ² Nominal Delivered Lumens at 82 CRI with PC40L 35K MD XX NL

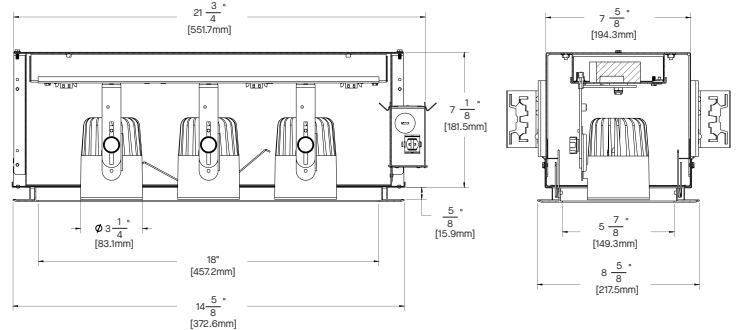
RC66FT3PC (1 MODULE)



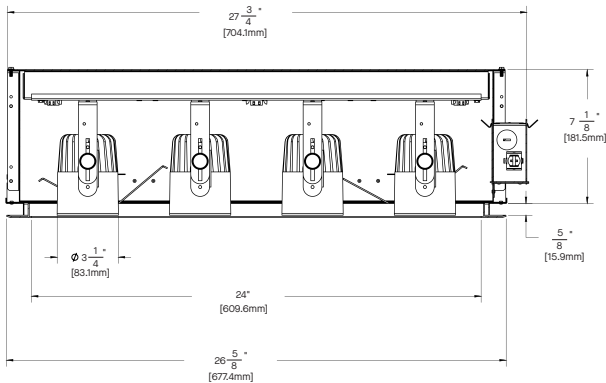
RC612FT3PC (2 MODULE)



RC618FT3PC (3 MODULE)



RC624FT3PC (4 MODULE)

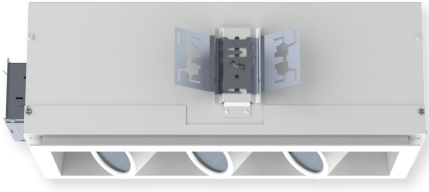


6" MODULAR ACCENT LIGHT

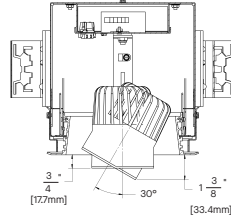


FIXTURE DIMENSIONS

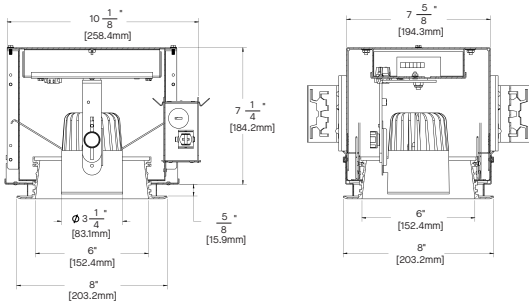
RC6_RT3PC - REGRESSED BEVEL FLANGE



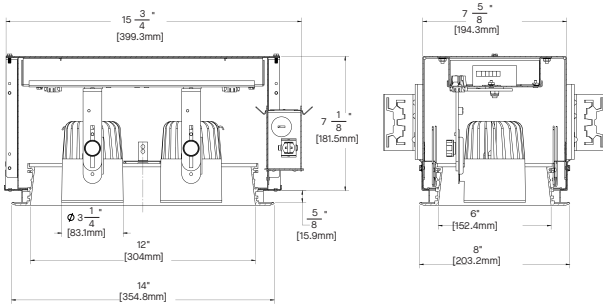
SIDE VIEW WITH PULL DOWN



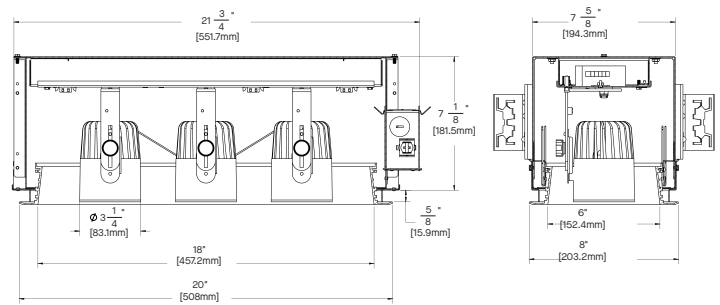
RC66RT3PC (1 MODULE)



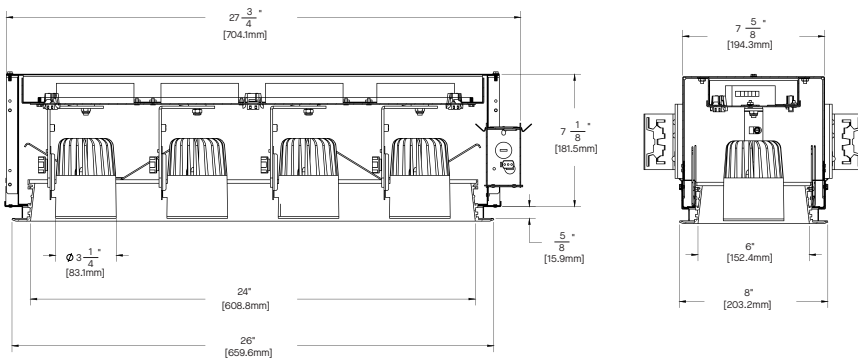
RC612RT3PC (2 MODULE)



RC618RT3PC (3 MODULE)



RC624RT3PC (4 MODULE)

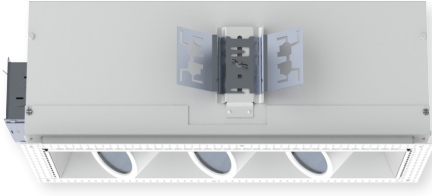


6" MODULAR ACCENT LIGHT

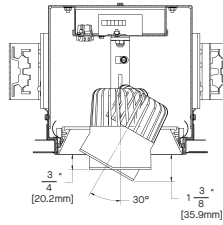


FIXTURE DIMENSIONS

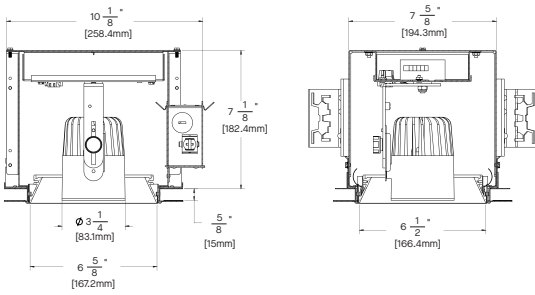
RC6_NF3PC - REGRESSED RAZOR EDGE FLANGELESS



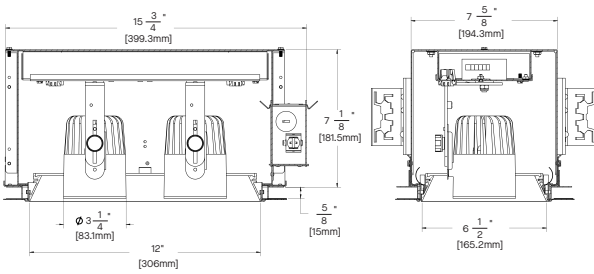
SIDE VIEW WITH PULL DOWN



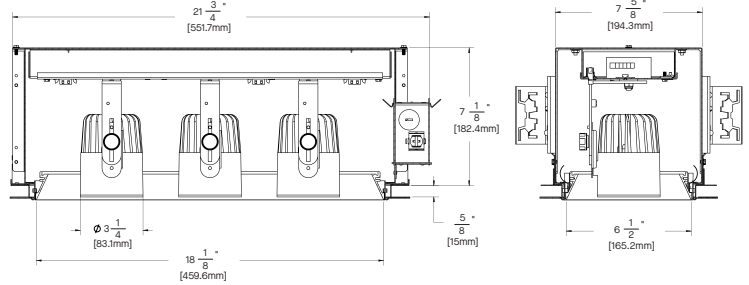
RC6NF3PC (1 MODULE)



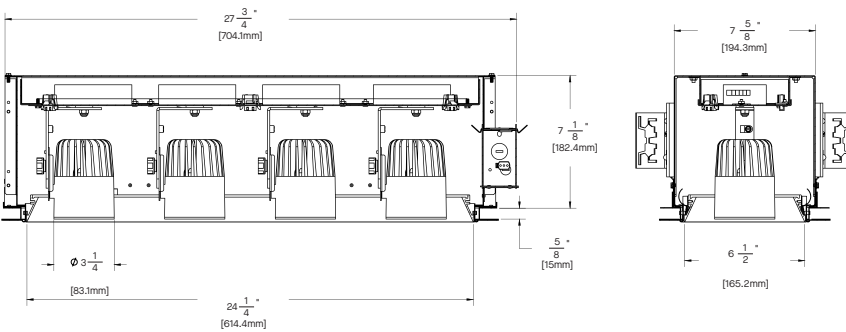
RC612NF3PC (2 MODULE)



RC618NF3PC (3 MODULE)



RC624NF3PC (4 MODULE)



6" MODULAR ACCENT LIGHT



Photometric data shown represents a single module. For multi-module fixtures, use one IES file per module to ensure accurate lighting calculations.

RC6-xx3PC 30L 35K ND xx xx NL

CANDLEPOWER CURVE TEST SP-00596_21	INTENSITY CANDELA 0° AZIMUTH	ZONAL LUMENS	SINGLE UNIT: PERFORMANCE HORIZONTAL FOOTCANDLES INITIAL DOWNLIGHT ONLY				MULTIPLE UNITS: PERFORMANCE 80/50/20% REFLECTANCES HORIZONTAL FOOTCANDLES AND WATTS/SQ FT						
			Mounting Distance	FC at Beam Center	Diameter at Beam Angle	FC at Beam Edge	Ceiling Height	Fixture Spacing	RCR 1		RCR 3		
	0°	0° - 10° 631 28%	8'	143 fc	3.0'	68 fc	18'	4'	152	1.87	138	1.87	
	0° 9128	0° - 20° 1397 62%	10'	91 fc	3.7'	43 fc	22'	5'	99	1.21	85	1.15	
	5° 7730	0° - 30° 1927 85%	12'	63 fc	4.5'	30 fc	26'	6'	67	0.82	57	0.78	
	15° 2645	0° - 40° 2225 98%	14'	47 fc	5.2'	22 fc	Delivered Illuminance Rating: (DIR)						
	25° 1088	0° - 60° 2252 100%	16'	36 fc	6.0'	17 fc	1' Suspension Length to luminous aperture Square rooms used for multiple units: RCR 1: Length & Width = Ceiling Ht. - 3.5' x 10.00 RCR 3: Length & Width = Ceiling Ht. - 3.5' x 3.33 + Average Initial Footcandles at 2.5' Above Floor						
	35° 480	0° - 80° 2259 100%	20'	23 fc	7.5'	11 fc	Lumen Multiplier: 20L x 0.47, 30L x 0.73 CCT Multiplier: 27K x 0.96, 30K x 0.99, 40K x 1.04						
	45° 15	0° - 90° 2261 100%	24'	16 fc	9.0'	8 fc							
	55° 4	90° 0	Total 2261 100%	28'	12 fc	10.4'	6 fc						
	90° 0												

Delivered Lumens: 2261
Luminaire Watts: 30.3
LER: 74.62

CP at 0° (Nadir): 9128
CRI: 80+

Beam Angle: 21°
Spacing Ratio: 0.35

RC6-xx3PC 30L 35K MD xx xx NL

CANDLEPOWER CURVE TEST SP-00596_15	INTENSITY CANDELA 0° AZIMUTH	ZONAL LUMENS	SINGLE UNIT: PERFORMANCE HORIZONTAL FOOTCANDLES INITIAL DOWNLIGHT ONLY				MULTIPLE UNITS: PERFORMANCE 80/50/20% REFLECTANCES HORIZONTAL FOOTCANDLES AND WATTS/SQ FT						
			Mounting Distance	FC at Beam Center	Diameter at Beam Angle	FC at Beam Edge	Ceiling Height	Fixture Spacing	RCR 1		RCR 3		
	0°	0° - 10° 523 27%	8'	100 fc	3.9'	46 fc	18'	6'	58	0.60	53	0.60	
	0° 6369	0° - 20° 1289 66%	10'	64 fc	4.9'	29 fc	22'	7'	42	0.43	41	0.47	
	5° 5918	0° - 30° 1731 89%	12'	44 fc	5.9'	20 fc	26'	8'	33	0.34	28	0.32	
	15° 2731	0° - 40° 1845 94%	14'	32 fc	6.9'	15 fc	Delivered Illuminance Rating: (DIR)						
	25° 988	0° - 60° 1895 97%	16'	25 fc	7.9'	11 fc	1' Suspension Length to luminous aperture Square rooms used for multiple units: RCR 1: Length & Width = Ceiling Ht. - 3.5' x 10.00 RCR 3: Length & Width = Ceiling Ht. - 3.5' x 3.33 + Average Initial Footcandles at 2.5' Above Floor						
	35° 180	0° - 80° 1949 100%	20'	16 fc	9.9'	7 fc	Lumen Multiplier: 20L x 0.47, 30L x 0.73 CCT Multiplier: 27K x 0.96, 30K x 0.99, 40K x 1.04						
	45° 37	0° - 90° 1955 100%	24'	11 fc	11.8'	5 fc							
	55° 27	90° 1	Total 1955 100%	28'	8 fc	13.8'	4 fc						
	90° 1												

Delivered Lumens: 1955
Luminaire Watts: 22
LER: 88.86

CP at 0° (Nadir): 6369
CRI: 80+

Beam Angle: 28°
Spacing Ratio: 0.46

HOW TO USE PERFORMANCE DATA

SINGLE UNIT	MULTIPLE UNITS
<p>Cone of Light of a single, symmetrical beam luminaire. Direct initial illumination (FC) and Beam Angle diameter directly beneath fixture; shown at different distances from aperture to horizontal plane. Calculated using Inverse Square Law.</p> $FC_H = CP \times (\cos \theta) \div D^2$ <p>Beam Diam. = 1/2 Beam Angle (Tan) x 2D</p> <ul style="list-style-type: none"> CP Candela at 0° (Nadir) Cos θ Cosine of θ Angle D Distance (Mounting Height AFF) FC_H Footcandles, Horizontal Beam Angle Cone of light to 50% max. CP Beam Diam. Pattern of light at Beam Angle 	<p>Square grid layout of multiple luminaires in unfurnished, square rooms of different proportions (Room Cavity Ratios) with 80/50/20% room surface reflectances. 2' Suspension Length to aperture. Initial average illumination (FC) calculated at 2.5' above floor, using Zonal Cavity Method. W/Sq. Ft. of layout shown for each ceiling height and RCR.</p> <p>Delivered Illuminance Rating (DIR*): System performance indicator expressed as ratio of approximate initial FC per W/Sq. Ft. delivered to horizontal plane below, for the range of ceiling heights indicated.</p> <ul style="list-style-type: none"> To estimate FC for Fixture Spacing that is different than shown (do not exceed Spacing Ratio): $FC = \text{Chart Spacing}^2 \div \text{Different Spacing}^2 \times \text{Chart FC}$ To estimate Sq. Ft. per fixture for a specific target FC: $\text{Sq. Ft.} / \text{Fixture} = \text{Chart FC} \times \text{Chart Spacing}^2 \div \text{Target FC}$ To estimate Fixture Quantity in a room: Fixture Qty. = Sq. Ft. of Rm. ÷ Sq. Ft. per fixture To estimate Watts/Sq. Ft.: W/ Sq. Ft. = Luminaire Watts x Qty. ÷ Sq. Ft. of Rm.

6" MODULAR ACCENT LIGHT



RC6-xx3PC 30L 35K WD xx xx NL

CANDLEPOWER CURVE TEST SP-00596_16	INTENSITY CANDELA 0° AZIMUTH	ZONAL LUMENS	SINGLE UNIT: PERFORMANCE HORIZONTAL FOOTCANDLES INITIAL DOWNLIGHT ONLY				MULTIPLE UNITS: PERFORMANCE 80/50/20% REFLECTANCES HORIZONTAL FOOTCANDLES AND WATTS/SQ FT					
			Mounting Distance	FC at Beam Center	Diameter at Beam Angle	FC at Beam Edge	Ceiling Height	Fixture Spacing	RCR 1		RCR 3	
	0°	0° - 10° 410 20%	8'	73 fc	5.4'	31 fc	14'	6'	57	0.58	57	0.65
	0° 4668	0° - 20° 1215 60%	10'	47 fc	6.7'	20 fc	18'	8'	34	0.34	30	0.34
	5° 4489	0° - 30° 1771 88%	12'	32 fc	8.1'	14 fc	22'	10'	21	0.21	18	0.21
	15° 3014	0° - 40° 1897 94%	14'	24 fc	9.4'	10 fc	Delivered Illuminance Rating: (DIR) 99 FC per W/Sq. Ft. 89 FC per W/Sq. Ft.					
	25° 1251	0° - 60° 1953 97%	16'	18 fc	10.8'	8 fc	1' Suspension Length to luminous aperture Square rooms used for multiple units: RCR 1: Length & Width = Ceiling Ht. - 3.5' x 10.00 RCR 3: Length & Width = Ceiling Ht. - 3.5' x 3.33 * Average Initial Footcandles at 2.5' Above Floor					
	35° 200	0° - 80° 2002 100%	20'	12 fc	13.5'	5 fc						
	45° 39	0° - 90° 2008 100%	24'	8 fc	16.2'	3 fc						
	55° 30	90° 1	28'	6 fc	18.9'	3 fc						
	90° 1	Total 2008 100%										
	Delivered Lumens: 2008 Luminaire Watts: 22 LER: 91.27	CP at 0° (Nadir): 4668 CRI: 80+	Beam Angle: 37° Spacing Ratio: 0.60	Lumen Multiplier: 20L x 0.47, 30L x 0.73 CCT Multiplier: 27K x 0.96, 30K x 0.99, 40K x 1.04								

RC6-xxPC 30L 35K XW xx xx NL

CANDLEPOWER CURVE TEST SP-00596_23	INTENSITY CANDELA 0° AZIMUTH	ZONAL LUMENS	SINGLE UNIT: PERFORMANCE HORIZONTAL FOOTCANDLES INITIAL DOWNLIGHT ONLY				MULTIPLE UNITS: PERFORMANCE 80/50/20% REFLECTANCES HORIZONTAL FOOTCANDLES AND WATTS/SQ FT					
			Mounting Distance	FC at Beam Center	Diameter at Beam Angle	FC at Beam Edge	Ceiling Height	Fixture Spacing	RCR 1		RCR 3	
	0°	0° - 10° 199 10%	8'	33 fc	9.8'	10 fc	14'	8'	34	0.46	25	0.40
	0° 2135	0° - 20° 710 35%	10'	21 fc	12.2'	7 fc	18'	10'	20	0.28	20	0.32
	5° 2075	0° - 30° 1379 68%	12'	15 fc	14.6'	5 fc	22'	12'	14	0.20	13	0.20
	15° 1789	0° - 40° 1836 90%	14'	11 fc	17.1'	3 fc	Delivered Illuminance Rating: (DIR) 72 FC per W/Sq. Ft. 63 FC per W/Sq. Ft.					
	25° 1456	0° - 60° 2016 99%	16'	8 fc	19.5'	3 fc	1' Suspension Length to luminous aperture Square rooms used for multiple units: RCR 1: Length & Width = Ceiling Ht. - 3.5' x 10.00 RCR 3: Length & Width = Ceiling Ht. - 3.5' x 3.33 * Average Initial Footcandles at 2.5' Above Floor					
	35° 737	0° - 80° 2034 100%	20'	5 fc	24.4'	2 fc						
	45° 161	0° - 90° 2036 100%	24'	4 fc	29.3'	1 fc						
	55° 59	90° 0	28'	3 fc	34.2'	1 fc						
	90° 0	Total 2036 100%										
	Delivered Lumens: 2036 Luminaire Watts: 30.3 LER: 67.19	CP at 0° (Nadir): 2135 CRI: 80+	Beam Angle: 63° Spacing Ratio: 0.94	Lumen Multiplier: 20L x 0.47, 30L x 0.73 CCT Multiplier: 27K x 0.96, 30K x 0.99, 40K x 1.04								

HOW TO USE PERFORMANCE DATA

SINGLE UNIT	MULTIPLE UNITS
<p>Cone of Light of a single, symmetrical beam luminaire. Direct initial illumination (FC) and Beam Angle diameter directly beneath fixture; shown at different distances from aperture to horizontal plane. Calculated using Inverse Square Law.</p> $FC_H = CP \times (\cos \theta) \div D^2$ <p>Beam Diam. = ½ Beam Angle (Tan) x 2D</p> <ul style="list-style-type: none"> • CP Candela at 0° (Nadir) • Cos θ Cosine of θ Angle • D Distance (Mounting Height AFF) • FC_H Footcandles, Horizontal • Beam Angle Cone of light to 50% max. CP • Beam Diam. Pattern of light at Beam Angle 	<p>Square grid layout of multiple luminaires in unfurnished, square rooms of different proportions (Room Cavity Ratios) with 80/50/20% room surface reflectances. 2' Suspension Length to aperture. Initial average illumination (FC) calculated at 2.5' above floor, using Zonal Cavity Method. W/Sq. Ft. of layout shown for each ceiling height and RCR.</p> <p>Delivered Illuminance Rating (DIR*): System performance indicator expressed as ratio of approximate initial FC per W/Sq. Ft. delivered to horizontal plane below, for the range of ceiling heights indicated.</p> <ul style="list-style-type: none"> • To estimate FC for Fixture Spacing that is different than shown (do not exceed Spacing Ratio): $FC = \text{Chart Spacing}^2 \div \text{Different Spacing}^2 \times \text{Chart FC}$ • To estimate Sq. Ft. per fixture for a specific target FC: $\text{Sq. Ft.} / \text{Fixture} = \text{Chart FC} \times \text{Chart Spacing}^2 \div \text{Target FC}$ <ul style="list-style-type: none"> • To estimate Fixture Quantity in a room: Fixture Qty. = Sq. Ft. of Rm. ÷ Sq. Ft. per fixture • To estimate Watts/Sq. Ft.: W/ Sq. Ft. = Luminaire Watts x Qty. ÷ Sq. Ft. of Rm.