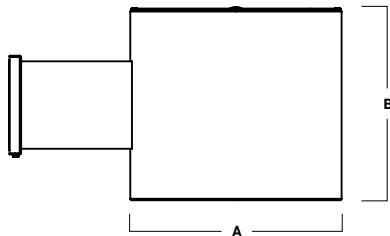


12" ROUND DIRECT GENERAL ILLUMINATION



A	B
11.4 289.6 mm	10.3 261.6 mm

C1210GV - WALL MOUNT

APPLICATION

12" round x 10" high cylinder series for general illumination with optional integral emergency battery.

FEATURES

Spectrum's Cylinder series provides traditional architectural style with high performance and energy efficient illumination. Rugged design with flexible mounting, finish and LED options make these extremely versatile fixtures. Single stage optical system design delivers smooth general illumination.

FINISH

Multi-stage polyester powder-coat process applied on our dedicated paint lines. See mounting and color pages for standard finishes. All exposed materials are chromate pretreated to resist corrosion.

ELECTRONICS

GV LED system features high brightness white Samsung LED's. 3-step MacAdam Ellipse binning. Standard CRI: 85+. Higher CRI, R9 and custom LED configurations are available; consult factory. Variety of electronic 120V/277V and dimming drivers. DMX controls available.

CONSTRUCTION

Spun seamless aluminum fixture housing. Specular primary optical reflectors provide high efficiency illumination. Stainless steel hardware with galvanized steel brackets to resist corrosion. One piece reflector trim spun from .063 thick high purity aluminum and finished to specification.

CODE COMPLIANCE

BAA compliant. ETL certified to meet US and Canadian standards. Suitable for dry or damp locations. Wet Location Option. Manufactured and tested to UL standards No. 1598/8750.

LUMENS / WATTAGE DATA				
PART NUMBER	SOURCE LUMENS ¹	DELIVERED LUMENS ²	SYSTEM WATTS	LPW
C1210GV15L	1500	805	10	81
C1210GV27L	2700	1406	18	78
C1210GV37L	3700	2063	26	79
C1210GV55L	5500	3038	39	78

SERIES	LUMENS ¹	CCT	DRIVER / DIMMING ³	OPTIONS ⁵	TRIM	MOUNTING ⁷	FINISH ⁹
C1210GV	15L 1500 Lm	27K 2700K	EX Electronic Driver, 120V/277V	FS Fuse Holder and Fuse WL Wet Location	TSG ⁶ Semi Diffuse Low Iridescent Clear TCY Same Color as Cylinder TCC Custom Color	WM5 Wall Mount 5" Extension	MW ¹⁰ Matte White MB ¹⁰ Matte Black PT ¹⁰ Platinum Silver CC Custom Color
	27L 2700 Lm	30K 3000K	DS10X 10%, 0-10V, 120V/277V				
	37L 3700 Lm	35K 3500K	DO10X 1%, 0-10V, 120V/277V				
	55L 5500 Lm	40K 4000K	DS2W1 ELV / MLV,120V				
		50K 5000K	DLTE1* Lutron 2-Wire Forward Phase (MLV), 120V				
			DL3EX* 1% Lutron® EcoSystem® Fade, 120V/277V				
			EDO1X 0.1%, eldoLED 120V/277V				
			DALIX DALI Control				

EXAMPLE: C1210GV55L35KEX/TSG/WM5/MW

NOTES:

1 Nominal Source Lumens at 35K 2 Nominal Delivered Lumens at 35K with TSG-SO-MW 3 Contact Factory for Additional Options 4 37L Max 5 See Product Options Page For Details 6 Standard Finish 7 See Mounting Page for Details on Components and Finishes 8 EMIT Up to 37L 9 Reference Color Sheet Located on Product Webpage for Full List of Available Colors 10 Standard Finishes



PROJECT: _____
TYPE: _____



Dimensions and values shown are nominal. Spectrum Lighting continually works to improve products and reserves the right to make changes which may alter the performance or appearance of products.

12" ROUND DIRECT

GENERAL ILLUMINATION / FIXTURE OPTIONS



STANDARD FINISHES

MW
MATTE WHITE



MB
MATTE BLACK

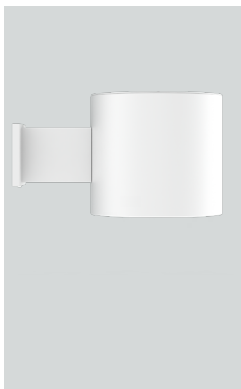


PT
PLATINUM SILVER

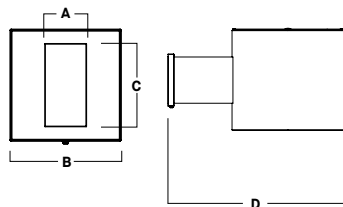


WALL MOUNT DETAIL

WM3
WALL MOUNT 3" EXTENSION



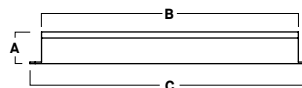
FRONT VIEW SIDE VIEW



A	B	C	D
2.4	6.4	4.7	18.0
61.0 mm	162.6 mm	119.4 mm	457.2 mm

EMERGENCY BATTERY OPTIONS

EMRM* - 7W REMOTE EMERGENCY BATTERY
(50' MAX)



A	B	C
1.3	12.6	13.0

*OTHER EM BATTERY SIZES AVAILABLE, CONSULT FACTORY

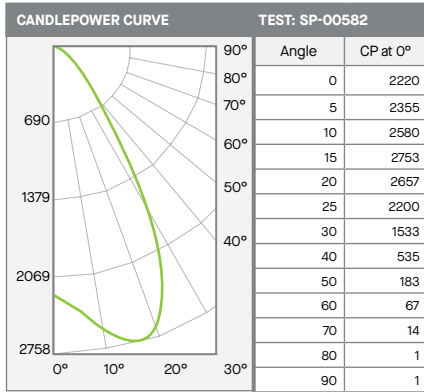
12" ROUND DIRECT

GENERAL ILLUMINATION / PHOTOMETRIC DATA



C1210GV-55L35K-EXxx-TSG-SO-xxMW

55L - 85 CRI



ZONAL LUMENS		
0-10	230	8%
0-20	987	32%
0-30	1986	65%
0-40	2622	86%
0-60	2993	99%
0-80	3036	100%
0-90	3038	100%
Total Lumens	3038	100%

SINGLE UNIT: PERFORMANCE			
INITIAL FOOTCANDLES AND BEAM ANGLE DIAMETERS			
Mounting Height*	FC at Center	Diameter of Beam**	FC at Beam**
5.5'	73	6.7'	27
6.5'	53	7.9'	19
7.5'	39	9.1'	14
8.5'	31	10.4'	11
10.0'	22	12.2'	8
12.0'	15	14.6'	6
14.0'	11	17.1'	4
16.0'	9	19.5'	3

* From aperture to horizontal surface below.
 ** At IESNA defined Beam Angle, to 50% Max. CP.

Delivered Lumens: 3038 CP @ 0° (Nadir): 2220 Spacing Ratio: 1.12
 Luminaire Watts: 39 Beam Angle: 62.7° Output Multipliers: 15L x 0.27, 27L x 0.46, 37L x 0.68
 LER: 78 CRI: 84