

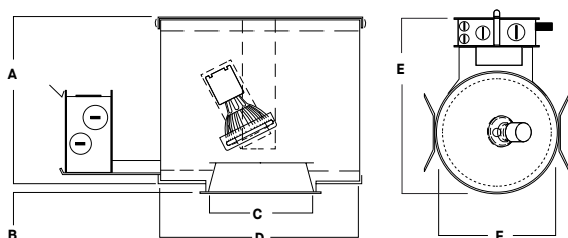
4" SQUARE ADJUSTABLE ACCENT

PROJECT:

QUANTITY:

TYPE:

recessed
fixtures



A	B	C	D	E	F
4.6 117.5 mm	0.6 15.8 mm	4.0 101.6 mm	8.0 203.2 mm	13.0 330.2 mm	8.0 203.2 mm

SGAG4SQ

APPLICATION

4" Square aperture LED MR16 adjustable accent.

FEATURES

Efficient reflector design optimized for MR16 LED lamps (sold by others). Trim rotates 360° for easy alignment, lamp tilts and locks to 45°. Integral 5/8" (0.625") plaster ring. Tool-less access for ease of maintenance. Multi-bar adjustable mounting brackets.

TRIM FINISH

Variety of powdercoat and anodized finishes available on trim.

ELECTRONICS

120V Electronic transformer is standard.

CONSTRUCTION

Frame constructed of 20 ga. aluminum. Trim formed from .050" high purity aluminum and finished to specification.

CODE COMPLIANCE

ETL listed for damp locations. Wet location available. Manufactured and tested to UL Standard No. 1598.

PRODUCT SELECTOR GUIDE

SERIES	DIMMING	OPTIONS	BAR HANGERS	TRIM	FINISH	FLANGE FINISH	LENS
SGAG4SQ			/	AR0204			

EXAMPLE

SGAG4SQ	E1		/	BH27	/	AR0204	SG	MF	SO
---------	----	--	---	------	---	--------	----	----	----

HOUSING

SERIES	DIMMING	OPTIONS
SGAG4SQ	E1 Electronic, 120V	CR Corrosion Resistant TR Top Relamping Option

MOUNTING OPTIONS

BAR HANGERS
BH27 27" Solid Bars H12 12" - 24" Expandable Bars CB24 24" C-Channel Bars

TRIM OPTIONS

TRIM	FINISH	FLANGE FINISH	LENS
AR0204	SG Semi-Diffuse MW Low Iridescent MB Matte White MB Matte Black	MF Matching Flange WF White Flange For Use with Non-White Trim Finish	GL Clear Glass Lens SO Micro Prism Solite™ Lens NL No Lens

