

6" ROUND FLANGELESS DOWNLIGHT

NON-IC CONSTRUCTION

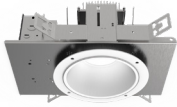
Spectrum's Infinium 6" recessed round flangeless downlight series features a shallow plenum housing for general illumination.

LUMENS AND WATTAGE CHART			
PART NUMBER	DELIVERED LUMENS ¹	SYSTEM WATTS	LPW
SGE6PZFX10L	746	6.6	113
SGE6PZFX15L	1160	10.5	110
SGE6PZFX20L	1574	14.4	109
SGE6PZFX30L	2361	21.9	108
SGE6PZFX40L	3188	30	106
SGE6PZFX50L	4056	38.3	106

¹ Nominal Delivered Lumens at 35K with MW SO

AVAILABLE HOUSING TYPE

SGE6PZFX - New Construction



PRODUCT SELECTOR GUIDE

SERIES	LUMENS	CRI / CCT	DRIVER / VOLTAGE	EMERGENCY	BAR HANGERS	TRIM TYPE	FINISH	LENS
SGE6PZFX						NF6223FX		
EXAMPLE								
SGE6PZFX	15L	35K	DX		BH27	NF6223FX	MW	SO

FIXTURE HOUSING SPECIFICATION

SERIES	LUMENS	CRI / CCT	DRIVER / VOLTAGE	EMERGENCY	BAR HANGERS	
SGE6PZFX	10L 750 Lm	90 Minimum	DX 1%, 0-10V, 120V/277V	EM Integral Emergency Battery	BH27 27" Solid Bars Standard Bar Hangers H12 12" - 24" Expandable Bars CB24 24" C-Channel Bars	
	15L 1150 Lm	27HK 2700K	DS2W1 1%, ELV/MLV, 120V	EMRM Remote Emergency Battery Pack Installer Responsible For EM Access		
	20L 1600 Lm	30HK 3000K				
	30L 2350 Lm	35HK 3500K				
	40L 3200 Lm	40HK 4000K				
	50L 4050 Lm	80 Minimum				
	Nominal Delivered Lumens at 35K with MW SO		30K 3000K			
			35K 3500K			
			40K 4000K			
			50K 5000K			

TRIM SPECIFICATION

TRIM TYPE	FINISH	LENS
NF6223FX	MW Matte White	SO Micro Prism Solite™ Lens
	MB Matte Black SG Semi-Diffuse PT Platinum Silver CC Custom Color Consult Factory See Color Guide for Full Range of Color Options	

PROJECT: _____
 QUANTITY: _____ TYPE: _____



MATTE WHITE



MATTE BLACK



SEMI-DIFFUSE



PLATINUM SILVER



BRONZE



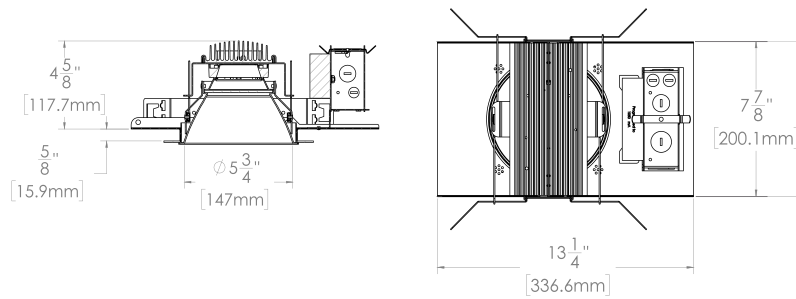
- Up to 4000 delivered lumens.
- Smooth light distribution for general illumination.
- Shallow plenum construction.
- Flangeless trim includes plaster mesh fitter.
- L70 at >60,000 Hours at 70% lumens maintenance.
- 5 year warranty on fixture and electronics.
- Sustainable fixture.
- Damp location listed.
- Ease of maintenance.
- Posi-lock trim retention torsion springs.



HOUSING DIMENSIONS

SGE6PZFX - NEW CONSTRUCTION

Non-IC rated, thermally protected frame-in kit for new construction.



TRIM DATA

NF6223FX - DOWNLIGHT



FEATURES

APPLICATIONS

FX series 6" diameter downlight with flangeless trim, designed for general downlighting with smooth light distribution.

FEATURES

Shallow plenum construction. Auto dim thermal protector for long term reliability. Zhaga international standard LED module for ease of maintenance and future replacement. Tool-less LED module, driver, and J-Box access. Multi-Bar mounting brackets, fit a variety of mounting bars. Posi-lock trim retention torsion springs. Integral 5/8" (.625) collar, works in ceiling up to 1" Deep. Intended for Non-IC new construction.

FINISH

Variety of powdercoat and anodized finishes available. Plaster mesh fitter included.

ELECTRONICS

LED system features high efficacy Philips LEDs. Standard CRI is >80. Drivers are overload and short circuit protected as well as thermally regulated. Sound rating A.

CONSTRUCTION

Housing/frame constructed of #20 ga. galvanized steel to resist corrosion. Flangeless one piece trim spun from 0.063" thick high purity aluminum and finished to specification. Passive machined aluminum heatsink.

CODE COMPLIANCE

BAA Compliant. Non-IC New Construction only. ETL certified to meet US and Canadian standards. Suitable for dry or damp locations. LM79/LM80 data available. Manufactured and tested to UL standards No. 1598.

RATED LIFE

Rated for 60,000 Hours at 70% lumen maintenance. (L70)



PHOTOMETRIC DATA - 6" ROUND FLANGELESS DOWNLIGHT

SGE6PZLEDFX 50L 35K XX NF6223FX MW SO

CANDLEPOWER CURVE TEST SP-01237	INTENSITY CANDELA 0° AZIMUTH	ZONAL LUMENS		SINGLE UNIT: PERFORMANCE DIRECT FOOTCANDLES BASED ON DOWNLIGHT ONLY				MULTIPLE UNITS: PERFORMANCE 80/50/20% REFLECTANCES INITIAL FOOTCANDLES AND WATTS PER SQUARE FOOT							
		0°	0° - 10°	297	7%	Mounting Height AFF	FC at Center on Floor	Beam Diameter	FC at Beam Edge	Ceiling Height	Fixture Spacing	RCR 2		RCR 4	
	0°	3080	0° - 10°	1123	28%	8'	48 fc	10.7'	14 fc	12'	8'	63	0.61	53	0.61
	5°	3077	0° - 20°	2247	55%	10'	31 fc	13.4'	9 fc	16'	10'	42	0.41	26	0.30
	15°	2934	0° - 30°	3151	78%	12'	21 fc	16.1'	6 fc	20'	12'	25	0.25	16	0.18
	25°	2445	0° - 40°	3840	95%	14'	16 fc	18.7'	4 fc	Delivered Illuminance Rating: (DIR)					
	35°	1402	0° - 60°	4037	100%	16'	12 fc	21.4'	3 fc						
	45°	535	0° - 80°	4056	100%	20'	8 fc	26.8'	2 fc	Recessed mounting Square rooms used for multiple units: RCR 2: Length & Width = Ceiling Ht. - 2.5' x 5.00 RCR 4: Length & Width = Ceiling Ht. - 2.5' x 2.50 * Average Footcandles at 2.5' Above Floor					
	55°	247	0° - 90°	4056	100%	24'	5 fc	32.1'	2 fc						
	90°	3	Total	4056	100%	28'	4 fc	37.5'	1 fc						

Delivered Lumens: 4056
Luminaire Watts: 38.4
LER: 105.63

CP at 0° (Nadir): 3080
CRI: 80+

Beam Angle: 69°
Spacing Ratio: 1.04

Lumen Multiplier: 10L x 0.18, 15L x 0.29, 20L x 0.39, 30L x 0.58, 40L x 0.78
CCT Multiplier: 27HK x 0.77, 30K x 0.96, 40K x 1.03, 50K x 1.04

