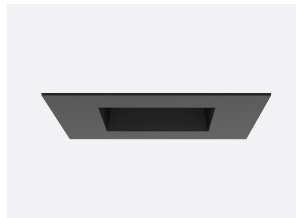
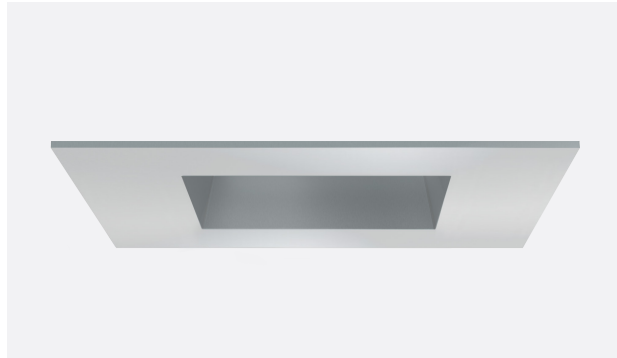


DUO 2" SQUARE

ACCESSIBLE CEILINGS

DOWNLIGHT / ADJUSTABLE ACCENT / WALL WASH

Spectrum's 2" aperture recessed LED downlight fixture is ideal for application where discrete lighting is desired. Suitable for accessible ceilings only. Multiple beam distributions provide flexibility to the lighting designer.



DOWNLIGHT LUMENS / WATTAGE DATA

PART NUMBER	DELIVERED LUMENS	SYSTEM WATTS	LPW
2DL835KM302SQDMW	658	6.45	658
2DL1035KM302SQDMW	1053	10.99	95.81
2DL1535KM302SQDMW	1376	14.8	92.97
2DL2035KM302SQDMW	2037	22.42	90.86

ADJUSTABLE LUMENS / WATTAGE DATA

PART NUMBER	DELIVERED LUMENS	SYSTEM WATTS	LPW
2AL835KM302SQAMW	565	6.45	87.6
2AL1035KM302SQAMW	860	10.99	78.25
2AL1535KM302SQAMW	1116	14.7	75.92
2AL2035KM302SQAMW	1652	22.54	73.29

WALL WASH LUMENS / WATTAGE DATA

PART NUMBER	DELIVERED LUMENS	SYSTEM WATTS	LPW
2DL835KM302SQLW6MW	404	6.45	62.64
2DL1035KM302SQLW6MW	646	10.99	58.78
2DL1535KM302SQLW6MW	843	14.74	57.19
2DL2035KM302SQLW6MW	1161	22.45	51.71

PRODUCT SELECTOR GUIDE

FRAME-IN KIT	INPUT VOLTAGE	OPTIONS	DLA ASSEMBLY	LUMENS	CCT	OPTIC	DIMMING	TRIM	TRIM OPTIONS	TRIM FINISH	FLANGE FINISH
2LFLK	E2		2DL	10	27K	S20	DA	2SQD	L5	MW	MF

FIXTURE HOUSING SPECIFICATION

FRAME-IN KIT	INPUT VOLTAGE	OPTIONS	DLA ASSEMBLY	LUMENS	CCT	OPTIC'	DIMMING
2LFLK	E1 120 Volt E2 277 Volt	EM Emergency Option	DOWNLIGHT	80 CRI	27K 2700K 3K 3000K 35K 3500K 4K 4000K	DOWNLIGHT	O-10V DIMMING OPTIONS
			2DL	8 658 Lm 10 1053 Lm 15 1376 Lm 20 2037 Lm		S20 22° M30 29° W40 41° XW55 49°	DX 1% 0-10V, 120V/277V DA Titanium, 1% Linear (DO10_ / 1%, 0-10V) DD EidoLED, 1% Logarithmic (EL10_ / 1% EidoLED)
			ADJUSTABLE	90 CRI		ADJUSTABLE	LUTRON
			2AL	8C9 540 Lm 10C9 865 Lm 15C9 1130 Lm 20C9 1672 Lm		S20 22° M30 29° W40 38° XW55 44°	DG Lutron Eco, 1% Linear (DL3E_ / 1% Lutron EcoSystem Fade)
WALL WASH			FORWARD/REVERSE PHASE				
2DL			DM 120V 2-wire, (DS2W1 / ELV/MLV, 120V)				
			Nominal Delivered lumens from Downlight at 35K 80/90 CRI M30	W Wide Distribution	1 Beam Distribution based on open trim		

TRIM / MODULE SPECIFICATION

TRIM	TRIM OPTIONS	TRIM FINISH	FLANGE FINISH / OPTIONS
DOWNLIGHT	DOWNLIGHT ONLY	MW Matte White MB Matte Black PT Platinum Silver CC Custom Color	MF ² Match Flange WF White Flange CCF Custom Color Flange NF Flangeless Kit
2SQD Open Downlight Trim	L5 Frosted Glass Lens L7 Solite Micro-Prismatic Lens L9 Clear Glass Lens		2 Select MF when choosing MW Trim finish and wanting matching flange
ADJUSTABLE	HC Honey Comb Louver		
2SQA Open Adjustable Trim			
WALL WASH			
2SQLW6 Lensed Wall Wash Trim			



FINISH**MW**
Matte White**MB**
Matte Black**PT**
Platinum Silver**PRODUCT FEATURES****FRAME-IN KIT:**

Heavy-gauge galvanized steel frame-in with cast-aluminum ceiling clamp collar, is available to ship and preinstall prior to insertion of the downlight (DLA) assembly. Accommodates ceiling thickness up to 1.5 inches. For use in accessible ceilings only. Locking clamp collar firmly attaches frame-in to ceiling material and engages DLA for a firm fit. All DLAs (downlight, adjustable, wall wash) are interchangeable with same frame-in kit. Vertically adjustable mounting brackets accept expandable hanger bars which are included.

DOWNLIGHT ASSEMBLY (DLA):

LED module provides reliable operation and consistent color between fixtures. CRI = 80. Available in 90 CRI. DLA is accessible from below. Accessible ceiling required to access driver which is mounted to junction box cover plate. Quick connectors between DLA and driver.

JUNCTION BOX:

Heavy-gauge galvanized junction box pre-wired with grounding pigtail. Easy access covers.

DIMMING:

Standard product is compatible with 0-10 volt dimming controls (1%) or 120 volt two-wire, forward/reverse phase (1%).

REFLECTOR:

Downlight: Dual-optic system includes upper reflector which determines the beam distribution and lower trim to finish the ceiling. Standard finish is matte white with matching flange. Optional finishes available. Round, square, downlight, and wall wash are interchangeable with same housing. Flangeless option (NF) installs after frame-ins are installed and can be added at a later date if desired.

Adjustable Accent: Dual-optic system includes upper reflector which determines the beam distribution and lower trim to finish the ceiling. Standard finish is matte white with matching flange. Optional finishes available. Round and square adjustable trims are interchangeable with same housing. Flangeless option (NF) installs after frame-ins are installed and can be added at a later date if desired.

Wall Wash: Angled laminated film lens illuminates vertical wall surfaces. Standard finish is matte white with matching flange. Optional finishes available. Round, square, downlight, and wall wash are interchangeable with same housing. Flangeless option (NF) installs after frame-ins are installed and can be added at a later date if desired.

ELECTRICAL:

120 or 277 VAC, 50-60 Hz.

HEAT MANAGEMENT:

Engineered heat sink provides passive cooling for optimum heat management of the LED engine.

- Expected lamp life to be 50,000 hours with 70% lumen maintenance
- when ambient temperatures do not exceed 25C. Lower ambient temperatures yield longer lamp life.

DUO 2" SQUARE

ACCESSIBLE CEILINGS

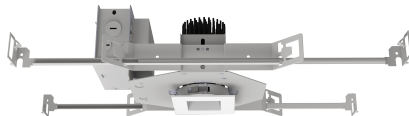
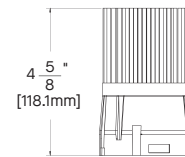
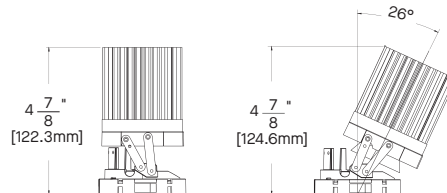
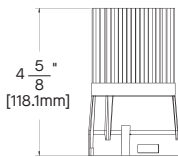
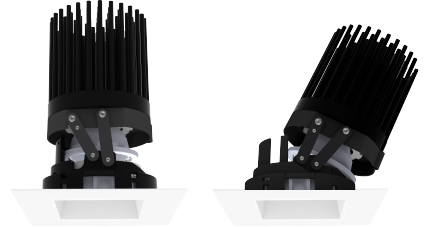


FIXTURE DIMENSIONS

2DL & 2SQD - Downlight

2AL & 2SQA - Adjustable

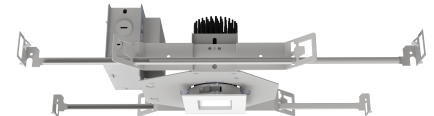
2DL & 2SQLW6 - Wall Wash



DOWNLIGHT TRIM SHOWN WITH 2LFK - NEW CONSTRUCTION STYLE



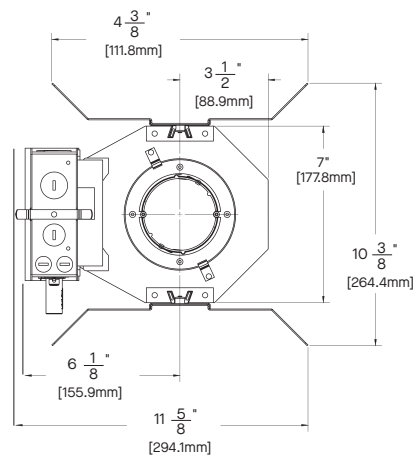
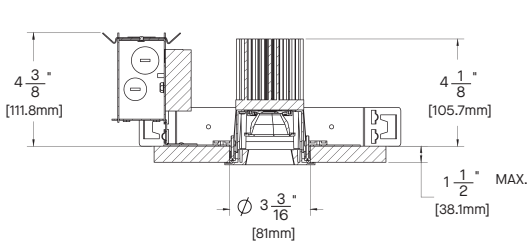
ADJUSTABLE TRIM SHOWN WITH 2LFK - NEW CONSTRUCTION STYLE



WALL WASH TRIM SHOWN WITH 2LFK - NEW CONSTRUCTION STYLE

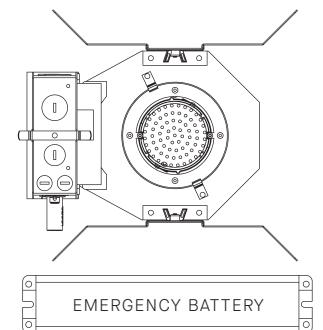
HOUSING DIMENSIONS

2LFK - New Construction



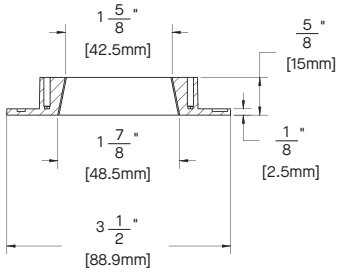
EMERGENCY BATTERY

EM - Emergency Options

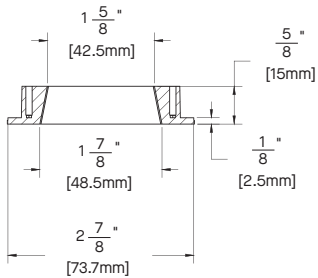


TRIM / MODULE DATA

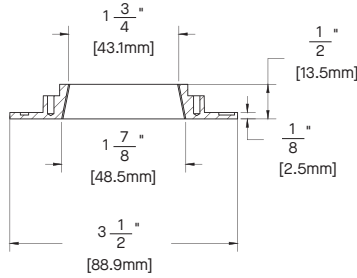
2SQD - Open Downlight Square Trim



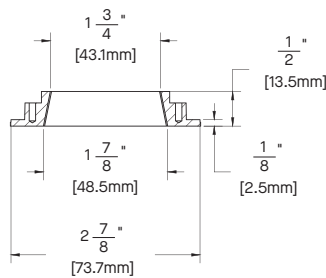
SQ2D NF - Open Downlight Square Trim with Flangeless Kit



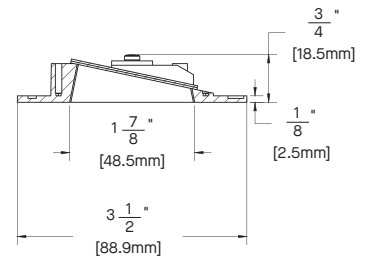
2SQA - Open Adjustable Square Trim



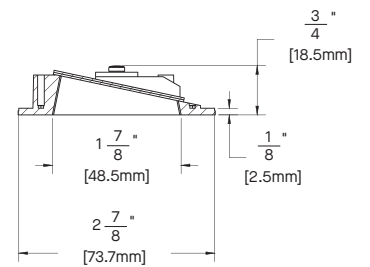
2SQA NF - Open Adjustable Square Trim with Flangeless Kit



2SQLW6 - Lensed Wall Wash Square Trim



2SQLW6 NF - Lensed Wall Wash Square Trim with Flangeless Kit



DUO 2" SQUARE

ACCESSIBLE CEILINGS



2DL2035KS202SQDMW - Downlight

CANDLEPOWER CURVE TEST SP-R925	INTENSITY CANDELA 0° AZIMUTH	ZONAL LUMENS	SINGLE UNIT: PERFORMANCE HORIZONTAL FOOTCANDLES INITIAL DOWNLIGHT ONLY				MULTIPLE UNITS: PERFORMANCE 80/50/20% REFLECTANCES HORIZONTAL FOOTCANDLES AND WATTS/SQ FT					
			Mounting Distance	FC at Beam Center	Diameter at Beam Angle	FC at Beam Edge	Ceiling Height	Fixture Spacing	RCR 3		RCR 5	
	0.00°	0° - 10° 663 32%	5.5'	293 fc	2.1'	135 fc	9'	2'	538	5.75	406	4.74
	0.00°	0° - 20° 1450 70%	6.5'	209 fc	2.5'	97 fc	12'	4'	133	1.42	132	1.54
	5.00°	0° - 30° 1878 90%	7.5'	157 fc	2.9'	73 fc	16'	6'	50	0.54	65	0.76
	10.00°	0° - 40° 1971 95%	8.5'	122 fc	3.3'	57 fc	Delivered Illuminance Rating: (DIR)		93 FC per W/Sq. Ft.		86 FC per W/Sq. Ft.	
	15.00°	0° - 60° 2025 97%	10.0'	88 fc	3.9'	41 fc	Recessed Mounting Square rooms used for multiple units: - RCR 3: Length & Width = Ceiling Ht. -2.5' x 3.33 - RCR 5: Length & Width = Ceiling Ht. -2.5' x 2.00 * Average Initial Footcandles at 2.5' Above Floor					
	20.00°	0° - 80° 2070 100%	12.0'	61 fc	4.7'	28 fc						
	30.00°	0° - 90° 2080 100%	14.0'	45 fc	5.4'	21 fc						
	40.00°	90.00° 5	16.0'	35 fc	6.2'	16 fc						
	50.00°											
	60.00°											
	70.00°											
	80.00°											
90.00°												

Delivered Lumens: **2080**
Luminaire Watts: **22.27**
LER: **93.40**

CP at 0deg (Nadir): **8848**
CRI: **80+**

Beam Angle: **21.91**
Spacing Ratio: **0.44**

Lumen Multiplier: **8L x 0.323, 10L x 0.517, 15L x 0.676**
CCT Multiplier: **27K x 0.919, 30K x 0.977, 40K x 1.005, 27HK x 0.924, 30HK x 0.963, 35HK x 1.0, 40HK 1.021**

2DL2035KM302SQDMW - Downlight

CANDLEPOWER CURVE TEST SP-R926	INTENSITY CANDELA 0° AZIMUTH	ZONAL LUMENS	SINGLE UNIT: PERFORMANCE HORIZONTAL FOOTCANDLES INITIAL DOWNLIGHT ONLY				MULTIPLE UNITS: PERFORMANCE 80/50/20% REFLECTANCES HORIZONTAL FOOTCANDLES AND WATTS/SQ FT					
			Mounting Distance	FC at Beam Center	Diameter at Beam Angle	FC at Beam Edge	Ceiling Height	Fixture Spacing	RCR 3		RCR 5	
	0.00°	0° - 10° 492 24%	5.5'	194 fc	2.9'	85 fc	9'	2'	430	4.79	389	4.78
	0.00°	0° - 20° 1300 64%	6.5'	139 fc	3.4'	61 fc	12'	4'	129	1.43	127	1.55
	5.00°	0° - 30° 1800 88%	7.5'	105 fc	3.9'	46 fc	16'	6'	49	0.54	40	0.49
	10.00°	0° - 40° 1919 94%	8.5'	81 fc	4.4'	36 fc	Delivered Illuminance Rating: (DIR)		90 FC per W/Sq. Ft.		82 FC per W/Sq. Ft.	
	15.00°	0° - 60° 1982 97%	10.0'	59 fc	5.2'	26 fc	Recessed Mounting Square rooms used for multiple units: - RCR 3: Length & Width = Ceiling Ht. -2.5' x 3.33 - RCR 5: Length & Width = Ceiling Ht. -2.5' x 2.00 * Average Initial Footcandles at 2.5' Above Floor					
	20.00°	0° - 80° 2028 100%	12.0'	41 fc	6.2'	18 fc						
	30.00°	0° - 90° 2037 100%	14.0'	30 fc	7.3'	13 fc						
	40.00°	90.00° 4	16.0'	23 fc	8.3'	10 fc						
	50.00°											
	60.00°											
	70.00°											
	80.00°											
90.00°												

Delivered Lumens: **2037**
Luminaire Watts: **22.42**
LER: **90.86**

CP at 0deg (Nadir): **5881**
CRI: **80+**

Beam Angle: **29.09**
Spacing Ratio: **0.56**

Lumen Multiplier: **27K x 0.919, 30K x 0.977, 40K x 1.005, 27HK x 0.924, 30HK x 0.963, 35HK x 1.0, 40HK 1.021**

2DL2035KW402SQDMW - Downlight

CANDLEPOWER CURVE TEST SP-R927	INTENSITY CANDELA 0° AZIMUTH	ZONAL LUMENS	SINGLE UNIT: PERFORMANCE HORIZONTAL FOOTCANDLES INITIAL DOWNLIGHT ONLY				MULTIPLE UNITS: PERFORMANCE 80/50/20% REFLECTANCES HORIZONTAL FOOTCANDLES AND WATTS/SQ FT					
			Mounting Distance	FC at Beam Center	Diameter at Beam Angle	FC at Beam Edge	Ceiling Height	Fixture Spacing	RCR 3		RCR 5	
	0.00°	0° - 10° 335 16%	5.5'	123 fc	4.1'	49 fc	9'	4'	105	1.19	94	1.19
	0.00°	0° - 20° 1061 52%	6.5'	88 fc	4.8'	35 fc	12'	4'	126	1.42	78	0.99
	5.00°	0° - 30° 1654 81%	7.5'	66 fc	5.6'	26 fc	16'	6'	48	0.54	39	0.49
	10.00°	0° - 40° 1874 92%	8.5'	52 fc	6.3'	20 fc	Delivered Illuminance Rating: (DIR)		89 FC per W/Sq. Ft.		79 FC per W/Sq. Ft.	
	15.00°	0° - 60° 1982 97%	10.0'	37 fc	7.4'	15 fc	Recessed Mounting Square rooms used for multiple units: - RCR 3: Length & Width = Ceiling Ht. -2.5' x 3.33 - RCR 5: Length & Width = Ceiling Ht. -2.5' x 2.00 * Average Initial Footcandles at 2.5' Above Floor					
	30.00°	0° - 80° 2033 100%	12.0'	26 fc	8.9'	10 fc						
	40.00°	0° - 90° 2042 100%	14.0'	19 fc	10.4'	8 fc						
	50.00°	90.00° 5	16.0'	15 fc	11.9'	6 fc						
	60.00°											
	70.00°											
	80.00°											
	90.00°											

Delivered Lumens: **2042**
Luminaire Watts: **22.27**
LER: **91.69**

CP at 0deg (Nadir): **3733**
CRI: **80+**

Beam Angle: **40.65**
Spacing Ratio: **0.71**

Lumen Multiplier: **8L x 0.323, 10L x 0.517, 15L x 0.676**
CCT Multiplier: **27K x 0.919, 30K x 0.977, 40K x 1.005, 27HK x 0.924, 30HK x 0.963, 35HK x 1.0, 40HK 1.021**

DUO 2" SQUARE

ACCESSIBLE CEILINGS



Spectrum Lighting

2DL2035KXW552SQDMW - Downlight

CANDLEPOWER CURVE TEST SP-R928	INTENSITY CANDELA 0° AZIMUTH	ZONAL LUMENS	SINGLE UNIT: PERFORMANCE HORIZONTAL FOOTCANDLES INITIAL DOWNLIGHT ONLY				MULTIPLE UNITS: PERFORMANCE 80/50/20% REFLECTANCES HORIZONTAL FOOTCANDLES AND WATTS/SQ FT							
			Mounting Distance	FC at Beam Center	Diameter at Beam Angle	FC at Beam Edge	Ceiling Height	Fixture Spacing	RCR 2		RCR 4			
	0.00°	0° - 10°	255	13%										
	0.00°	0° - 20°	876	44%										
	5.00°	0° - 30°	1538	77%	5.5'	93 fc	5.0'	33 fc	9'	4'	124	1.35	109	1.35
	10.00°	0° - 40°	1823	91%	6.5'	66 fc	6.0'	24 fc	12'	6'	58	0.63	51	0.63
	15.00°	0° - 60°	1938	97%	7.5'	50 fc	6.9'	18 fc	16'	10'	22	0.24	14	0.18
	20.00°	0° - 80°	1992	100%	8.5'	39 fc	7.8'	14 fc	Delivered Illuminance Rating: (DIR)		91 FC per W/Sq. Ft.		80 FC per W/Sq. Ft.	
	30.00°	0° - 90°	2002	100%	10.0'	28 fc	9.2'	10 fc	Recessed Mounting Square rooms used for multiple units: - RCR 2: Length & Width = Ceiling Ht. -2.5' x 5.00 - RCR 4: Length & Width = Ceiling Ht. -2.5' x 2.50 * Average Initial Footcandles at 2.5' Above Floor					
	40.00°	Total	2002	100%	12.0'	19 fc	11.0'	7 fc						
	50.00°				14.0'	14 fc	12.8'	5 fc						
	60.00°				16.0'	11 fc	14.7'	4 fc						
	70.00°													
	80.00°													
	2700 cd													

Delivered Lumens: 2002
Luminaire Watts: 22.35
LER: 89.57

CP at 0deg (Nadir): 2804
CRI: 80+

Beam Angle: 49.15
Spacing Ratio: 0.89

Lumen Multiplier: 8L x 0.323, 10L x 0.517, 15L x 0.676
27K x 0.919, 30K x 0.977, 40K x 1.005, 27HK x 0.924,
30HK x 0.963, 35HK x 1.0, 40HK 1.021

2AL2035KS202SQAMW-MAX - Adjustable

CANDLEPOWER CURVE TEST SP-R1759	INTENSITY	ZONAL LUMENS	INITIAL FC ON VERTICAL PLANE 30° aiming angle				INITIAL FC ON HORIZONTAL PLANE 30° aiming angle										
			A	B	C	1	2	3	W	L1	L2	A	B	C	1	2	3
	CP at 0°	0° - 10°	19	1%													
		0° - 20°	168	10%													
		0° - 30°	691	41%													
	0°	0° - 40°	1335	80%													
		0° - 60°	1618	97%													
	90°	0° - 80°	1660	100%													
	0° - 90°	1666	100%	Dimensions W, L1 and L2 based on beam angle				Dimensions W, L1 and L2 based on beam angle									

Delivered Lumens: 1666
Luminaire Watts: 22.52
Efficacy: 73.98

CP at 0° (Nadir): 105
CRI: 80+

Beam Angle: 20°

Lumen Multiplier: 8L x 0.29, 10L x 0.494, 15L x 0.592
27K x 0.919, 30K x 0.977, 40K x 1.005, 27HK x 0.924,
30HK x 0.963, 35HK x 1.0, 40HK 1.021

2AL2035KM302SQAMW-MAX - Adjustable

CANDLEPOWER CURVE TEST SP-R1761	INTENSITY	ZONAL LUMENS	INITIAL FC ON VERTICAL PLANE 30° aiming angle				INITIAL FC ON HORIZONTAL PLANE 30° aiming angle													
			A	B	C	1	2	3	W	L1	L2	A	B	C	1	2	3	W	L1	L2
	CP at 0°	0° - 10°	55	3%																
	0°	0° - 20°	319	19%																
	5°	0° - 30°	838	51%																
	15°	0° - 40°	1354	82%																
	25°	0° - 60°	1611	97%																
	35°	0° - 80°	1648	100%																
	45°	0° - 90°	1653	100%									Dimensions W, L1 and L2 based on beam angle				Dimensions W, L1 and L2 based on beam angle			
	55°																			
	65°																			
	75°																			
85°																				
4500 cd																				

Delivered Lumens: 1653
Luminaire Watts: 22.57
Efficacy: 73.24

CP at 0° (Nadir): 380
CRI: 80+

Beam Angle: 27°

CCT Multiplier: 27K x 0.919, 30K x 0.977, 40K x 1.005, 27HK x 0.924,
30HK x 0.963, 35HK x 1.0, 40HK 1.021

DUO 2" SQUARE

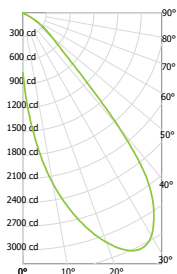
ACCESSIBLE CEILINGS



Spectrum Lighting

2AL2035KW402SQAMW-MAX - Adjustable

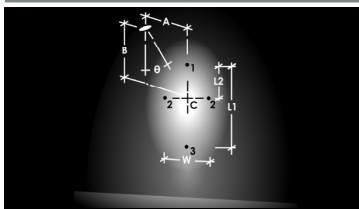
CANDLEPOWER CURVE TEST SP-R1763



INTENSITY	CP at 0°
	CP at 0°
0°	756
5°	1503
15°	2701
25°	3319
35°	2854
45°	816
55°	308
65°	11
75°	6
85°	4
90°	2

ZONAL LUMENS			
0° - 10°	86	6%	
0° - 20°	386	25%	
0° - 30°	839	54%	
0° - 40°	1238	80%	
0° - 60°	1494	97%	
0° - 80°	1536	100%	
0° - 90°	1543	100%	

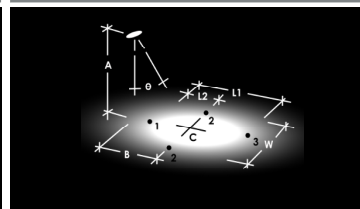
INITIAL FC ON VERTICAL PLANE 30° aiming angle



A	B	C	1	2	3	W	L1	L2
2'	3.5'	24 fc	38 fc	8 fc	1 fc	2.5'	7.1'	1.6'
3'	5.2'	11 fc	17 fc	4 fc	0 fc	3.8'	10.6'	2.4'
4'	6.9'	6 fc	9 fc	2 fc	0 fc	5.0'	14.2'	3.2'
6'	10.4'	3 fc	4 fc	1 fc	0 fc	7.5'	21.3'	4.9'

Dimensions W, L1 and L2 based on beam angle

INITIAL FC ON HORIZONTAL PLANE 30° aiming angle



A	B	C	1	2	3	W	L1	L2
6'	3.5'	14 fc	10 fc	6 fc	3 fc	4.3'	5.2'	2.1'
8'	4.6'	8 fc	5 fc	3 fc	2 fc	5.8'	6.9'	2.8'
10'	5.8'	5 fc	4 fc	2 fc	1 fc	7.2'	8.6'	3.5'
12'	6.9'	3 fc	2 fc	2 fc	1 fc	8.7'	10.4'	4.2'

Dimensions W, L1 and L2 based on beam angle

Delivered Lumens: 1543
Luminaire Watts: 22.58
Efficacy: 68.33

CP at 0° (Nadir): 756

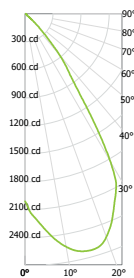
Beam Angle: 35°

Lumen Multiplier: 8L x 0.29, 10L x 0.494, 15L x 0.592
27K x 0.919, 30K x 0.977, 40K x 1.005, 27HK x 0.924,
30HK x 0.963, 35HK x 1.0, 40HK 1.021

CRI: 80+

2AL2035KXW552SQAMW-MAX - Adjustable

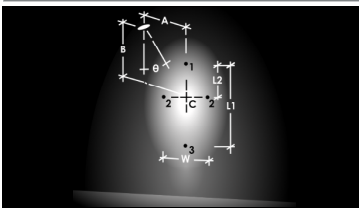
CANDLEPOWER CURVE TEST SP-R1745



INTENSITY	CP at 0°
	CP at 0°
0°	2009
15°	2628
45°	240
75°	12
90°	5

ZONAL LUMENS			
0° - 10°	183	13%	
0° - 20°	613	42%	
0° - 30°	1042	72%	
0° - 40°	1275	88%	
0° - 60°	1377	95%	
0° - 80°	1429	99%	
0° - 90°	1444	100%	

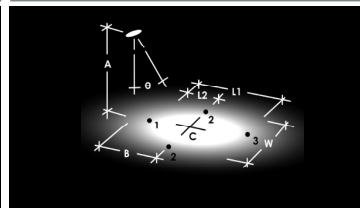
INITIAL FC ON VERTICAL PLANE 30° aiming angle



A	B	C	1	2	3	W	L1	L2
2'	3.5'	63 fc	115 fc	20 fc	1 fc	3.0'	10.2'	1.8'
3'	5.2'	28 fc	51 fc	9 fc	1 fc	4.5'	15.4'	2.7'
4'	6.9'	16 fc	29 fc	5 fc	0 fc	6.0'	20.5'	3.6'
6'	10.4'	7 fc	13 fc	2 fc	0 fc	9.0'	30.7'	5.4'

Dimensions W, L1 and L2 based on beam angle

INITIAL FC ON HORIZONTAL PLANE 30° aiming angle



A	B	C	1	2	3	W	L1	L2
6'	3.5'	36 fc	27 fc	16 fc	7 fc	5.2'	6.3'	2.5'
8'	4.6'	20 fc	15 fc	9 fc	4 fc	6.9'	8.3'	3.3'
10'	5.8'	13 fc	10 fc	6 fc	3 fc	8.6'	10.4'	4.1'
12'	6.9'	9 fc	7 fc	4 fc	2 fc	10.3'	12.5'	4.9'

Dimensions W, L1 and L2 based on beam angle

Delivered Lumens: 1444
Luminaire Watts: 22.52
Efficacy: 64.12

CP at 0° (Nadir): 2009

Beam Angle: 41°

Lumen Multiplier: 8L x 0.29, 10L x 0.494, 15L x 0.592
27K x 0.919, 30K x 0.977, 40K x 1.005, 27HK x 0.924,
30HK x 0.963, 35HK x 1.0, 40HK 1.021

CRI: 80+

DUO 2" SQUARE

ACCESSIBLE CEILINGS

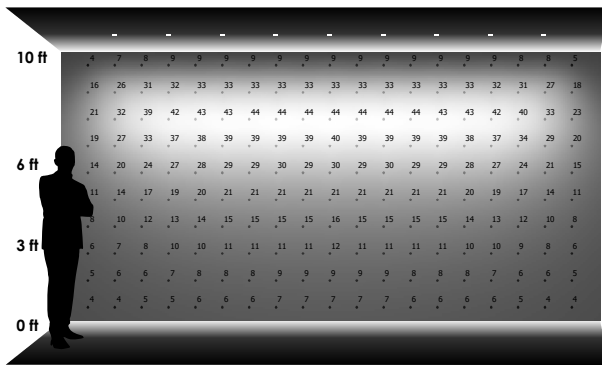


Spectrum Lighting

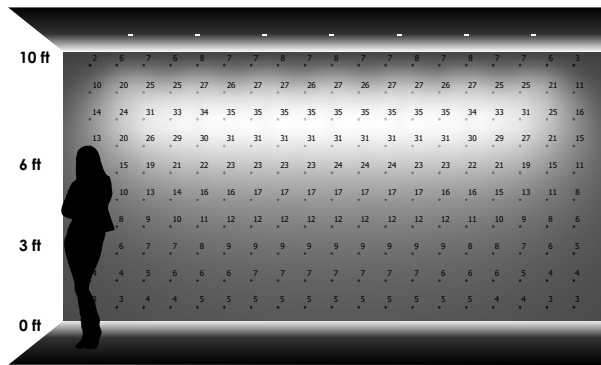
2DL2035KW2SQLW6MW - Wall Wash

CANDLEPOWER CURVE TEST SP-R962	PERFORMANCE SUMMARY	REFERENCE DIAGRAM
	<p>Delivered Lumens: 1161 Luminaire Watts: 22.45 LER: 51.71</p> <p>CP at 0deg (Nadir): 451 CRI: 80+</p> <p>CCT Multiplier: 27K x 0.919, 30K x 0.977, 40K x 1.005, 27HK x 0.924, 30HK x 0.963, 35HK x 1.0, 40HK 1.021</p>	

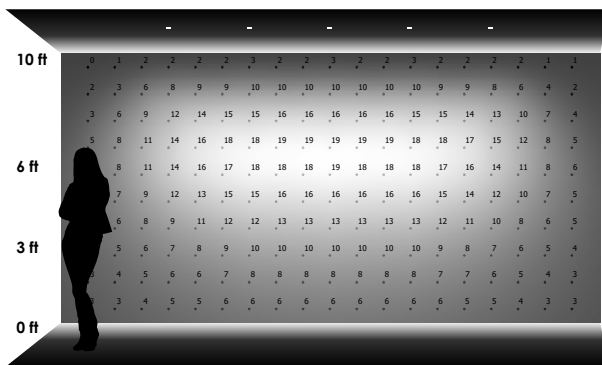
PERFORMANCE DATA - INITIAL ILLUMINATION (FOOTCANDLES) ON WALL - DIRECT LIGHT ONLY



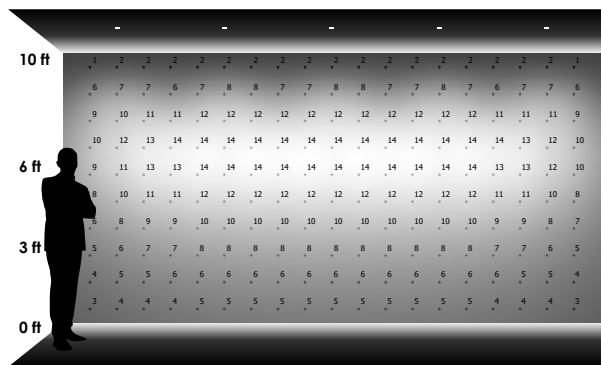
9 LUMINAIRES
 2' - 0" away from wall
 2' - 0" between luminaires



7 LUMINAIRES
 2' - 6" away from wall
 2' - 6" between luminaires



5 LUMINAIRES
 3' - 0" away from wall
 3' - 0" between luminaires



5 LUMINAIRES
 3' - 0" away from wall
 4' - 0" between luminaires