



PROJECT: _____
 QUANTITY: _____ TYPE: _____

5" MODULAR ACCENT LIGHT

SUSPENDED / SURFACE

MR16 SERIES / 2 OR 3 MODULES

SC51-LV

APPLICATION

SC 5" series MR16 Low Voltage suspended/surface accent light.

FEATURES

Surface mounted modular accent fixture. Fixture heads rotate 359°, lock and tilt to 38° for optimal aiming. Standard front loading lamp bezel accepts up to two lens/louver options. Three accessory options are available (3AC). Maximum wattage label (MWL) for low wattage Halogen or LED lamps.

FINISH

A variety of architectural powder-coat finishes for interior and exterior of fixture are available.

ELECTRONICS

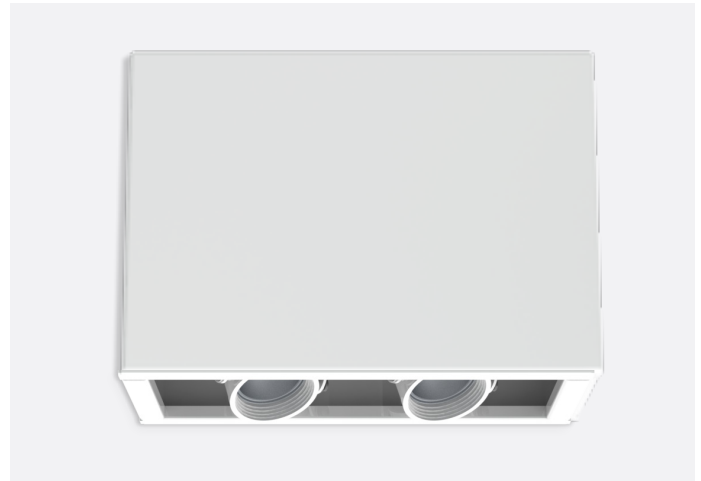
Electronic 120V transformer is standard. 277V electronic, 120V and 277V LED rated electronic and remote transformer options. High temperature rated porcelain GU10 socket. 37W per lamp max.

CONSTRUCTION

Housing formed of #18 gauge 5052-H32 aluminum, seam welded and finished to specification. Fixture modules die-cast and machined aluminum.

CODE COMPLIANCE

ARRA Compliant. ETL listed for damp locations. Manufactured and tested to UL Standards No. 1598/8750.



SERIES	LAMPS	TRANSFORMER / VOLTAGE		OPTIONS ¹	MOUNTING ²		INTERIOR	FINISHES
SC510LV 2 Module	MR16	E E_LED	Electronic Driver	1	120V	2xHM ³ 2-Hand Hang Straight Pendant (3/8 IPS) 2xPM ³ Rigid Pendant (3/8 IPS) 4xCD ³ 4xCD SM Surface Mount	MWI Matte White Interior MBI Matte Black Interior PTI Platinum Silver Interior BZI Bronze Interior CCI Custom Color Interior	MWI Matte White Interior MBI Matte Black Interior PTI Platinum Silver Interior BZI Bronze Interior CCI Custom Color Interior
			Transformer for Use with LED MR16 Lamps	2	277V			
SC515LV 3 Module				GL16 Clear FG16 Frosted SK16 Linear SO16 Solite Diffusion HL16 Hex Louver NL No Lens				
				OPTIONS MWL(**) Max Wattage Label				
				1. See Product Page for Details - Front Loading Lamp Bezel Accepts Up To 1 Lens/Louver Option				
					2. Suspension Points with Power 3. Specify in Inches: See Mounting Page for Available Lengths			
							Reference Color Sheet Located on Product Webpage For Full List of Available Colors.	

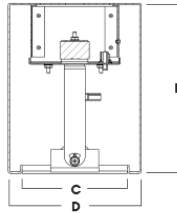
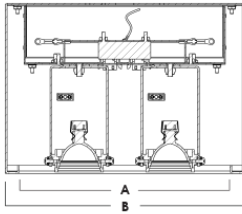
EXAMPLE: SC510LVMR16E1GL16SMMWIMWI



5" MODULAR ACCENT LIGHT



FIXTURE DIMENSIONS



SERIES	A	B	C	D	E
SC510LV	10.0	11.3	5.0	6.3	8.0
SC515LV	15.0	16.3	5.0	6.3	8.0

CEILING MOUNTING

<p>HM* HANG STRAIGHT 45° SWIVEL 1/2" STEM - 3/8" NPT</p> <p>ORDER: HM (Length) SPECIFY LENGTH: HM3 - 3" HM24 - 24" HM6 - 6" HM36 - 36" HM12 - 12" HM48 - 48" HM18 - 18" HM72 - 72" HMLC(XX) Custom Length (Specify in Inches)</p>	<p>PM* RIGID PENDANT MOUNT RIGID 1/2" STEM - 3/8" NPT</p> <p>ORDER: PM (Length) SPECIFY LENGTH: PM3 - 3" PM24 - 24" PM6 - 6" PM36 - 36" PM12 - 12" PM48 - 48" PM18 - 18" PM72 - 72" PMLLC(XX) Custom Length (Specify in Inches)</p>	<p>CD CORD / CABLE MOUNT SJ CORD WITH 1/16 SS CABLE</p> <p>ORDER: CD (Length) SPECIFY LENGTH: CD36 - 36" CD72 - 72" CD144 - 144" CDLC(XX) Custom Length (Specify in Inches)</p>	<p>SM SURFACE MOUNT FIXTURE HOUSING MOUNTS DIRECTLY TO J-BOX AND/OR CEILING</p>
--	--	---	--

*MAXIMUM ONE PIECE STEM LENGTH IS 72". **MAXIMUM ONE PIECE STEM LENGTH IS 36". LONGER LENGTHS ARE POSSIBLE USING MULTIPLE STEMS AND COUPLERS.
**ORDER IN 12" INCREMENTS, ODD SIZES MAY BE FIELD CUT