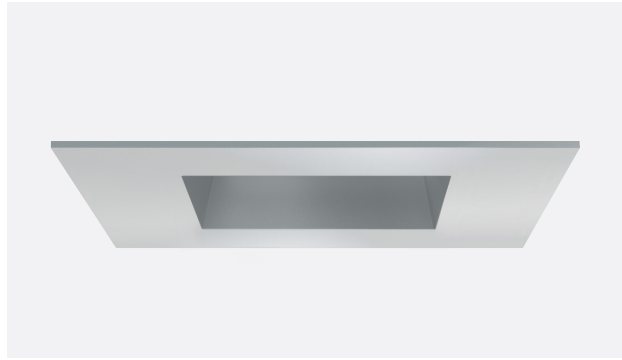


DUO 2" SQUARE

INACCESSIBLE CEILINGS

DOWNLIGHT / ADJUSTABLE ACCENT / WALL WASH

Spectrum's 2" aperture recessed LED downlight fixture is ideal for application where discrete lighting is desired. Suitable for inaccessible and non-insulated ceilings only. Multiple beam distributions provide flexibility to the lighting designer.



DOWNLIGHT LUMENS / WATTAGE DATA			
PART NUMBER	DELIVERED LUMENS	SYSTEM WATTS	LPW
2DL835KM302SQDMW	658	6.45	658
2DL1035KM302SQDMW	1053	10.99	95.81
2DL1535KM302SQDMW	1376	14.8	92.97
2DL2035KM302SQDMW	2037	22.42	90.86

ADJUSTABLE LUMENS / WATTAGE DATA			
PART NUMBER	DELIVERED LUMENS	SYSTEM WATTS	LPW
2AL835KM302SQAMW	565	6.45	87.6
2AL1035KM302SQAMW	860	10.99	78.25
2AL1535KM302SQAMW	1116	14.7	75.92
2AL2035KM302SQAMW	1652	22.54	73.29

WALL WASH LUMENS / WATTAGE DATA			
PART NUMBER	DELIVERED LUMENS	SYSTEM WATTS	LPW
2DL835KM302SQLW6MW	404	6.45	62.64
2DL1035KM302SQLW6MW	646	10.99	58.78
2DL1535KM302SQLW6MW	843	14.74	57.19
2DL2035KM302SQLW6MW	1161	22.45	51.71

PRODUCT SELECTOR GUIDE

FRAME-IN KIT	DLA ASSEMBLY	LUMENS	CCT	OPTIC	DIMMING	INPUT VOLTAGE	TRIM	TRIM OPTIONS	TRIM FINISH	FLANGE FINISH
EXAMPLE										
RM2LFKNA	2DLNA	10	3K	M30	DX	E1	2SQD	L5	MW	MF

FIXTURE HOUSING SPECIFICATION

FRAME-IN KIT	DLA ASSEMBLY	LUMENS	CCT	OPTIC ¹	DIMMING	INPUT VOLTAGE	
2LFKNA (NEW CONSTRUCTION STYLE)	2DLNA (DOWNLIGHT & WALL WASH)	80 CRI		27K 2700K 3K 3000K 35K 3500K 4K 4000K	DOWNLIGHT S20 22° M30 29° W40 41° XW55 49°	0-10V DIMMING OPTIONS DX 1% 0-10V, 120V/277V	E1 120 Volt E2 277 Volt
		8 658 Lm 10 1053 Lm 15 1376 Lm 20 2037 Lm					
RM2LFKNA (REMODEL STYLE)	2ALNA (ADJUSTABLE ACCENT)	90 CRI			ADJUSTABLE S20 22° M30 29° W40 38° XW55 44°	FORWARD/REVERSE PHASE DM 120V 2-wire, (DS2W1 / ELV/MLV, 120V)	
		8C9 540 Lm 10C9 865 Lm 15C9 1130 Lm 20C9 1672 Lm					
		Nominal Delivered lumens from Downlight at 35K 80/90 CRI M30			WALL WASH W Wide Distribution		
					1 Beam Distribution based on open trim		

TRIM / MODULE SPECIFICATION

TRIM	TRIM OPTIONS	TRIM FINISH	FLANGE FINISH / OPTIONS
DOWNLIGHT	DOWNLIGHT ONLY	MW Matte White MB Matte Black PT Platinum Silver CC Custom Color	MF Match Flange WF White Flange CCF Custom Color Flange NF Flangeless Kit
2SQD Open Downlight Trim	L5 Frosted Glass Lens L7 Solite Micro-Prismatic Lens L9 Clear Glass Lens		
ADJUSTABLE	HC Honey Comb Louver		
2SQA Open Adjustable Trim			
WALL WASH			
2SQLW6 Lensed Wall Wash Trim			

2 Select MF when choosing MW Trim finish and wanting matching flange
 3 Not available with RM2LFKNA Remodel Style Frame-in Kit



FINISH**MW**
Matte White**MB**
Matte Black**PT**
Platinum Silver**PRODUCT FEATURES****FRAME-IN KIT**

Heavy-gauge galvanized steel frame-in with cast-aluminum ceiling clamp collar, is available to ship and preinstall prior to insertion of the downlight (DLA) assembly. Accommodates ceiling thickness up to 1.5 inches (Remodel is 3/4"). Locking clamp collar firmly attaches frame-in to ceiling material and engages DLA for a firm fit. All DLAs (downlight, adjustable, wall wash) are interchangeable with same frame-in kit. Vertically adjustable mounting brackets accept expandable hanger bars which are included.

DOWNLIGHT ASSEMBLY (DLA)

LED module provides reliable operation and consistent color between fixtures. CRI = 80. Available in 90 CRI. Corded driver assembly features a wiring compartment with a single knock-out enabling a duplex connector to be used for in and out branch wiring. Quick connectors between DLA and driver. DLA and driver are accessible from below, by removing DLA and driver can from the ceiling plenum through the installation hole.

DIMMING

Standard product is compatible with 0-10 volt dimming controls (1%) or 120 volt two-wire, forward/reverse phase (1%). For other dimming options such as Lutron and eldoLED, see other product styles that are only suitable for accessible ceilings.

REFLECTOR

Downlight: Dual-optic system includes upper reflector which determines the beam distribution and lower trim to finish the ceiling. Standard finish is matte white with matching flange. Optional finishes available. Round, square, downlight, and wall wash are interchangeable with same housing. Flangeless option (NF) installs after frame-ins are installed and can be added at a later date if desired. (NF not available on remodel style).

Adjustable Accent: Dual-optic system includes upper reflector which determines the beam distribution and lower trim to finish the ceiling. Standard finish is matte white with matching flange. Optional finishes available. Round and square adjustable trims are interchangeable with same housing. Trims are retained securely using magnets. Flangeless option (NF) installs after frame-ins are installed and can be added at a later date if desired. (NF not available in remodel style).

Wall Wash: Angled laminated film lens illuminates vertical wall surfaces. Standard finish is matte white with matching flange. Optional finishes available. Round, square, downlight, and wall wash are interchangeable with same housing. Flangeless option (NF) installs after frame-ins are installed and can be added at a later date if desired. (NF not available on remodel style).

ELECTRICAL

120 or 277 VAC, 50-60 Hz.

HEAT MANAGEMENT

Engineered heat sink provides passive cooling for optimum heat management of the LED engine.

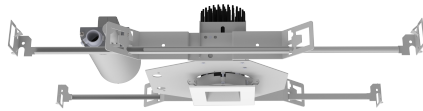
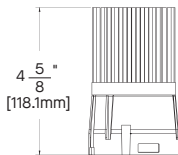
- Expected lamp life to be 50,000 hours with 70% lumen maintenance when ambient temperatures do not exceed 25C. Lower ambient temperatures yield longer lamp life.

DUO 2" SQUARE INACCESSIBLE CEILINGS



FIXTURE DIMENSIONS

2DLNA & 2SQD - Downlight

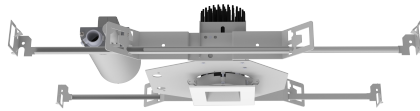
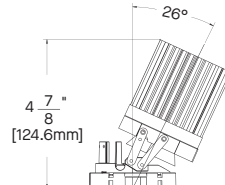
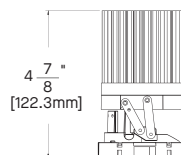


DOWNLIGHT TRIM SHOWN WITH 2LKFNA - NEW CONSTRUCTION STYLE



DOWNLIGHT TRIM SHOWN WITH RM2LFKNA - REMODEL STYLE

2ALNA & 2SGA - Adjustable

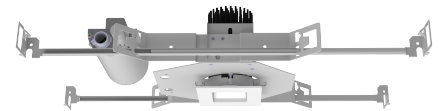
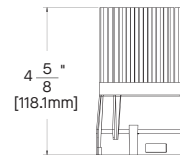


ADJUSTABLE TRIM SHOWN WITH 2LKFNA - NEW CONSTRUCTION STYLE



ADJUSTABLE TRIM SHOWN WITH RM2LFKNA - REMODEL STYLE

2DLNA & 2SQLW6 - Wall Wash



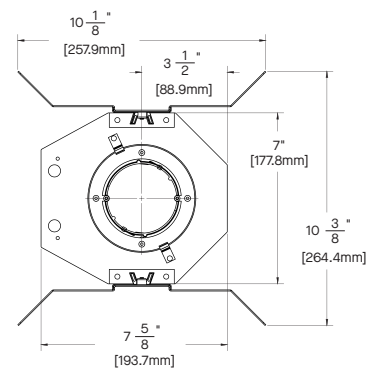
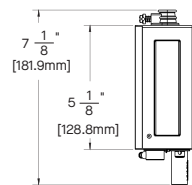
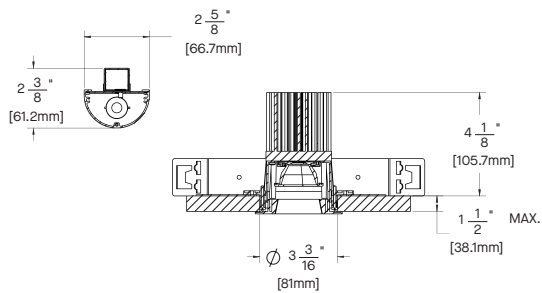
WALL WASH TRIM SHOWN WITH 2LKFNA - NEW CONSTRUCTION STYLE



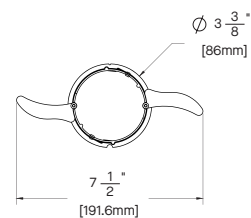
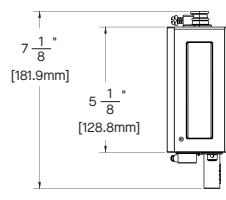
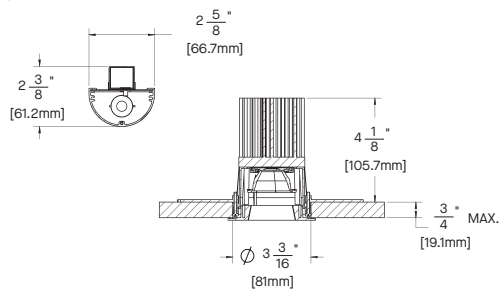
WALL WASH TRIM SHOWN WITH RM2LFKNA - REMODEL STYLE

HOUSING DIMENSIONS

2LKFNA - New Construction Style

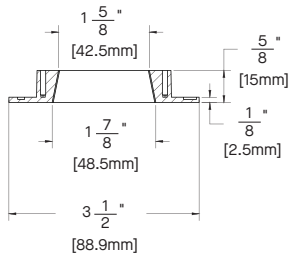


RM2LFKNA - Remodel Style

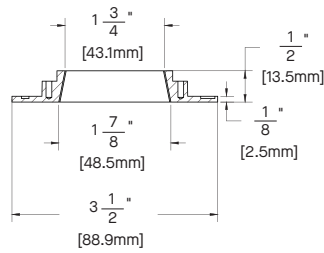


TRIM / MODULE DATA

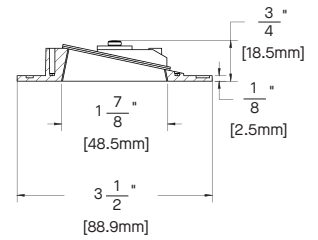
2SQD - Open Downlight Square Trim



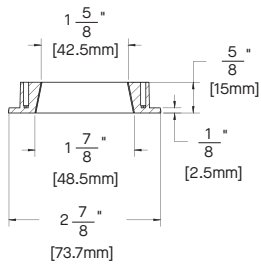
2SQA - Open Adjustable Square Trim



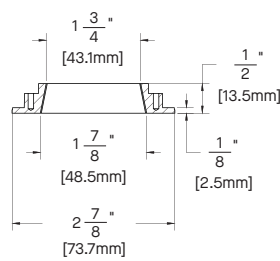
2SQLW6 - Lensed Wall Wash Square Trim



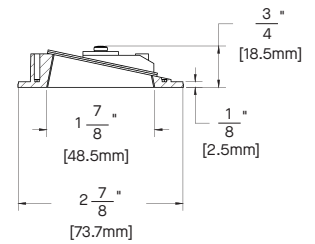
SQ2D NF - Open Downlight Square Trim with Flangeless Kit



2SQA NF - Open Adjustable Square Trim with Flangeless Kit



2SQLW6 NF - Lensed Wall Wash Square Trim with Flangeless Kit



DUO 2" SQUARE

INACCESSIBLE CEILINGS



Spectrum Lighting

2DL2035KS202SQDMW - Downlight

CANDLEPOWER CURVE TEST SP-R925	INTENSITY CANDELA 0° AZIMUTH	ZONAL LUMENS	SINGLE UNIT: PERFORMANCE HORIZONTAL FOOTCANDLES INITIAL DOWNLIGHT ONLY				MULTIPLE UNITS: PERFORMANCE 80/50/20% REFLECTANCES HORIZONTAL FOOTCANDLES AND WATTS/SQ FT					
			Mounting Distance	FC at Beam Center	Diameter at Beam Angle	FC at Beam Edge	Ceiling Height	Fixture Spacing	RCR 3		RCR 5	
	0.00°	0° - 10° 663 32%	5.5'	293 fc	2.1'	135 fc	9'	2'	538	5.75	406	4.74
	0.00°	0° - 20° 1450 70%	6.5'	209 fc	2.5'	97 fc	12'	4'	133	1.42	132	1.54
	5.00°	0° - 30° 1878 90%	7.5'	157 fc	2.9'	73 fc	16'	6'	50	0.54	65	0.76
	10.00°	0° - 40° 1971 95%	8.5'	122 fc	3.3'	57 fc	Delivered Illuminance Rating: (DIR)		93 FC per W/Sq. Ft.		86 FC per W/Sq. Ft.	
	15.00°	0° - 60° 2025 97%	10.0'	88 fc	3.9'	41 fc	Recessed Mounting Square rooms used for multiple units: - RCR 3: Length & Width = Ceiling Ht. -2.5' x 3.33 - RCR 5: Length & Width = Ceiling Ht. -2.5' x 2.00 * Average Initial Footcandles at 2.5' Above Floor					
	20.00°	0° - 80° 2070 100%	12.0'	61 fc	4.7'	28 fc						
	30.00°	0° - 90° 2080 100%	14.0'	45 fc	5.4'	21 fc						
	40.00°	90.00° 5	16.0'	35 fc	6.2'	16 fc						
	50.00°											
	60.00°											
	70.00°											
	80.00°											
90.00°												

Delivered Lumens: 2080
Luminaire Watts: 22.27
LER: 93.40

CP at 0deg (Nadir): 8848
CRI: 80+

Beam Angle: 21.91
Spacing Ratio: 0.44

Lumen Multiplier: 8L x 0.323, 10L x 0.517, 15L x 0.676
27K x 0.919, 30K x 0.977, 40K x 1.005, 27HK x 0.924,
30HK x 0.963, 35HK x 1.0, 40HK 1.021

2DL2035KM302SQDMW - Downlight

CANDLEPOWER CURVE TEST SP-R926	INTENSITY CANDELA 0° AZIMUTH	ZONAL LUMENS	SINGLE UNIT: PERFORMANCE HORIZONTAL FOOTCANDLES INITIAL DOWNLIGHT ONLY				MULTIPLE UNITS: PERFORMANCE 80/50/20% REFLECTANCES HORIZONTAL FOOTCANDLES AND WATTS/SQ FT					
			Mounting Distance	FC at Beam Center	Diameter at Beam Angle	FC at Beam Edge	Ceiling Height	Fixture Spacing	RCR 3		RCR 5	
	0.00°	0° - 10° 492 24%	5.5'	194 fc	2.9'	85 fc	9'	2'	430	4.79	389	4.78
	0.00°	0° - 20° 1300 64%	6.5'	139 fc	3.4'	61 fc	12'	4'	129	1.43	127	1.55
	5.00°	0° - 30° 1800 88%	7.5'	105 fc	3.9'	46 fc	16'	6'	49	0.54	40	0.49
	10.00°	0° - 40° 1919 94%	8.5'	81 fc	4.4'	36 fc	Delivered Illuminance Rating: (DIR)		90 FC per W/Sq. Ft.		82 FC per W/Sq. Ft.	
	15.00°	0° - 60° 1982 97%	10.0'	59 fc	5.2'	26 fc	Recessed Mounting Square rooms used for multiple units: - RCR 3: Length & Width = Ceiling Ht. -2.5' x 3.33 - RCR 5: Length & Width = Ceiling Ht. -2.5' x 2.00 * Average Initial Footcandles at 2.5' Above Floor					
	20.00°	0° - 80° 2028 100%	12.0'	41 fc	6.2'	18 fc						
	30.00°	0° - 90° 2037 100%	14.0'	30 fc	7.3'	13 fc						
	40.00°	90.00° 4	16.0'	23 fc	8.3'	10 fc						
	50.00°											
	60.00°											
	70.00°											
	80.00°											
90.00°												

Delivered Lumens: 2037
Luminaire Watts: 22.42
LER: 90.86

CP at 0deg (Nadir): 5881
CRI: 80+

Beam Angle: 29.09
Spacing Ratio: 0.56

Lumen Multiplier: 27K x 0.919, 30K x 0.977, 40K x 1.005, 27HK x 0.924,
30HK x 0.963, 35HK x 1.0, 40HK 1.021

2DL2035KW402SQDMW - Downlight

CANDLEPOWER CURVE TEST SP-R927	INTENSITY CANDELA 0° AZIMUTH	ZONAL LUMENS	SINGLE UNIT: PERFORMANCE HORIZONTAL FOOTCANDLES INITIAL DOWNLIGHT ONLY				MULTIPLE UNITS: PERFORMANCE 80/50/20% REFLECTANCES HORIZONTAL FOOTCANDLES AND WATTS/SQ FT					
			Mounting Distance	FC at Beam Center	Diameter at Beam Angle	FC at Beam Edge	Ceiling Height	Fixture Spacing	RCR 3		RCR 5	
	0.00°	0° - 10° 335 16%	5.5'	123 fc	4.1'	49 fc	9'	4'	105	1.19	94	1.19
	0.00°	0° - 20° 1061 52%	6.5'	88 fc	4.8'	35 fc	12'	4'	126	1.42	78	0.99
	5.00°	0° - 30° 1654 81%	7.5'	66 fc	5.6'	26 fc	16'	6'	48	0.54	39	0.49
	10.00°	0° - 40° 1874 92%	8.5'	52 fc	6.3'	20 fc	Delivered Illuminance Rating: (DIR)		89 FC per W/Sq. Ft.		79 FC per W/Sq. Ft.	
	15.00°	0° - 60° 1982 97%	10.0'	37 fc	7.4'	15 fc	Recessed Mounting Square rooms used for multiple units: - RCR 3: Length & Width = Ceiling Ht. -2.5' x 3.33 - RCR 5: Length & Width = Ceiling Ht. -2.5' x 2.00 * Average Initial Footcandles at 2.5' Above Floor					
	30.00°	0° - 80° 2033 100%	12.0'	26 fc	8.9'	10 fc						
	40.00°	0° - 90° 2042 100%	14.0'	19 fc	10.4'	8 fc						
	50.00°	90.00° 5	16.0'	15 fc	11.9'	6 fc						
	60.00°											
	70.00°											
	80.00°											
	90.00°											

Delivered Lumens: 2042
Luminaire Watts: 22.27
LER: 91.69

CP at 0deg (Nadir): 3733
CRI: 80+

Beam Angle: 40.65
Spacing Ratio: 0.71

Lumen Multiplier: 8L x 0.323, 10L x 0.517, 15L x 0.676
27K x 0.919, 30K x 0.977, 40K x 1.005, 27HK x 0.924,
30HK x 0.963, 35HK x 1.0, 40HK 1.021

DUO 2" SQUARE

INACCESSIBLE CEILINGS



Spectrum Lighting

2DL2035KXW552SQDMW - Downlight

CANDLEPOWER CURVE TEST SP-R928	INTENSITY CANDELA 0° AZIMUTH	ZONAL LUMENS	SINGLE UNIT: PERFORMANCE HORIZONTAL FOOTCANDLES INITIAL DOWNLIGHT ONLY				MULTIPLE UNITS: PERFORMANCE 80/50/20% REFLECTANCES HORIZONTAL FOOTCANDLES AND WATTS/SQ FT							
			Mounting Distance	FC at Beam Center	Diameter at Beam Angle	FC at Beam Edge	Ceiling Height	Fixture Spacing	RCR 2		RCR 4			
	0.00°	0° - 10°	255	13%	5.5'	93 fc	5.0'	33 fc	9'	4'	124	1.35	109	1.35
	0.00°	0° - 20°	876	44%	6.5'	66 fc	6.0'	24 fc	12'	6'	58	0.63	51	0.63
	5.00°	0° - 30°	1538	77%	7.5'	50 fc	6.9'	18 fc	16'	10'	22	0.24	14	0.18
	10.00°	0° - 40°	1823	91%	8.5'	39 fc	7.8'	14 fc	Delivered Illuminance Rating: (DIR)		91 FC per W/Sq. Ft.		80 FC per W/Sq. Ft.	
	15.00°	0° - 60°	1938	97%	10.0'	28 fc	9.2'	10 fc	Recessed Mounting Square rooms used for multiple units: - RCR 2: Length & Width = Ceiling Ht. - 2.5' x 5.00 - RCR 4: Length & Width = Ceiling Ht. - 2.5' x 2.50 * Average Initial Footcandles at 2.5' Above Floor					
	20.00°	0° - 80°	1992	100%	12.0'	19 fc	11.0'	7 fc						
	30.00°	0° - 90°	2002	100%	14.0'	14 fc	12.8'	5 fc						
	40.00°				16.0'	11 fc	14.7'	4 fc						
	50.00°													
	60.00°													
	70.00°													
	80.00°													
90.00°														
		Total	2002	100%										

Delivered Lumens: 2002
Luminaire Watts: 22.35
LER: 89.57

CP at 0deg (Nadir): 2804
CRI: 80+

Beam Angle: 49.15
Spacing Ratio: 0.89

Lumen Multiplier: 8L x 0.323, 10L x 0.517, 15L x 0.676
27K x 0.919, 30K x 0.977, 40K x 1.005, 27HK x 0.924,
30HK x 0.963, 35HK x 1.0, 40HK 1.021

2AL2035KS202SQAMW-MAX - Adjustable

CANDLEPOWER CURVE TEST SP-R1759	INTENSITY	ZONAL LUMENS	INITIAL FC ON VERTICAL PLANE 30° aiming angle								INITIAL FC ON HORIZONTAL PLANE 30° aiming angle																									
			A	B	C	1	2	3	W	L1	L2	A	B	C	1	2	3	W	L1	L2																
	CP at 0°	0° - 10°	19	1%																																
		0° - 20°	168	10%																																
		0° - 30°	691	41%																																
		0° - 40°	1335	80%																																
		0° - 60°	1618	97%																																
		0° - 80°	1660	100%																																
	0°	0° - 90°	1666	100%																	Dimensions W, L1 and L2 based on beam angle								Dimensions W, L1 and L2 based on beam angle							
		90°	5																																	

Delivered Lumens: 1666
Luminaire Watts: 22.52
Efficacy: 73.98

CP at 0° (Nadir): 105
CRI: 80+

Beam Angle: 20°

Lumen Multiplier: 8L x 0.29, 10L x 0.494, 15L x 0.592
27K x 0.919, 30K x 0.977, 40K x 1.005, 27HK x 0.924,
30HK x 0.963, 35HK x 1.0, 40HK 1.021

2AL2035KM302SQAMW-MAX - Adjustable

CANDLEPOWER CURVE TEST SP-R1761	INTENSITY	ZONAL LUMENS	INITIAL FC ON VERTICAL PLANE 30° aiming angle								INITIAL FC ON HORIZONTAL PLANE 30° aiming angle																									
			A	B	C	1	2	3	W	L1	L2	A	B	C	1	2	3	W	L1	L2																
	CP at 0°	0° - 10°	55	3%																																
		0° - 20°	319	19%																																
		0° - 30°	838	51%																																
		0° - 40°	1354	82%																																
		0° - 60°	1611	97%																																
		0° - 80°	1648	100%																																
	0°	0° - 90°	1653	100%																	Dimensions W, L1 and L2 based on beam angle								Dimensions W, L1 and L2 based on beam angle							
		90°	3																																	

Delivered Lumens: 1653
Luminaire Watts: 22.57
Efficacy: 73.24

CP at 0° (Nadir): 380
CRI: 80+

Beam Angle: 27°

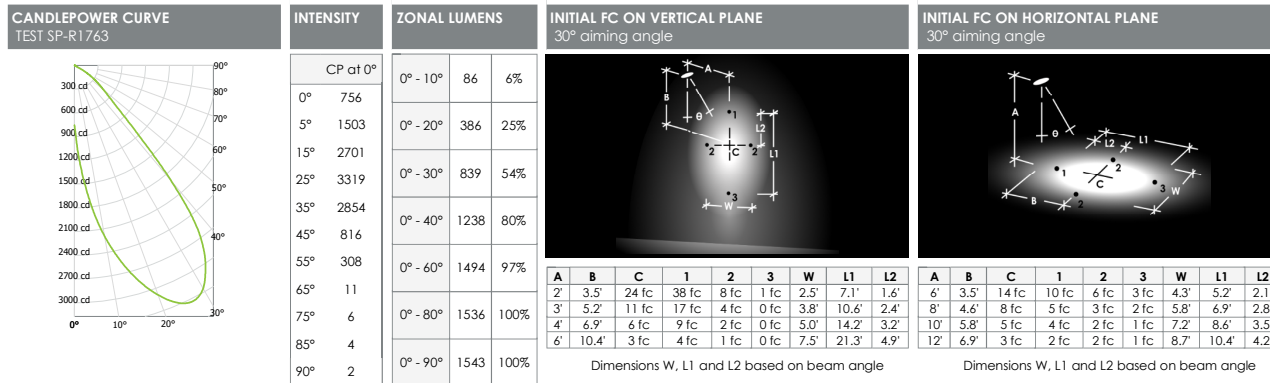
CCT Multiplier: 27K x 0.919, 30K x 0.977, 40K x 1.005, 27HK x 0.924,
30HK x 0.963, 35HK x 1.0, 40HK 1.021

DUO 2" SQUARE INACCESSIBLE CEILINGS



Spectrum Lighting

2AL2035KW402SQAMW-MAX - Adjustable



A	B	C	1	2	3	W	L1	L2
2'	3.5'	24 fc	38 fc	8 fc	1 fc	2.5'	7.1'	1.6'
3'	5.2'	11 fc	17 fc	4 fc	0 fc	3.8'	10.6'	2.4'
4'	6.9'	6 fc	9 fc	2 fc	0 fc	5.0'	14.2'	3.2'
6'	10.4'	3 fc	4 fc	1 fc	0 fc	7.5'	21.3'	4.9'

A	B	C	1	2	3	W	L1	L2
6'	3.5'	14 fc	10 fc	6 fc	3 fc	4.3'	5.2'	2.1'
8'	4.6'	8 fc	5 fc	3 fc	2 fc	5.8'	6.9'	2.8'
10'	5.8'	5 fc	4 fc	2 fc	1 fc	7.2'	8.6'	3.5'
12'	6.9'	3 fc	2 fc	2 fc	1 fc	8.7'	10.4'	4.2'

Dimensions W, L1 and L2 based on beam angle

Dimensions W, L1 and L2 based on beam angle

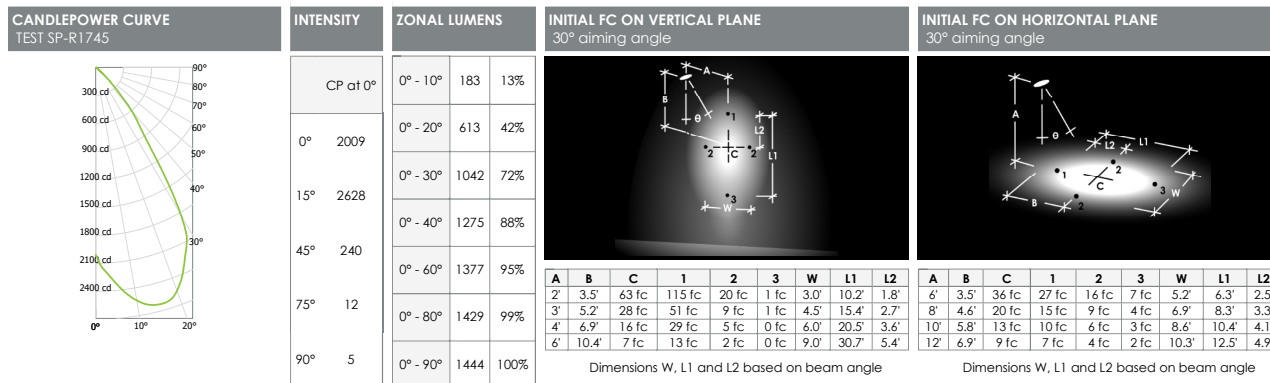
Delivered Lumens: 1543
Luminaire Watts: 22.58
Efficacy: 68.33

CP at 0° (Nadir): 756
CRI: 80+

Beam Angle: 35°

Lumen Multiplier: 8L x 0.29, 10L x 0.494, 15L x 0.592
CCT Multiplier: 27K x 0.919, 30K x 0.977, 40K x 1.005, 27HK x 0.924, 30HK x 0.963, 35HK x 1.0, 40HK 1.021

2AL2035KXW552SQAMW-MAX - Adjustable



A	B	C	1	2	3	W	L1	L2
2'	3.5'	43 fc	115 fc	20 fc	1 fc	3.0'	10.2'	1.8'
3'	5.2'	28 fc	51 fc	9 fc	1 fc	4.5'	15.4'	2.7'
4'	6.9'	16 fc	29 fc	5 fc	0 fc	6.0'	20.5'	3.6'
6'	10.4'	7 fc	13 fc	2 fc	0 fc	9.0'	30.7'	5.4'

A	B	C	1	2	3	W	L1	L2
6'	3.5'	36 fc	27 fc	14 fc	7 fc	5.2'	6.3'	2.5'
8'	4.6'	20 fc	15 fc	9 fc	4 fc	6.9'	8.3'	3.3'
10'	5.8'	13 fc	10 fc	6 fc	3 fc	8.6'	10.4'	4.1'
12'	6.9'	9 fc	7 fc	4 fc	2 fc	10.3'	12.5'	4.9'

Dimensions W, L1 and L2 based on beam angle

Dimensions W, L1 and L2 based on beam angle

Delivered Lumens: 1444
Luminaire Watts: 22.52
Efficacy: 64.12

CP at 0° (Nadir): 2009
CRI: 80+

Beam Angle: 41°

Lumen Multiplier: 8L x 0.29, 10L x 0.494, 15L x 0.592
CCT Multiplier: 27K x 0.919, 30K x 0.977, 40K x 1.005, 27HK x 0.924, 30HK x 0.963, 35HK x 1.0, 40HK 1.021

DUO 2" SQUARE

INACCESSIBLE CEILINGS

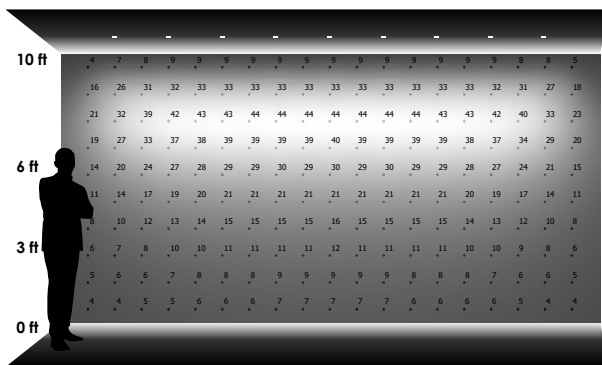


Spectrum Lighting

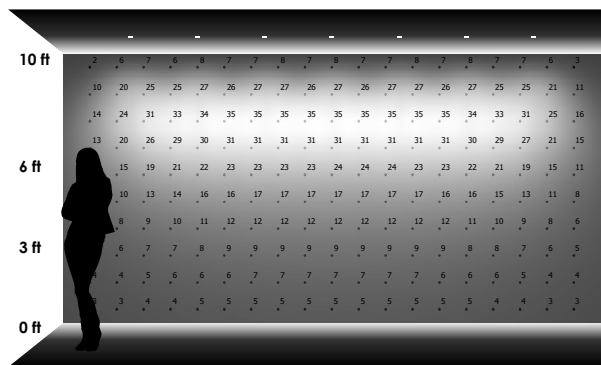
2DL2035KW2SQLW6MW - Wall Wash

CANDLEPOWER CURVE TEST SP-R962	PERFORMANCE SUMMARY	REFERENCE DIAGRAM
	<p>Delivered Lumens: 1161</p> <p>Luminaire Watts: 22.45</p> <p>LER: 51.71</p> <p>CP at 0deg (Nadir): 451</p> <p>CRI: 80+</p> <p>CCT Multiplier: 27K x 0.919, 30K x 0.977, 40K x 1.005, 27HK x 0.924, 30HK x 0.963, 35HK x 1.0, 40HK 1.021</p>	

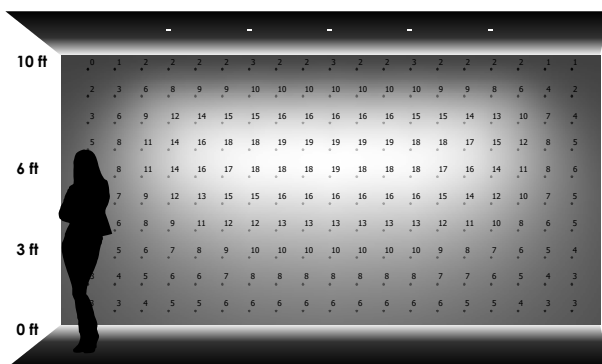
PERFORMANCE DATA - INITIAL ILLUMINATION (FOOTCANDLES) ON WALL - DIRECT LIGHT ONLY



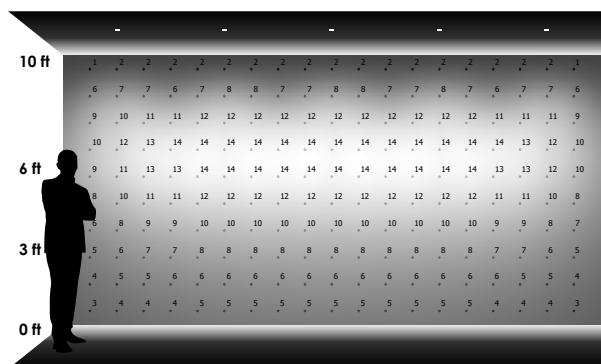
9 LUMINAIRES
2' - 0" away from wall
2' - 0" between luminaires



7 LUMINAIRES
2' - 6" away from wall
2' - 6" between luminaires



5 LUMINAIRES
3' - 0" away from wall
3' - 0" between luminaires



5 LUMINAIRES
3' - 0" away from wall
4' - 0" between luminaires