



PROJECT: _____
 QUANTITY: _____ TYPE: _____

6" MODULAR ACCENT LIGHT

SUSPENDED / SURFACE

LED SERIES / MULTI-MODULE / 4 × 3000 LUMENS / 3" DIAMETER MODULES



SC6-PC

APPLICATION

SC 6" series modular fixture for suspended/surface accent lighting.

FEATURES

Surface mounted modular accent fixture. Fixture available with 1-4 modules and choice of 4 beam distributions. Fixture modules rotate 359°, lock and tilt to 20° with 1" pull-down for optimal aiming. Front loading lamp bezel accepts up to two lens/louver options.

FINISH

A variety of architectural powder-coat finishes for interior and exterior of fixture are available.

ELECTRONICS

LED system features state of the art, high efficiency LEDs providing consistent stable color with excellent CCT control over the life of the light engine. Base 80 min CRI with 3-step MacAdam ellipse binning. High CRI of 90 min is also available as a standard option. A variety of electronic 120/277V and dimming options are available.

CONSTRUCTION

Housing formed of #18 gauge 5052-H32 aluminum, seam welded and finished to specification. Fixture modules die-cast and machined aluminum.

CODE COMPLIANCE

BAA Compliant. Non-IC rated. ETL certified to meet US and Canadian standards. Suitable for dry or damp locations. Manufactured and tested to UL standards No. 1598/8750.

SERIES	LUMENS ¹	CCT	BEAM ²	DRIVER / VOLTAGE ³	OPTIONS ⁴	MOUNTING ⁶	INTERIOR	FINISHES
SC66PC 1 Module	10L 600 Lm	80 CRI	ND 19°	D1 1% 0-10V, 120V	LENS NL No Lens S034 Solite Diffusion GL34 Clear FG34 Frosted SK34 Linear HL35 Hex Louver SN34 ⁵ Snoot	2XHMxx ⁷ 2-Hang Straight Pendant (3/8 IPS) 2XPMxx ⁷ 2-Rigid Pendants (3/8 IPS) 4XCDxx ⁷ 4-Aircraft Cable, Straight Cord SM Surface Mount	MWI Matte White Interior MBI Matte Black Interior PTI Platinum Silver Interior BZI Bronze Interior CCI Custom Color Interior	MW Matte White MB Matte Black PT Platinum BZ Bronze
	20L 1250 Lm	27K 2700K	MD 36°	D2 1% 0-10V, 277V				
SC612PC 2 Modules	30L 2000 Lm	30K 3000K	WD 43°		EMRM Emergency Battery			
		35K 3500K	XW 62°					
SC618PC 3 Modules		40K 4000K						
SC624PC 4 Modules		90 CRI						
	1. Nominal Source Lumens at 35K	27HK 2700K 30HK 3000K 35HK 3500K 40HK 4000K	2. Beam angles represent one module	3. Contact Factory for Additional Options	4. See Product Page for Details - Front Loading Lamp Bezel Accepts Up to Two Lens/Louver Options 5. Snoot is Always Flat Black	6. Suspension Points with Power 7. Specify in inches: See Mounting Page for Available Lengths	Reference Color Sheet Located on Product Webpage For Full List of Available Colors.	Reference Color Sheet Located on Product Webpage For Full List of Available Colors.

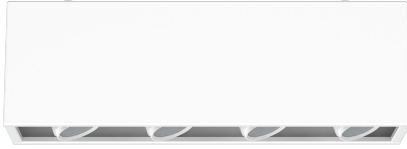
EXAMPLE: SC6PC10L30KNDD1S034SMPTIPT



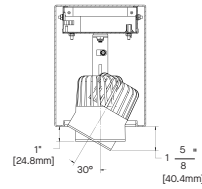
6" MODULAR ACCENT LIGHT



FIXTURE DIMENSIONS



SIDE VIEW WITH PULL DOWN

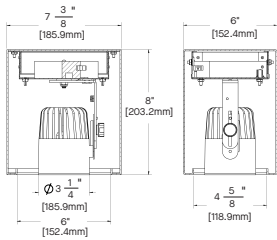


LUMENS / WATTAGE DATA

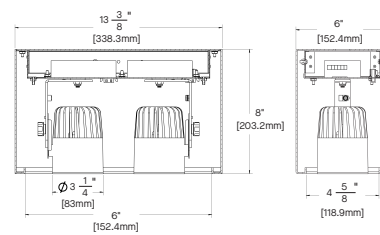
PART NUMBER	SOURCE LUMENS ¹	DELIVERED LUMENS ²	SYSTEM WATTS	LPW
SC6_PC10L	1000	598	8.3	72
SC6_PC20L	2000	1251	17.1	73
SC6_PC30L	3000	1955	22	89

¹ Nominal Source Lumens at 35K ² Nominal Delivered Lumens at 82 CRI with PC40L 35K MD XX NL

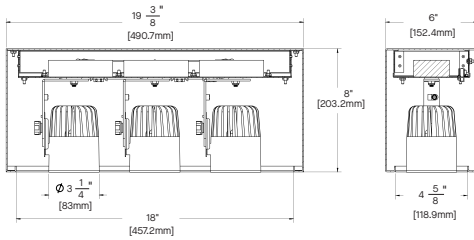
SC66 - 1 LED MODULE



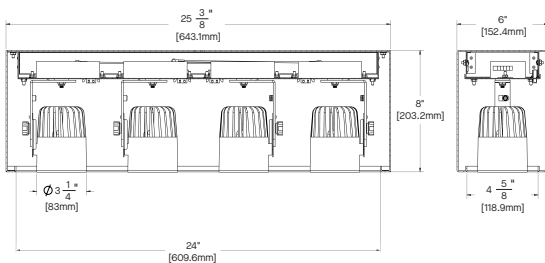
SC612 - 2 LED MODULES



SC618 - 3 LED MODULES



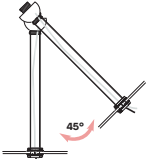
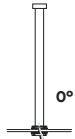
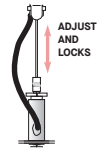

SC624 - 4 LED MODULES



6" MODULAR ACCENT LIGHT



CEILING MOUNTING

<p>HM* HANG STRAIGHT 45° SWIVEL 1/2" STEM - 3/8" NPT</p>  <p>ORDER: HM (Length) SPECIFY LENGTH: HM3 - 3" HM24 - 24" HM6 - 6" HM36 - 36" HM12 - 12" HM48 - 48" HM18 - 18" HM72 - 72" HMLC(XX) Custom Length (Specify in Inches)</p>	<p>PM* RIGID PENDANT MOUNT RIGID 1/2" STEM - 3/8" NPT</p>  <p>ORDER: PM (Length) SPECIFY LENGTH: PM3 - 3" PM24 - 24" PM6 - 6" PM36 - 36" PM12 - 12" PM48 - 48" PM18 - 18" PM72 - 72" PMLLC(XX) Custom Length (Specify in Inches)</p>	<p>CD CORD / CABLE MOUNT SJ CORD WITH 1/16 SS CABLE</p>  <p>ORDER: CD (Length) SPECIFY LENGTH: CD36 - 36" CD72 - 72" CD144 - 144" CDLC(XX) Custom Length (Specify in Inches)</p>	<p>SM SURFACE MOUNT FIXTURE HOUSING MOUNTS DIRECTLY TO J-BOX AND/OR CEILING</p> 
--	--	---	--

***MAXIMUM ONE PIECE STEM LENGTH IS 72". **MAXIMUM ONE PIECE STEM LENGTH IS 36". LONGER LENGTHS ARE POSSIBLE USING MULTIPLE STEMS AND COUPLERS.
**ORDER IN 12" INCREMENTS, ODD SIZES MAY BE FIELD CUT

PRELIMINARY

6" MODULAR ACCENT LIGHT



Photometric data shown represents a single module. For multi-module fixtures, use one IES file per module to ensure accurate lighting calculations.

SC6xx-PC 30L 35K ND xx xx NL

CANDLEPOWER CURVE TEST SP-00596_21	INTENSITY CANDELA 0° AZIMUTH	ZONAL LUMENS	SINGLE UNIT: PERFORMANCE HORIZONTAL FOOTCANDLES INITIAL DOWNLIGHT ONLY				MULTIPLE UNITS: PERFORMANCE 80/50/20% REFLECTANCES HORIZONTAL FOOTCANDLES AND WATTS/SQ FT					
			Mounting Distance	FC at Beam Center	Diameter at Beam Angle	FC at Beam Edge	Ceiling Height	Fixture Spacing	RCR 1		RCR 3	
	0°	0° - 10° 631 28%	8'	143 fc	3.0'	68 fc	18'	4'	152	1.87	138	1.87
	0° 9128	0° - 20° 1397 62%	10'	91 fc	3.7'	43 fc	22'	5'	99	1.21	85	1.15
	5° 7730	0° - 30° 1927 85%	12'	63 fc	4.5'	30 fc	26'	6'	67	0.82	57	0.78
	15° 2645	0° - 40° 2225 98%	14'	47 fc	5.2'	22 fc	Delivered Illuminance Rating: (DIR)		82 FC per W/Sq. Ft.		74 FC per W/Sq. Ft.	
	25° 1088	0° - 60° 2252 100%	16'	36 fc	6.0'	17 fc	1' Suspension Length to luminous aperture Square rooms used for multiple units: RCR 1: Length & Width = Ceiling Ht. - 3.5' x 10.00 RCR 3: Length & Width = Ceiling Ht. - 3.5' x 3.33 * Average Initial Footcandles at 2.5' Above Floor					
	35° 480	0° - 80° 2259 100%	20'	23 fc	7.5'	11 fc						
	45° 15	0° - 90° 2261 100%	24'	16 fc	9.0'	8 fc						
	55° 4	90° 0	Total	28'	12 fc	10.4'						
	Delivered Lumens: 2261 Luminaire Watts: 30.3 LER: 74.62	CP at 0° (Nadir): 9128	CRI: 80+	Beam Angle: 21° Spacing Ratio: 0.35	Lumen Multiplier: 20L x 0.47, 30L x 0.73 CCT Multiplier: 27K x 0.96, 30K x 0.99, 40K x 1.04							

SC6xx-PC 30L 35K MD xx xx NL

CANDLEPOWER CURVE TEST SP-00596_15	INTENSITY CANDELA 0° AZIMUTH	ZONAL LUMENS	SINGLE UNIT: PERFORMANCE HORIZONTAL FOOTCANDLES INITIAL DOWNLIGHT ONLY				MULTIPLE UNITS: PERFORMANCE 80/50/20% REFLECTANCES HORIZONTAL FOOTCANDLES AND WATTS/SQ FT					
			Mounting Distance	FC at Beam Center	Diameter at Beam Angle	FC at Beam Edge	Ceiling Height	Fixture Spacing	RCR 1		RCR 3	
	0°	0° - 10° 523 27%	8'	100 fc	3.9'	46 fc	18'	6'	58	0.60	53	0.60
	0° 6369	0° - 20° 1289 66%	10'	64 fc	4.9'	29 fc	22'	7'	42	0.43	41	0.47
	5° 5918	0° - 30° 1731 89%	12'	44 fc	5.9'	20 fc	26'	8'	33	0.34	28	0.32
	15° 2731	0° - 40° 1845 94%	14'	32 fc	6.9'	15 fc	Delivered Illuminance Rating: (DIR)		97 FC per W/Sq. Ft.		87 FC per W/Sq. Ft.	
	25° 988	0° - 60° 1895 97%	16'	25 fc	7.9'	11 fc	1' Suspension Length to luminous aperture Square rooms used for multiple units: RCR 1: Length & Width = Ceiling Ht. - 3.5' x 10.00 RCR 3: Length & Width = Ceiling Ht. - 3.5' x 3.33 * Average Initial Footcandles at 2.5' Above Floor					
	35° 180	0° - 80° 1949 100%	20'	16 fc	9.9'	7 fc						
	45° 37	0° - 90° 1955 100%	24'	11 fc	11.8'	5 fc						
	55° 27	90° 1	Total	28'	8 fc	13.8'						
	Delivered Lumens: 1955 Luminaire Watts: 22 LER: 88.86	CP at 0° (Nadir): 6369	CRI: 80+	Beam Angle: 28° Spacing Ratio: 0.46	Lumen Multiplier: 20L x 0.47, 30L x 0.73 CCT Multiplier: 27K x 0.96, 30K x 0.99, 40K x 1.04							

HOW TO USE PERFORMANCE DATA

SINGLE UNIT	MULTIPLE UNITS
<p>Cone of Light of a single, symmetrical beam luminaire. Direct initial illumination (FC) and Beam Angle diameter directly beneath fixture; shown at different distances from aperture to horizontal plane. Calculated using Inverse Square Law.</p> $FC_H = CP \times (\cos \theta) \div D^2$ <p>Beam Diam. = 1/2 Beam Angle (Tan) x 2D</p> <ul style="list-style-type: none"> CP Candela at 0° (Nadir) cos θ Cosine of θ Angle D Distance (Mounting Height AFF) FC_H Footcandles, Horizontal Beam Angle Cone of light to 50% max. CP Beam Diam. Pattern of light at Beam Angle 	<p>Square grid layout of multiple luminaires in unfurnished, square rooms of different proportions (Room Cavity Ratios) with 80/50/20% room surface reflectances. 2' Suspension Length to aperture. Initial illumination (FC) calculated at 2.5' above floor, using Zonal Cavity Method. W/Sq. Ft. of layout shown for each ceiling height and RCR.</p> <p>Delivered Illuminance Rating (DIR*): System performance indicator expressed as ratio of approximate initial FC per W/Sq. Ft. delivered to horizontal plane below, for the range of ceiling heights indicated.</p> <ul style="list-style-type: none"> To estimate FC for Fixture Spacing that is different than shown (do not exceed Spacing Ratio): $FC = \text{Chart Spacing}^2 \div \text{Different Spacing}^2 \times \text{Chart FC}$ To estimate Sq. Ft. per fixture for a specific target FC: $\text{Sq. Ft.} / \text{Fixture} = \text{Chart FC} \times \text{Chart Spacing}^2 \div \text{Target FC}$ To estimate Fixture Quantity in a room: Fixture Qty. = Sq. Ft. of Rm. ÷ Sq. Ft. per fixture To estimate Watts/Sq. Ft.: W/ Sq. Ft. = Luminaire Watts x Qty. ÷ Sq. Ft. of Rm.

6" MODULAR ACCENT LIGHT



SC6xx-PC 30L 35K WD xx xx NL

CANDLEPOWER CURVE TEST SP-00596_16	INTENSITY CANDELA 0° AZIMUTH	ZONAL LUMENS	SINGLE UNIT: PERFORMANCE HORIZONTAL FOOTCANDLES INITIAL DOWNLIGHT ONLY				MULTIPLE UNITS: PERFORMANCE 80/50/20% REFLECTANCES HORIZONTAL FOOTCANDLES AND WATTS/SQ FT					
			Mounting Distance	FC at Beam Center	Diameter at Beam Angle	FC at Beam Edge	Ceiling Height	Fixture Spacing	RCR 1		RCR 3	
	0°	0° - 10° 410 20%	8'	73 fc	5.4'	31 fc	14'	6'	57	0.58	57	0.65
	0° 4668	0° - 20° 1215 60%	10'	47 fc	6.7'	20 fc	18'	8'	34	0.34	30	0.34
	5° 4489	0° - 30° 1771 88%	12'	32 fc	8.1'	14 fc	22'	10'	21	0.21	18	0.21
	15° 3014	0° - 40° 1897 94%	14'	24 fc	9.4'	10 fc	Delivered Illuminance Rating: (DIR)					
	25° 1251	0° - 60° 1953 97%	16'	18 fc	10.8'	8 fc	99 FC per W/Sq. Ft. 89 FC per W/Sq. Ft.					
	35° 200	0° - 80° 2002 100%	20'	12 fc	13.5'	5 fc	1' Suspension Length to luminous aperture Square rooms used for multiple units: RCR 1: Length & Width = Ceiling Ht. - 3.5' x 10.00 RCR 3: Length & Width = Ceiling Ht. - 3.5' x 3.33 * Average Initial Footcandles at 2.5' Above Floor					
	45° 39	0° - 90° 2008 100%	24'	8 fc	16.2'	3 fc						
	55° 30	90° 1	28'	6 fc	18.9'	3 fc						
	90° 1	Total 2008 100%										

Delivered Lumens: 2008
Luminaire Watts: 22
LER: 91.27

CP at 0° (Nadir): 4668
CRI: 80+

Beam Angle: 37°
Spacing Ratio: 0.60

Lumen Multiplier: 20L x 0.47, 30L x 0.73
CCT Multiplier: 27K x 0.96, 30K x 0.99, 40K x 1.04

SC6xx-PC 30L 35K XW xx xx NL

CANDLEPOWER CURVE TEST SP-00596_23	INTENSITY CANDELA 0° AZIMUTH	ZONAL LUMENS	SINGLE UNIT: PERFORMANCE HORIZONTAL FOOTCANDLES INITIAL DOWNLIGHT ONLY				MULTIPLE UNITS: PERFORMANCE 80/50/20% REFLECTANCES HORIZONTAL FOOTCANDLES AND WATTS/SQ FT					
			Mounting Distance	FC at Beam Center	Diameter at Beam Angle	FC at Beam Edge	Ceiling Height	Fixture Spacing	RCR 1		RCR 3	
	0°	0° - 10° 199 10%	8'	33 fc	9.8'	10 fc	14'	8'	34	0.46	25	0.40
	0° 2135	0° - 20° 710 35%	10'	21 fc	12.2'	7 fc	18'	10'	20	0.28	20	0.32
	5° 2075	0° - 30° 1379 68%	12'	15 fc	14.6'	5 fc	22'	12'	14	0.20	13	0.20
	15° 1789	0° - 40° 1836 90%	14'	11 fc	17.1'	3 fc	Delivered Illuminance Rating: (DIR)					
	25° 1456	0° - 60° 2016 99%	16'	8 fc	19.5'	3 fc	72 FC per W/Sq. Ft. 63 FC per W/Sq. Ft.					
	35° 737	0° - 80° 2034 100%	20'	5 fc	24.4'	2 fc	1' Suspension Length to luminous aperture Square rooms used for multiple units: RCR 1: Length & Width = Ceiling Ht. - 3.5' x 10.00 RCR 3: Length & Width = Ceiling Ht. - 3.5' x 3.33 * Average Initial Footcandles at 2.5' Above Floor					
	45° 161	0° - 90° 2036 100%	24'	4 fc	29.3'	1 fc						
	55° 59	90° 0	28'	3 fc	34.2'	1 fc						
	90° 0	Total 2036 100%										

Delivered Lumens: 2036
Luminaire Watts: 30.3
LER: 67.19

CP at 0° (Nadir): 2135
CRI: 80+

Beam Angle: 63°
Spacing Ratio: 0.94

Lumen Multiplier: 20L x 0.47, 30L x 0.73
CCT Multiplier: 27K x 0.96, 30K x 0.99, 40K x 1.04

HOW TO USE PERFORMANCE DATA

SINGLE UNIT	MULTIPLE UNITS
<p>Cone of Light of a single, symmetrical beam luminaire. Direct initial illumination (FC) and Beam Angle diameter directly beneath fixture; shown at different distances from aperture to horizontal plane. Calculated using Inverse Square Law.</p> $FC_H = CP \times (\cos \theta) \div D^2$ <p>Beam Diam. = 1/2 Beam Angle (Tan) x 2D</p> <ul style="list-style-type: none"> • CP Candela at 0° (Nadir) • Cos θ Cosine of θ Angle • D Distance (Mounting Height AFF) • FC_H Footcandles, Horizontal • Beam Angle Cone of light to 50% max. CP • Beam Diam. Pattern of light at Beam Angle 	<p>Square grid layout of multiple luminaires in unfurnished, square rooms of different proportions (Room Cavity Ratios) with 80/50/20% room surface reflectances. 2' Suspension Length to aperture. Initial average illumination (FC) calculated at 2.5' above floor, using Zonal Cavity Method. W/Sq. Ft. of layout shown for each ceiling height and RCR.</p> <p>Delivered Illuminance Rating (DIR*): System performance indicator expressed as ratio of approximate initial FC per W/Sq. Ft. delivered to horizontal plane below, for the range of ceiling heights indicated.</p> <ul style="list-style-type: none"> • To estimate FC for Fixture Spacing that is different than shown (do not exceed Spacing Ratio): $FC = \text{Chart Spacing}^2 \div \text{Different Spacing}^2 \times \text{Chart FC}$ • To estimate Sq. Ft. per fixture for a specific target FC: $\text{Sq. Ft.} / \text{Fixture} = \text{Chart FC} \times \text{Chart Spacing}^2 \div \text{Target FC}$ <ul style="list-style-type: none"> • To estimate Fixture Quantity in a room: Fixture Qty. = Sq. Ft. of Rm. ÷ Sq. Ft. per fixture • To estimate Watts/Sq. Ft.: W/ Sq. Ft. = Luminaire Watts x Qty. ÷ Sq. Ft. of Rm.