

INSTALLATION INSTRUCTIONS - 2LFK (NA) RECESSED LED LIGHTING
FIXTURES:
READ AND FOLLOW THESE INSTRUCTIONS BEFORE INSTALLING FIXTURE:

This fixture is intended for installation in accordance with the National Electrical Code and local regulations. To assure full compliance with local codes and regulations, check with your local electrical inspector before installation.

CAUTION: To avoid possible electric shock, be sure that power supply is turned off before installing or servicing this product. These fixtures are **not** designed for direct contact with insulation. Keep insulation at least 3 inches away from any fixture surface which will entrap heat. Maximum ambient temperature of fixture is 25°C (77°F). Use in higher temperatures will damage unit and void warranty.

Notice: Thermally protected fixture. Blinking light may indicate that insulation is too close to fixture. Suitable for use in damp locations.

Note: This fixture should be supported by main runners, or other structure that is capable of supporting the fixture weight.

Accessible/Inaccessible Ceiling frame installation:

1. Insert hanger bars provided into the fixture's hanger brackets using the proper cutouts in the hanger brackets. See **Fig 1**.
2. Insert upper collar mounting ring into the "up" position and secure into the spring clips on fixture frame. See **Fig 2**.
3. Place frame into position in the ceiling plenum and secure into place either with screws or other hardware suitable for the material of the structures being mounted to.
4. Loosen the bracket wing nuts from the inside of the fixture, and adjust the hanger brackets, so that the frame will be flush with the top of the ceiling material surface.
5. Carefully measure and record location of frame opening. A 3 1/8" hole saw will be required.

Fig 1

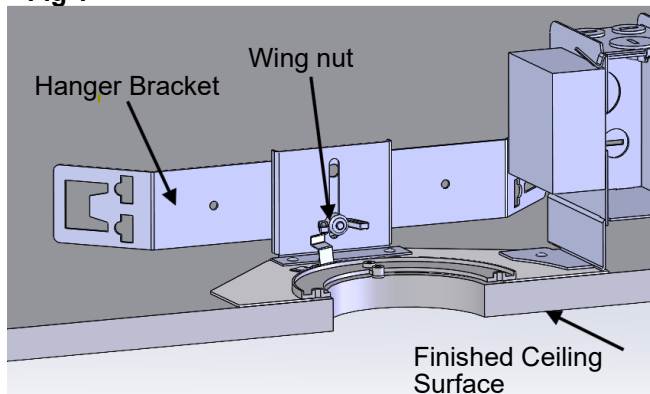
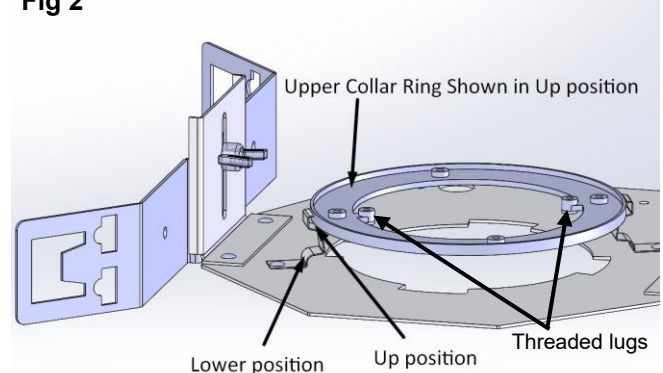


Fig 2



Wiring-Driver box attached to frame:

1. Remove Junction box cover. Remove appropriate knockouts. Route AC circuit into junction box ***. All AC supply connections must have a 90°C. minimum insulation rating. Connect AC wiring as follows:
Neutral input to **white input wire**, **120V, 277V, or 347V hot leg** to **black input wire**, and **green/copper wire** to **ground**.

*** **IMPORTANT NOTE:** If **DA, DD, or DX** dimming is specified, route **two additional wires** and connect suitable **0-10VDC** dimming control system to **violet** and **pink driver input wires**. **Otherwise**, leave these wires capped.

For fixtures with **DG** dimming, route **two additional wires** to suitable **Lutron ECO dimming control**, and connect to each of the **two violet driver input wires**.

2. Once wiring is complete, re-install junction box cover.

Wiring-Half Round Driver box:

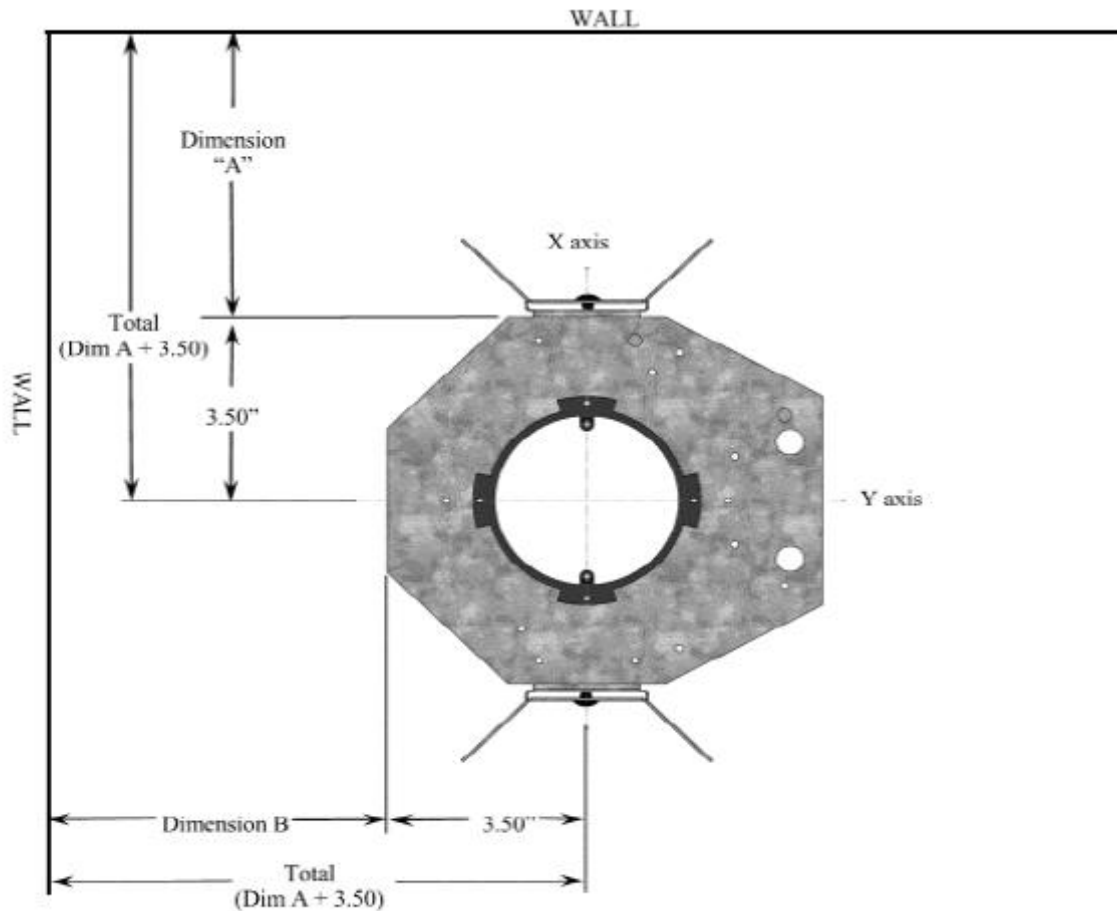
1. For Half Round driver box wire AC and dimming circuits as noted above and leave in the ceiling cavity for ease of installation of the module after ceiling installation. If required, route (2) 0-10V control wires into driver box through strain relief on opposite side of AC input connector. You must be able to pull the driver output wire out of the ceiling hole after ceiling installation. You must leave at least 12" of AC wire that can be pulled through ceiling hole with driver box afterwards.
2. If Half Round driver box is not present; or you will be tying into the AC circuit after ceiling installation you must leave enough of the AC circuit wiring loose in the ceiling cavity to be pulled back through the ceiling hole afterwards. Roughly 12" of AC wire should protrude from the hole afterwards to allow installation of the driver box.
3. For through branch wiring the use of a duplex connector is required.

Compatible Dimming Controls for 0-10V DIM products: Dimming controls that meet IEC Standard 60929 Annex E or ESTA Standard E1.3. are compatible. Consult factory for additional dimmer compatibility information.

Accessible/Inaccessible Ceiling frame installation:

1. Use the drawing below (**Fig 3**) as a reference to obtain necessary location dimensions to be used later after ceiling material is installed.
2. For each location dimension (dimension A and B) add 3.50" to the dimension and this will be the location center in the X and Y axis.
3. Record the total for each and retain that information for location prior to drilling the hole to install the Down Light Module.
4. Be aware that it may be necessary to add the thickness of the drywall to each dimension if measured from wall studs.

Fig 3



Proper hole saw cutting:

1. **IMPORTANT- A 3 3/16" (81mm) hole saw is required for proper installation. See Fig 4.**
2. Using the recorded fixture locations as mentioned in **Accessible/Inaccessible Ceiling frame installation.** Relocate fixture center on ceiling material to coincide with recorded dimensions.
3. It is suggested to mark the hole saw with masking tape at a distance down from the cutting edge of the hole saw equal to the ceiling material thickness for a visual reference.
4. Cut the hole using the proper method mentioned in the above items. Slow the hole saw blade RPM's as you approach the marked off line of the ceiling thickness. **DO NOT** cut ceiling material beyond 1/2" past the marking on the hole saw. Doing so may damage the upper ceiling ring.

Remodel installation: "For up to 3/4" ceiling material only"

1. **IMPORTANT- A 3 3/16" (81mm) hole saw is required for proper installation. See Fig 4.**
2. Install 3mm x 1 3/16 (30mm) screws through ceiling collar and into clamp wings ensuring anti rotation tab is facing towards ceiling collar. See **Fig 5.**
3. Rotate wings into center of ceiling collar and allow screws to drop down into cutout position. See **Fig 6.**
4. Insert ceiling collar into ceiling material.
5. Rotate ceiling collar into position. For wall wash products ensure large flange notch is oriented towards the wall to be washed with light. See **Fig 7.**
6. While keeping pressure on screw head in towards the ceiling, be sure wing passes above ceiling surface then rotates outwards into place. Be sure rotation tab contacts outer surface of collar. See **Fig 7.**
7. Tighten screws until wings clamp the ceiling material firmly being careful not to over tighten which may cause damage to ceiling material or damage to screw threads.

Accessible/Inaccessible Ceiling Collar installation:

1. After hole is properly drilled the upper collar ring must be moved to the lower position on the pan. See **Fig 1 and 2.**
2. Install (2) 3mm screws through ceiling collar and into threaded lugs on upper collar ring. There are 4 varying length screws provided for different ceiling thicknesses. Use 13/16" lg screws for 1/2" thick ceiling, 1" screws for 3/4" ceiling, 1 1/2" screws for 1" ceiling or 2" screws for 1 1/2" ceiling. See **Fig 1 and 2.**

Fig 4



Fig 5

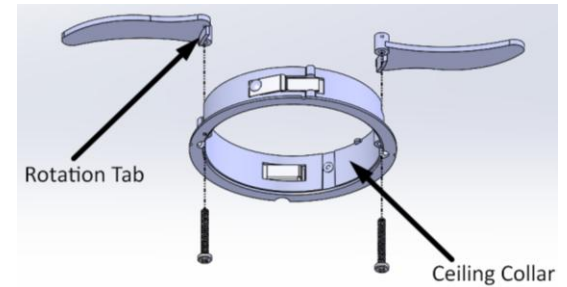


Fig 6

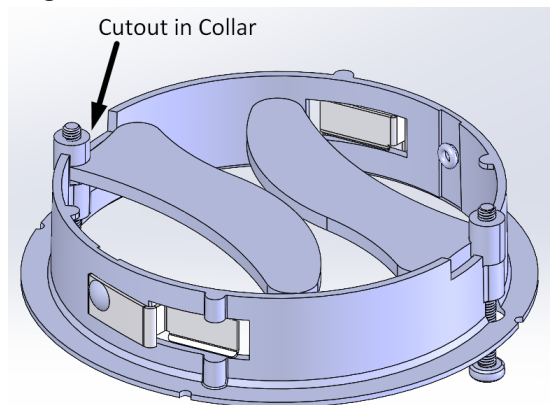
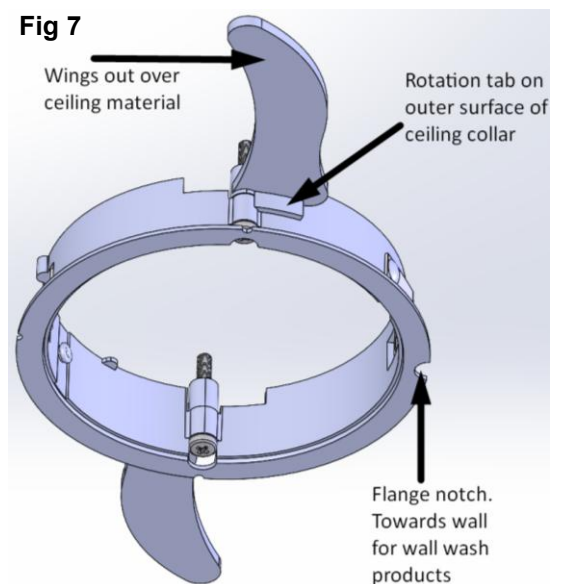


Fig 7



Flangeless installation:

1. Align key on mud ring to notch on ceiling collar and press into place. See **Fig 8**.
2. Mark location of (4) countersunk holes. See **Fig 9**.
3. Remove ring and carefully drill through ceiling material with a clearance bit for #6 screws (attention: do not drill through upper ceiling ring lugs. Doing so will strip the lugs and impede installation of mud ring, drill through ceiling material only).
4. Install mud ring with screws included or with a suitable length #6-32 flat head screw if thicker ceiling material is encountered. Make sure key and notch are properly aligned before tightening or mud ring will not sit flush with ceiling material. See **Fig 10**.
5. Carefully tighten to securely clamp mud ring to ceiling material and collar.
6. Apply joint compound as needed and sand to finish. Be sure to not apply joint compound to inner opening of mud ring to prevent damage or contamination of inner grooves that the trim will sit into.

Fig 8

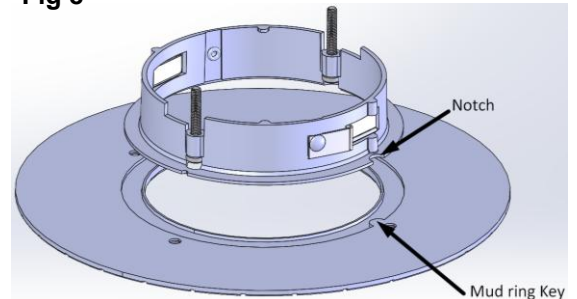


Fig 9

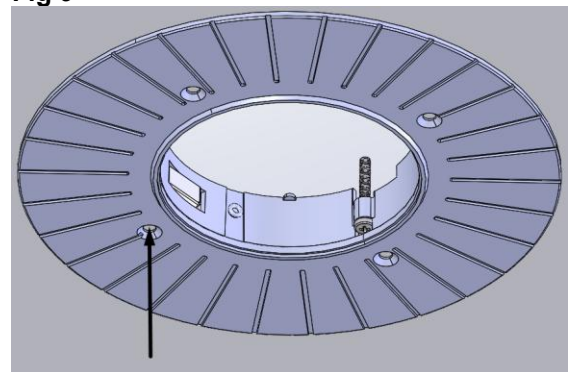


Fig 10

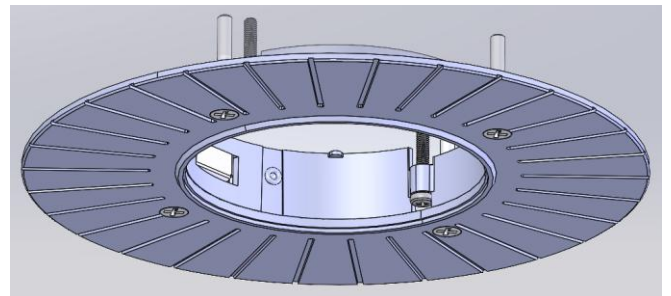
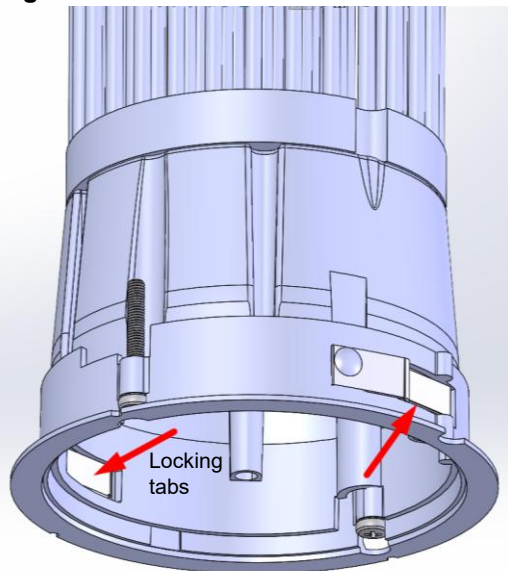


Fig 11



Downlight (wall wash) module installation:

1. Downlight: if round trim option is being used, align Ceiling collar lug to socket lugs indent and insert module firmly until it locks into place. See **Fig 12**.
2. Wall wash: if fixture is to be used as a wall wash, align socket lug indents while making sure key in module housing is on the large notch side of the socket. Insert module and press firmly into place until it locks into ceiling collar. See **Fig 12**.

Adjustable Module installation:

1. Align cutouts in rotation carriage to socket lugs of ceiling collar and press firmly into place until it locks. See **Fig 14**.

Lamp Adjustment:

1. Energize fixture and adjust lamp assembly with a Philips screwdriver to final tilt positions. Turn adjusting screw counterclockwise to tilt LED engine head back. Turn Adjusting screw clockwise to bring LED engine head to vertical position. See **Fig 13**.
2. Rotate Adjustable module by inserting Phillips screwdriver into crosshair pattern in casting and rotate entire module as required. See **Fig 13**.

Trim installation:

1. Wall wash and Downlight; align trim indents to socket lugs while making sure key in module housing is on the large notch side of the socket. Insert module and press firmly into place until it locks into socket. See **Fig 14**.

Removal of module:

1. Using either two fingertips or your thumbs, reach into aperture opening and press firmly on locking tabs simultaneously while drawing down on the module. Adjustable module may need to be slightly rotated to clear socket tabs while drawing down on module. See **Fig 11** on page 4.
2. Remove module from socket and pull-on driver output cable until connector comes out of the ceiling, disconnect connector by pressing on locking tab and drawing two mating parts apart. Module should now be free to remove from ceiling hole.

Fig 12

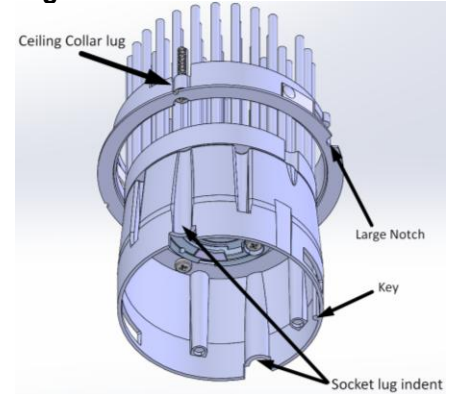


Fig 13

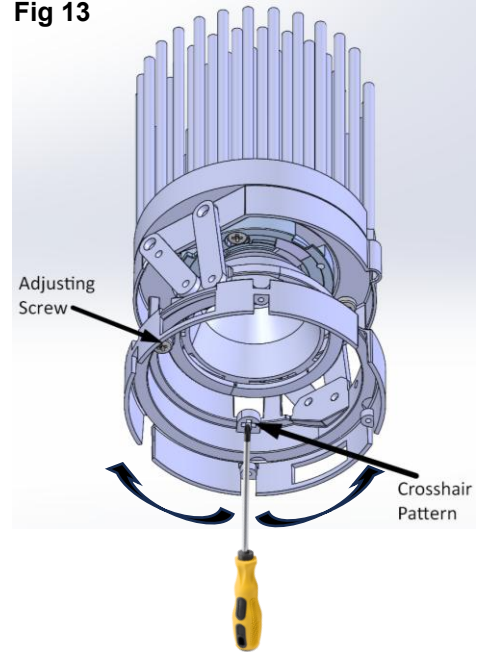


Fig 14

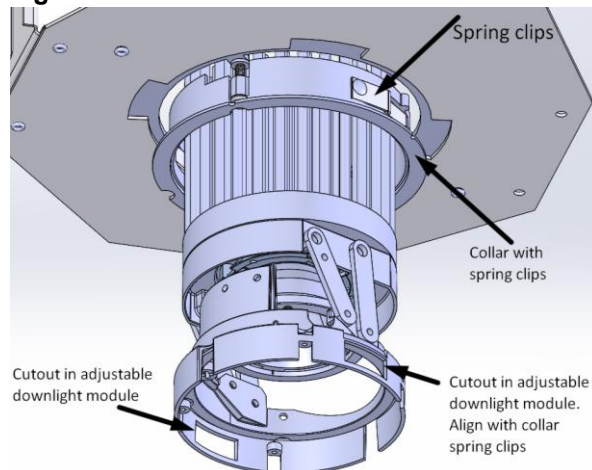
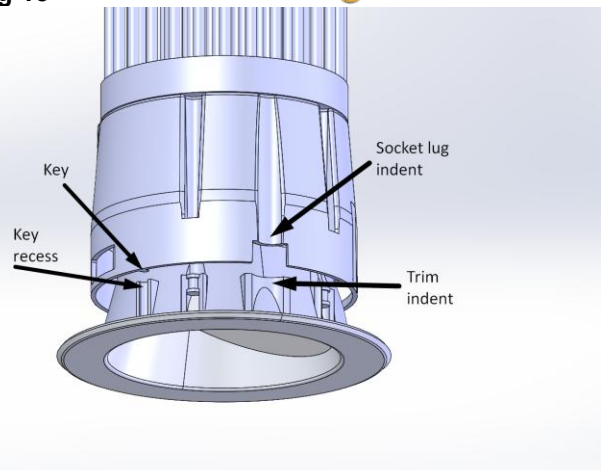


Fig 15



Installation and removal of Round Downlight Lens:

1. Align three tabs of lens with cutouts of twist-on optic and firmly push to snap in place. See **Fig 16**.
2. To remove lens, remove twist-on optic from LED holder. Push through opposite side of the optic to remove. See **Fig 17 and 18**.

Fig 16

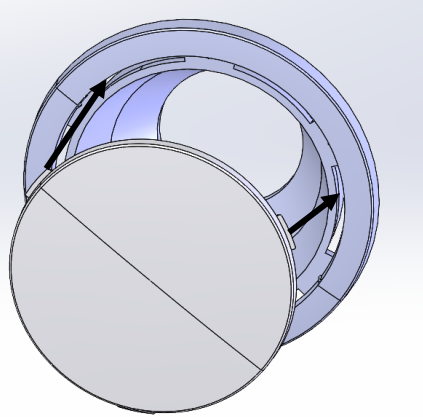


Fig 17

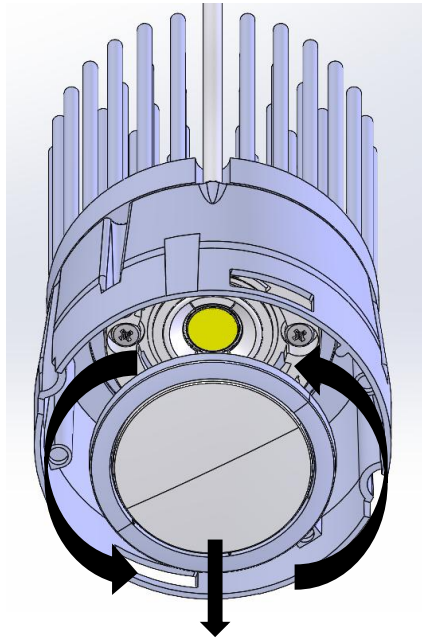
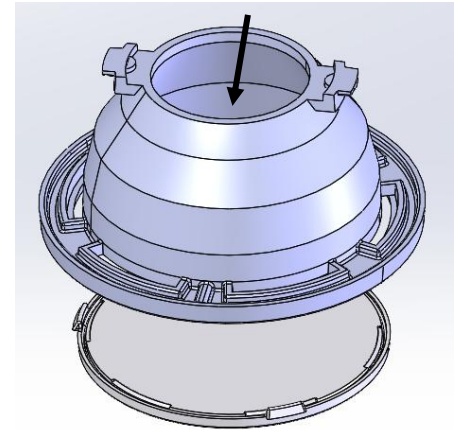


Fig 18



IMPORTANT NOTE: If unit fails to illuminate, disconnect AC circuit(s) immediately, and re-check wiring. Contact either the factory, or trained service personnel, for further assistance.

SAVE THESE INSTRUCTIONS