



12" / 16" CLASSIC LINE SURFACE LIGHT

GV SERIES / 3700 LUMENS MAX LED

speclume
decorative



SX1-05RDLEDGV

APPLICATION

Classic Line 12" and 16" diameter decorative surface light series.

FEATURES

Speclume series fixtures offer contemporary style with functional luminaire performance. Fixtures are designed and manufactured in our factory. No visible hardware. LED module and driver are upgradable and replaceable. Integral MW motion/photo sensor available. Circuit wiring available. Optional decorative center finial.

FINISH

Multi-stage polyester powder-coat process applied on our dedicated paint lines. See mounting and color pages for standard finishes.

ELECTRONICS

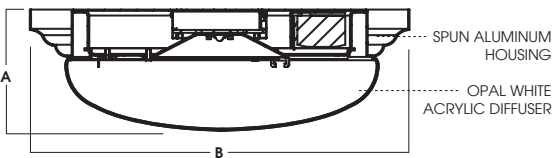
GV LED system features high brightness white Samsung LED's. 3 step MacAdam Ellipse binning. Standard CRI: 85+. Higher CRI, R9 and custom LED configurations are available; consult factory. Variety of electronic 120V/277V and dimming drivers.

CONSTRUCTION

Fixtures are spun in our factory from .063 high purity aluminum. Passive aluminum heatsink for optional thermal management. Formed UV stabilized opal white acrylic diffuser.

CODE COMPLIANCE

ARRA Compliant. ETL listed for damp locations. Manufactured and tested to UL standards No. 1598/8750.



SERIES	A	B
SX1205RDLEDGV	4.4	13.2
SX1605RDLEDGV	4.4	16.3

WATTAGE TO LUMENS UPDATE			
CURRENT PART NUMBER EXAMPLE	PREVIOUS PART NUMBER EXAMPLE	SOURCE LUMENS ¹	SYSTEM WATTS
SX1605RDLEDGV15L	SX1605RDLEDGV14W	1500	9
SX1605RDLEDGV27L	SX1605RDLEDGV26W	2700	16
SX1605RDLEDGV37L	SX1605RDLEDGV37W	3700	23



MW - Matte White



PA - Polished Aluminum



PB - Polished Brass

SERIES	LUMENS ¹	CCT	DRIVER / DIMMING ²	OPTIONS ³	MOUNTING ⁵	DIFFUSER	FINISH ⁷
SX1205RDLEDGV	15L	1500 Lm	EX Electronic Driver, 120V/277V DS10X 10% 0-10V Dimming, 120V/277V DO10X 1% 0-10V Dimming, 120V/277V DS2W1 2 Wire Phase Dimming, 120V DLTE1 Lutron 2 Wire Phase Dimming, 120V Only DL33X Lutron Hi Lume Dimming, 120V/277V DL3EX Lutron ECO System Dimming, 120V/277V	FS Fuse Holder and Fuse GS Ceiling Level Gasket USR Universal MW Motion/ Light Sensor TMB Thumb Screws 2C⁴ 2 Circuit	SM Surface Mount HM⁶ Hang Mount PM⁶ Pendant Mount	OP White Opal Acrylic POP White Opal Polycarbonate FIN Decorative Center Finial to Match Edge Finish	MW⁸ Matte White MB Matte Black PT Platinum PA Polished Aluminum PB Polished Brass TW Textured White TB Textured Black MT Textured Silver BZ Bronze OB Oil Rubbed Bronze CH Charcoal GH Graphite AC Champagne SN Sun Gold BR Breccia Rust AN Anodic Natural CO Copper Metallic CC Custom Color
	27L	2700 Lm					
	37L	3700 Lm					
SX1605RDLEDGV	15L	1500 Lm	EX Electronic Driver, 120V/277V DS10X 10% 0-10V Dimming, 120V/277V DO10X 1% 0-10V Dimming, 120V/277V DS2W1 2 Wire Phase Dimming, 120V DLTE1 Lutron 2 Wire Phase Dimming, 120V Only DL33X Lutron Hi Lume Dimming, 120V/277V DL3EX Lutron ECO System Dimming, 120V/277V	FS Fuse Holder and Fuse GS Ceiling Level Gasket USR Universal MW Motion/ Light Sensor TMB Thumb Screws 2C⁴ 2 Circuit	SM Surface Mount HM⁶ Hang Mount PM⁶ Pendant Mount	OP White Opal Acrylic POP White Opal Polycarbonate FIN Decorative Center Finial to Match Edge Finish	MW⁸ Matte White MB Matte Black PT Platinum PA Polished Aluminum PB Polished Brass TW Textured White TB Textured Black MT Textured Silver BZ Bronze OB Oil Rubbed Bronze CH Charcoal GH Graphite AC Champagne SN Sun Gold BR Breccia Rust AN Anodic Natural CO Copper Metallic CC Custom Color
	27L	2700 Lm					
	37L	3700 Lm					

EXAMPLE: SX1205RDLEDGV15L35KEXSMOPMW

NOTES:

1 Nominal Source Lumens At 3500K 2 Contact Factory for Additional Options 3 See Product Options for Details 4 Available for 27L / 37L Only
 5 See Mounting Page for Details on Components and Finishes 6 Specify Length in Inches: See Mounting Page for Available Lengths
 7 Contact Factory for Special Finishes 8 Standard Finishes

Dimensions and values shown are nominal. Spectrum Lighting continually works to improve products and reserves the right to make changes which may alter the performance or appearance of products.



PROJECT:	TYPE:
CAT. NO.:	





SOME OPTIONS NOT AVAILABLE ON ALL FIXTURES. CONSULT SPECIFICATION SHEETS. SEE INDIVIDUAL SPECIFICATION SHEETS OR CONSULT FACTORY FOR ADDITIONAL INFORMATION. NOTE: THIS IS TYPICAL OF SPECLUME SPECIFICATION FOR PENDANT MOUNTING. INDIVIDUAL FIXTURES OR PROJECTS MAY HAVE SPECIALIZED REQUIREMENTS.

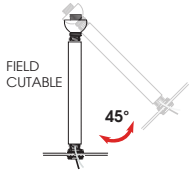
MOUNTING TYPES

HM*
HANG STRAIGHT
45° SWIVEL 1/2" STEM - 3/8" NPT

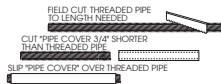


ORDER: **HM** (Length)
SPECIFY LENGTH:
HM3 - 3" **HM24** - 24"
HM6 - 6" **HM36** - 36"
HM12 - 12" **HM48** - 48"
HM18 - 18" **HM72** - 72"
HMLC(XX)
Custom Length
(Specify in Inches)

HMAT*
HANG STRAIGHT ALL THREAD
45° SWIVEL 1/2" STEM - 1/4" IP

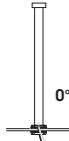


ORDER: **HMAT** (Length)
SPECIFY LENGTH:
HMAT12 - 12"
HMAT24 - 24"
HMAT36 - 36"
HMAT48 - 48"
HMAT72 - 72"
HMATLC(XX)
Custom Length
(Specify in Inches)



*MAXIMUM ONE PIECE STEM LENGTH IS 72". LONGER LENGTHS ARE POSSIBLE USING MULTIPLE STEMS AND COUPLERS.

PM*
RIGID PENDANT MOUNT
RIGID 1/2" STEM - 3/8" NPT



ORDER: **PM** (Length)
SPECIFY LENGTH:
PM3 - 3" **PM24** - 24"
PM6 - 6" **PM36** - 36"
PM12 - 12" **PM48** - 48"
PM18 - 18" **PM72** - 72"
PMLC(XX)
Custom Length
(Specify in Inches)

CD
CORD / CABLE MOUNT
SJ CORD WITH 1/16 SS CABLE



ORDER: **CD** (Length)
SPECIFY LENGTH:
CD36 - 36"
CD72 - 72"
CD144 - 144"
CDLC(XX)
Custom Length
(Specify in Inches)

CM
CORD MOUNT
SJ CORD STRAIN RELIEF



ORDER: **CM** (Length)
SPECIFY LENGTH:
CM36 - 36"
CM72 - 72"
CM144 - 144"
CMLC(XX)
Custom Length
(Specify in Inches)

CHN
CHAIN MOUNT
SJ CORD / DECORATIVE CHAIN



ORDER: **CHN** (Length)
SPECIFY LENGTH:
CHN36 - 36"
CHN72 - 72"
CHN144 - 144"
CHNLC(XX)
Custom Length
(Specify in Inches)

MOUNTING FINISH

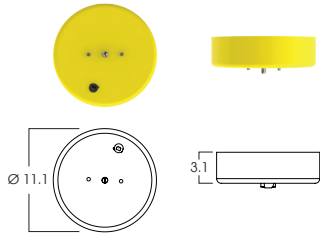
Standard Canopy / Stem or Cord mounting finish is matte white. Black fixtures receive matte black mounting finish, silver fixture receive silver mounting finish. Custom colors for canopy and stem are available upon request.

MOUNTING COMPONENTS FINISH

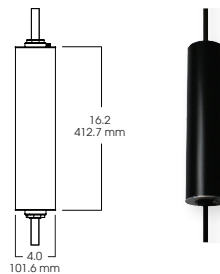
FIXTURE COLOR	CANOPY / STEM / CORD COLOR
Matte White, Textured White	Matte White
Matte Black, Textured Black, Bronze, Oil Rubbed Bronze	Matte Black
Platinum, Textured Silver, Silver	Silver
All Others	Matte White
Custom Color	Canopy / Stem Same Color as Fixture

EMERGENCY BATTERY OPTIONS

EMCP7W - LARGE DRIVER CANOPY FOR 7W EMERGENCY BATTERY (FOR ALL CEILING MOUNT TYPES)

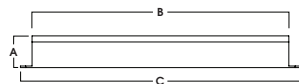


EMLN7W - 7W IN-LINE EMERGENCY BALLAST (FOR HM, HMAT, AND PM OPTIONS)



REMOTE EMERGENCY BATTERY OPTIONS

EMRM7W - REMOTE EMERGENCY BATTERY (UP TO 12W, 50' MAX)

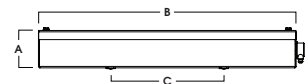


EM WATTAGE	A	B	C
EMRM5W	1.5	9.0	9.5
EMRM7W*	1.3	12.6	13.0
EMRM12W	1.3	12.8	13.3

*STANDARD

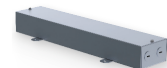


EMEN7W - REMOTE EMERGENCY BATTERY WITH ENCLOSURE (UP TO 12W, 50' MAX)



ENCLOSURE	A	B	C
EMEN5W	2.0	17.0	6.2
EMEN7W*	2.0	17.0	6.2
EMEN12W	2.0	17.0	6.2

*STANDARD



Dimensions shown are nominal. Spectrum Lighting is continually improving products and reserves the right to make changes that will not alter performance or appearance with or without written notice.

PROJECT:	TYPE:
CAT. NO.:	