

ACRYLIC	A	B	C	D	E	F
CY4	2.5	9.0	5.0	4.0	5.25	4.0
CY6	2.5	11.0	5.0	6.0	5.25	4.0
CY8	2.5	13.0	5.0	8.0	5.25	4.0

SERIES	LUMENS <sup>1</sup>	CCT	DRIVER / DIMMING <sup>3</sup>	COLOR	CAST ACRYLIC <sup>6</sup>	MOUNTING <sup>7</sup>	FINISH	
CY0405DXT	10L 13L	1000 Lm 1300 Lm	83 CRI	EX Electronic Driver, 120V/277V	FA <sup>5</sup> Frosted Clear CB Cobalt Blue RD Bright Red EG Emerald Green AM Amber Orange	CY4 4" Deep Acrylic CY6 6" Deep Acrylic CY8 8" Deep Acrylic	RDC5 <sup>8</sup> Small Driver Canopy	
							CP13 <sup>4</sup> Large Driver Canopy	
				DS10X 10%, 0-10V, 120V/277V				MW <sup>10</sup> Matte White
				DO10X 1%, 0-10V, 120V/277V			CD <sup>9</sup> Cord / Cable Mount	MB <sup>10</sup> Matte Black
				DS2W1 1%, ELV/MLV 120V			HM <sup>9</sup> Hang Straight	PT <sup>10</sup> Platinum Silver
				DLTE1 <sup>4</sup> 1%, Lutron® ELV/MLV, 120V			HMAT <sup>9</sup> Hang Straight All Thread	TW Textured White
				DL3EX <sup>4</sup> 1%, Lutron® EcoSystem®, 120V/277V			PM <sup>9</sup> Rigid Pendant Mount	TB Textured Black
							EMERGENCY BATTERY OPTIONS	MT Textured Silver
							EMCP7W 7W Canopy Mounted EM	BZ Bronze
							EMRM7W 7W Remote EM	OB Oil Rubbed Bronze
						EMEN7W 7W Remote with Enclosure	CH Charcoal	
						EMLN7W 7W In-Line EM (For Pendants)	GH Graphite	
							AC Champagne	
							SN Sun Gold	
							BR Breccia Rust	
							AN Anodic Natural	
							CO Copper Metallic	
							CC <sup>11</sup> Custom Color	

**EXAMPLE:** CY0405DXT10L30KEXFACY8/RDC5CD36BA

**NOTES:**  
 1 Nominal Source Lumens at Any CCT 2 Nominal Delivered Lumens at Any CCT 3 Contact Factory for Additional Options 4 CP13 Required 5 Standard 6 Custom Length Available Consult Factory  
 7 See Mounting Page for Details on Components and Finishes 8 Required for All Drivers Excluding Lutron Drivers 9 Specify Length in Inches; See Mounting Page for Available Lengths 10 Standard Finishes  
 11 See Color Page for More Options/Consult Factory for Special Finishes

Dimensions and values shown are nominal. Spectrum Lighting continually works to improve products and reserves the right to make changes which may alter the performance or appearance of products.



<b>PROJECT:</b>	<b>TYPE:</b>
<b>CAT. NO.:</b>	

WWW.SPECLIGHT.COM • 994 JEFFERSON STREET, FALL RIVER, MA 02721 • 508.678.2303 FAX 508.678.2260



# HOBOKEN PENDANT

## XT SERIES / 1300 LUMENS

### CY0405DXT

#### APPLICATION

Hoboken Pendant features a clean design for a variety of architectural area lighting applications.

#### FEATURES

Hoboken Series offers a variety of acrylic lengths so you can mix and match on job. All fixtures are designed and manufactured in our factory. Interchangeable LED module for ease of maintenance. Driver in canopy for thermal management. A variety of mounting and finishes options are available.

#### FINISH

Multi-stage polyester powder-coat process applied on our dedicated paint lines. A wide variety of standard and custom finishes are available. All exposed materials are chromate pretreated to resist corrosion.

#### ELECTRONICS

LED system features Xicato LED module with proprietary phosphor technology that provides consistent stable color with CCT control of +/- 100K over life of the light engine. Base CRI is 83 with 1 x 2-step MacAdam Ellipse binning. High CRI is 98 with 1 x 2-step MacAdam Ellipse binning. Variety of electronic 120V/277V and dimming drivers.

#### CONSTRUCTION

Fixtures constructed of spun, machined and formed aluminum and optical quality UV stabilized cast acrylic.

#### CODE COMPLIANCE

BAA Compliant. ETL certified to meet US and Canadian standards. Manufactured and tested to UL standard No. 1598/8750.

WATTAGE / LUMENS DATA				
PART NUMBER	SOURCE LUMENS <sup>1</sup>	DELIVERED LUMENS <sup>2</sup>	SYSTEM WATTS	LPW
CY0405DXT10L	1000	800	8	100
CY0405DXT13L	1300	1040	12	86.66



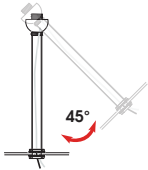


SOME OPTIONS NOT AVAILABLE ON ALL FIXTURES. CONSULT SPECIFICATION SHEETS. SEE INDIVIDUAL SPECIFICATION SHEETS OR CONSULT FACTORY FOR ADDITIONAL INFORMATION. NOTE: THIS IS TYPICAL OF SPECLUME SPECIFICATION FOR PENDANT MOUNTING. INDIVIDUAL FIXTURES OR PROJECTS MAY HAVE SPECIALIZED REQUIREMENTS.

### MOUNTING TYPES

#### HM\* HANG STRAIGHT

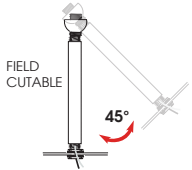
45° SWIVEL 1/2" STEM - 3/8" NPT



ORDER: **HM** (Length)  
SPECIFY LENGTH:  
**HM3** - 3"    **HM24** - 24"  
**HM6** - 6"    **HM36** - 36"  
**HM12** - 12"    **HM48** - 48"  
**HM18** - 18"    **HM72** - 72"  
**HMLC(XX)**  
Custom Length  
(Specify in Inches)

#### HMAT\* HANG STRAIGHT ALL THREAD

45° SWIVEL 1/2" STEM - 1/4" IP



ORDER: **HMAT** (Length)  
SPECIFY LENGTH:  
**HMAT12** - 12"  
**HMAT24** - 24"  
**HMAT36** - 36"  
**HMAT48** - 48"  
**HMAT72** - 72"  
**HMATLC(XX)**  
Custom Length  
(Specify in Inches)



#### PM\* RIGID PENDANT MOUNT

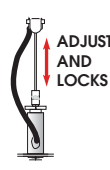
RIGID 1/2" STEM - 3/8" NPT



ORDER: **PM** (Length)  
SPECIFY LENGTH:  
**PM3** - 3"    **PM24** - 24"  
**PM6** - 6"    **PM36** - 36"  
**PM12** - 12"    **PM48** - 48"  
**PM18** - 18"    **PM72** - 72"  
**PMLC(XX)**  
Custom Length  
(Specify in Inches)

#### CD CORD / CABLE MOUNT

SJ CORD WITH 1/16 SS CABLE



ORDER: **CD** (Length)  
SPECIFY LENGTH:  
**CD36** - 36"  
**CD72** - 72"  
**CD144** - 144"  
**CDLC(XX)**  
Custom Length  
(Specify in Inches)

#### CM CORD MOUNT

SJ CORD STRAIN RELIEF



ORDER: **CM** (Length)  
SPECIFY LENGTH:  
**CM36** - 36"  
**CM72** - 72"  
**CM144** - 144"  
**CMLC(XX)**  
Custom Length  
(Specify in Inches)

#### CHN CHAIN MOUNT

SJ CORD / DECORATIVE CHAIN



ORDER: **CHN** (Length)  
SPECIFY LENGTH:  
**CHN36** - 36"  
**CHN72** - 72"  
**CHN144** - 144"  
**CHNLC(XX)**  
Custom Length  
(Specify in Inches)

\*MAXIMUM ONE PIECE STEM LENGTH IS 72". LONGER LENGTHS ARE POSSIBLE USING MULTIPLE STEMS AND COUPLERS.

### MOUNTING FINISH

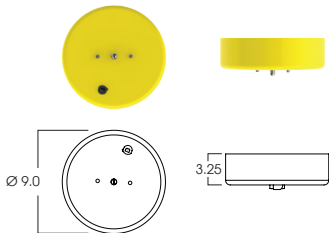
Standard Canopy / Stem or Cord mounting finish is matte white. Black fixtures receive matte black mounting finish, silver fixture receive silver mounting finish. Custom colors for canopy and stem are available upon request.

### MOUNTING COMPONENTS FINISH

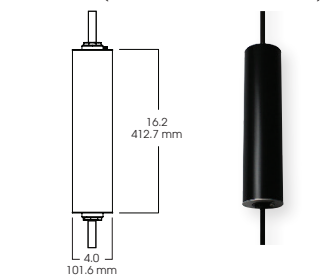
FIXTURE COLOR	CANOPY / STEM / CORD COLOR
Matte White, Textured White	Matte White
Matte Black, Textured Black, Bronze, Oil Rubbed Bronze	Matte Black
Platinum, Textured Silver, Silver	Silver
All Others	Matte White
Custom Color	Canopy / Stem Same Color as Fixture

### EMERGENCY BATTERY OPTIONS

**EMCP7W** - LARGE DRIVER CANOPY FOR 7W EMERGENCY BATTERY (FOR ALL CEILING MOUNT TYPES)



**EMLN7W** - 7W IN-LINE EMERGENCY BALLAST (FOR HM, HMAT, AND PM OPTIONS)



### REMOTE EMERGENCY BATTERY OPTIONS

**EMRM7W** - REMOTE EMERGENCY BATTERY (UP TO 12W, 50" MAX)

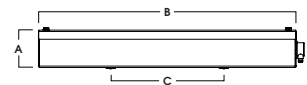


EM WATTAGE	A	B	C
EMRM5W	1.5	9.0	9.5
EMRM7W*	1.3	12.6	13.0
EMRM12W	1.3	12.8	13.3

\*STANDARD

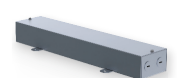


**EMEN7W** - REMOTE EMERGENCY BATTERY WITH ENCLOSURE (UP TO 12W, 50" MAX)



ENCLOSURE	A	B	C
EMEN5W	2.0	17.0	6.2
EMEN7W*	2.0	17.0	6.2
EMEN12W	2.0	17.0	6.2

\*STANDARD



Dimensions shown are nominal. Spectrum Lighting is continually improving products and reserves the right to make changes that will not alter performance or appearance with or without written notice.

<b>PROJECT:</b>	<b>TYPE:</b>
<b>CAT. NO.:</b>	