



# CLEAR TRIPLEX ITALIAN GLASS

## GV SERIES / 2700 LUMENS MAX LED



### CX-LEDGV

#### APPLICATION

Plazza CX Series Italian glass LED surface luminaire for decorative area lighting.

#### FEATURES

Clear inner layer, opal center, clear outer layer for brighter finish. Integral aluminum heatsink dissipates heat. 50,000 hours rated LED system life. Wall, ceiling, or pendant mounting.

#### FINISH

Multi-stage polyester powder-coat process applied on our dedicated paint lines. See mounting and color pages for standard finishes.

#### ELECTRONICS

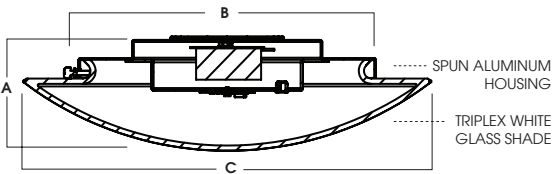
GV LED system features high brightness white Samsung LED's. 3 step MacAdam Ellipse binning. Standard CRI: 85+. Higher CRI, R9 and custom LED configurations are available; consult factory. Variety of electronic 120V/277V and dimming drivers.

#### CONSTRUCTION

Fixtures are spun in our factory from 0.063 high purity aluminum. Passive aluminum heatsink for optimal thermal management. Glass made in Italy, fixture made in the USA.

#### CODE COMPLIANCE

ARRA Compliant. ETL listed for damp locations. ADA Compliant. Manufactured and tested to UL Standard No. 1598/8750.



SERIES	A	B	C
CX1203LEDGV	3.7	6.8	12.0
CX1504LEDGV	4.0	6.8	14.5
CX1805LEDGV	4.0	6.8	17.1

WATTAGE TO LUMENS UPDATE			
CURRENT PART NUMBER EXAMPLE	PREVIOUS PART NUMBER EXAMPLE	SOURCE LUMENS <sup>1</sup>	SYSTEM WATTS
CX1203LEDGV15L	CX1203LEDGV14W	1500	9
CX1203LEDGV27L	CX1203LEDGV26W	2700	16

SERIES	LUMENS <sup>1</sup>	CCT	DRIVER / DIMMING <sup>3</sup>	OPTIONS <sup>4</sup>	MOUNTING <sup>5</sup>	FINISH <sup>7</sup>
CX1203LEDGV <sup>2</sup> CX1504LEDGV CX1805LEDGV	15L   1500 Lm 27L   2700 Lm	27K   2700K 30K   3000K 35K   3500K 40K   4000K	EX Electronic Driver, 120V/277V DS10X 10% 0-10V Dimming, 120V/277V DO10X 1% 0-10V Dimming, 120V/277V DS2W1 2 Wire, MLV Dimming, 120V DLTE1 Lutron 2 Wire Phase Dimming 120V Only	FS Fuse Holder and Fuse GS Ceiling Level Gasket	WM Wall Mount SM Surface Mount HM <sup>6</sup> Hang Straight PM <sup>6</sup> Rigid Pendant	MW <sup>8</sup> Matte White MB <sup>8</sup> Matte Black PT <sup>8</sup> Platinum TW Textured White TB Textured Black MT Textured Silver BZ Bronze OB Oil Rubbed Bronze CH Charcoal GH Graphite AC Champagne SN Sun Gold BR Brecchia Rust AN Anodic Natural CO Copper Metallic CC Custom Color

**EXAMPLE:** CX1504LEDGV15L35KEXGSSMMW

**NOTES:**  
 1 Nominal Source Lumens at 3500K 2 Available With 15L Only 3 Contact Factory for Additional Options 4 See Product Options Page for Details  
 5 See Mounting Page for Details on Components and Finishes 6 Specify Length in Inches: See Mounting Page for Available Lengths  
 7 Contact Factory for Special Finishes 8 Standard Finishes

Dimensions and values shown are nominal. Spectrum Lighting continually works to improve products and reserves the right to make changes which may alter the performance or appearance of products.



<b>PROJECT:</b>	<b>TYPE:</b>
<b>CAT. NO.:</b>	





SOME OPTIONS NOT AVAILABLE ON ALL FIXTURES. CONSULT SPECIFICATION SHEETS. SEE INDIVIDUAL SPECIFICATION SHEETS OR CONSULT FACTORY FOR ADDITIONAL INFORMATION. NOTE: THIS IS TYPICAL OF SPECLUME SPECIFICATION FOR PENDANT MOUNTING. INDIVIDUAL FIXTURES OR PROJECTS MAY HAVE SPECIALIZED REQUIREMENTS.

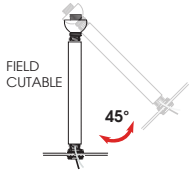
### MOUNTING TYPES

**HM\***  
HANG STRAIGHT  
45° SWIVEL 1/2" STEM - 3/8" NPT

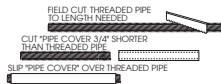


ORDER: **HM** (Length)  
SPECIFY LENGTH:  
**HM3** - 3"    **HM24** - 24"  
**HM6** - 6"    **HM36** - 36"  
**HM12** - 12"    **HM48** - 48"  
**HM18** - 18"    **HM72** - 72"  
**HMLC(XX)**  
Custom Length  
(Specify in Inches)

**HMAT\***  
HANG STRAIGHT ALL THREAD  
45° SWIVEL 1/2" STEM - 1/4" IP

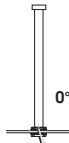


ORDER: **HMAT** (Length)  
SPECIFY LENGTH:  
**HMAT12** - 12"  
**HMAT24** - 24"  
**HMAT36** - 36"  
**HMAT48** - 48"  
**HMAT72** - 72"  
**HMATLC(XX)**  
Custom Length  
(Specify in Inches)



\*MAXIMUM ONE PIECE STEM LENGTH IS 72". LONGER LENGTHS ARE POSSIBLE USING MULTIPLE STEMS AND COUPLERS.

**PM\***  
RIGID PENDANT MOUNT  
RIGID 1/2" STEM - 3/8" NPT



ORDER: **PM** (Length)  
SPECIFY LENGTH:  
**PM3** - 3"    **PM24** - 24"  
**PM6** - 6"    **PM36** - 36"  
**PM12** - 12"    **PM48** - 48"  
**PM18** - 18"    **PM72** - 72"  
**PMLC(XX)**  
Custom Length  
(Specify in Inches)

**CD**  
CORD / CABLE MOUNT  
SJ CORD WITH 1/16" SS CABLE



ORDER: **CD** (Length)  
SPECIFY LENGTH:  
**CD36** - 36"  
**CD72** - 72"  
**CD144** - 144"  
**CDLC(XX)**  
Custom Length  
(Specify in Inches)

**CM**  
CORD MOUNT  
SJ CORD STRAIN RELIEF



ORDER: **CM** (Length)  
SPECIFY LENGTH:  
**CM36** - 36"  
**CM72** - 72"  
**CM144** - 144"  
**CMLC(XX)**  
Custom Length  
(Specify in Inches)

**CHN**  
CHAIN MOUNT  
SJ CORD / DECORATIVE CHAIN



ORDER: **CHN** (Length)  
SPECIFY LENGTH:  
**CHN36** - 36"  
**CHN72** - 72"  
**CHN144** - 144"  
**CHNLC(XX)**  
Custom Length  
(Specify in Inches)

### MOUNTING FINISH

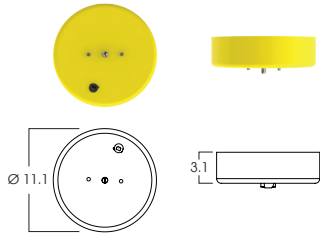
Standard Canopy / Stem or Cord mounting finish is matte white. Black fixtures receive matte black mounting finish, silver fixture receive silver mounting finish. Custom colors for canopy and stem are available upon request.

### MOUNTING COMPONENTS FINISH

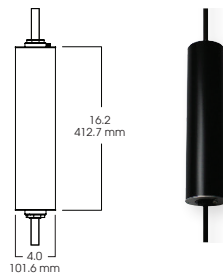
FIXTURE COLOR	CANOPY / STEM / CORD COLOR
Matte White, Textured White	Matte White
Matte Black, Textured Black, Bronze, Oil Rubbed Bronze	Matte Black
Platinum, Textured Silver, Silver	Silver
All Others	Matte White
Custom Color	Canopy / Stem Same Color as Fixture

### EMERGENCY BATTERY OPTIONS

**EMCP7W** - LARGE DRIVER CANOPY FOR 7W EMERGENCY BATTERY (FOR ALL CEILING MOUNT TYPES)

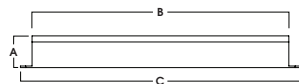


**EMLN7W** - 7W IN-LINE EMERGENCY BALLAST (FOR HM, HMAT, AND PM OPTIONS)



### REMOTE EMERGENCY BATTERY OPTIONS

**EMRM7W** - REMOTE EMERGENCY BATTERY (UP TO 12W, 50' MAX)

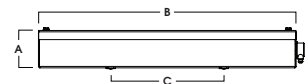


EM WATTAGE	A	B	C
EMRM5W	1.5	9.0	9.5
EMRM7W*	1.3	12.6	13.0
EMRM12W	1.3	12.8	13.3

\*STANDARD

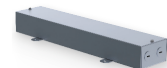


**EMEN7W** - REMOTE EMERGENCY BATTERY WITH ENCLOSURE (UP TO 12W, 50' MAX)



ENCLOSURE	A	B	C
EMEN5W	2.0	17.0	6.2
EMEN7W*	2.0	17.0	6.2
EMEN12W	2.0	17.0	6.2

\*STANDARD



Dimensions shown are nominal. Spectrum Lighting is continually improving products and reserves the right to make changes that will not alter performance or appearance with or without written notice.

<b>PROJECT:</b>	<b>TYPE:</b>
<b>CAT. NO.:</b>	