



CYLINDRO CHANDELIER

GV SERIES / 3 x 2700 LUMENS

speculume decorative



3XCY830RDFALEDGV

APPLICATION

Cylindro 8" Pendant cluster features a clean design with a 3 luminaire grouping. 18" diameter central canopy with adjustable cord lengths for ease of installation.

FEATURES

Fixtures are designed and manufactured in our factory. Cylindro series acrylic pendant are fabricated from opal acrylic. LED module is upgradable for ease of maintenance. Electronic LED Driver in canopy for thermal management. A variety of finishes and mounting is available.

FINISH

Multi-stage polyester powder-coat process applied on our dedicated paint lines. See mounting and color pages for standard finishes.

ELECTRONICS

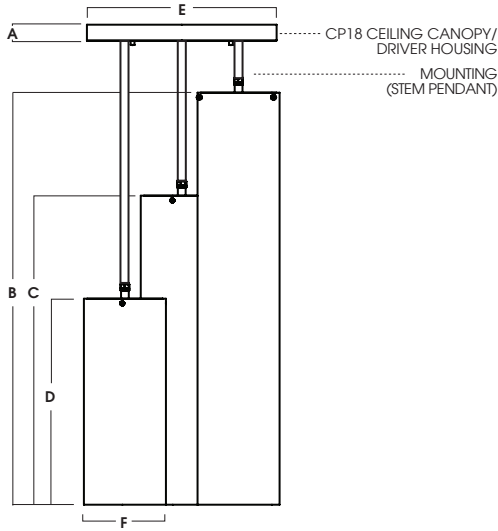
GV LED system features high brightness white Samsung LED's. 3 step MacAdam Ellipse binning. Standard CRI: 85+. Higher CRI, R9 and custom LED configurations are available; consult factory. Variety of electronic 120V/277V and dimming drivers.

CONSTRUCTION

Fixtures constructed of machined and formed aluminum and opal acrylic. Carbon gasket for optimal thermal management.

CODE COMPLIANCE

ARRA Compliant. ETL listed for damp locations. Manufactured and tested to UL standards No. 1598/8750.



| A | B | C | D | E | F |
|---------|---------|--------|--------|----------|----------|
| 1.6 | 40.0 | 30.0 | 20.0 | 18.4 | 8.0 |
| 40.6 mm | 1016 mm | 762 mm | 508 mm | 467.4 mm | 203.2 mm |

| WATTAGE / LUMENS DATA | | |
|-----------------------|----------------------------|--------------|
| PART NUMBER | SOURCE LUMENS ¹ | SYSTEM WATTS |
| 3XCY830RDFALEDGV15L | 4500 | 27 |
| 3XCY830RDFALEDGV27L | 8100 | 48 |

| SERIES | LUMENS ¹ | CCT | DRIVER / DIMMING ² | MOUNTING ³ | OPTIONS ⁵ | FINISH ⁷ |
|-------------------|---------------------|---------|-------------------------------|-----------------------|--|---|
| 3XCY0830RDFALEDGV | 15L | 1500 Lm | EX | CP18 ⁴ | CM3X ⁶ PM3X ⁶ | MW ⁶ MB ⁶ PT ⁶ TW TB MT BZ OB CH GH AC SN BR AN CO CC |
| | 27L | 2700 Lm | DS10X | | | |
| | 35K | 3500K | DO10X | | | |
| | 40K | 4000K | DS2W1 | | | |

EXAMPLE: 3XCY0830RDFALEDGV15L30KEXCP18CMX36MW

NOTES:
 1 Nominal Source Lumens at 3500K 2 Contact Factory for Additional Options 3 See Mounting Page for Details on Components and Finishes 4 Required for Driver
 5 See Product Options Page for Details 6 Specify Length in Inches: See Mounting Page for Available Lengths 7 Contact Factory for Special Finishes 8 Standard Finishes



Dimensions and values shown are nominal. Spectrum Lighting continually works to improve products and reserves the right to make changes which may alter the performance or appearance of products.



| | |
|-----------|-------|
| PROJECT: | TYPE: |
| CAT. NO.: | |





SOME OPTIONS NOT AVAILABLE ON ALL FIXTURES. CONSULT SPECIFICATION SHEETS. SEE INDIVIDUAL SPECIFICATION SHEETS OR CONSULT FACTORY FOR ADDITIONAL INFORMATION. NOTE: THIS IS TYPICAL OF SPECLUME SPECIFICATION FOR PENDANT MOUNTING. INDIVIDUAL FIXTURES OR PROJECTS MAY HAVE SPECIALIZED REQUIREMENTS.

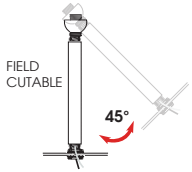
MOUNTING TYPES

HM*
HANG STRAIGHT
45° SWIVEL 1/2" STEM - 3/8" NPT

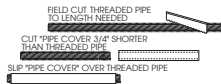


ORDER: **HM** (Length)
SPECIFY LENGTH:
HM3 - 3" **HM24** - 24"
HM6 - 6" **HM36** - 36"
HM12 - 12" **HM48** - 48"
HM18 - 18" **HM72** - 72"
HMLC(XX)
Custom Length
(Specify in Inches)

HMAT*
HANG STRAIGHT ALL THREAD
45° SWIVEL 1/2" STEM - 1/4" IP

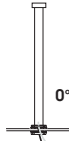


ORDER: **HMAT** (Length)
SPECIFY LENGTH:
HMAT12 - 12"
HMAT24 - 24"
HMAT36 - 36"
HMAT48 - 48"
HMAT72 - 72"
HMATLC(XX)
Custom Length
(Specify in Inches)



*MAXIMUM ONE PIECE STEM LENGTH IS 72". LONGER LENGTHS ARE POSSIBLE USING MULTIPLE STEMS AND COUPLERS.

PM*
RIGID PENDANT MOUNT
RIGID 1/2" STEM - 3/8" NPT



ORDER: **PM** (Length)
SPECIFY LENGTH:
PM3 - 3" **PM24** - 24"
PM6 - 6" **PM36** - 36"
PM12 - 12" **PM48** - 48"
PM18 - 18" **PM72** - 72"
PMLC(XX)
Custom Length
(Specify in Inches)

CD
CORD / CABLE MOUNT
SJ CORD WITH 1/16 SS CABLE



ORDER: **CD** (Length)
SPECIFY LENGTH:
CD36 - 36"
CD72 - 72"
CD144 - 144"
CDLC(XX)
Custom Length
(Specify in Inches)

CM
CORD MOUNT
SJ CORD STRAIN RELIEF



ORDER: **CM** (Length)
SPECIFY LENGTH:
CM36 - 36"
CM72 - 72"
CM144 - 144"
CMLC(XX)
Custom Length
(Specify in Inches)

CHN
CHAIN MOUNT
SJ CORD / DECORATIVE CHAIN



ORDER: **CHN** (Length)
SPECIFY LENGTH:
CHN36 - 36"
CHN72 - 72"
CHN144 - 144"
CHNLC(XX)
Custom Length
(Specify in Inches)

MOUNTING FINISH

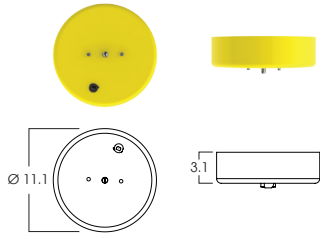
Standard Canopy / Stem or Cord mounting finish is matte white. Black fixtures receive matte black mounting finish, silver fixture receive silver mounting finish. Custom colors for canopy and stem are available upon request.

MOUNTING COMPONENTS FINISH

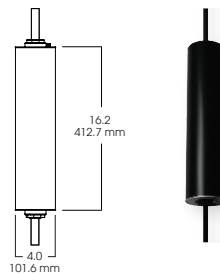
| FIXTURE COLOR | CANOPY / STEM / CORD COLOR |
|--|-------------------------------------|
| Matte White, Textured White | Matte White |
| Matte Black, Textured Black, Bronze, Oil Rubbed Bronze | Matte Black |
| Platinum, Textured Silver, Silver | Silver |
| All Others | Matte White |
| Custom Color | Canopy / Stem Same Color as Fixture |

EMERGENCY BATTERY OPTIONS

EMCP7W - LARGE DRIVER CANOPY FOR 7W EMERGENCY BATTERY (FOR ALL CEILING MOUNT TYPES)



EMLN7W - 7W IN-LINE EMERGENCY BALLAST (FOR HM, HMAT, AND PM OPTIONS)



REMOTE EMERGENCY BATTERY OPTIONS

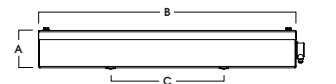
EMRM7W - REMOTE EMERGENCY BATTERY (UP TO 12W, 50' MAX)



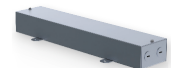
| EM WATTAGE | A | B | C |
|------------|-----|------|------|
| EMRM5W | 1.5 | 9.0 | 9.5 |
| EMRM7W* | 1.3 | 12.6 | 13.0 |
| EMRM12W | 1.3 | 12.8 | 13.3 |



EMEN7W - REMOTE EMERGENCY BATTERY WITH ENCLOSURE (UP TO 12W, 50' MAX)



| ENCLOSURE | A | B | C |
|-----------|-----|------|-----|
| EMEN5W | 2.0 | 17.0 | 6.2 |
| EMEN7W* | 2.0 | 17.0 | 6.2 |
| EMEN12W | 2.0 | 17.0 | 6.2 |



Dimensions shown are nominal. Spectrum Lighting is continually improving products and reserves the right to make changes that will not alter performance or appearance with or without written notice.

| | |
|------------------|--------------|
| PROJECT: | TYPE: |
| CAT. NO.: | |