

4" ROUND MR16 DOWNLIGHT

MR16 SERIES / 65 WATT MAX INC

recessed fixtures

SGDG4X

APPLICATION

3.5" aperture round MR16 downlight.

FEATURES

Efficient reflector design optimized for Halogen lamps. Integral 5/8" (0.625) plaster ring. Maximum wattage label (MWL) for low wattage Halogen or LED lamps. Tool-less transformer access. Multi-bar adjustable mounting brackets.

FINISH

Variety of powdercoat and anodized finishes available on trim. Eco Black (EB) finish available on frame/housing.

ELECTRONICS

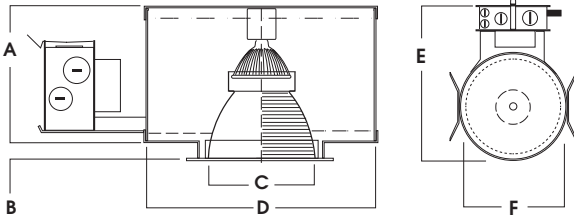
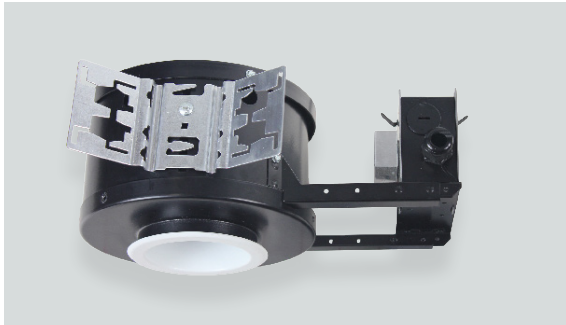
120V Electronic transformer is standard.

CONSTRUCTION

Frame constructed of 20 ga. aluminum. Trim spun from .063 high purity aluminum and finished to specification.

LABELS

ETL Listed for Damp Locations. Wet location available. Manufactured and tested to UL Standard No. 1598.



A	B	C	D	E	F
4.6	0.6	3.5	8.0	13.0	8.0
117.5 mm	15.8 mm	88.9 mm	203.2 mm	330.2 mm	203.2 mm

Max Ceiling Thickness:	1.5 (38.1 mm)
Ceiling Cutout:	4.6 ø (116.8 mm ø)
Fixture Weight:	4.0 lbs

PINHOLE TRIM



SERIES	TRANSFORMER	OPTIONS	TRIM / FINISH	TRIM OPTIONS	FIXTURE LAMPING	
					LAMP	MAX WATT
SGDG4X	E1-Electronic, 120V E2-Electronic, 277V MGN1-Magnetic Transformer 120V MGN2-Magnetic Transformer 277V E1LED-Transformer for use with LED MR16 Lamps 120v NTR- No Transformer	BH27-27" Bar Hangers Supplied BH6-Expandable Bar Hangers, 6" - 12" BH12-Expandable Bar Hangers, 12" - 24" CB24-C-Channel Bars CCEA-Chicago Ceiling Plenum CCEA CR-Corrosion Resistant FS-Fuse Holder and Fuse IC-Insulation Contact <small>See IC Options</small> MWL(**)-Maximum Wattage Dedicated Transformer and Label <small>20w, 37w, 50w</small> PR-Plaster Ring TBC-T-bar Clips TR-Top Relamping Option EB-Eco Black Housing Finish	AR4250-SG-Semi-Diffuse Low Iridescents Standard CL-Clear Bright Alzak GO-Gold Alzak HZ-Matte Low Iridescents PW-Pewter Alzak UM-Umber Alzak WE-Wheat Alzak BK-Black Finish WH-White Finish PF-Polished Flange BB-Black Micro Baffle WB-White Micro Baffle	GL-Clear Glass Lens Standard GS-Gasket SO-Micro Prism Solite™ Lens PG-Prismatic (T73) Lens PH ¹ -Pin Hole Trim Matte White Standard LN16-See Recessed Fixtures/Lens Options for Lens, Louver, and Filter Accessories WL-Wet Location <small>¹ Specify PH/MB for Matte Black</small>	MR16	65w

*For Available Decorative Architectural Trims. Consult Factory

EXAMPLE: SGDG4XE1/AR4250SGGL



PROJECT: _____
 TYPE: _____



Dimensions and values shown are nominal. Spectrum Lighting continually works to improve products and reserves the right to make changes which may alter the performance or appearance of products.