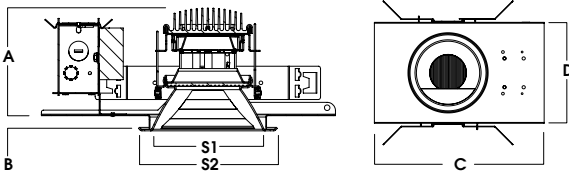
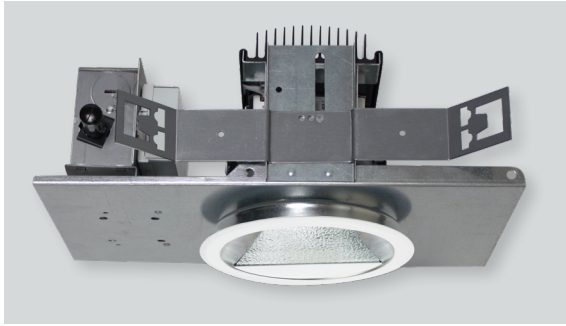
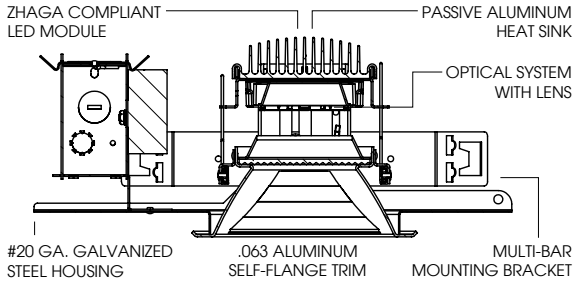


5" ROUND LED WALL WASH

OS SERIES / 4500 LUMENS MAX



A	B	C	D	S1	S2
4.9	0.625	13.3	7.88	5.0	6.3
124.46 mm	15.9 mm	337.82 mm	200.2 mm	127.0 mm	160.02 mm

SGW5LEDOS - TRIM FLANGE / NON-IC RATED

APPLICATION

5" LED Recessed wall wash aperture downlight for general illumination.

FEATURES

Two-stage optical system for smooth light distribution. Zhaga International Standard LED module for ease of maintenance and replacement. Shallow plenum design. Tool-less LED module, driver and J-Box access. Multi-Bar mounting brackets. BH27 Standard mounting bars included. Posi-lock trim retention torsion springs. Integral 0.625" collar.

TRIM FINISH

A variety of architectural powdercoat and anodized finishes are available. Matte white flange is standard.

ELECTRONICS

LED module features high brightness white Osram LEDs. 3-step MacAdam Ellipse binning and CRI 84 minimum. Full range of electronic 120V/277V and dimming drivers.

CONSTRUCTION

Housing/frame constructed of #20 ga. galvanized steel to resist corrosion. Self-flanged one piece trim spun from 0.063" thick high purity aluminum and finished to specification. Passive machined aluminum heatsink.

CODE COMPLIANCE

BAA Compliant. Non-IC rated. ETL certified to meet US and Canadian standards. Suitable for dry or damp locations. Optional Wet location. LM79/LM80/TM21 data available. Manufactured and tested to UL standards No. 1598/8750.

WATTAGE TO LUMENS UPDATE					
CURRENT PART NUMBER EXAMPLE	PREVIOUS PART NUMBER EXAMPLE	SOURCE LUMENS ¹	DELIVERED LUMENS ²	SYSTEM WATTS	LPW
SGW5LEDOS10L	SGW5LEDOS14W	1100	691	11	63
SGW5LEDOS15L	N/A	1500	845	13	65
SGW5LEDOS20L	SGW5LEDOS25W	2000	1468	20	73
SGW5LEDOS30L	SGW5LEDOS35W	3000	2018	28	72
SGW5LEDOS45L	N/A	4500	2986	41	73

SERIES	LUMENS ¹	CCT	DRIVER / VOLTAGE ³	OPTIONS ⁴	TRIM	FINISH	TRIM OPTIONS	
SGW5LEDOS	10L	1100 Lm	27K 2700K	E Electronic Driver DS10_ 10%, 0-10V DO10_ 1%, 0-10V DS2W1 1%, ELV/MLV, 120V DLTE1 1%, Lutron® ELV/MLV, 120V DL3E_ 1%, Lutron® EcoSystem® Fade EL10_ 1%, eldoLED ED01_ 0.1%, eldoLED DALI_ DALI Control	1 120V 2 277V	BH27⁵ 27" Solid Bars H12 12" - 24" Expandable Bars H06 6" - 12" Expandable Bars CB24 24" C-Channel Bars FS Fusing EB Fixture Painted Black CR Corrosion Resistant PR⁶ Deep Ceiling Extension GR Goof Ring ZIG⁷ ZigBee Module BLU⁷ Bluetooth LE EM⁸ 7W Emergency Battery Test Switch Remote AMB Anti-Microbial Finish	AR5923OS MW⁹ Matte White MB Matte Black SG Semi-Diffuse HZ Haze Full Diffuse PT Platinum Silver BZ Bronze OB Oil Rubbed Bronze CH Charcoal AS Anodic Sapphire AN Anodic Natural AC Anodic Champagne AZ Anodic Bronze AK Anodic Black AM Anodic Malachite SN Sun Gold CO Copper Metallic GH Graphite CC¹⁰ Custom Color	SK¹¹ Skytex™ Lens GS Gasket WL Wet Location PF¹² Polished Flange AMB Anti-Microbial Finish
	15L	1500 Lm	30K 3000K					
	20L	2000 Lm	35K 3500K					
	30L	3000 Lm	40K 4000K					
	45L	4500 Lm						

EXAMPLE: SGW5LEDOS20L35KE1/AR5923OSSGSK

NOTES:
 1 Nominal Source Lumens at 35K 2 Nominal Delivered Lumens at 35K with SG-SK 3 Contact Factory for Additional Options 4 See Product Options Page for Details 5 Standard Bar Hangers 6 Contact Factory
 7 Order DS101/2 When Specifying ZIG or BLU 8 Standard EM 9 Standard Finish 10 Contact Factory for Special Finishes 11 Standard Lens 12 Flange and Reflector Same Finish



PROJECT: _____
 TYPE: _____



Dimensions and values shown are nominal. Spectrum Lighting continually works to improve products and reserves the right to make changes which may alter the performance or appearance of products.