



LUMENS AND WATTAGE CHART					
PART NUMBER	LUMENS	SOURCE LUMENS ¹	DELIVERED LUMENS ²	SYSTEM WATTS	LPW
SD3F	OC10L	1100	570	15.2	38

3" SQUARE RECESSED 1100 LUMENS MAX

SHALLOW IC / NEW CONSTRUCTION

APPLICATION

Versatile 4" deep shallow plenum 3" square recessed LED fixture features downlight trim option with insulated ceiling construction housing.

FEATURES

Two-stage optical system for smooth low glare light distribution. Zhaga International Standard LED module for ease of maintenance and replacement. Shallow plenum design. Tool-less LED module, driver, and J-Box access. Multi-Bar mounting brackets. Posi-lock trim retention springs. Integral 0.625" collar, works with up to 1" ceiling.

TRIM FINISH

A variety of architectural powdercoat finishes are available. Trims available with and without lens. Inside trim and flange are finished in same color unless otherwise specified (WF= White Flange).

ELECTRONICS

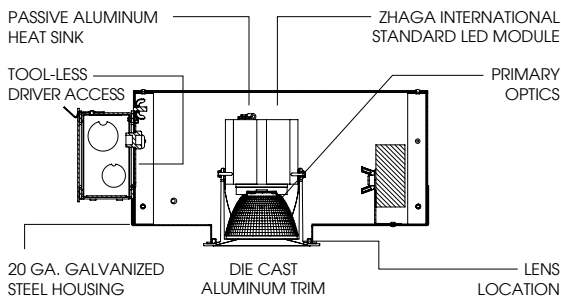
LED module features high brightness white Osram LEDs. 3-step MacAdam Ellipse binning and CRI 84 minimum, 90 CRI available. Variety of electronic 120V/277V and dimming drivers.

CONSTRUCTION

Housing/frame constructed of #20 ga. galvanized steel to resist corrosion. Self-flanged one piece die-cast aluminum trim is finished to specification. Passive machined aluminum heatsink.

CODE COMPLIANCE

BAA Compliant. ETL certified to meet US and Canadian standards. Suitable for dry or damp locations. Optional Wet Location. Manufactured and tested to UL standards No. 1598/8750.



FIXTURE HOUSING SPECIFICATION

SERIES	LM ¹	DRIVER / VOLTAGE ³	OPTIONS ⁴
SDFI3S 4" Deep IC New Construction	OC10L 1100 Lm	E Electronic Driver 10%, 0-10V DS10_ 1%, 0-10V DO10_ 1%, ELV/MLV, 120V DS2W1	1 120V 2 277V H12 12" - 24" Expandable Bars H06 6" - 12" Expandable Bars BH27 27" Solid Bars CB24 24" C-Channel Bars CH24 24" Chicago Bars FS Fusing EMRM Remote Emergency Battery Pack EB Black Housing PR2⁵ 2" Thick Ceiling Adaptor

TRIM / MODULE SPECIFICATION

TRIM	LM ¹	CCT	OPTICS	FINISH ⁷	OPTIONS
SD3FS Downlight Shallow IC	OC10L 1100 Lm	90 CRI	ND⁶ 20° MD 28° WD 36° XW 48°	MW⁸ Matte White MB Matte Black PT Platinum Silver BZ Bronze CH Charcoal OB Oil Rubbed Bronze AS Sapphire AM Malachite SN Sun Gold CO Copper Metallic GH Graphite CC⁹ Custom Color	NL No Lens SO Solite™ Micro Prism Lens GL Clear Glass Lens FG Frosted Glass Lens BB Black Baffle PR2⁵ 2" Thick Ceiling Adaptor WL Wet Location WF¹⁰ White Flange
		27HK 2700K 30HK 3000K			
		84 CRI			
		35K 3500K 40K 4000K			

EXAMPLE: SDFI3SOC10LDS2W1H12/SD3FOC10L27KMDMWSO

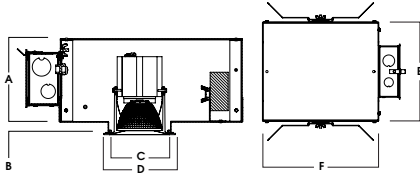
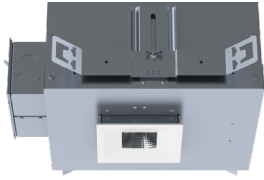
NOTES:
 1 Nominal Source Lumens at 30K 2 Nominal Delivered Lumens 84 CRI at 30K with MD-MW-SO 3 Contact Factory for Additional Options 4 Specify Mounting Bar as Brackets Are Different 5 Contact Factory 6 GL Lens Only 7 Inside Trim And Flange Will Match Color Specified 8 Standard Finish 9 Contact Factory for Special Finishes 10 Otherwise Flange Is Same Color As Interior Of Trim

Dimensions and values shown are nominal. Spectrum Lighting continually works to improve products and reserves the right to make changes which may alter the performance or appearance of products.



HOUSING DIMENSIONS

SDI3S - IC New Construction



A	B	C	D	E	F
4.0	425	3.75	4.5	9.5	10L-15L: 13.2
101.6 mm	15.9 mm	95.3 mm	114.3 mm	241.3 mm	20L: 19.2

Fixture Weight: 5.0 lbs

Ceiling Cutout: 4.12 Sq

AVAILABLE TRIM / MODULE TYPES

SD3F - DOWNLIGHT

