



3" SQUARE RECESSED 3100 LUMENS MAX

NON-IC / IC / REMODEL

APPLICATION

Versatile shallow plenum 3" square aperture recessed LED fixture features downlight, wall wash and adjustable accent trim options that are installed in one universal housing.

FEATURES

Two-stage optical system for smooth low glare light distribution. Zhaga International Standard LED module for ease of maintenance and replacement. Shallow plenum design. Tool-less LED module, driver, and J-Box access. Multi-Bar mounting brackets. Posi-lock trim retention springs. Integral 0.625" collar, works with up to 1" ceiling.

TRIM FINISH

A variety of architectural powdercoat finishes are available. Trims available with and without lens. Inside trim and flange are finished in same color unless otherwise specified (WF= White Flange).

ELECTRONICS

LED module features high brightness white Osram LEDs. 3-step MacAdam Ellipse binning and CRI 84 minimum, 90 CRI available. Variety of electronic 120V/277V and dimming drivers.

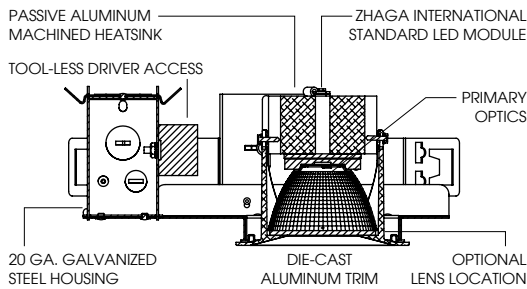
CONSTRUCTION

Housing/frame constructed of #20 ga. galvanized steel to resist corrosion. Self-flanged one piece die-cast aluminum trim is finished to specification. Passive machined aluminum heatsink.

CODE COMPLIANCE

BAA Compliant. ETL certified to meet US and Canadian standards. Suitable for dry or damp locations. Optional Wet Location. Manufactured and tested to UL standards No. 1598/8750.

LUMENS AND WATTAGE CHART					
PART NUMBER	LUMENS	SOURCE LUMENS ¹	DELIVERED LUMENS ²	SYSTEM WATTS	LPW
SD3F	OC10L	1100	570	15.2	38
SD3F	OC15L	1500	759	18.5	41
SD3F	OC20L	2100	1037	23.5	46
SD3F	OC30L	3100	1553	31.0	50



FIXTURE HOUSING SPECIFICATION

SERIES	LM ¹	DRIVER / VOLTAGE ³	OPTIONS ⁴
SDFO3 New Construction	OC10L 1100 Lm	E ₋ DS10 ₋ DO10 ₋ DS2W1	H12 12" - 24" Expandable Bars H06 6" - 12" Expandable Bars BH27 27" Solid Bars CB24 24" C-Channel Bars CH24 24" Chicago Bars FS Fusing EM ⁵ Integral Emergency Battery EMRM Remote Emergency Battery Pack EB Black Housing PR2 ⁶ 2" Thick Ceiling Adaptor
		Electronic Driver 10%, 0-10V 1%, 0-10V 1%, ELV/MLV, 120V	
SDFI3 6.5" Deep 20L IC New Construction	OC20L 2100 Lm		
		OC30L 3100 Lm	
RTS3 Remodel Construction			

TRIM / MODULE SPECIFICATION

TRIM	LM ¹	CCT	OPTICS	FINISH ⁹	OPTIONS
SD3F Downlight	90 CRI		ND ⁸ MD 28° WD 36° XW 48°	MW ¹⁰ MB Matte Black PT Platinum Silver BZ Bronze CH Charcoal OB Oil Rubbed Bronze AS Sapphire AM Malachite SN Sun Gold CO Copper Metallic GH Graphite CC ¹¹ Custom Color	NL No Lens SO Solite™ Micro Prism Lens SK ¹² Skytex™ Lens Linear Distribution GL Clear Glass Lens FG Frosted Glass Lens BB Black Baffle PR2 ⁶ 2" Thick Ceiling Adaptor WL Wet Location WF ¹³ White Flange
	OC10L 1100 Lm	27HK 30HK 2700K 3000K			
	OC15L 1500 Lm				
SA3F 35° Adjustable	OC15L 1500 Lm				
SI3F 15° Adjustable	OC20L 2100 Lm	30HK 3000K			
SW3F ⁷ Wall Wash	84 CRI				
	OC10L 1100 Lm	35K 40K 3500K 4000K			
	OC15L 1500 Lm				
SH3F Pinhole	OC20L 2100 Lm				
	OC30L 3100 Lm				

EXAMPLE: SDFO3OC10LDS2W1H12/SD3FOC10L27KNDMWSO

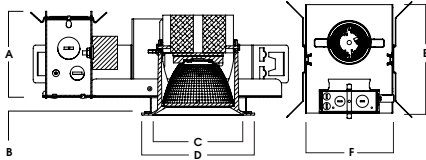
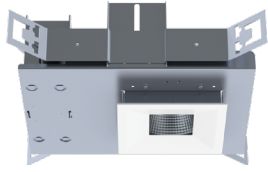
NOTES:
1 Nominal Source Lumens at 30K 2 Nominal Delivered Lumens 84 CRI at 30K with MD-MW-SO 3 Contact Factory for Additional Options 4 Specify Mounting Bar as Brackets Are Different 5 Not Available in IC 6 Contact Factory 7 XW Beam Only 8 GL Lens Only 9 Inside Trim And Flange Will Match Color Specified 10 Standard Finish 11 Contact Factory for Special Finishes 12 Standard Lens for Wall Wash 13 Otherwise Flange Is Same Color As Interior Of Trim

Dimensions and values shown are nominal. Spectrum Lighting continually works to improve products and reserves the right to make changes which may alter the performance or appearance of products.



AVAILABLE TRIM / MODULE TYPES

SDF03 - New Construction

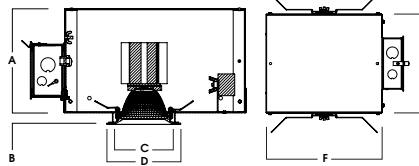
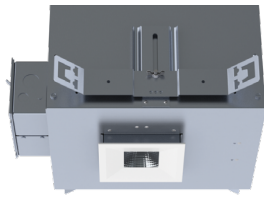


LUMENS	A	B	C	D	E	F
OC10L	3.43	.625	3.75	4.5	9.6	7.6
OC15L	3.67	.625	3.75	4.5	9.6	7.6
OC20L	4.17	.625	3.75	4.5	9.6	7.6
OC30L	4.17	.625	3.75	4.5	9.6	7.6

Fixture Weight: 4.0 lbs

Ceiling Cutout: 4.12 Sq

SDF1 - IC New Construction

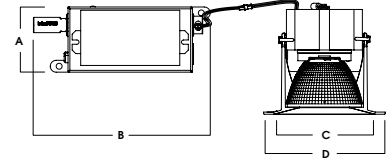


A	B	C	D	E	F
6.4	.625	3.8	4.5	9.5	10L-15L: 13.2 20L: 19.2
162.6 mm	15.9 mm	96.5 mm	114.3 mm	241.3 mm	

Fixture Weight: 5.0 lbs

Ceiling Cutout: 4.12 Sq

RTS3 - Remodel Construction



A	B	C	D
2.8	7.5	3.75	4.5
71.1 mm	190.5 mm	95.3 mm	114.3 mm

Fixture Weight: 2.0 lbs

Ceiling Cutout: 4.12 Sq

AVAILABLE TRIM / MODULE TYPES

SD3F - DOWNLIGHT



SA3F - 35° ADJUSTABLE



SI3F - 15° ADJUSTABLE



SW3F - WALL WASH



SH3F - PINHOLE

