



## 3" ROUND RECESSED 1100 LUMENS MAX

### SHALLOW IC / NEW CONSTRUCTION

#### APPLICATION

Versatile 4" deep shallow plenum 3" round recessed LED fixture features downlight trim option with insulated ceiling construction housing.

#### FEATURES

Two-stage optical system for smooth low glare light distribution. Zhaga International Standard LED module for ease of maintenance and replacement. Shallow plenum design. Tool-less LED module, driver, and J-Box access. Multi-Bar mounting brackets. Posi-lock trim retention springs. Integral 0.625" collar, works with up to 1" ceiling.

#### TRIM FINISH

A variety of architectural powdercoat finishes are available. Trims available with and without lens. Inside trim and flange are finished in same color unless otherwise specified (WF= White Flange).

#### ELECTRONICS

LED module features high brightness white Osram LEDs. 3-step MacAdam Ellipse binning and CRI 84 minimum, 90 CRI available. Variety of electronic 120V/277V and dimming drivers.

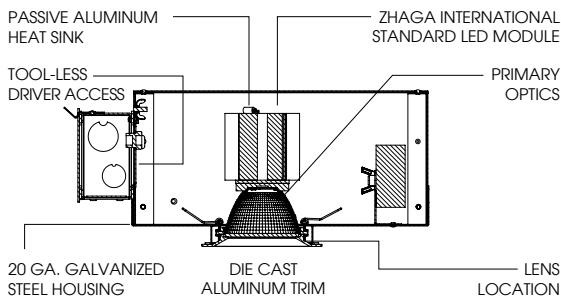
#### CONSTRUCTION

Housing/frame constructed of #20 ga. galvanized steel to resist corrosion. Self-flanged one piece die-cast aluminum trim is finished to specification. Passive machined aluminum heatsink.

#### CODE COMPLIANCE

BAA Compliant. ETL certified to meet US and Canadian standards. Suitable for dry or damp locations. Optional Wet Location. Manufactured and tested to UL standards No. 1598/8750.

LUMENS AND WATTAGE CHART					
PART NUMBER	LUMENS	SOURCE LUMENS <sup>1</sup>	DELIVERED LUMENS <sup>2</sup>	SYSTEM WATTS	LPW
RD3F	OC10L	1100	777	15.2	51



#### FIXTURE HOUSING SPECIFICATION

SERIES	LM <sup>1</sup>	DRIVER / VOLTAGE <sup>3</sup>	OPTIONS <sup>4</sup>
<b>RDF3S</b> 4" Deep IC New Construction	<b>OC10L</b> 1100 Lm	<b>E</b> Electronic Driver 10%, 0-10V <b>DS10</b> <b>DO10</b> 1%, 0-10V <b>DS2W1</b> 1%, ELV/MLV, 120V	<b>H12</b> 12" - 24" Expandable Bars <b>H06</b> 6" - 12" Expandable Bars <b>BH27</b> 27" Solid Bars <b>CB24</b> 24" C-Channel Bars <b>CH24</b> 24" Chicago Bars <b>FS</b> Fusing <b>EMRM</b> Remote Emergency Battery Pack <b>EB</b> Black Housing <b>PR2<sup>5</sup></b> 2" Thick Ceiling Adaptor

#### TRIM / MODULE SPECIFICATION

TRIM	LM <sup>1</sup>	CCT	OPTICS	FINISH <sup>7</sup>	OPTIONS
<b>RD3FS</b> Downlight Shallow IC	<b>OC10L</b> 1100 Lm	90 CRI	<b>ND<sup>6</sup></b> 20° <b>MD</b> 28° <b>WD</b> 36° <b>XW</b> 48°	<b>MW<sup>8</sup></b> Matte White <b>MB</b> Matte Black <b>PT</b> Platinum Silver <b>BZ</b> Bronze <b>CH</b> Charcoal <b>OB</b> Oil Rubbed Bronze <b>AS</b> Sapphire <b>AM</b> Malachite <b>SN</b> Sun Gold <b>CO</b> Copper Metallic <b>GH</b> Graphite <b>CC<sup>9</sup></b> Custom Color	<b>NL</b> No Lens <b>SO</b> Solite™ Micro Prism Lens <b>GL</b> Clear Glass Lens <b>FG</b> Frosted Glass Lens <b>BB</b> Black Baffle <b>PR2<sup>5</sup></b> 2" Thick Ceiling Adaptor <b>WL</b> Wet Location <b>WF<sup>10</sup></b> White Flange
		27HK 2700K 30HK 3000K			
		84 CRI			
		35K 3500K 40K 4000K			

EXAMPLE: RDFI3SOC10LDS2W1H12/RD3FOC10L27KMDMWSO

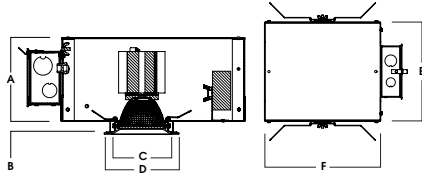
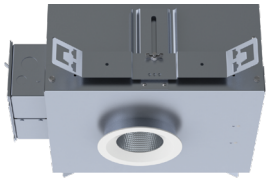
**NOTES:**  
 1 Nominal Source Lumens at 30K 2 Nominal Delivered Lumens 84 CRI at 30K with MD-MW-SO 3 Contact Factory for Additional Options 4 Specify Mounting Bar as Brackets Are Different 5 Contact Factory 6 GL Lens Only 7 Inside Trim And Flange Will Match Color Specified 8 Standard Finish 9 Contact Factory for Special Finishes 10 Otherwise Flange Is Same Color As Interior Of Trim

Dimensions and values shown are nominal. Spectrum Lighting continually works to improve products and reserves the right to make changes which may alter the performance or appearance of products.



# HOUSING DIMENSIONS

RD3FS - IC New Construction



A	B	C	D	E	F
4.0	∅25	3.63	4.5	9.6	10L-15L: 13.2
101.6 mm	15.9 mm	92.2 mm	114.3 mm	243.8 mm	20L: 19.2

Fixture Weight: 5.0 lbs

Ceiling Cutout: Ø 4"

# AVAILABLE TRIM / MODULE TYPES

RD3F - DOWNLIGHT

