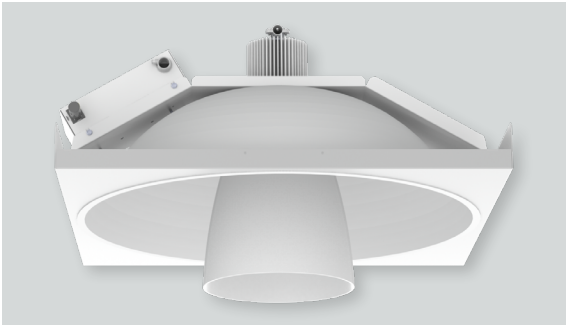




ICON 2' x 2' RECESSED DECORATIVE ILLUMITECH DECORATIVE / 4000 LUMENS



SGV22XT - TRIM FLANGE / NON-IC RATED

APPLICATION

SG22V features a shallow matte white reflector that glows gently from deco triplex glass cone. May be recessed in dry wall ceiling or used in 2' x 2' grid lay in applications.

FEATURES

Single-stage optical system for smooth light distribution and focus control. Quick change LED module for job site adjustment and fixture maintenance. Shallow plenum design. Tool-less driver and j-box access. Mechanical reflector trim and decorative glass installation.

TRIM FINISH

Matte White flange is standard.

ELECTRONICS

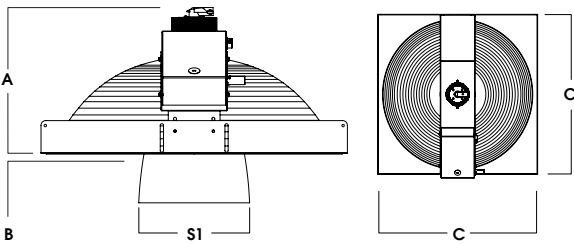
LED system features Xicato LED module with proprietary phosphor technology that provides consistent, stable color with CCT control of +/- 100K over life of the light engine. Base CRI is 83 with 2-step MacAdam Ellipse binning. High CRI is 98 with 1x2-step MacAdam Ellipse binning. Variety of electronic 120V/277V and dimming drivers.

CONSTRUCTION

Housing/frame constructed of #20 ga. galvanized steel and powdercoated to resist corrosion. Upper reflector is spun .063 1100-0 aluminum. Glass is molded triplex with etched surface.

CODE COMPLIANCE

BAA Compliant. Non-IC rated. ETL certified to meet US and Canadian standards. Suitable for dry or damp locations. Manufactured and tested to UL standards No. 1598/8750.



A	B	C	S1
11.3 287.0 mm	3.8 96.5 mm	23.7 601.98 mm	8.6 28.4 mm

SERIES	LUMENS ¹	CCT	DRIVER / VOLTAGE ²	OPTIONS ³	TRIM	FINISH	GLASS CONE ⁷			
SGV22XT	83 CRI		E_ Electronic Driver DS10_ 10% 0-10V DO10_ 1% 0-10V DS2W1 1%, ELV/MLV, 120V DLTE1 1% Lutron® 2-Wire Forward Phase, 120V DL3E_ 1% Lutron® EcoSystem®, Fade EL10_ 1%, eldoLED ED01_ 0.1%, eldoLED DALI_ DALI Control	1 120V 2 277V	GC ⁴ Grid Ceiling Installation BH27 ⁵ 27" Solid Bars CB24 24" C-Channel Bars EM Emergency Battery Pack FS Fusing	AR2106XT	MW GW MB BZ CC ⁶	FG8WH Cased White Etched Glass		
	10L	1000 Lm							27K	2700K
	13L	1300 Lm							30K	3000K
	20L	2000 Lm							35K	3500K
	30L	3000 Lm							40K	4000K
	40L	4000 Lm								
	98 CRI									
	10L	1000 Lm							27HK	2700K
	13L	1300 Lm							30HK	3000K
	20L	2000 Lm							35HK	3500K
30L	3000 Lm	40HK	4000K							

EXAMPLE: SGV22XT13L35KE1GC/AR2106XTMWF8WH

NOTES:
 1 Nominal Source Lumens at Any CCT 2 Contact Factory for Additional Options 3 See Product Options Page for Details 4 No Bar Hangers Required 5 Standard Bar Hangers 6 Contact Factory for Special Finishes
 7 Contact Factory for Special Lenses/Louvers



PROJECT: _____
 TYPE: _____



Dimensions and values shown are nominal. Spectrum Lighting continually works to improve products and reserves the right to make changes which may alter the performance or appearance of products.