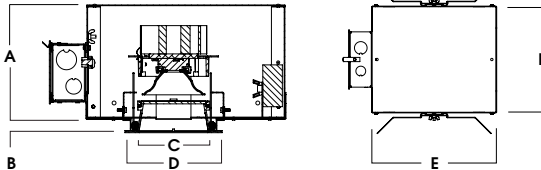
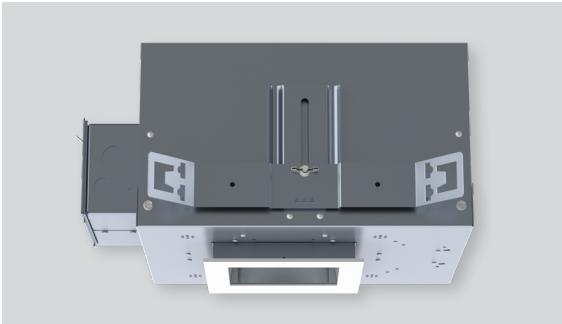
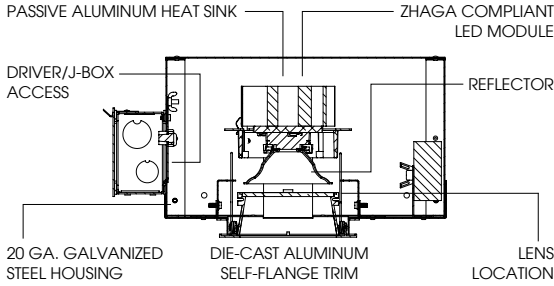




# 4" SQUARE IC WALL WASH XT SERIES / 2000 LUMENS MAX



A	B	C	D	E	F
6.4 162.6 mm	.625 15.2 mm	4.0 101.6 mm	5.4 137.2 mm	10L-13L: 13.2 20L: 19.2	9.5 241.3 mm

## SWFI4XT - TRIM FLANGE / IC RATED

### APPLICATION

Versatile 4" Square aperture recessed LED wall wash for Insulated Ceiling installations with a wide range of lumens and control options.

### FEATURES

Two-stage optical system for smooth light distribution and focus control. Quick change LED module with interchangeable optics for job site adjustment and fixture maintenance. Shallow plenum design. Tool-less driver and j-box access. Posi-lock trim retention torsion springs. See SWZI4 series for trimless plaster or wood ceiling.

### TRIM FINISH

A variety of architectural powdercoat and anodized finishes are available.

Matte white flange is standard.

### ELECTRONICS

LED system features Xicato LED module with proprietary phosphor technology that provides consistent, stable color with CCT control of +/- 100K over life of the light engine. Base CRI is 83 with 2-step MacAdam Ellipse binning. High CRI is 98 with 1x2-step MacAdam Ellipse binning. Variety of electronic 120V/277V and dimming drivers.

### CONSTRUCTION

Housing/frame constructed of #20 ga. galvanized steel to resist corrosion. Self-Flanged one piece trim die-cast high purity aluminum and finished to specification.

### CODE COMPLIANCE

BAA Compliant. IC rated. UL certified to meet US and Canadian standards. Suitable for dry or damp locations. Optional Wet location. Manufactured and tested to UL standards No. 1598/8750.

WATTAGE TO LUMENS UPDATE					
CURRENT PART NUMBER EXAMPLE	PREVIOUS PART NUMBER EXAMPLE	SOURCE LUMENS <sup>1</sup>	DELIVERED LUMENS <sup>2</sup>	SYSTEM WATTS	LPW
SWFI4XT10L	SWFI4LEDX115W	1000	686	11.1	61.8
SWFI4XT13L	SWFI4LEDX120W	1300	924	15.0	61.6
SWFI4XT20L	SWFI4LEDX133W	2000	1421	23.7	60.0

SERIES	LUMENS <sup>1</sup>	CCT	OPTICS	DRIVER / DIMMING / VOLTAGE <sup>3</sup>	OPTIONS <sup>4</sup>	TRIM	FINISH	TRIM OPTIONS <sup>11</sup>			
SWFI4XT	83 CRI		XW Extra Wide	<b>E</b> Electronic Driver <b>DS10_</b> 10% 0-10V <b>DO10_</b> 1% 0-10V <b>DS2W1</b> 1%, ELV/MLV, 120V <b>DLTE1</b> 1% Lutron® 2-Wire Forward Phase, 120V <b>DL3E_</b> 1% Lutron® EcoSystem®, Fade <b>EL10_</b> 1%, eldoLED <b>ED01_</b> 0.1%, eldoLED <b>DALI_</b> DALI Control	<b>1</b> 120V <b>2</b> 277V	<b>BH27<sup>5</sup></b> 27" Solid Bars <b>H12</b> 12" - 24" Expandable Bars <b>H06</b> 6" - 12" Expandable Bars <b>CB24</b> 24" C-Channel Bars <b>EMRM</b> Remote Emergency Battery Pack <b>FS</b> Fusing <b>EB</b> Black Housing <b>CR</b> Corrosion Resistant <b>PR<sup>6</sup></b> Deep Ceiling Extension <b>GR</b> Goof Ring <b>CCEA</b> Chicago Ceiling Plenum Rated <b>AMB</b> Anti Microbial Finish	<b>SW4FXT<sup>7</sup></b>	<b>MW<sup>8</sup></b> Matte White <b>MB</b> Matte Black <b>SG<sup>9</sup></b> Semi-Diffuse <b>HZ<sup>2</sup></b> Haze Full Diffuse <b>PT</b> Platinum Silver <b>BZ</b> Bronze <b>CH</b> Charcoal <b>AS</b> Anodic Sapphire <b>AM</b> Anodic Malachite <b>SN</b> Sun Gold <b>CO</b> Copper Metallic <b>GH</b> Graphite <b>AMB</b> Anti Microbial Finish <b>CC<sup>10</sup></b> Custom Color	<b>SKX<sup>12</sup></b> Linear Wall Wash Lens <b>SKW</b> Linear Wall Wash Lens Wet Location		
	10L	1000 Lm								27K	2700K
	13L	1300 Lm								30K	3000K
	20L	2000 Lm								35K	3500K
										40K	4000K
										40HK	4000K
	98 CRI										
	10L	1000 Lm	27HK	2700K							
	13L	1300 Lm	30HK	3000K							
	20L	2000 Lm	35HK	3500K							
			40HK	4000K							

**EXAMPLE:** SWFI4XT13L35KXWE1H12/SW4FXTMWSKX

**NOTES:**  
 1 Nominal Source Lumens at Any CCT 2 Nominal Delivered Lumens 83 CRI at Any CCT with XW-MW-SKX 3 Contact Factory for Additional Options 4 See Product Options Page for Details 5 Standard Bar Hangers 6 Contact Factory 7 "F" Indicates Self-Flange Trim, Matte White Standard 8 Standard Finish 9 Anodized Reflector with Matte White Flange 10 Contact Factory for Special Finishes 11 Contact Factory for Special Lens/Louvers 12 Standard Lens



PROJECT: \_\_\_\_\_  
 TYPE: \_\_\_\_\_



Dimensions and values shown are nominal. Spectrum Lighting continually works to improve products and reserves the right to make changes which may alter the performance or appearance of products.