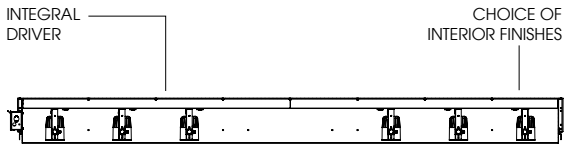


8" MODULAR CONTINUOUS SLOT ACCENT LIGHT

GRID CEILING / TRIMLESS

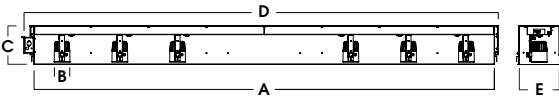
XT LED SERIES / MULTI-MODULE / 9 x 2000 LUMENS

multiple series



INDIVIDUAL MODULES ROTATE 359° / TILT 20° WITH 1" PULL-DOWN

INTERCHANGEABLE LED EMMITER/OPTICS



SERIES	#OF MODULES	A	B	C	D	E
RC896	6	95.6	3.0	8.1	98.6	8.4
RC8120	6	119.6	3.0	8.1	122.6	8.4
RC8144	9	143.6	3.0	8.1	146.6	8.4
RC8168	9	167.6	3.0	8.1	170.6	8.4
RC8192	9	191.6	3.0	8.1	194.6	8.4

RC8-LEDXT

APPLICATION

RC 8" series Continuous slot fixture for runs up to 16'. Designed for automotive and retail applications where crisp focused light and a finished ceiling design in desired.

FEATURES

Fixture available in five lengths with up to 9 modules and choice of 4 beam distributions. Fixture modules rotate 359°, lock and tilt to 20° with 1" pull-down for optimal aiming. Front loading lamp bezel accepts up to two lens/louver options. Designed to fit into Grid Ceiling.

FINISH

A variety of architectural powdercoat finishes for interior of fixture are available.

ELECTRONICS

LED system features Xicato LED module with proprietary phosphor technology that provides consistent stable color with CCT control of +/- 100K over life of the light engine. Base CRI is 83 with 2-step MacAdam Ellipse binning. High CRI is 98 with 1 x 2-step MacAdam Ellipse binning. Variety of electronic 120V/277V and dimming drivers.

CONSTRUCTION

Housing constructed of #.046 ga. galvanized steel and powdercoated to resist corrosion.

CODE COMPLIANCE

BAA Compliant. Non-IC rated. ETL certified to meet US and Canadian standards. Suitable for dry or damp locations. Manufactured and tested to UL standards No. 1598/8750.

LUMENS / WATTAGE DATA PER MODULE		
PART NUMBER	SOURCE LUMENS ¹	SYSTEM WATTS ²
RC896LEDXT10L	1000	9.1
RC896LEDXT13L	1300	13.0
RC896LEDXT20L	2000	21.7

Note: 98 CRI (Artist), 96 CRI (Vibrant), and 95 CRI (Beauty) each operate at higher wattage than 83 CRI. In order to have equivalent source lumens, comparatively, as listed below.

SERIES	LUMENS ¹	CCT	BEAM	DRIVER / VOLTAGE ⁵	OPTIONS ⁶	INTERIOR ⁸																																
RC896 6 Modules	LEDXT10L	1000 Lm	83 CRI	EX Electronic Driver, 120V/277V DS10X 10% 0-10V, 120V/277V DO10X 1% 0-10V, 120V/277V DS2W1 1%, ELV/MLV, 120V DLTE1 1%, Lutron® 2-Wire Forward Phase, 120V DL3EX 1% Lutron® EcoSystem® Fade, 120V/277V EL10X 1%, eldoLED, 120V/277V ED01X 0.1%, eldoLED, 120V/277V DALIX DALI Control, 120V/277V	<table border="1"> <tr><th colspan="2">LENS</th></tr> <tr><td>GL34</td><td>Clear</td></tr> <tr><td>FG34</td><td>Frosted</td></tr> <tr><td>SK34</td><td>Linear</td></tr> <tr><td>SO34</td><td>Solite Diffusion</td></tr> <tr><td>HL34</td><td>Hex Louver</td></tr> <tr><td>SN34</td><td>Snoot</td></tr> <tr><td>LN34⁷</td><td>Color Lens</td></tr> <tr><th colspan="2">OPTIONS</th></tr> <tr><td>FS</td><td>Fusing</td></tr> <tr><td>EMRM</td><td>Emergency Battery</td></tr> </table>	LENS		GL34	Clear	FG34	Frosted	SK34	Linear	SO34	Solite Diffusion	HL34	Hex Louver	SN34	Snoot	LN34 ⁷	Color Lens	OPTIONS		FS	Fusing	EMRM	Emergency Battery	<table border="1"> <tr><td>MWI</td><td>White</td></tr> <tr><td>MBI</td><td>Black</td></tr> <tr><td>PTI</td><td>Platinum</td></tr> <tr><td>BZI</td><td>Bronze</td></tr> <tr><td>CCI</td><td>Custom Color</td></tr> </table>	MWI	White	MBI	Black	PTI	Platinum	BZI	Bronze	CCI	Custom Color
	LENS																																					
	GL34	Clear																																				
FG34	Frosted																																					
SK34	Linear																																					
SO34	Solite Diffusion																																					
HL34	Hex Louver																																					
SN34	Snoot																																					
LN34 ⁷	Color Lens																																					
OPTIONS																																						
FS	Fusing																																					
EMRM	Emergency Battery																																					
MWI	White																																					
MBI	Black																																					
PTI	Platinum																																					
BZI	Bronze																																					
CCI	Custom Color																																					
LEDXT13L	1300 Lm	27K 2700K 30K 3000K 35K 3500K 40K 4000K	XN ⁴ 10° ND 26° MD 48° WD 60°																																			
LEDXT20L	2000 Lm	98 CRI ARTIST 27HK 2700K 30HK 3000K 35HK 3500K 40HK 4000K																																				
RC8120 6 Modules																																						
RC8144 9 Modules																																						
RC8168 9 Modules																																						
RC8192 9 Modules																																						

EXAMPLE: RC896LEDXT10L35KMDEXSO34MWWI

NOTES:
 1 Nominal Source Lumens at Any CCT - Per Module 2 One Module 83 CRI, No Thermal Protector 3 XN Beam N/A 4 9mm, N/A for Beauty, All XN Draw More Watts Than Other Beams; See Photometry 5 Contact Factory for Additional Options 6 See Product Options Page for Details 7 See Lens Options Page for Details 8 See Color Page for More Options/Consult Factory for Special Finishes



PROJECT: _____
 TYPE: _____



Dimensions and values shown are nominal. Spectrum Lighting continually works to improve products and reserves the right to make changes which may alter the performance or appearance of products.

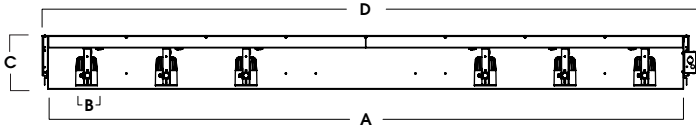
**8" MODULAR CONTINUOUS SLOT ACCENT LIGHT
GRID CEILING / TRIMLESS**

XT LED SERIES / MULTI-MODULE / 9 x 2000 LUMENS

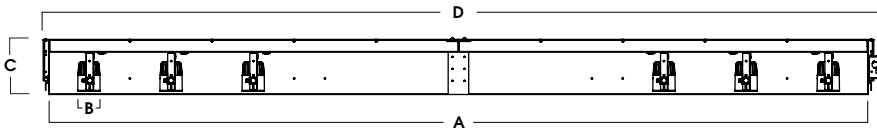
RC series



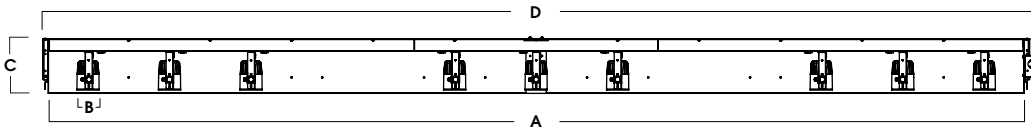
RC896 - 6 LED MODULES



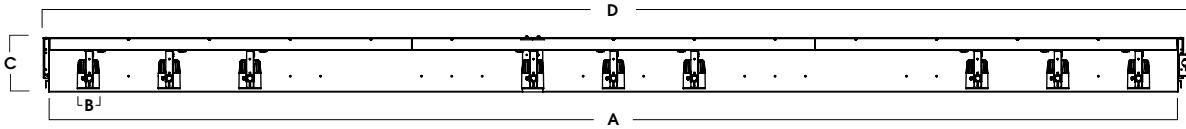
RC8120 - 6 LED MODULES



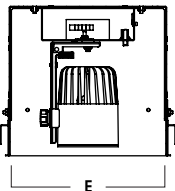
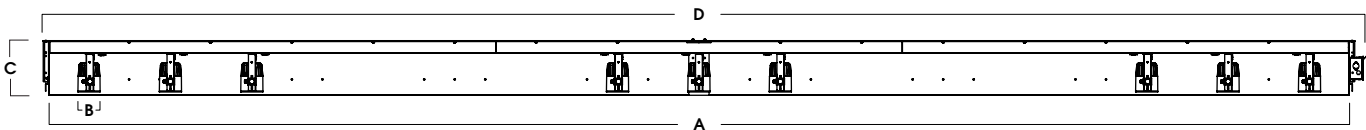
RC8144 - 9 LED MODULES



RC8168 - 9 LED MODULES



RC8192 - 9 LED MODULES



SERIES	#OF MODULES	A	B	C	D	E
RC896	6	95.6	3.0	8.1	98.6	8.4
RC8120	6	119.6	3.0	8.1	122.6	8.4
RC8144	9	143.6	3.0	8.1	146.6	8.4
RC8168	9	167.6	3.0	8.1	170.6	8.4
RC8192	9	191.6	3.0	8.1	194.6	8.4