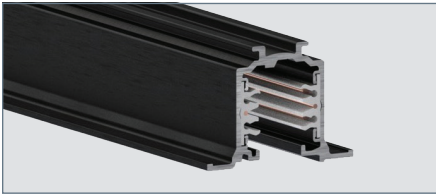




# OT/HOT ARCHITECTURAL TRACK & ACCESSORIES

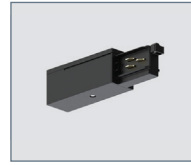
RECESSED - 120V or 277V - 2 CIRCUIT / 2 NEUTRAL 0-10V CONTROL



## OT/HOT TRACK

Flush to ceiling One Track recessed track system for drywall installation. 0-10V or DALI controllability. Specify 120V or 277V systems.

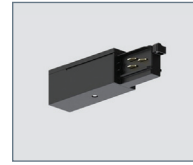
- OTR2W4** - 4' Track, 120V, White
- OTR2W4** - 4' Track, 277V, White
- OTR2W8** - 8' Track, 120V, White
- HOTR2W8** - 8' Track, 277V, White
- OTR2B4** - 4' Track, 120V, Black
- HOTR2B4** - 4' Track, 277V, Black
- OTR2B8** - 8' Track, 120V, Black
- HOTR2B8** - 8' Track, 277V, Black



## END-FEED\*

Polarity Right / Ground Left

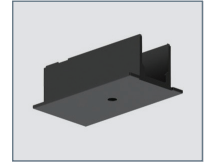
- OTO1W2** - 120V, White
- HOT01W2** - 277V, White
- OTO1B2** - 120V, Black
- HOT01B2** - 277V, Black



## END-FEED\*

Polarity Left / Ground Right

- OTO2W2** - 120V, White
- HOT02W2** - 277V, White
- OTO2B2** - 120V, Black
- HOT02B2** - 277V, Black



## RECESSED COVER FOR END-FEED

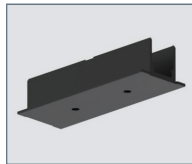
- OTC01W** - 120V/277V, White
- OTC01B** - 120V/277V, Black



## MIDDLE FEED\*

Polarity Ridge

- OT10W2** - 120V, White
- HOT10W2** - 277V, White
- OT10B2** - 120V, Black
- HOT10B2** - 277V, Black



## RECESSED COVER FOR MIDDLE FEED

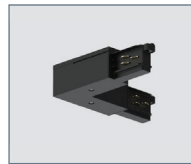
- OTC10W** - 120V/277V, White
- OTC10B** - 120V/277V, Black



## "L" FEED\*

Polarity Interior / Ground Exterior

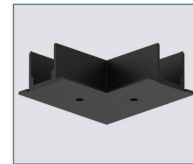
- OT11W2** - 120V, White
- HOT11W2** - 277V, White
- OT11B2** - 120V, Black
- HOT11B2** - 277V, Black



## "L" FEED\*

Polarity Exterior / Ground Interior

- OT12W2** - 120V, White
- HOT12W2** - 277V, White
- OT12B2** - 120V, Black
- HOT12B2** - 277V, Black



## RECESSED COVER FOR "L" FEED

- OTC11W** - 120V/277V, White
- OTC11B** - 120V/277V, Black



## "T" FEED\*

Polarity Exterior Left / Ground Interior Right

- OT13W2** - 120V, White
- HOT13W2** - 277V, White
- OT13B2** - 120V, Black
- HOT13B2** - 277V, Black



## "T" FEED\*

Polarity Interior Right / Ground Interior Left

- OT14W2** - 120V, White
- HOT14W2** - 277V, White
- OT14B2** - 120V, Black
- HOT14B2** - 277V, Black



## "T" FEED\*

Polarity Interior Left / Ground Exterior Right

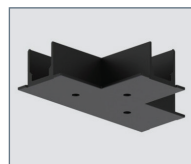
- OT15W2** - 120V, White
- HOT15W2** - 277V, White
- OT15B2** - 120V, Black
- HOT15B2** - 277V, Black



## "T" FEED\*

Polarity Interior Right / Ground Exterior Left

- OT16W2** - 120V, White
- HOT16W2** - 277V, White
- OT16B2** - 120V, Black
- HOT16B2** - 277V, Black



## RECESSED COVER FOR "T" FEED

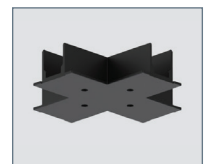
- OTC13W** - 120V/277V, White
- OTC13B** - 120V/277V, Black



## "X" FEED\*

Not to be used with trimless track

- OT17W2** - 120V, White
- HOT17W2** - 277V, White
- OT17B2** - 120V, Black
- HOT17B2** - 277V, Black



## RECESSED COVER FOR "X" FEED

- OTC17W** - 120V/277V, White
- OTC17B** - 120V/277V, Black

\*RECESSED COVER IS REQUIRED AND PURCHASED SEPARATELY



# OT/HOT ARCHITECTURAL TRACK & ACCESSORIES

RECESSED - 120V or 277V - 2 CIRCUIT / 2 NEUTRAL 0-10V CONTROL



### JOINTING CONNECTOR

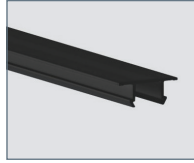
Polarity Ridge

- OT03W** - 120V, White
- HOT03W** - 277V, White
- OT03B** - 120V, Black
- HOT03B** - 277V, Black



### END CAP FOR TRACK WITH LOCKING SCREW

- OT04RW** - 120V, White
- OT04RB** - 120V, Black



### ADDITIONAL COVER STRIP FOR TRACK

- OTGPW4** - 4', 120V/277V, White
- OTGPB4** - 4', 120V/277V, Black
- OTGPW8** - 8', 120V/277V, White
- OTGPB8** - 8', 120V/277V, Black



### SWAG HOOK

- OTHW** - 120V/277V, White
- OTHB** - 120V/277V, Black



### CUTTING TOOL FOR TRACK CONDUCTORS

- OTT** - Cutting Tool For Track Conductors