



DECORATIVE

**ORION PENDANT**  
**DAMP LOCATION**  
 DOMO SHADES

PROJECT: \_\_\_\_\_

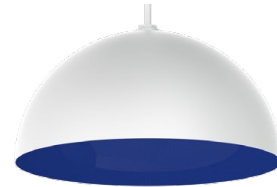
QUANTITY: \_\_\_\_\_ TYPE: \_\_\_\_\_



ON1606GV  
 GH - Graphite  
 TQI - Turquoise Interior



ON1606GV  
 EG - Evergreen  
 ALI - Almond Interior



ON2412GV  
 MW - Matte White  
 BL - Blue Streak Interior



ON3012GV  
 MW - Matte White  
 BZI - Bronze Interior

SERIES	LUMENS <sup>1</sup>	CCT	DRIVER / DIMMING <sup>2</sup>	MOUNTING <sup>3</sup>	CORD OPTIONS	INTERIOR <sup>10</sup>	FINISH <sup>10</sup>
ON1606GV	15L 1500 Lm	27K 2700K	EX <sup>3</sup> Electronic Driver, 120V/277V	RDC5 <sup>3/4</sup> Small Driver Canopy	STANDARD CORDS <b>CW</b> White <b>CB</b> Black <b>CS</b> Silver	<b>MW</b> <sup>11</sup> Matte White <b>CCI</b> Custom Color <b>FCI</b> Fixture Color Interior  See Page 5 for Full Range of Color Options (83-90080)	<b>MW</b> <sup>11</sup> Matte White <b>MB</b> <sup>11</sup> Matte Black <b>PT</b> <sup>11</sup> Platinum Silver <b>CC</b> Custom Color  See Page 5 for Full Range of Color Options (83-90080)
ON2412GV	27L 2700 Lm	30K 3000K	DO10X <sup>3</sup> 1%, 0-10V, 120V/277V	CP13 <sup>4/5</sup> Large Driver Canopy			
ON3012GV	37L 3700 Lm 55L 5500 Lm	35K 3500K 40K 4000K	DS2W1 <sup>4</sup> ELV / MLV, 120V DLTE1 <sup>5</sup> Lutron® 2-Wire Forward Phase (MLV), 120V DL3EX <sup>5</sup> 1%, Lutron® EcoSystem®, Fades to Black, 120V/277V	<b>HM</b> <sup>7</sup> Hang Straight <b>AT</b> <sup>7</sup> Hang Straight All Thread <b>PM</b> <sup>7</sup> Rigid Pendant Mount <b>CD</b> <sup>7</sup> Cord / Cable Mount <b>CM</b> <sup>7</sup> Cord Mount <b>EMCR</b> <sup>8</sup> 10W Canopy Mounted EM <b>EMRM</b> 7W Remote EM <b>EMEN</b> 7W Remote with Enclosure			

EXAMPLE: ON1606GV15L30KEX/RDC5CD36ORIMW

**NOTES:**  
 1 Nominal Source Lumens at 35K 2 Contact Factory for Additional Options 3 RDC5 for EX/DO10X Drivers 4 37L Max with RDC5, 55L Max with CP13 5 CP13 for Lutron Drivers  
 6 See Mounting Page for Details on Components and Finishes 7 Specify Length in Inches; See Mounting Page for Available Lengths 8 EMCR Replaces RDC5 or CP13  
 9 Decorative Cord 120" Max Length 10 See Color Page for More Options/Consult Factory for Special Finishes 11 Standard Finishes





# ORION PENDANT

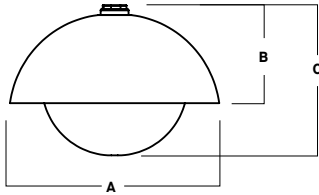
## DAMP LOCATION

### DOMO SHADES / FIXTURE OPTIONS

LUMENS / WATTAGE DATA				
PART NUMBER	SOURCE LUMENS <sup>1</sup>	DELIVERED LUMENS <sup>2</sup>	SYSTEM WATTS	LPW
ON1612GV15L	1500	1130	10	113
ON1612GV27L	2700	1974	18	110
ON1612GV37L	3700	2895	26	111
ON1612GV55L	5500	4264	39	109

<sup>1</sup> Nominal Source Lumens at 35K    <sup>2</sup> Nominal Delivered Lumens at 35K with MW

## HOUSING DIMENSIONS



Dimensioned with **ON1606GV**

SERIES	A	B	C
ON1606GV	15.7	7.0	10.8
ON2412GV	24.0	12.7	N/A
ON3012GV	30.4	12.3	N/A

## APPLICATION

Orion hemisphere pendant for decorative area lighting.

## FEATURES

SpecLume series fixtures offer contemporary style with functional luminaire performance. All fixtures are designed and manufactured in our factory. LED Driver in canopy for thermal management. A variety of mounting options are available. Features high profile frosted glass diffuser over LEDs which eliminates direct source visibility.

## FINISH

Multi-stage polyester powder-coat process applied on our dedicated paint lines. See mounting and color pages for standard finishes. Interior is Matte White unless specified. Custom Color interior finish available.

## ELECTRONICS

GV LED system features high brightness white Samsung LED's. 3-step MacAdam Ellipse binning. Standard CRI: 80+. Higher CRI, R9 and custom LED configurations are available; consult factory. Variety of electronic 120V/277V and dimming drivers.

## CONSTRUCTION

Fixtures are spun in our factory from 0.080 high purity aluminum. Cast aluminum heat sink for optimal thermal management. Diffuser is frosted formed glass.

## CODE COMPLIANCE

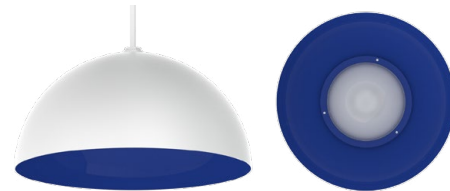
BAA compliant. ETL certified to meet US and Canadian standards. Suitable for dry or damp locations. Manufactured and tested to UL standards No. 1598/8750.

## SERIES SIZES

ON1606GV

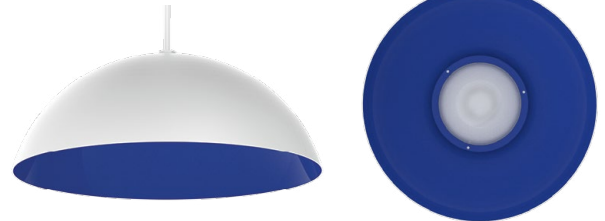


ON2412GV



GLOBE HIDDEN IN THIS VIEW

ON3012GV



GLOBE HIDDEN IN THIS VIEW

## CEILING MOUNT

(SEE MOUNTING PAGES FOR MORE OPTIONS & CANOPY DIMENSIONS.)

### HM / AT / PM

HANG STRAIGHT / ALL THREAD / PENDANT



ON1606GV SHOWN WITH RDC5PM

### CD

CORD / CABLE MOUNT



ON1606GV SHOWN WITH RDC5CD

### CM

CORD MOUNT



ON1606GV SHOWN WITH RDC5CM





# ORION PENDANT DAMP LOCATION DOMO SHADES / PHOTOMETRIC DATA

DECORATIVE

ON1606GV-55L-35K-EX-MWI

CANDLEPOWER CURVE	INTENSITY	ZONAL LUMENS	SINGLE UNIT: PERFORMANCE INITIAL FOOTCANDLES BASED ON IES BEAM ANGLE				MULTIPLE UNITS: PERFORMANCE 80/50/20% REFLECTANCES INITIAL FOOTCANDLES AND WATTS PER SQUARE FOOT									
			Mounting Height AFF	FC at Center on Floor	Beam Diameter	FC at Beam Edge	Ceiling Height	Fixture Spacing	RCR 1		RCR 3					
	0.00°		0° - 10°	122	3%	8.0'	20 fc	30.4'	3 fc	17'	16'	16	0.14	9	0.11	
	0.00° 1,270		0° - 20°	468	11%	10.0'	13 fc	38.0'	2 fc	21'	18"	14	0.13	11	0.13	
	5.00° 1,269		0° - 30°	1,003	24%	12.0'	9 fc	45.6'	1 fc	25'	20"	11	0.10	7	0.08	
	10.00° 1,259		0° - 40°	1,672	39%	14.0'	6 fc	53.2'	1 fc	Delivered Illuminance Rating: (DIR)						
	15.00° 1,239		0° - 60°	3,096	73%	16.0'	5 fc	60.7'	1 fc	108 FC per W/Sq. Ft.						
	20.00° 1,207		0° - 80°	4,007	94%	20.0'	3 fc	75.9'	0 fc	81 FC per W/Sq. Ft.						
	30.00° 1,124		0° - 90°	4,175	98%	24.0'	2 fc	91.1'	0 fc	3' Suspension Length						
	40.00° 1,020		Total	4,263	100%	28.0'	2 fc	106.3'	0 fc	Square rooms used for multiple units: - RCR 1: Length & Width = Ceiling Ht. - 5.5' x 10.00 - RCR 3: Length & Width = Ceiling Ht. - 5.5' x 3.33 * Average Footcandles at 2.5' Above Floor * Exceeds spacing criteria by 6% ** Exceeds spacing criteria by -11% *** Exceeds spacing criteria by -22%						
	50.00° 870	CP at 0deg (Nadir): 1,270				Beam Angle: 124.28				Lamp Multiplier: 15L x 0.26, 27L x 0.46, 37L x 0.68						
	60.00° 677	CRI: 80+				Spacing Ratio: 1.31				CCT Multiplier: 27K x 0.971, 30K x 0.985, 40K x 1.03						
	70.00° 438															
	80.00° 220															
	90.00° 92															

Delivered Lumens: 4,263  
Luminaire Watts: 39  
LER: 109.31

ON2412GV-55L-35K-EX-MWI

CANDLEPOWER CURVE	INTENSITY	ZONAL LUMENS	SINGLE UNIT: PERFORMANCE INITIAL FOOTCANDLES BASED ON IES BEAM ANGLE				MULTIPLE UNITS: PERFORMANCE 80/50/20% REFLECTANCES INITIAL FOOTCANDLES AND WATTS PER SQUARE FOOT									
			Mounting Height AFF	FC at Center on Floor	Beam Diameter	FC at Beam Edge	Ceiling Height	Fixture Spacing	RCR 1		RCR 3					
	0.00°		0° - 10°	156	4%	8.0'	25 fc	20.8'	9 fc	17'	16'	15	0.14	9	0.11	
	0.00° 1,632		0° - 20°	596	15%	10.0'	16 fc	25.9'	6 fc	21'	18"	14	0.13	11	0.13	
	5.00° 1,619		0° - 30°	1,266	32%	12.0'	11 fc	31.1'	4 fc	25'	20"	11	0.10	7	0.08	
	10.00° 1,592		0° - 40°	2,095	53%	14.0'	8 fc	36.3'	3 fc	Delivered Illuminance Rating: (DIR)						
	15.00° 1,556		0° - 60°	3,534	89%	16.0'	6 fc	41.5'	2 fc	105 FC per W/Sq. Ft.						
	20.00° 1,513		0° - 80°	3,947	99%	20.0'	4 fc	51.9'	1 fc	84 FC per W/Sq. Ft.						
	30.00° 1,404		0° - 90°	3,980	100%	24.0'	3 fc	62.3'	1 fc	3' Suspension Length						
	40.00° 1,254	CP at 0deg (Nadir): 1,632				Beam Angle: 103.81				Square rooms used for multiple units: - RCR 1: Length & Width = Ceiling Ht. - 5.5' x 10.00 - RCR 3: Length & Width = Ceiling Ht. - 5.5' x 3.33 * Average Footcandles at 2.5' Above Floor * Exceeds spacing criteria by 10% ** Exceeds spacing criteria by -9% *** Exceeds spacing criteria by -19%						
	50.00° 931	CRI: 80+				Spacing Ratio: 1.27				Lamp Multiplier: 15L x 0.26, 27L x 0.46, 37L x 0.68						
	60.00° 435									CCT Multiplier: 27K x 0.971, 30K x 0.985, 40K x 1.03						
	70.00° 192															
	80.00° 80															
	90.00° 1															

Delivered Lumens: 3,980  
Luminaire Watts: 39  
LER: 102.05

ON3012GV-55L-35K-EX-MWI

CANDLEPOWER CURVE	INTENSITY	ZONAL LUMENS	SINGLE UNIT: PERFORMANCE INITIAL FOOTCANDLES BASED ON IES BEAM ANGLE				MULTIPLE UNITS: PERFORMANCE 80/50/20% REFLECTANCES INITIAL FOOTCANDLES AND WATTS PER SQUARE FOOT									
			Mounting Height AFF	FC at Center on Floor	Beam Diameter	FC at Beam Edge	Ceiling Height	Fixture Spacing	RCR 2		RCR 4					
	0.00°		0° - 10°	161	4%	6.0'	47 fc	16.0'	15 fc	14'	12"	27	0.28	21	0.28	
	0.00° 1,703		0° - 20°	601	15%	8.0'	27 fc	21.4'	9 fc	18'	14"	21	0.21	10	0.14	
	5.00° 1,687		0° - 30°	1,255	31%	10.0'	17 fc	26.7'	6 fc	22'	16"	12	0.13	14	0.18	
	10.00° 1,635		0° - 40°	2,050	50%	12.0'	12 fc	32.0'	4 fc	Delivered Illuminance Rating: (DIR)						
	15.00° 1,571		0° - 60°	3,605	89%	14.0'	9 fc	37.4'	3 fc	96 FC per W/Sq. Ft.						
	20.00° 1,502		0° - 80°	4,036	99%	16.0'	7 fc	42.7'	2 fc	77 FC per W/Sq. Ft.						
	30.00° 1,352		0° - 90°	4,064	100%	20.0'	4 fc	53.4'	1 fc	2' Suspension Length						
	40.00° 1,195	CP at 0deg (Nadir): 1,703				Beam Angle: 108.52				Square rooms used for multiple units: - RCR 2: Length & Width = Ceiling Ht. - 4.5' x 5.00 - RCR 4: Length & Width = Ceiling Ht. - 4.5' x 3.33 * Average Footcandles at 2.5' Above Floor * Exceeds spacing criteria by 7% ** Exceeds spacing criteria by -12% *** Exceeds spacing criteria by -23%						
	50.00° 1,004	CRI: 80+				Spacing Ratio: 1.18				Lamp Multiplier: 15L x 0.26, 27L x 0.46, 37L x 0.68						
	60.00° 562									CCT Multiplier: 27K x 0.971, 30K x 0.985, 40K x 1.03						
	70.00° 182															
	80.00° 62															
	90.00° 1															

Delivered Lumens: 4,064  
Luminaire Watts: 39  
LER: 104.21



# MOUNTING & ACCESSORIES

SOME OPTIONS NOT AVAILABLE ON ALL FIXTURES. CONSULT SPECIFICATION SHEETS. SEE INDIVIDUAL SPECIFICATION SHEETS OR CONSULT FACTORY FOR ADDITIONAL INFORMATION.  
NOTE: THIS IS TYPICAL OF SPECLUME SPECIFICATION FOR PENDANT MOUNTING. INDIVIDUAL FIXTURES OR PROJECTS MAY HAVE SPECIALIZED REQUIREMENTS.



## CEILING MOUNTING

<p><b>RDC5</b> - SMALL DRIVER CANOPY (STANDARD) MOUNTS TO 4" OCTO J-BOX</p> <p><b>CP13</b> - LARGE DRIVER CANOPY</p>	<p><b>HM*</b> HANG STRAIGHT 45° SWIVEL 1/2" STEM - 3/8" NPT</p> <p>ORDER: <b>HM</b> (Length) SPECIFY LENGTH: HM3 - 3"    HM24 - 24" HM6 - 6"    HM36 - 36" HM12 - 12"    HM48 - 48" HM18 - 18"    HM72 - 72" <b>HMLC(XX)</b> Custom Length (Specify in Inches)</p>	<p><b>AT**</b> HANG STRAIGHT ALL THREAD 45° SWIVEL 1/2" STEM - 1/4" IP</p> <p>ORDER: <b>AT</b> (Length) SPECIFY LENGTH: AT12 - 12"    AT48 - 48" AT24 - 24"    AT60 - 60" AT36 - 36"    AT72 - 72"</p> <p><small>FIELD CUT THREADED PIPE TO LENGTH WISHED. CUT PIPE COVER 3/16" SHORTER THAN THREADED PIPE. SLIP PIPE COVER OVER THREADED PIPE.</small></p>	<p><b>PM*</b> RIGID PENDANT MOUNT RIGID 1/2" STEM - 3/8" NPT</p> <p>ORDER: <b>PM</b> (Length) SPECIFY LENGTH: PM3 - 3"    PM24 - 24" PM6 - 6"    PM36 - 36" PM12 - 12"    PM48 - 48" PM18 - 18"    PM72 - 72" <b>PMLLC(XX)</b> Custom Length (Specify in Inches)</p>	<p><b>CD</b> CORD / CABLE MOUNT SJ CORD WITH 1/16 SS CABLE</p> <p>ORDER: <b>CD</b> (Length) SPECIFY LENGTH: CD36 - 36" CD72 - 72" CD144 - 144" <b>CDLC(XX)</b> Custom Length (Specify in Inches)</p>	<p><b>CM</b> CORD MOUNT SJ CORD WITH STRAIN RELIEF</p> <p>ORDER: <b>CM</b> (Length) SPECIFY LENGTH: CM36 - 36" CM72 - 72" CM144 - 144" <b>CMLC(XX)</b> Custom Length (Specify in Inches)</p>
--	--	---	--	--	--

\*MAXIMUM ONE PIECE STEM LENGTH IS 72". \*\*MAXIMUM ONE PIECE STEM LENGTH IS 36". LONGER LENGTHS ARE POSSIBLE USING MULTIPLE STEMS AND COUPLERS.  
\*\*ORDER IN 12" INCREMENTS, ODD SIZES MAY BE FIELD CUT

## EMERGENCY BATTERY OPTIONS

**EMCR** - LARGE DRIVER CANOPY FOR LOW EMERGENCY BATTERY  
(FOR ROUND CEILING MOUNT TYPES)

## REMOTE EMERGENCY BATTERY OPTIONS

<p><b>EMRM*</b> - 7W REMOTE EMERGENCY BATTERY (50' MAX)</p> <table border="1"> <thead> <tr> <th>A</th> <th>B</th> <th>C</th> </tr> </thead> <tbody> <tr> <td>1.3</td> <td>12.6</td> <td>13.0</td> </tr> </tbody> </table>	A	B	C	1.3	12.6	13.0	<p><b>EMEN*</b> - 7W REMOTE EMERGENCY BATTERY WITH ENCLOSURE (50' MAX)</p> <table border="1"> <thead> <tr> <th>A</th> <th>B</th> <th>C</th> </tr> </thead> <tbody> <tr> <td>2.0</td> <td>17.0</td> <td>6.2</td> </tr> </tbody> </table>	A	B	C	2.0	17.0	6.2
A	B	C											
1.3	12.6	13.0											
A	B	C											
2.0	17.0	6.2											

\*OTHER EM BATTERY SIZES AVAILABLE, CONSULT FACTORY



# COLOR OPTIONS - POWDER COAT PAINT FINISHES



## STANDARD CORD / STEM / CANOPY FINISHES

FIXTURE COLOR	STANDARD CORD COLOR	STANDARD CANOPY / STEM COLOR
Matte White, Textured White	Matte White	Matte White
Gloss White	Matte White	Gloss White
Matte Black, Gloss Black, Textured Black	Matte Black	Matte Black
All Others	Matte Black	Same Color as Fixture
Custom Color	Contact Factory	Contact Factory

## PAINT TIMES

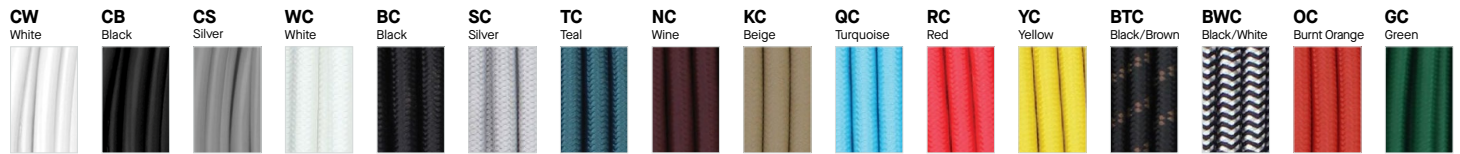
TIER	COST	PAINT TIME*
Tier 1 - Standard Finishes	\$	⌚
Tier 2 - Typical Finishes	\$\$	⌚⌚
Tier 3 - Special Metal Finishes	\$\$\$	⌚⌚⌚
Custom Color	Contact Factory	Contact Factory

\*CONTACT FACTORY FOR SPECIFIC PRODUCT LEAD TIMES

## CORD OPTIONS

STANDARD VINYL CORDS

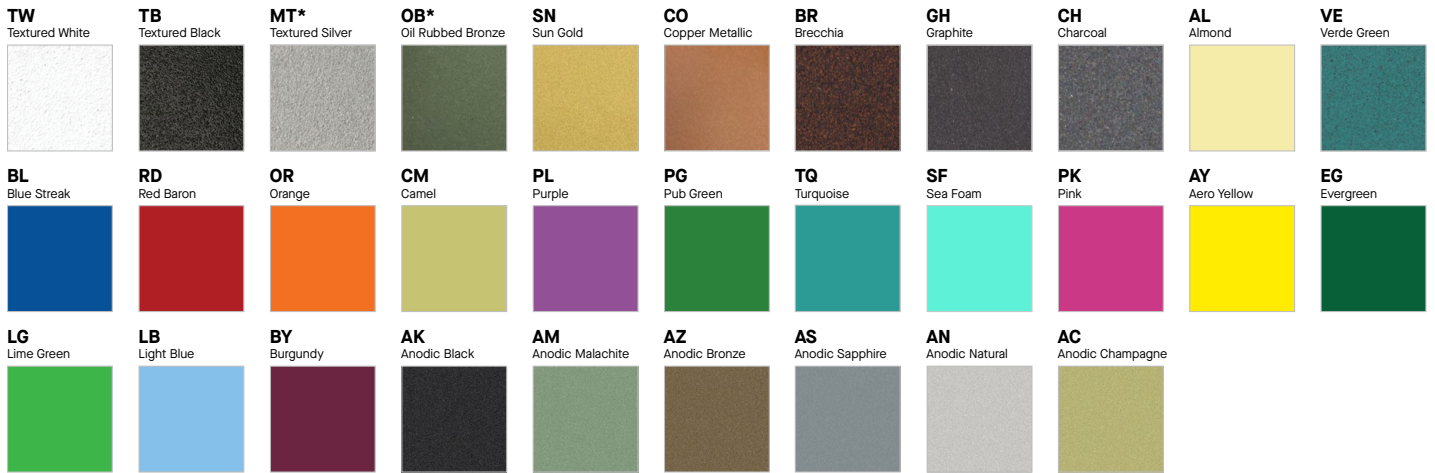
DECORATIVE BRAIDED COLOR CORDS



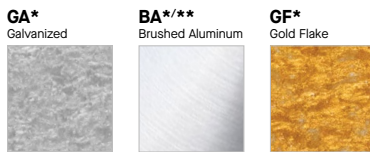
## TIER 1 - STANDARD FINISHES



## TIER 2 - TYPICAL FINISHES



## TIER 3 - SPECIAL METAL FINISHES



## CUSTOM COLOR FINISHES

CONTACT FACTORY

**CC**  
Custom Color



\*UNAVAILABLE FOR WET LOCATION

\*\* UNAVAILABLE FOR INTERIOR

