



3" SQUARE SUPER SHALLOW 1000 LUMENS MAX

UNIVERSAL HOUSINGS WITH INTERCHANGEABLE TRIMS

Spectrum's A Spec 3" recessed square downlight series features a super shallow plenum housing and variety of trims for accent and general illumination.

LUMENS AND WATTAGE CHART					
PART NUMBER	LUMENS	SOURCE LUMENS ¹	DELIVERED LUMENS ²	SYSTEM WATTS	LPW
SDSS3F	XT10L 80D	1000	660	11.1	59
SDSS3F	XT13L 80D	1300	892	15.0	59

PROJECT: _____
TYPE: _____



AVAILABLE HOUSING TYPES

SS3SMO - New Construction / 13L Max



SS3SMI - IC New Construction / 13L Max



SS3SMR - Remodel Construction / 13L Max



FIXTURE HOUSING SPECIFICATION

SERIES		LUMENS ¹		DRIVER / DIMMING / VOLTAGE			OPTIONS		
SS3SMO	New Construction	XT10L	1000 Lm	E	Electronic Driver	1	120V	H12	12" - 24" Expandable Bars
SS3SMI	IC New Construction	XT13L	1300 Lm	DS10	10%, 0-10V	2	277V	H06	6" - 12" Expandable Bars
SS3SMR	Remodel Construction			DO10	1%, 0-10V			BH27	27" Solid Bars
				DS2W1	ELV/MLV, 120V			CB24	24" C-Channel Bars
				DLTE1	1% Lutron® 2-Wire Forward Phase, 120V			CH24	24" Chicago Bars
				DL3E	1% Lutron® EcoSystem® Fade			FS	Fusing
				EL10	1%, eldoLED			EM³	Integral Emergency Battery
				ED01	0.1%, eldoLED			EMRM	Remote Emergency Battery Pack
				BLU	Bluetooth LE			EB	Black Housing
								PR2⁴	2" Thick Ceiling Adaptor

- Die-cast aluminum trim with a wide variety of options.
- Super Shallow plenum housing.
- Performance Xicato LED module for superior reliability and color consistency.
- Large selection of dimming and control options.
- Interchangeable optics and lenses.
- See SS3 for shallow plenum and SS3D for 1" deep regress trim.
- 5 year warranty on fixture and electronics.
- 10 year warranty on LED CCT.
- Bluetooth LE option.
- Sustainable fixture.
- Zhaga International Standard LED Module for future upgrades.
- 83CRI 2SDCM, 98CRI 1x2SDCM best in industry.

AVAILABLE TRIM / MODULE TYPES



TRIM / MODULE SPECIFICATION

TRIM		CCT		OPTICS		FINISH ⁵		OPTIONS					
SDSS3F	Downlight	83 CRI		80D	77°	MW⁶	Matte White	NL	No Lens				
		27K	2700K							MB	Matte Black		
		30K	3000K									PT	Platinum Silver
		35K	3500K										
40K	4000K	CH	Charcoal										
98 CRI ARTIST				OB	Oil Rubbed Bronze	AS	Sapphire	WL	Wet Location				
27HK	2700K									AM	Malachite		
30HK	3000K											SN	Sun Gold
35HK	3500K	CO	Copper Metallic										
40HK	4000K			GH	Graphite								
						CC⁷	Custom Color	PR2⁴	2" Thick Ceiling Adaptor				
										WF²	White Flange		

EXAMPLE: SS3SMOXT10LDS2W1/H12/SDSS3F27K80DMW5O

NOTES:
 1 Nominal Source Lumens at Any CCT 2 Nominal Delivered Lumens 83 CRI at Any CCT with MW-SO Trim 3 Not Available with IC 4 Contact Factory 5 Inside Trim And Flange Will Match Color Specified 6 Standard Finish
 7 Contact Factory for Special Finishes 8 Standard Lens to Achieve Listed Beam Angle 9 Otherwise Flange Is Same Color As Interior Of Trim



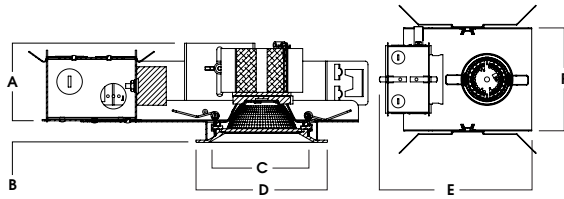
Dimensions and values shown are nominal. Spectrum Lighting continually works to improve products and reserves the right to make changes which may alter the performance or appearance of products.



HOUSING DIMENSIONS

SS3SMO - NEW CONSTRUCTION / 13L MAX

Non-IC rated, thermally protected frame-in kit for new construction. Non-IC designation requires insulation must be minimum of 3" from housing.



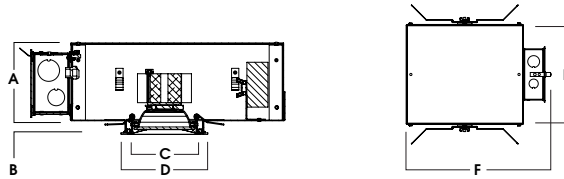
A	B	C	D	E	F
2.7	0.6	3.8	4.5	10.8	7.6
68.6 mm	15.2 mm	96.5 mm	114.3 mm	274.3 mm	193.0 mm

Fixture Weight: 4.0 lbs

Ceiling Cutout: 4.12 Sq

SR3SMI - IC NEW CONSTRUCTION / 13L MAX

IC rated frame-in kit for new construction with direct insulation contact and CCEA (Chicago Plenum) compatibility.



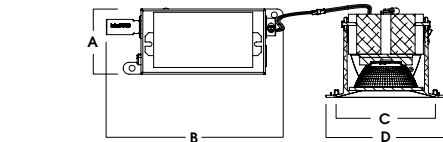
A	B	C	D	E	F
4.0	.625	3.8	4.5	9.5	13.2
101.6 mm	15.9 mm	96.5 mm	114.3 mm	241.3 mm	335.3 mm

Fixture Weight: 4.0 lbs

Ceiling Cutout: 4.12 Sq

SS3SMR - REMODEL CONSTRUCTION / 13L MAX

Non-IC rated frame-in kit for existing construction. Non-IC designation requires insulation must be minimum of 3" from housing.



A	B	C	D
2.8	7.5	3.8	4.5
71.1 mm	190.5 mm	96.5 mm	114.3 mm

Fixture Weight: 2.0 lbs

Ceiling Cutout: 4" Sq

FEATURES

FRAME-IN KIT

Precision Die-formed 20 gauge galvanized steel housing and integral junction box with (3) 5/8", (3) 7/8" and (2) 1 1/8" knockouts. Junction box capacity: 8 12AWG rated for 90 °C. Tool-less driver and junction box access for ease of maintenance. Post-loc trim retention springs for 5/8"-1" ceiling thickness. Use PR2 for up to 2" thick ceiling. For thicker ceilings consult factory.

MOUNTING

A variety of mounting bars are available (excluding remodel). Ceiling materials must be rigid to support luminaire frame.

DRIVER

Several constant current dimming drivers are available. Power factor >.9 typical, 50/60Hz, 350-1050mA.

TRIM

Self-flanged, one-piece, die-cast aluminum finished in a variety of powdercoat options. Inside trim and flange are finished in same color unless otherwise specified (WF= White Flange). For trimless options see N-Line.

REMODEL

Features tethered power supply and junction box with sheathed wire.

LUMEN OUTPUT

77° optics with 1300 Lumens max.

LED

Zhaga compatible high performance Xicato module. Proprietary phosphor technology provides consistent and stable color with CCT control of +/- 100K over life of light engine.

EMERGENCY

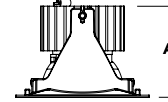
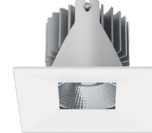
Integral or remote 7W emergency battery options are available. Operates for 90 minutes and produces nominal 450 lumens.

BLUETOOTH

Integral Bluetooth LE option is available for dimming to .1%, grouping, remote access, electrical feedback and beacon technology.

TRIM / MODULE DATA

SDSS3F - DOWNLIGHT MODULE



Lm	A
XT10L	3.3
XT13L	3.3



PHOTOMETRIC DATA - 3" SQUARE SUPER SHALLOW

SS3SM-XT-13L-E1-SDSS3F-xxK-80D-MW-SO

CANDLEPOWER CURVE TEST SP-00530_2_M-XT13L	INTENSITY CANDELA 0° AZIMUTH	ZONAL LUMENS		SINGLE UNIT: PERFORMANCE DIRECT FOOTCANDLES BASED ON DOWNLIGHT ONLY				MULTIPLE UNITS: PERFORMANCE 80/50/20% REFLECTANCES INITIAL FOOTCANDLES AND WATTS PER SQUARE FOOT							
		0°	0° - 10°	54	6%	Mounting Height AFF	FC at Center on Floor	Beam Diameter	FC at Beam Edge	Ceiling Height	Fixture Spacing	RCR 2		RCR 4	
	0°	478	0° - 10°	195	22%	5.5'	16 fc	8.8'	4 fc	8'	6'	28	0.50	15	0.32
	5°	469	0° - 20°	400	45%	6.5'	11 fc	10.4'	3 fc	10'	7'	15	0.27	18	0.38
	15°	500	0° - 30°	605	68%	7.5'	8 fc	11.9'	2 fc	12'	8'	14	0.24	11	0.24
	25°	447	0° - 40°	823	93%	8.5'	7 fc	13.5'	2 fc	Delivered Illuminance Rating: (DIR)		56 FC per W/Sq. Ft.		47 FC per W/Sq. Ft.	
	35°	309	0° - 60°	889	100%	10.0'	5 fc	15.9'	1 fc	Recessed mounting Square rooms used for multiple units: RCR 2: Length & Width = Ceiling Ht. - 2.5' x 5.00 RCR 4: Length & Width = Ceiling Ht. - 2.5' x 2.50 * Average Footcandles at 2.5' Above Floor					
	45°	153	0° - 80°	883	100%	12.0'	3 fc	19.1'	1 fc						
	55°	81	0° - 90°	883	100%	14.0'	2 fc	22.3'	1 fc						
	90°	0	Total	883	100%	16.0'	2 fc	25.5'	0 fc						

Delivered Lumens: 892
Luminaire Watts: 15
LER: 59.47

CP at 0° (Nadir): 478
CRI: 83

Beam Angle: 77°
Spacing Ratio: 1.19

Lumen Multiplier: 10L x 0.74
CCT Multiplier: LEDXT lumen output is the same for all available CCTs

