



6" ROUND TRIMLESS IC WALL WASH

XT SERIES / 2000 LUMENS MAX



RWZI6XT - TRIMLESS / IC RATED

APPLICATION

Versatile 6" Round aperture recessed LED wall wash for Insulated Ceiling installations with flangeless trim and a wide range of lumens and control options.

FEATURES

Two-stage optical system for smooth light distribution and focus control. Quick change LED module with interchangeable optics for job site adjustment and fixture maintenance. Shallow plenum design. Tool-less driver and j-box access. Posi-lock trim retention torsion springs.

TRIM FINISH

A variety of architectural powdercoat and anodized finishes are available.

Plaster mesh fitter included.

ELECTRONICS

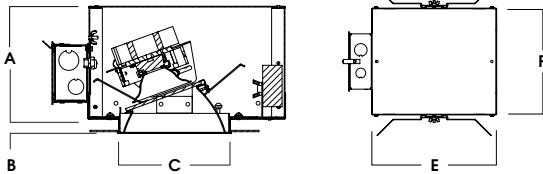
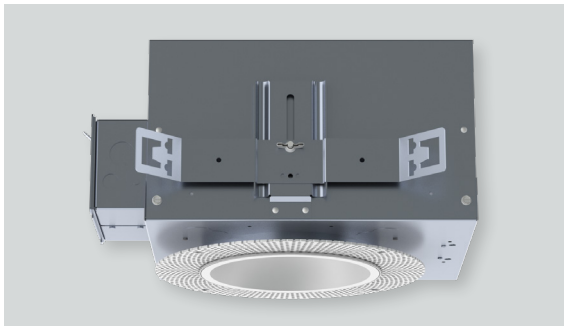
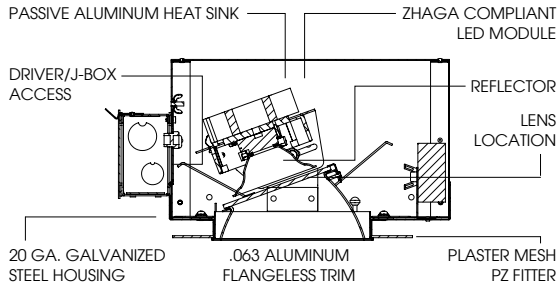
LED system features Xicato LED module with proprietary phosphor technology that provides consistent, stable color with CCT control of +/- 100K over life of the light engine. Base CRI is 83 with 2-step MacAdam Ellipse binning. High CRI is 98 with 1x2-step MacAdam Ellipse binning. Variety of electronic 120V/277V and dimming drivers.

CONSTRUCTION

Housing/frame constructed of #20 ga. galvanized steel to resist corrosion. Flangeless one piece trim spun from 0.063" thick high purity aluminum and finished to specification.

CODE COMPLIANCE

BAA Compliant. IC rated. ETL certified to meet US and Canadian standards. Suitable for dry or damp locations. Optional Wet location. Manufactured and tested to UL standards No. 1598/8750.



A	B	C	D	E
6.4	.625	6.0	10L-13L: 13.2	9.5
162.6 mm	15.2 mm	152.4 mm	20L: 19.2	241.3 mm

WATTAGE TO LUMENS UPDATE					
CURRENT PART NUMBER EXAMPLE	PREVIOUS PART NUMBER EXAMPLE	SOURCE LUMENS ¹	DELIVERED LUMENS ²	SYSTEM WATTS	LPW
RWZI6XT10L	RWZ6LEDX115W	1000	593	11.1	53.4
RWZI6XT13L	RWZ6LEDX120W	1300	798	15.0	53.2
RWZI6XT20L	RWZ6LEDX133W	2000	1228	23.7	51.8

SERIES	LUMENS ¹	CCT	OPTICS	DRIVER / DIMMING / VOLTAGE ³	OPTIONS ⁴	TRIM	FINISH	TRIM OPTIONS ¹⁰		
RWZI6XT	83 CRI		WD Wide XW Extra Wide	E Electronic Driver DS10 10% 0-10V DO10 1% 0-10V DS2W1 1% ELV/MLV, 120V DLTE1 1% Lutron® 2-Wire Forward Phase, 120V DL3E 1% Lutron® EcoSystem®, Fade EL10 1%, eldoLED ED01 0.1%, eldoLED DALI DALI Control	1 120V 2 277V	RW6NXT ⁷	SG ⁸ Semi-Diffuse HZ Haze Full Diffuse MW Matte White MB Matte Black PT Platinum Silver OB Oil Rubbed Bronze CH Charcoal AC Anodic Champagne AS Anodic Sapphire AM Anodic Malachite SN Sun Gold CO Copper Metallic GH Graphite AMB Anti Microbial Finish CC ⁹ Custom Color	SKX ¹¹ Linear Wall Wash Lens		
	10L 1000 Lm	27K 2700K							BH27 ⁵ 27" Solid Bars	SKW Linear Wall Wash Lens Wet Location
	13L 1300 Lm	30K 3000K							H12 12" - 24" Expandable Bars	
	20L 2000 Lm	35K 3500K							H06 6" - 12" Expandable Bars	
		40K 4000K							CB24 24" C-Channel Bars	
									EMRM Remote Emergency Battery Pack	
	98 CRI			FS Fusing						
	10L 1000 Lm	27HK 2700K	EB Black Housing	CR Corrosion Resistant						
	13L 1300 Lm	30HK 3000K	PR ⁶ Deep Ceiling Extension	GR Goof Ring						
	20L 2000 Lm	35HK 3500K	CCEA Chicago Ceiling Plenum Rated	AMB Anti Microbial Finish						
		40HK 4000K								

EXAMPLE: RWZI6XT13L35KXWE1/H12/RW6NXTSGSKX

NOTES:
 1 Nominal Source Lumens at Any CCT 2 Nominal Delivered Lumens 83 CRI at Any CCT with XW-SG-SKX 3 Contact Factory for Additional Options 4 See Product Options Page for Details 5 Standard Bar Hangers 6 Contact Factory
 7 "N" Indicates Flangeless Trim 8 Standard Finish 9 Contact Factory for Special Finishes 10 Contact factory for Special Lenses/Louvers 11 Standard Lens



PROJECT: _____
 TYPE: _____



Dimensions and values shown are nominal. Spectrum Lighting continually works to improve products and reserves the right to make changes which may alter the performance or appearance of products.