

**SR12SQLEDOA**

**APPLICATION**

12" square recessed LED downlight LED features soffit/area light for optimal performance.

**FEATURES**

Efficient, powerful LED light source, designed to exceed 50,000 hours of life (**L70**). Multi-Bar mounting brackets. All LED modules and drivers are replaceable and up-gradeable. New and Retrofit/Remodeler options. Wet location use screws fasteners. (4)

**FINISH**

A variety of architectural powdercoat and anodized finishes are available. Matte White flange is standard.

**ELECTRONICS**

LED module features high brightness white Nichia LEDs. 3-step MacAdam Ellipses binning and CRI 84 minimum. Variety of electronic 120V/277V and dimming drivers.

**CONSTRUCTION**

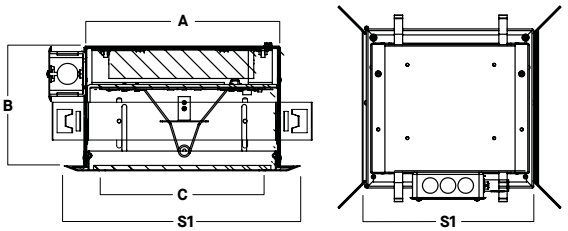
Housing constructed of .050 5052-H32 aluminum. Trim fabricated from aluminum extrusion and finished to specification.

**CODE COMPLIANCE**

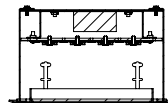
BAA Compliant. Non-IC rated. ETL certified to meet US and Canadian standards. Suitable for dry or damp locations. Optional Wet location. Manufactured and tested to UL standards No. 1598/8750.

**WATTAGE TO LUMENS UPDATE**

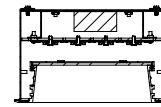
CURRENT PART NUMBER EXAMPLE	PREVIOUS PART NUMBER EXAMPLE	SOURCE LUMENS <sup>1</sup>	SYSTEM WATTS
SR12SQLEDOA11L	SR12SQLEDOA14W	1100	14W
SR12SQLEDOA22L	SR12SQLEDOA26W	2200	26W
SR12SQLEDOA33L	SR12SQLEDOA37W	3300	37W
SR12SQLEDOA44L	SR12SQLEDOA47W	4400	47W



A	B	C	TRIM	S1
11.9	5.1	10.5	FT1212	13.0
11.9	5.1	10.5	RT1212	12.5



FT-Flush Trim/Lens



RT-Regressed Trim/Lens



Retrofit/Remodeler with Flush Trim

SERIES	LUMENS <sup>1</sup>	CCT	DRIVER / VOLTAGE <sup>2</sup>	OPTIONS <sup>3</sup>	TRIM	FINISH <sup>5</sup>	OPTIONS																																																					
SR12SQLEDOA	11L	1100 Lm	30K 3000K	E_ Electronic Driver	1 120V	BH27 <sup>4</sup> 27" Solid Bars	<table border="1"> <thead> <tr> <th>TRIM / FLANGE FINISH</th> <th>LENS</th> </tr> </thead> <tbody> <tr> <td>FLUSH TRIM</td> <td rowspan="2"> <table border="1"> <thead> <tr> <th>TRIM / FLANGE FINISH</th> <th>LENS</th> </tr> </thead> <tbody> <tr> <td>MW<sup>6</sup> Matte White</td> <td rowspan="4">FO<sup>8</sup> Matte White Acrylic Lens</td> </tr> <tr> <td>MB Matte Black</td> </tr> <tr> <td>PT Platinum</td> </tr> <tr> <td>CC<sup>9</sup> Custom Color</td> </tr> <tr> <td>REGRESSED TRIM</td> <td rowspan="2"> <table border="1"> <thead> <tr> <th>TRIM / FLANGE FINISH</th> <th>LENS</th> </tr> </thead> <tbody> <tr> <td>WF<sup>7</sup> White Flange</td> <td rowspan="4">SO 90% Efficient</td> </tr> <tr> <td>MB Matte Black</td> </tr> <tr> <td>PT Platinum Silver</td> </tr> <tr> <td>CC<sup>9</sup> Custom Color</td> </tr> </tbody> </table> </td> </tr> <tr> <td>35K 3500K</td> <td rowspan="2">DS10_ 10%, 0-10V</td> <td rowspan="2">2 277V</td> <td rowspan="2">EM Integral Emergency Battery</td> <td rowspan="2"> <table border="1"> <thead> <tr> <th>TRIM / FLANGE FINISH</th> <th>LENS</th> </tr> </thead> <tbody> <tr> <td>SO 90% Efficient</td> <td rowspan="4">WL<sup>9</sup> Wet Location</td> </tr> <tr> <td>CR Corrosion Resistant</td> </tr> <tr> <td>RM Remodeler Housing</td> </tr> <tr> <td></td> </tr> </tbody> </table> </td> </tr> <tr> <td>44L</td> <td>4400 Lm</td> <td></td> <td></td> <td></td> <td></td> <td></td> </tr> <tr> <td></td> <td></td> <td>40K 4000K</td> <td></td> <td></td> <td></td> <td></td> </tr> <tr> <td></td> <td></td> <td>50K 5000K</td> <td></td> <td></td> <td></td> <td></td> </tr> </tbody> </table> </td></tr></tbody></table>	TRIM / FLANGE FINISH	LENS	FLUSH TRIM	<table border="1"> <thead> <tr> <th>TRIM / FLANGE FINISH</th> <th>LENS</th> </tr> </thead> <tbody> <tr> <td>MW<sup>6</sup> Matte White</td> <td rowspan="4">FO<sup>8</sup> Matte White Acrylic Lens</td> </tr> <tr> <td>MB Matte Black</td> </tr> <tr> <td>PT Platinum</td> </tr> <tr> <td>CC<sup>9</sup> Custom Color</td> </tr> <tr> <td>REGRESSED TRIM</td> <td rowspan="2"> <table border="1"> <thead> <tr> <th>TRIM / FLANGE FINISH</th> <th>LENS</th> </tr> </thead> <tbody> <tr> <td>WF<sup>7</sup> White Flange</td> <td rowspan="4">SO 90% Efficient</td> </tr> <tr> <td>MB Matte Black</td> </tr> <tr> <td>PT Platinum Silver</td> </tr> <tr> <td>CC<sup>9</sup> Custom Color</td> </tr> </tbody> </table> </td> </tr> <tr> <td>35K 3500K</td> <td rowspan="2">DS10_ 10%, 0-10V</td> <td rowspan="2">2 277V</td> <td rowspan="2">EM Integral Emergency Battery</td> <td rowspan="2"> <table border="1"> <thead> <tr> <th>TRIM / FLANGE FINISH</th> <th>LENS</th> </tr> </thead> <tbody> <tr> <td>SO 90% Efficient</td> <td rowspan="4">WL<sup>9</sup> Wet Location</td> </tr> <tr> <td>CR Corrosion Resistant</td> </tr> <tr> <td>RM Remodeler Housing</td> </tr> <tr> <td></td> </tr> </tbody> </table> </td> </tr> <tr> <td>44L</td> <td>4400 Lm</td> <td></td> <td></td> <td></td> <td></td> <td></td> </tr> <tr> <td></td> <td></td> <td>40K 4000K</td> <td></td> <td></td> <td></td> <td></td> </tr> <tr> <td></td> <td></td> <td>50K 5000K</td> <td></td> <td></td> <td></td> <td></td> </tr> </tbody> </table>	TRIM / FLANGE FINISH	LENS	MW <sup>6</sup> Matte White	FO <sup>8</sup> Matte White Acrylic Lens	MB Matte Black	PT Platinum	CC <sup>9</sup> Custom Color	REGRESSED TRIM	<table border="1"> <thead> <tr> <th>TRIM / FLANGE FINISH</th> <th>LENS</th> </tr> </thead> <tbody> <tr> <td>WF<sup>7</sup> White Flange</td> <td rowspan="4">SO 90% Efficient</td> </tr> <tr> <td>MB Matte Black</td> </tr> <tr> <td>PT Platinum Silver</td> </tr> <tr> <td>CC<sup>9</sup> Custom Color</td> </tr> </tbody> </table>	TRIM / FLANGE FINISH	LENS	WF <sup>7</sup> White Flange	SO 90% Efficient	MB Matte Black	PT Platinum Silver	CC <sup>9</sup> Custom Color	35K 3500K	DS10_ 10%, 0-10V	2 277V	EM Integral Emergency Battery	<table border="1"> <thead> <tr> <th>TRIM / FLANGE FINISH</th> <th>LENS</th> </tr> </thead> <tbody> <tr> <td>SO 90% Efficient</td> <td rowspan="4">WL<sup>9</sup> Wet Location</td> </tr> <tr> <td>CR Corrosion Resistant</td> </tr> <tr> <td>RM Remodeler Housing</td> </tr> <tr> <td></td> </tr> </tbody> </table>	TRIM / FLANGE FINISH	LENS	SO 90% Efficient	WL <sup>9</sup> Wet Location	CR Corrosion Resistant	RM Remodeler Housing		44L	4400 Lm								40K 4000K							50K 5000K				
	TRIM / FLANGE FINISH	LENS																																																										
	FLUSH TRIM	<table border="1"> <thead> <tr> <th>TRIM / FLANGE FINISH</th> <th>LENS</th> </tr> </thead> <tbody> <tr> <td>MW<sup>6</sup> Matte White</td> <td rowspan="4">FO<sup>8</sup> Matte White Acrylic Lens</td> </tr> <tr> <td>MB Matte Black</td> </tr> <tr> <td>PT Platinum</td> </tr> <tr> <td>CC<sup>9</sup> Custom Color</td> </tr> <tr> <td>REGRESSED TRIM</td> <td rowspan="2"> <table border="1"> <thead> <tr> <th>TRIM / FLANGE FINISH</th> <th>LENS</th> </tr> </thead> <tbody> <tr> <td>WF<sup>7</sup> White Flange</td> <td rowspan="4">SO 90% Efficient</td> </tr> <tr> <td>MB Matte Black</td> </tr> <tr> <td>PT Platinum Silver</td> </tr> <tr> <td>CC<sup>9</sup> Custom Color</td> </tr> </tbody> </table> </td> </tr> <tr> <td>35K 3500K</td> <td rowspan="2">DS10_ 10%, 0-10V</td> <td rowspan="2">2 277V</td> <td rowspan="2">EM Integral Emergency Battery</td> <td rowspan="2"> <table border="1"> <thead> <tr> <th>TRIM / FLANGE FINISH</th> <th>LENS</th> </tr> </thead> <tbody> <tr> <td>SO 90% Efficient</td> <td rowspan="4">WL<sup>9</sup> Wet Location</td> </tr> <tr> <td>CR Corrosion Resistant</td> </tr> <tr> <td>RM Remodeler Housing</td> </tr> <tr> <td></td> </tr> </tbody> </table> </td> </tr> <tr> <td>44L</td> <td>4400 Lm</td> <td></td> <td></td> <td></td> <td></td> <td></td> </tr> <tr> <td></td> <td></td> <td>40K 4000K</td> <td></td> <td></td> <td></td> <td></td> </tr> <tr> <td></td> <td></td> <td>50K 5000K</td> <td></td> <td></td> <td></td> <td></td> </tr> </tbody> </table>						TRIM / FLANGE FINISH	LENS	MW <sup>6</sup> Matte White	FO <sup>8</sup> Matte White Acrylic Lens	MB Matte Black	PT Platinum	CC <sup>9</sup> Custom Color		REGRESSED TRIM	<table border="1"> <thead> <tr> <th>TRIM / FLANGE FINISH</th> <th>LENS</th> </tr> </thead> <tbody> <tr> <td>WF<sup>7</sup> White Flange</td> <td rowspan="4">SO 90% Efficient</td> </tr> <tr> <td>MB Matte Black</td> </tr> <tr> <td>PT Platinum Silver</td> </tr> <tr> <td>CC<sup>9</sup> Custom Color</td> </tr> </tbody> </table>	TRIM / FLANGE FINISH	LENS	WF <sup>7</sup> White Flange	SO 90% Efficient	MB Matte Black	PT Platinum Silver		CC <sup>9</sup> Custom Color	35K 3500K	DS10_ 10%, 0-10V	2 277V	EM Integral Emergency Battery	<table border="1"> <thead> <tr> <th>TRIM / FLANGE FINISH</th> <th>LENS</th> </tr> </thead> <tbody> <tr> <td>SO 90% Efficient</td> <td rowspan="4">WL<sup>9</sup> Wet Location</td> </tr> <tr> <td>CR Corrosion Resistant</td> </tr> <tr> <td>RM Remodeler Housing</td> </tr> <tr> <td></td> </tr> </tbody> </table>	TRIM / FLANGE FINISH	LENS	SO 90% Efficient	WL <sup>9</sup> Wet Location	CR Corrosion Resistant		RM Remodeler Housing		44L	4400 Lm								40K 4000K							50K 5000K					
	TRIM / FLANGE FINISH							LENS																																																				
MW <sup>6</sup> Matte White	FO <sup>8</sup> Matte White Acrylic Lens																																																											
MB Matte Black																																																												
PT Platinum																																																												
CC <sup>9</sup> Custom Color																																																												
REGRESSED TRIM	<table border="1"> <thead> <tr> <th>TRIM / FLANGE FINISH</th> <th>LENS</th> </tr> </thead> <tbody> <tr> <td>WF<sup>7</sup> White Flange</td> <td rowspan="4">SO 90% Efficient</td> </tr> <tr> <td>MB Matte Black</td> </tr> <tr> <td>PT Platinum Silver</td> </tr> <tr> <td>CC<sup>9</sup> Custom Color</td> </tr> </tbody> </table>	TRIM / FLANGE FINISH	LENS	WF <sup>7</sup> White Flange	SO 90% Efficient	MB Matte Black	PT Platinum Silver	CC <sup>9</sup> Custom Color																																																				
TRIM / FLANGE FINISH		LENS																																																										
WF <sup>7</sup> White Flange	SO 90% Efficient																																																											
MB Matte Black																																																												
PT Platinum Silver																																																												
CC <sup>9</sup> Custom Color																																																												
35K 3500K	DS10_ 10%, 0-10V	2 277V	EM Integral Emergency Battery	<table border="1"> <thead> <tr> <th>TRIM / FLANGE FINISH</th> <th>LENS</th> </tr> </thead> <tbody> <tr> <td>SO 90% Efficient</td> <td rowspan="4">WL<sup>9</sup> Wet Location</td> </tr> <tr> <td>CR Corrosion Resistant</td> </tr> <tr> <td>RM Remodeler Housing</td> </tr> <tr> <td></td> </tr> </tbody> </table>	TRIM / FLANGE FINISH	LENS	SO 90% Efficient	WL <sup>9</sup> Wet Location	CR Corrosion Resistant	RM Remodeler Housing																																																		
TRIM / FLANGE FINISH					LENS																																																							
SO 90% Efficient	WL <sup>9</sup> Wet Location																																																											
CR Corrosion Resistant																																																												
RM Remodeler Housing																																																												
44L	4400 Lm																																																											
		40K 4000K																																																										
		50K 5000K																																																										

**EXAMPLE:** SR12SQLEDOA33L35KE1BH27/FT1212MW/FO

**NOTES:**  
 1 Nominal Source Lumens 2 Contact Factory for Additional Options 3 See Product Options Page for Details 4 Standard Bar Hangers 5 Contact Factory for Special Finishes 6 Standard Finish  
 7 For use with Non Matte White Trim Finish 8 Standard Lens 9 Trim Secured with 4 Screws



PROJECT: \_\_\_\_\_  
 QUANTITY: \_\_\_\_\_ TYPE: \_\_\_\_\_

