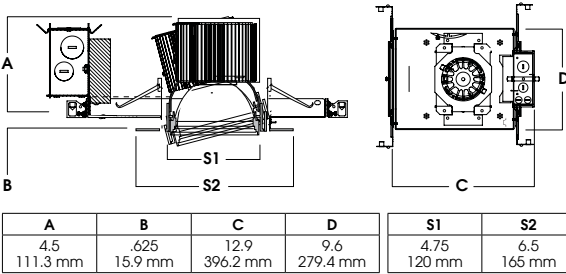
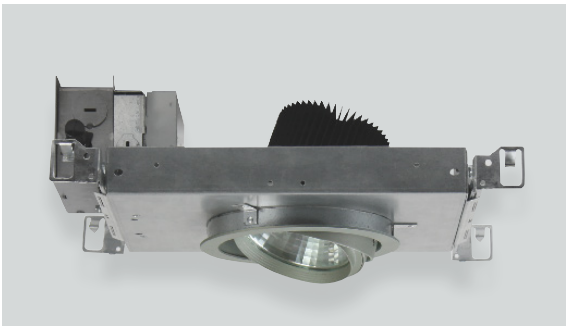
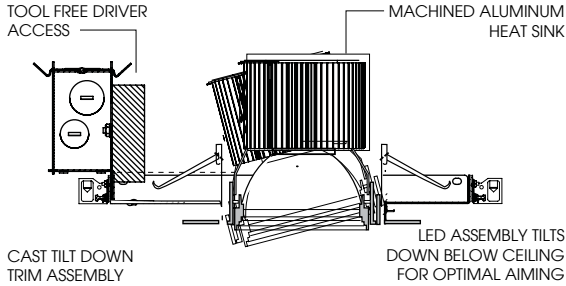




6" BIAXIAL TILT ACCENT / NON-IC

XT SERIES / 4000 LUMENS



SGM6XT

APPLICATION

Biaxial Tilt adjustable accent light for retail, residential and commercial ceiling.

FEATURES

LED assembly Biaxial Tilt to 20° and rotates 360° for optimal aiming. Single optical system for smooth light distribution and focus control. Quick change LED module with interchangeable optics for job site adjustment and fixture maintenance. Shallow plenum design. Tool-less driver and j-box access. Posi-lock trim retention torsion springs. Front loading bezel for lens or louver accessories.

TRIM FINISH

A variety of architectural powdercoat and anodized finishes are available.

Matte White flange is standard.

ELECTRONICS

LED system features Xicato LED module with proprietary phosphor technology that provides consistent, stable color with CCT control of +/- 100K over life of the light engine. Base CRI is 83 with 2 MacAdam Ellipse binning. High CRI is 98 with 1 MacAdam Ellipse binning. Variety of electronic 120V/277V and dimming drivers.

CONSTRUCTION

Housing/frame constructed of #20 ga. galvanized steel to resist corrosion. Die cast three piece trim. Spun high performance internal aluminum reflector.

CODE COMPLIANCE

BAA Compliant. Non-IC rated. ETL certified to meet US and Canadian standards. Suitable for dry or damp locations. Manufactured and tested to UL standards No. 1598/8750.

WATTAGE TO LUMENS UPDATE			
CURRENT PART NUMBER EXAMPLE	PREVIOUS PART NUMBER EXAMPLE	SOURCE LUMENS ¹	SYSTEM WATTS
SGM6XT10L	SGP6LEDX115W	1000	9.1
SGM6XT13L	SGP6LEDX120W	1300	13.0
SGM6XT20L	SGP6LEDX133W	2000	21.7
SGM6XT30L	SGP6LEDX152W	3000	32.6
SGM6XT40L	N/A	4000	39.9

SERIES	LUMENS ¹	CCT	DRIVER / DIMMING / VOLTAGE ³	OPTIONS ⁵	TRIM	LUMENS ¹	CCT	BEAM	FINISH	TRIM OPTIONS					
SGM6XT	83 CRI		E Electronic Driver DS10_ 10% 0-10V DO10_ 1% 0-10V DS2W1 1%, ELV/MLV, 120V DLTE1 1% Lutron® 2-Wire Forward Phase, 120V DL3E_ 1% Lutron® EcoSystem®, Fade EL10_ 1%, eldoLED ED01_ 0.1%, eldoLED DALI_ DALI Control DMXS_4 DMX Standard Configuration DMXC_4 DMX Non-Standard Custom	1 120V 2 277V	H12⁶ 12" - 24" Expandable Bars H06 6" - 12" Expandable Bars FS Fusing CR Corrosion Resistant PR⁷ Deep Ceiling Extension TBC T-Bar Clips EM Emergency Battery Pack GR Goof Ring EB Black Housing	GM06XT	83 CRI		ND 19° MD 24° WD 38°	MW Matte White MB Matte Black PT Platinum Silver CC⁸ Custom Color	GL⁹ Clear Glass Lens SO Micro Prism Solite™ Lens FG Frosted Glass Lens GS Gasket				
	10L	1000 Lm					27K	2700K				10L	1000 Lm	27K	2700K
	13L	1300 Lm					30K	3000K				13L	1300 Lm	30K	3000K
	20L	2000 Lm					35K	3500K				20L	2000 Lm	35K	3500K
	30L	3000 Lm					40K	4000K				30L	3000 Lm	40K	4000K
	40L²	4000 Lm										40L	4000 Lm		
	98 CRI											98 CRI			
	10L	1000 Lm					27HK	2700K				10L	1000 Lm	27HK	2700K
	13L	1300 Lm					30HK	3000K				13L	1300 Lm	30HK	3000K
	20L	2000 Lm					35HK	3500K				20L	2000 Lm	35HK	3500K
	30L²	3000 Lm					40HK	4000K				30L	3000 Lm	40HK	4000K

EXAMPLE: SGM6XT10LE1/H12/GM06XT10L30KMDMWSO

NOTES:
 1 Nominal Source Lumens at Any CCT 2 Install Fixtures in Accordance with the Following Marked Spacing: (a) Center To Center of Adjacent Luminaires: 600mm (24in); (b) Top of Luminaire to overhead Building Member: 12.7mm (0.5in); (c) Luminaire Center to side Building Member: 600mm (24in) 3 Contact Factory for Additional Options 4 Contact Factory 5 See Product Options Page for Details 6 Standard Bar Hangers 7 Contact Factory 8 Contact Factory for Special Finishes 9 Standard Lens



PROJECT: _____
 TYPE: _____



Dimensions and values shown are nominal. Spectrum Lighting continually works to improve products and reserves the right to make changes which may alter the performance or appearance of products.