

# 3" ROUND INDIRECT

## PICO SERIES



### C0310UXT - WALL MOUNT

#### APPLICATION

3" round x 10" high XT series indirect uplight cylinder luminaire.

#### FEATURES

Spectrum's Cylinder series provides traditional architectural style with high performance and energy efficient illumination. Integral LED EM battery option. Rugged design with flexible mounting, finish and LED options make these extremely versatile fixtures. Integral LED driver. Quick change LED module with interchangeable optics for job site flexibility and fixture upgrade.

#### FINISH

Multi-stage polyester powder-coat process applied on our dedicated paint lines. See mounting and color pages for standard finishes. All exposed materials are chromate pretreated to resist corrosion.

#### ELECTRONICS

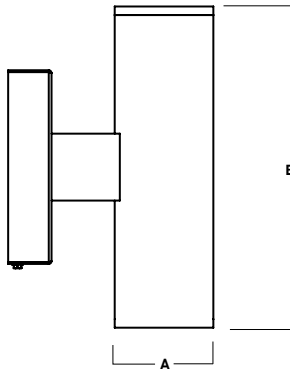
LED system features Xicato LED module with proprietary phosphor technology that provides consistent stable color with CCT control of +/- 100K over life of the light engine. Base CRI is 83 with 2-step MacAdam Ellipse binning. High CRI is 98 with 1 x 2-step MacAdam Ellipse binning. Variety of electronic 120V/277V and dimming drivers.

#### CONSTRUCTION

Fabricated seamless aluminum fixture housing. Specular primary optics provide high efficiency illumination. Stainless steel hardware with galvanized brackets to resist corrosion.

#### CODE COMPLIANCE

BAA compliant. ETL certified to meet US and Canadian standards. Suitable for dry or damp locations. Wet Location Option. Manufactured and tested to UL standards No. 1598/8750.



A	B
3.3 83.8 mm	10.6 269.2 mm

Fixture Weight: 4.5 lbs

LUMENS / WATTAGE DATA				
PART NUMBER	SOURCE LUMENS <sup>1</sup>	DELIVERED LUMENS <sup>2</sup>	SYSTEM WATTS <sup>3</sup>	LPW
C0310UXT7L	700	415	6.2	67
C0310UXT10L	1000	553	9.1	61

SERIES	LUMENS <sup>1</sup>	CCT	OPTICS	DRIVER / DIMMING <sup>5</sup>	OPTIONS <sup>6</sup>	MOUNTING <sup>9</sup>	FINISH <sup>10</sup>	
C0310UXT	7L 700 Lm 10L 1000 Lm	83 CRI	XN <sup>4</sup> 12° ND 22° MD 40° WD 44°	EX Electronic Driver, 120V/277V DS10X 10%, 0-10V, 120V/277V DS2W1 ELV/MLV, 120V	WL Wet Location CR Corrosion Resistant	WM3 Wall Mount 3" Extension	MW <sup>11</sup> Matte White MB <sup>11</sup> Matte Black PT <sup>11</sup> Platinum Silver CC Custom Color	
		98 CRI						
		27K 2700K 30K 3000K 35K 3500K 40K 4000K						
		27HK 2700K 30HK 3000K 35HK 3500K 40HK 4000K						
					LENS	EMERGENCY BATTERY OPTIONS		
					GL <sup>7</sup> Clear Glass Lens SO <sup>8</sup> Micro Prism Solite™ Lens	EMRM 7W Remote EM EMEN 7W Remote with Enclosure		

**EXAMPLE:** C0310UXT10L35KWDEX/WL/SO/WM3/MW

**NOTES:**  
 1 Nominal Source Lumens At Any CCT 2 Nominal Delivered Lumens at 83 CRI at Any CCT with MD-GL 3 At 83 CRI 4 XN with 98 CRI Option Pending 5 Contact Factory for Additional Options 6 See Product Options Page for Details  
 7 Standard Lens for XN, ND 8 Standard Lens for MD, WD 9 See Mounting Page for Details on Components and Finishes 10 Reference Color Sheet Located on Product Webpage for Full List of Available Colors/Consult Factory for Special Finishes 11 Standard Finishes



PROJECT: \_\_\_\_\_  
 TYPE: \_\_\_\_\_



Dimensions and values shown are nominal. Spectrum Lighting continually works to improve products and reserves the right to make changes which may alter the performance or appearance of products.

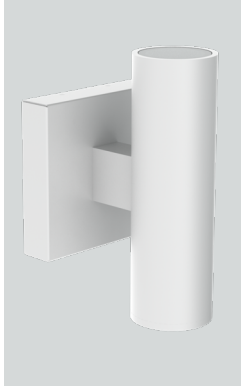
# 3" ROUND INDIRECT

## PICO SERIES / FIXTURE OPTIONS

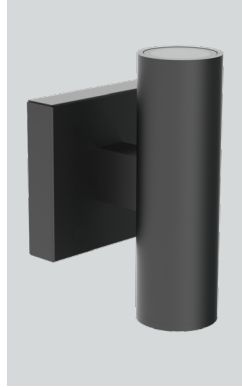


### STANDARD FINISHES

**MW**  
MATTE WHITE



**MB**  
MATTE BLACK

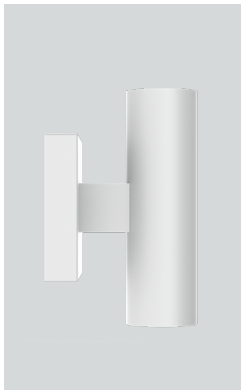


**PT**  
PLATINUM SILVER

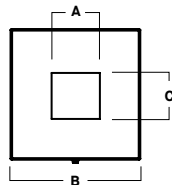


### WALL MOUNT DETAIL

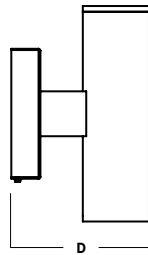
**WM3**  
WALL MOUNT 3" EXTENSION



FRONT VIEW



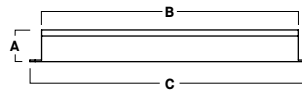
SIDE VIEW



A	B	C	D
1.4	6.4	2.2	6.3
35.6 mm	162.6 mm	55.9 mm	160.0 mm

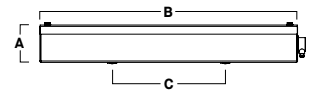
### EMERGENCY BATTERY OPTIONS

**EMRM\*** - 7W REMOTE EMERGENCY BATTERY  
(50' MAX)



A	B	C
1.3	12.6	13.0

**EMEN\*** - 7W REMOTE EMERGENCY BATTERY  
WITH ENCLOSURE (50' MAX)



A	B	C
2.0	17.0	6.2

\*OTHER EM BATTERY SIZES AVAILABLE, CONSULT FACTORY

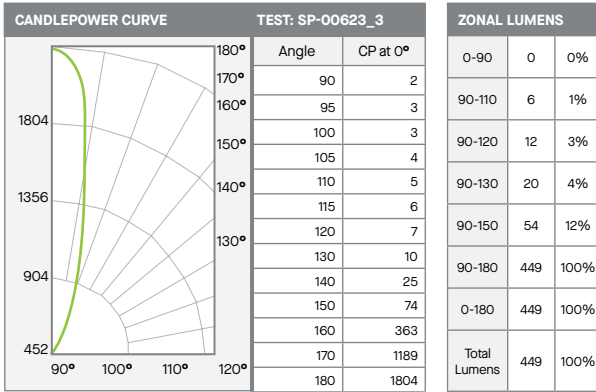
# 3" ROUND INDIRECT

## PICO SERIES / PHOTOMETRIC DATA



### CO310UXT-10LxxK-NDEX-GLxxMW

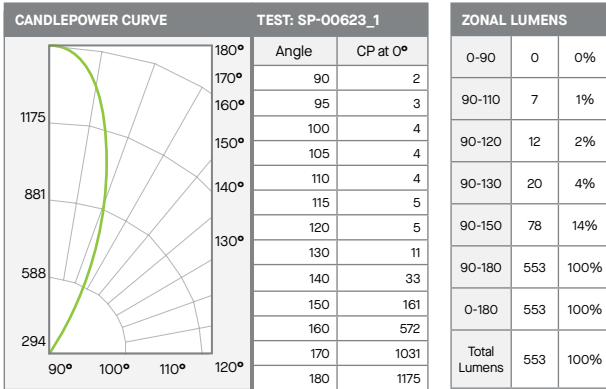
### 10L NARROW - 83 CRI



Delivered Lumens: 449    CP @ 0° (Nadir): 2    Spacing Ratio: N/A  
 Luminaire Watts: 9.1    Beam Angle: 24°    Output Multipliers: 7L x 0.75  
 LER: 49    CRI: 83

### CO310UXT-10LxxK-MDEX-GLxxMW

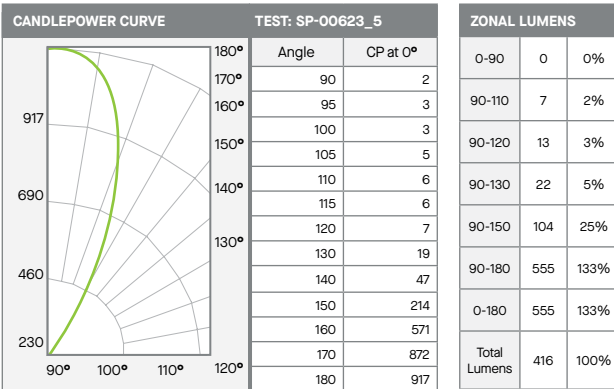
### 10L MEDIUM - 83 CRI



Delivered Lumens: 553    CP @ 0° (Nadir): 2    Spacing Ratio: N/A  
 Luminaire Watts: 9.1    Beam Angle: 39.8°    Output Multipliers: 7L x 0.75  
 LER: 61    CRI: 83

### CO310UXT-10LxxK-WDEX-GLxxMW

### 10L WIDE - 83 CRI



Delivered Lumens: 416    CP @ 0° (Nadir): 2    Spacing Ratio: N/A  
 Luminaire Watts: 9.1    Beam Angle: 44.1°    Output Multipliers: 7L x 0.75  
 LER: 46    CRI: 83