



PROJECT: _____
 TYPE: _____



4" ROUND DEEP DOWNLIGHT N-LINE WILDLIFE FRIENDLY

UNIVERSAL HOUSINGS WITH INTERCHANGEABLE TRIMS

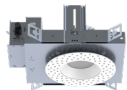
Spectrum's Enduro 4" recessed round downlight series features a trim and variety of options for accent and general illumination.

LUMENS AND WATTAGE CHART					
PART NUMBER	LUMENS	SOURCE LUMENS ¹	DELIVERED LUMENS ²	SYSTEM WATTS	LPW
RDD4N	TA5L	500	390	16	25
RDD4N	TD10L	1000	803	16	51

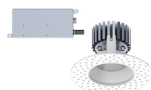


AVAILABLE HOUSING TYPES

SR4NMO - New Construction



SR4NMR - Remodel Construction



Shown with N-Line Plaster Fitter

FIXTURE HOUSING SPECIFICATION

SERIES	LUMENS ¹	DRIVER / DIMMING / VOLTAGE	OPTIONS	MOUNTING
SR4NMO New Construction	AMBER ONLY ³ TA5L 500 Lm Amber Only	DO10_ 1%, 0-10V 1 120V 2 277V	EB PR ⁵ Black Housing Consult Factory	H12 ⁶ 12" - 24" Expandable Bars BH27 27" Solid Bars CB24 24" C-Channel Bars
SR4NMR Remodel Construction	DUAL CIRCUIT ⁴ TD10L CIR 1 1000 Lm at 3000K CIR 2 500 Lm Amber Only	DS2W_ ELV/MLV, 120V 1 120V		

- Full Shielding.
- Die-cast aluminum trim with a wide variety of options.
- Deep regressed trim.
- Universal housing accepts all trim types, including F-Line self-flange
- 5 year warranty on fixture and electronics.
- Sustainable fixture.

AVAILABLE TRIM / MODULE TYPES

RDD4N



TRIM / MODULE SPECIFICATION

TRIM	CCT	FINISH	LENS ⁹	OPTIONS
RDD4N Downlight	AMBER ONLY ³ AMB 500 Lm Amber Only	MW ⁷ Matte White MB Matte Black PT Platinum Silver BZ Bronze CH Charcoal OB Oil Rubbed Bronze AS Sapphire AM Malachite SN Sun Gold CO Copper Metallic GH Graphite CC ⁸ Custom Color	SO ¹⁰ Micro Prism Solite™ Lens GL Clear Glass Lens FG Frosted Glass Lens	PR ⁵ Consult Factory
	DUAL CIRCUIT ⁴ 30K CIR 1 1000 Lm at 3000K CIR 2 500 Lm Amber Only			

EXAMPLE: SR4NMOTA5LDS2W1/H12/RDD4NAMBCHSO

EXAMPLE: SR4NMOTD10LDS2W1/H12/RDD4N30KCHSO

NOTES:
 1 Nominal Source Lumens 2 Nominal Delivered Lumens 3 Specify with TA Only 4 Specify with TD Only, TD/Dual Circuit Option Requires Dedicated on Site Controls by Others, Controls by Others Are Not to Allow Both Circuits to be Energized Simultaneously, Consult Factory for More Information 5 Contact Factory 6 Standard Bar Hangers 7 Standard Finish 8 Contact Factory for Special Finishes 9 Lens is Required 10 Standard Lens



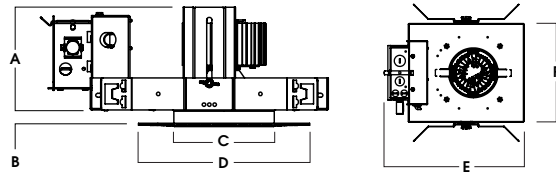
Dimensions and values shown are nominal. Spectrum Lighting continually works to improve products and reserves the right to make changes which may alter the performance or appearance of products.



HOUSING DIMENSIONS

SR4NMO - NEW CONSTRUCTION

Non-IC rated, thermally protected frame-in kit for new construction. Non-IC designation requires insulation must be minimum of 3" from housing.



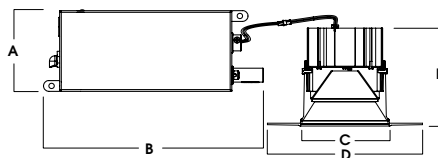
A	B	C	D	E	F
4.8	.625	4.3	8.0	13.1	9.5
121.9 mm	15.2 mm	109.2 mm	203.2 mm	332.7 mm	241.3 mm

Fixture Weight: 7 lbs

Ceiling Cutout: Ø 5"

SR4NMR - REMODEL CONSTRUCTION

Non-IC rated frame-in kit for existing construction. Non-IC designation requires insulation must be minimum of 3" from housing.



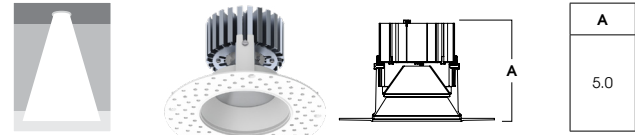
A	B	C	D	E
3.8	10.2	4.3	8.0	5.0
96.5 mm	259.1 mm	109.2 mm	203.2 mm	127.0 mm

Fixture Weight: 5 lbs

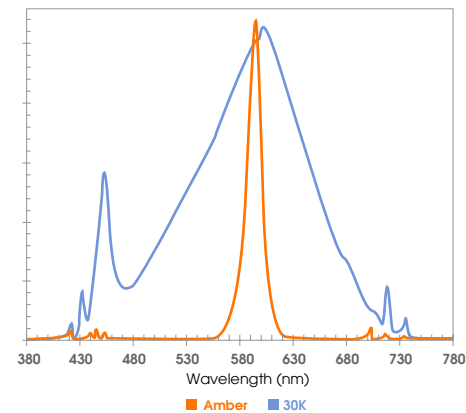
Ceiling Cutout: Ø 5"

TRIM / MODULE DATA

RDD4N - DOWNLIGHT MODULE



SPECTRAL POWER DISTRIBUTION COMPARISON



FEATURES

FRAME-IN KIT

Precision Die-formed 20 gauge galvanized steel housing and integral junction box with (3) 5/8", (3) 7/8" and (2) 1 1/8" knockouts. Junction box capacity: 8 12AWG rated for 90 °C. Tool-less driver and junction box access for ease of maintenance. Post-loc trim retention springs for 5/8"-1" ceiling thickness.

MOUNTING

A variety of mounting bars are available (excluding remodel). Ceiling materials must be rigid to support luminaire frame.

TRIM

Flangeless, one-piece, die-cast aluminum finished in a variety of powdercoat options. Designed for wet location. Trim option for trimless plaster. For self-flange options see F-Line.

REMODEL

Features tethered power supply and junction box with sheathed wire.

ELECTRONICS

Full shielding. Single circuit, amber only option is available. Amber LEDs are monochromatic, narrow spectral bandwidth that only emit long wavelengths >560 nm and <625 nm. Proprietary 2-circuit LED system: Circuit 1 is 3000K at 1000 lumens, Circuit 2 is Amber only at 500 lumens. 3000K white light is 3-step MacAdam Ellipse binning, with 80+ CRI.

EMERGENCY

Contact Factory.

COLOR VARIATION

Standard CRI (80) within 3-step MacAdam Ellipse.

LISTINGS

ETL Certified to meet US and Canadian Standards. Manufactured and tested to UL standard No. 1598/8750. BAA compliant. Suitable for wet locations. International Dark-Sky Association approved fixture.

WARRANTY

Fixtures, LEDs and drivers carry 5 year Spectrum warranty, as well as individual OEM warranty. Warranty is 5 years from date of manufacturing. LED system rated for operation in an ambient temperatures up to 25 °C.



PHOTOMETRIC DATA - 4" ROUND DEEP DOWNLIGHT

SR4MOTA5 LE1 RDD4x AMB MWxSO

CANDLEPOWER CURVE TEST SP-00789_2	INTENSITY CANDELA 0° AZIMUTH	ZONAL LUMENS	SINGLE UNIT: PERFORMANCE INITIAL FOOTCANDLES BASED ON IES BEAM ANGLE				MULTIPLE UNITS: PERFORMANCE 80/50/20% REFLECTANCES INITIAL FOOTCANDLES AND WATTS PER SQUARE FOOT											
			Mounting Height AFF	FC at Center on Floor	Beam Diameter	FC at Beam Edge	Ceiling Height	Fixture Spacing	RCR 2		RCR 4							
		0.00°	0° - 10°	24	6%													
		0.00° 250	0° - 20°	93	24%	5.5'	8 fc	8.1'	4 fc	9'	6'	9	0.37	11	0.54			
		5.00° 250	0° - 30°	194	50%	6.5'	6 fc	9.6'	3 fc	12'	8'	6	0.25	5	0.25			
		10.00° 250	0° - 40°	285	73%	7.5'	4 fc	11.0'	2 fc	16'	12'	2	0.09	3	0.12			
		15.00° 245	0° - 60°	367	94%	8.5'	3 fc	12.5'	2 fc			Delivered Illuminance Rating: (DIR)		24 FC per W/Sq. Ft.		20 FC per W/Sq. Ft.		
		20.00° 236	0° - 80°	388	100%	10.0'	3 fc	14.7'	1 fc			Recessed Mounting Square rooms used for multiple units: - RCR 2: Length & Width = Ceiling Ht. -2.5' x 5.00 - RCR 4: Length & Width = Ceiling Ht. -2.5' x 2.50 + Average Footcandles at 2.5' Above Floor						
		30.00° 184	0° - 90°	390	100%	12.0'	2 fc	17.6'	1 fc									
		40.00° 96	Total	390	100%	14.0'	1 fc	20.6'	1 fc									
		50.00° 42				16.0'	1 fc	23.5'	0 fc									
		60.00° 21																
		70.00° 9																
		80.00° 2																
		90.00° 1																

Delivered Lumens: **390**
Luminaire Watts: **15.8**
LER: **24.68**

CP at 0deg (Nadir): **250**
CRI: **N/A**

Beam Angle: **74.9**
Spacing Ratio: **1.12**

Lumen Multiplier: **N/A**
CCT Multiplier: **N/A**

SR4MOTD 10LE1 RDD4x 30K MWxSO

CANDLEPOWER CURVE TEST SP-00790_2	INTENSITY CANDELA 0° AZIMUTH	ZONAL LUMENS	SINGLE UNIT: PERFORMANCE INITIAL FOOTCANDLES BASED ON IES BEAM ANGLE				MULTIPLE UNITS: PERFORMANCE 80/50/20% REFLECTANCES INITIAL FOOTCANDLES AND WATTS PER SQUARE FOOT											
			Mounting Height AFF	FC at Center on Floor	Beam Diameter	FC at Beam Edge	Ceiling Height	Fixture Spacing	RCR 2		RCR 4							
		0.00°	0° - 10°	52	6%													
		0.00° 531	0° - 20°	199	25%	5.5'	18 fc	8.2'	8 fc	9'	6'	19	0.38	23	0.54			
		5.00° 529	0° - 30°	412	51%	6.5'	13 fc	9.7'	6 fc	12'	8'	13	0.25	11	0.25			
		10.00° 531	0° - 40°	604	75%	7.5'	9 fc	11.2'	5 fc	16'	12'	4	0.09	5	0.13			
		15.00° 525	0° - 60°	768	96%	8.5'	7 fc	12.7'	4 fc			Delivered Illuminance Rating: (DIR)		50 FC per W/Sq. Ft.		42 FC per W/Sq. Ft.		
		20.00° 504	0° - 80°	802	100%	10.0'	5 fc	15.0'	3 fc			Recessed Mounting Square rooms used for multiple units: - RCR 2: Length & Width = Ceiling Ht. -2.5' x 5.00 - RCR 4: Length & Width = Ceiling Ht. -2.5' x 2.50 + Average Footcandles at 2.5' Above Floor						
		30.00° 400	0° - 90°	803	100%	12.0'	4 fc	18.0'	2 fc									
		40.00° 211	Total	803	100%	14.0'	3 fc	21.0'	1 fc									
		50.00° 89				16.0'	2 fc	24.0'	1 fc									
		60.00° 41																
		70.00° 14																
		80.00° 3																
		90.00° 1																

Delivered Lumens: **803**
Luminaire Watts: **15.9**
LER: **50.50**

CP at 0deg (Nadir): **531**
CRI: **80**

Beam Angle: **74.34**
Spacing Ratio: **1.13**

Lumen Multiplier: **only 10K available**
CCT Multiplier: **only 30K available**



PHOTOMETRIC DATA - 4" ROUND DEEP DOWNLIGHT

SR4MOTA5 LE1 RDD4x AMB MWxGL

CANDLEPOWER CURVE TEST SP-00789_1	INTENSITY CANDELA 0° AZIMUTH	ZONAL LUMENS	SINGLE UNIT: PERFORMANCE INITIAL FOOTCANDLES BASED ON IES BEAM ANGLE				MULTIPLE UNITS: PERFORMANCE 80/50/20% REFLECTANCES INITIAL FOOTCANDLES AND WATTS PER SQUARE FOOT							
			Mounting Height AFF	FC at Center on Floor	Beam Diameter	FC at Beam Edge	Ceiling Height	Fixture Spacing	RCR 2		RCR 4			
	0.00°	24	6%	5.5'	8 fc	8.8'	4 fc	9'	6'	9	0.37	11	0.54	
	0.00°	246		6.5'	6 fc	10.4'	3 fc	12'	8'	6	0.25	5	0.25	
	5.00°	246		7.5'	4 fc	11.9'	2 fc	16'	12'	2	0.09	3	0.12	
	10.00°	248		8.5'	3 fc	13.5'	2 fc	Delivered Illuminance Rating: (DIR)						
	15.00°	247		10.0'	2 fc	15.9'	1 fc						25 FC per W/Sq. Ft.	
	20.00°	244		12.0'	2 fc	19.1'	1 fc	Recessed Mounting Square rooms used for multiple units: - RCR 2: Length & Width = Ceiling Ht. -2.5' x 5.00 - RCR 4: Length & Width = Ceiling Ht. -2.5' x 2.50 + Average Footcandles at 2.5' Above Floor						
	30.00°	208		14.0'	1 fc	22.3'	1 fc							
	40.00°	108		16.0'	1 fc	25.5'	0 fc							
	50.00°	39												
	60.00°	20												
	70.00°	9												
	80.00°	3												
90.00°	1													
		Total	396	100%										

Delivered Lumens: **396**
Luminaire Watts: **15.8**
LER: **25.06**

CP at 0deg (Nadir): **246**
CRI: **N/A**

Beam Angle: **77.08**
Spacing Ratio: **1.21**

Lumen Multiplier: **N/A**
CCT Multiplier: **N/A**

SR4MOTD 10LE1 RDD4x 30K MWxGL

CANDLEPOWER CURVE TEST SP-00790_1	INTENSITY CANDELA 0° AZIMUTH	ZONAL LUMENS	SINGLE UNIT: PERFORMANCE INITIAL FOOTCANDLES BASED ON IES BEAM ANGLE				MULTIPLE UNITS: PERFORMANCE 80/50/20% REFLECTANCES INITIAL FOOTCANDLES AND WATTS PER SQUARE FOOT						
			Mounting Height AFF	FC at Center on Floor	Beam Diameter	FC at Beam Edge	Ceiling Height	Fixture Spacing	RCR 2		RCR 4		
	0.00°	48	6%	5.5'	16 fc	8.7'	8 fc	9'	6'	18	0.38	22	0.54
	0.00°	496		6.5'	12 fc	10.3'	6 fc	12'	8'	12	0.25	10	0.25
	5.00°	498		7.5'	9 fc	11.9'	4 fc	16'	12'	4	0.09	5	0.13
	10.00°	503		8.5'	7 fc	13.5'	3 fc	Delivered Illuminance Rating: (DIR)					
	15.00°	509		10.0'	5 fc	15.9'	2 fc						49 FC per W/Sq. Ft.
	20.00°	508		12.0'	3 fc	19.0'	2 fc	Recessed Mounting Square rooms used for multiple units: - RCR 2: Length & Width = Ceiling Ht. -2.5' x 5.00 - RCR 4: Length & Width = Ceiling Ht. -2.5' x 2.50 + Average Footcandles at 2.5' Above Floor					
	30.00°	425		14.0'	3 fc	22.2'	1 fc						
	40.00°	220		16.0'	2 fc	25.4'	1 fc						
	50.00°	74											
	60.00°	34											
	70.00°	12											
	80.00°	2											
90.00°	0												
		Total	790	100%									

Delivered Lumens: **790**
Luminaire Watts: **15.9**
LER: **49.69**

CP at 0deg (Nadir): **496**
CRI: **80**

Beam Angle: **76.84**
Spacing Ratio: **1.21**

Lumen Multiplier: **only 10L available**
CCT Multiplier: **only 30K available**



PHOTOMETRIC DATA - 4" ROUND DEEP DOWNLIGHT

SR4MOTA 5LE1 RDD4x AMB MWxFG

CANDLEPOWER CURVE TEST SP-00789	INTENSITY CANDELA 0° AZIMUTH	ZONAL LUMENS	SINGLE UNIT: PERFORMANCE INITIAL FOOTCANDLES BASED ON IES BEAM ANGLE				MULTIPLE UNITS: PERFORMANCE 80/50/20% REFLECTANCES INITIAL FOOTCANDLES AND WATTS PER SQUARE FOOT											
			Mounting Height AFF	FC at Center on Floor	Beam Diameter	FC at Beam Edge	Ceiling Height	Fixture Spacing	RCR 2		RCR 4							
		0.00°	0° - 10°	21	6%													
		0.00° 215	0° - 20°	78	24%	5.5'	7 fc	7.9'	3 fc	9'	6'	8	0.37	9	0.54			
		5.00° 213	0° - 30°	157	48%	6.5'	5 fc	9.3'	2 fc	12'	8'	5	0.25	4	0.25			
		10.00° 209	0° - 40°	229	70%	7.5'	4 fc	10.7'	2 fc	16'	12'	3	0.12	2	0.12			
		15.00° 202	0° - 60°	305	93%	8.5'	3 fc	12.1'	1 fc			Delivered Illuminance Rating: (DIR)		20 FC per W/Sq. Ft.		17 FC per W/Sq. Ft.		
		20.00° 190	0° - 80°	325	99%	10.0'	2 fc	14.3'	1 fc			Recessed Mounting Square rooms used for multiple units: - RCR 2: Length & Width = Ceiling Ht. -2.5' x 5.00 - RCR 4: Length & Width = Ceiling Ht. -2.5' x 2.50 + Average Footcandles at 2.5' Above Floor						
		30.00° 145	0° - 90°	326	100%	12.0'	1 fc	17.1'	1 fc									
		40.00° 82	Total	326	100%	14.0'	1 fc	20.0'	1 fc									
		50.00° 41				16.0'	1 fc	22.8'	0 fc									
		60.00° 21																
		70.00° 8																
		80.00° 2																
		90.00° 1																

Delivered Lumens: **326**
Luminaire Watts: **15.8**
LER: **20.63**

CP at 0deg (Nadir): **215**
CRI: **N/A, Amber Light**

Beam Angle: **73.17**
Spacing Ratio: **1.06**

Lumen Multiplier: **N/A**
CCT Multiplier: **N/A**

SR4MOTD 10LE1 RDD4x 30K MWxFG

CANDLEPOWER CURVE TEST SP-00790	INTENSITY CANDELA 0° AZIMUTH	ZONAL LUMENS	SINGLE UNIT: PERFORMANCE INITIAL FOOTCANDLES BASED ON IES BEAM ANGLE				MULTIPLE UNITS: PERFORMANCE 80/50/20% REFLECTANCES INITIAL FOOTCANDLES AND WATTS PER SQUARE FOOT											
			Mounting Height AFF	FC at Center on Floor	Beam Diameter	FC at Beam Edge	Ceiling Height	Fixture Spacing	RCR 2		RCR 4							
		0.00°	0° - 10°	44	6%													
		0.00° 463	0° - 20°	168	24%	5.5'	15 fc	7.6'	7 fc	9'	6'	16	0.38	19	0.54			
		5.00° 459	0° - 30°	338	49%	6.5'	11 fc	8.9'	5 fc	12'	8'	11	0.25	9	0.25			
		10.00° 452	0° - 40°	493	72%	7.5'	8 fc	10.3'	4 fc	16'	12'	5	0.13	4	0.13			
		15.00° 434	0° - 60°	651	95%	8.5'	6 fc	11.7'	3 fc			Delivered Illuminance Rating: (DIR)		42 FC per W/Sq. Ft.		35 FC per W/Sq. Ft.		
		20.00° 404	0° - 80°	685	100%	10.0'	5 fc	13.8'	2 fc			Recessed Mounting Square rooms used for multiple units: - RCR 2: Length & Width = Ceiling Ht. -2.5' x 5.00 - RCR 4: Length & Width = Ceiling Ht. -2.5' x 2.50 + Average Footcandles at 2.5' Above Floor						
		30.00° 301	0° - 90°	687	100%	12.0'	3 fc	16.5'	2 fc									
		40.00° 164	Total	687	100%	14.0'	2 fc	19.3'	1 fc									
		50.00° 82				16.0'	2 fc	22.0'	1 fc									
		60.00° 38																
		70.00° 10																
		80.00° 2																
		90.00° 1																

Delivered Lumens: **687**
Luminaire Watts: **15.9**
LER: **43.21**

CP at 0deg (Nadir): **463**
CRI: **80**

Beam Angle: **72.69**
Spacing Ratio: **1.04**

Lumen Multiplier: **only 10L available**
CCT Multiplier: **only 30K available**

