



8" ROUND DIRECT PRO-FORM SERIES



CO812GV - WALL MOUNT

APPLICATION

8" round x 12" high output cylinder series for general illumination.

FEATURES

Spectrum's Cylinder series provides traditional architectural style with high performance and energy efficient illumination. Rugged design with flexible mounting, finish and LED options make these extremely versatile fixtures. Single stage optical system design delivers smooth general illumination.

FINISH

Multi-stage polyester powder-coat process applied on our dedicated paint lines. See mounting and color pages for standard finishes. All exposed materials are chromate pre-treated to resist corrosion.

ELECTRONICS

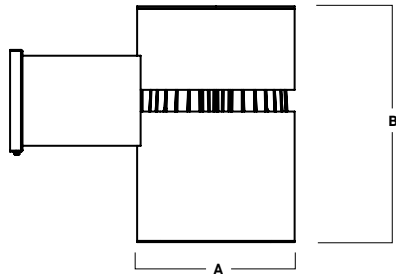
GV LED system features high brightness white Samsung LED's. 3-step MacAdam Ellipse binning. Standard CRI: 85+. Higher CRI, R9 and custom LED configurations are available; consult factory. Variety of electronic 120V/277V and dimming drivers. DMX controls available.

CONSTRUCTION

Extruded seamless aluminum fixture housing. Galvanized steel brackets to resist corrosion. One piece reflector trim spun from .063 thick high purity aluminum and finished to specification.

CODE COMPLIANCE

BAA compliant. ETL certified to meet US and Canadian standards. Suitable for dry or damp locations. Manufactured and tested to UL standards No. 1598/8750.



A	B
8.0 203.2 mm	12.3 312.4 mm

LUMENS / WATTAGE DATA				
PART NUMBER	SOURCE LUMENS ¹	DELIVERED LUMENS ²	SYSTEM WATTS	LPW
CO812GV15L	1500	987	10	99
CO812GV27L	2700	1723	18	96
CO812GV37L	3700	2527	26	97
CO812GV55L	5500	3722	39	95

SERIES	LUMENS ¹	CCT	DRIVER / DIMMING ³	OPTIONS ⁵	TRIM	MOUNTING ⁶	FINISH ⁷
CO812GV	15L	1500 Lm	27K 2700K	EX Electronic Driver, 120V/277V	FS Fuse Holder and Fuse	WM3 Wall Mount 3" Extension WM5 Wall Mount 5" Extension	MW ⁸ Matte White MB ⁸ Matte Black PT ⁸ Platinum Silver CC Custom Color
	27L	2700 Lm	30K 3000K	DS10X 10%, 0-10V, 120V/277V			
	37L	3700 Lm	35K 3500K	DO10X 1%, 0-10V, 120V/277V			
	55L	5500 Lm	40K 4000K	DS2W1 ELV / MLV, 120V			
			50K 5000K	DLTE1 ⁴ Lutron 2-Wire Forward Phase (MLV), 120V			
				DL3EX ⁴ 1% Lutron [®] EcoSystem [®] Fade, 120V/277V			
			ED01X 0.1%, eldoLED 120V/277V				
			DALIX DALI Control				

EXAMPLE: CO812GV37L35KEX/TSG/WM3/MW

NOTES:
 1 Nominal Source Lumens at 35K 2 Nominal Delivered Lumens at 35K with TSG-SO 3 Contact Factory for Additional Options 4 37L Max 5 Contact Factory for Additional Options 6 See Product Options Page For Details
 7 Reference Color Sheet Located on Product Webpage for Full List of Available Colors 8 Standard Finishes



PROJECT: _____
 TYPE: _____



Dimensions and values shown are nominal. Spectrum Lighting continually works to improve products and reserves the right to make changes which may alter the performance or appearance of products.

8" ROUND DIRECT

PRO-FORM SERIES / FIXTURE OPTIONS



STANDARD FINISHES

MW
MATTE WHITE



MB
MATTE BLACK

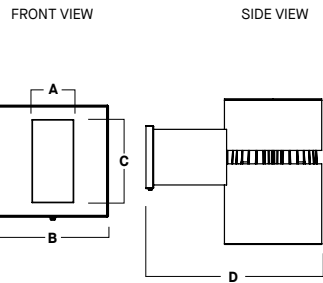
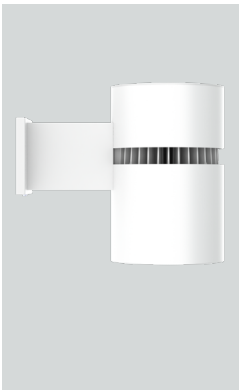


PT
PLATINUM SILVER



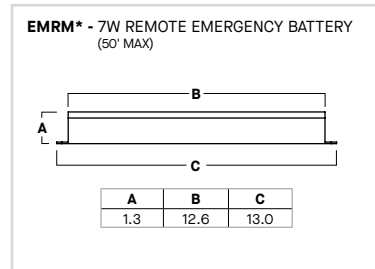
WALL MOUNT DETAIL

WM5
WALL MOUNT 5" EXTENSION



A	B	C	D
2.4	6.4	4.7	13.3
61.0 mm	162.6 mm	119.4 mm	337.8 mm

EMERGENCY BATTERY OPTIONS



*OTHER EM BATTERY SIZES AVAILABLE, CONSULT FACTORY

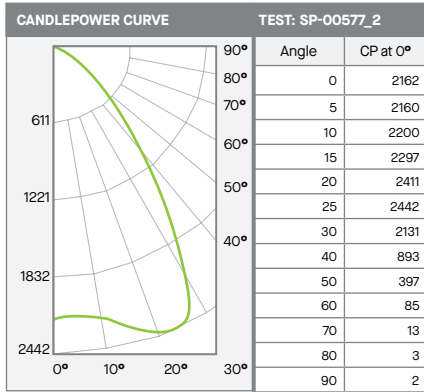
8" ROUND DIRECT

PRO-FORM SERIES / PHOTOMETRIC DATA



C0812GV-55L35K-EX-TSG-S0

55L - 85 CRI



Beam Angle	Lumens	% of Total
0-10	206	6%
0-20	846	23%
0-30	1930	52%
0-40	2911	78%
0-60	3658	98%
0-80	3720	100%
0-90	3722	100%
Total Lumens	3722	100%

Mounting Height*	FC at Center	Diameter of Beam**	FC at Beam**
5.5'	71	7.4'	25
6.5'	51	8.8'	18
7.5'	38	10.1'	13
8.5'	30	11.5'	10
10.0'	22	13.5'	7
12.0'	15	16.2'	5
14.0'	11	18.9'	4
16.0'	8	21.6'	3

* From aperture to horizontal surface below.
** At IESNA defined Beam Angle, to 50% Max. CP.

Delivered Lumens: 3722
Luminaire Watts: 39
LER: 95

CP @ 0° (Nadir): 2162
Beam Angle: 68°
CRI: 84

Spacing Ratio: 1.28
Output Multipliers: 15L x 0.27, 27L x 0.46, 37L x 0.68