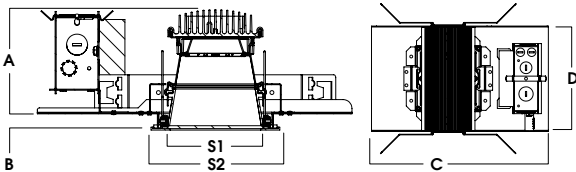
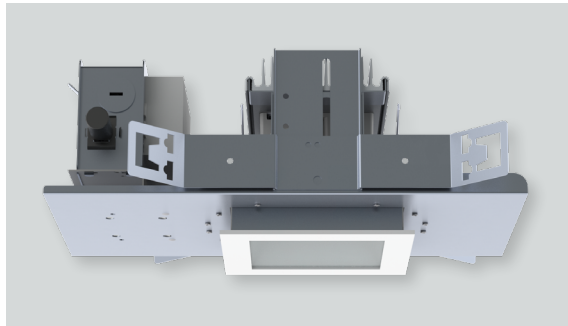
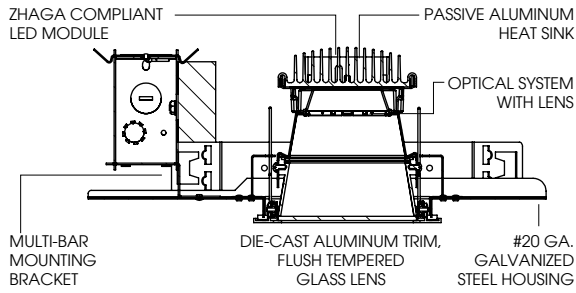


# 6" SQUARE LED FLUSH LENS

## OS SERIES / 4500 LUMENS MAX



A	B	C	D	S1	S2
4.9	0.625	14.2	7.9	5.8	7.5
124.5 mm	15.9 mm	360.7 mm	200.7 mm	147.3 mm	190.5 mm

### SGEF6SQLEDOS - TRIM FLANGE / NON-IC RATED

#### APPLICATION

LED Recessed Flush Lens square aperture downlight with die cast aluminum trim. Wide light distribution and wet location available.

#### FEATURES

Two-stage optical system for smooth light distribution. Zhaga International Standard LED module for ease of maintenance and replacement. Tool-less LED module, driver and J-Box access. Multi-Bar mounting brackets. BH27 Standard mounting bars included. Posi-lock trim retention torsion springs. Integral 0.625" collar.

#### TRIM FINISH

A variety of powdercoat and anodized finishes are available for flange / trim.

#### ELECTRONICS

LED module features high brightness white Osram LEDs. 3-step MacAdam Ellipse binning and CRI 84 minimum. Full range of electronic 120V/277V and dimming drivers.

#### CONSTRUCTION

Housing/frame constructed of #20 ga. galvanized steel to resist corrosion. Die-Cast aluminum trim with tempered glass flush lens. Passive machined aluminum heatsink.

#### CODE COMPLIANCE

BAA Compliant. Non-IC rated. ETL certified to meet US and Canadian standards. Suitable for dry or damp locations. Optional Wet location. LM79/LM80/TM21 data available. Manufactured and tested to UL standards No. 1598/8750.

#### WATTAGE TO LUMENS UPDATE

CURRENT PART NUMBER EXAMPLE	PREVIOUS PART NUMBER EXAMPLE	SOURCE LUMENS <sup>1</sup>	DELIVERED LUMENS <sup>2</sup>	SYSTEM WATTS	LPW
SGEF6SQLEDOS10L	SGEF6SQLEDOS14W	1100	687	11	62
SGEF6SQLEDOS15L	N/A	1500	754	13	58
SGEF6SQLEDOS20L	SGEF6SQLEDOS25W	2000	1121	20	56
SGEF6SQLEDOS30L	SGEF6SQLEDOS35W	3000	1679	28	60
SGEF6SQLEDOS45L	N/A	4500	2468	41	60

SERIES	LUMENS <sup>1</sup>	CCT	DRIVER / VOLTAGE <sup>3</sup>	OPTIONS <sup>4</sup>	TRIM	FINISH	TRIM OPTIONS		
SGEF6SQLEDOS	10L	1100 Lm	27K 2700K	E Electronic Driver	1 120V 2 277V	BH27 <sup>5</sup> 27" Solid Bars H12 12" - 24" Expandable Bars H06 6" - 12" Expandable Bars CB24 24" C-Channel Bars FS Fusing EB Fixture Painted Black CR Corrosion Resistant PR <sup>6</sup> Deep Ceiling Extension GR Goof Ring ZIG <sup>7</sup> ZigBee Module BLU <sup>7</sup> Bluetooth LE EM <sup>8</sup> 7W Emergency Battery Test Switch Remote AMB Anti-Microbial Finish	FC0366OS 6" SQ Flush Casting	MW <sup>9</sup> Matte White MB Matte Black PT Platinum Silver BZ Bronze OB Oil Rubbed Bronze CH Charcoal AS Anodic Sapphire AN Anodic Natural AC Anodic Champagne AZ Anodic Bronze AK Anodic Black AM Anodic Malachite SN Sun Gold CO Copper Metallic GH Graphite CC <sup>10</sup> Custom Color	SO <sup>11</sup> Micro Prism Solite™ Lens FO90 White Optical Acrylic FG Frosted Glass Lens GS Gasket WL Wet Location PF <sup>12</sup> Polished Flange AMB Anti-Microbial Finish
	15L	1500 Lm	30K 3000K	DS10_ 10%, 0-10V					
	20L	2000 Lm	35K 3500K	DO10_ 1%, 0-10V					
	30L	3000 Lm	40K 4000K	DS2W1 1%, ELV/MLV, 120V DLTE1 1% Lutron® 2-Wire Forward Phase, 120V					
	45L	4500 Lm		DL3E_ 1% Lutron® EcoSystem®, Fade EL10_ 1%, eldoLED ED01_ 0.1%, eldoLED DALI_ DALI Control					

EXAMPLE: SGEF4SQLEDOS20L35KE1/FC0244OSMWSO

NOTES:  
 1 Nominal Source Lumens at 35K 2 Nominal Delivered Lumens at 35K with MW SO 3 Contact Factory for Additional Options 4 See Product Options Page for Details 5 Standard Bar Hangers 6 Contact Factory  
 7 Order DS101/2 When Specifying ZIG or BLU 8 Standard EM 9 Standard Finish 10 Contact Factory for Special Finishes 11 Standard Lens 12 Flange and Reflector Same Finish



PROJECT: \_\_\_\_\_  
 TYPE: \_\_\_\_\_



Dimensions and values shown are nominal. Spectrum Lighting continually works to improve products and reserves the right to make changes which may alter the performance or appearance of products.