



3" ROUND DOWNLIGHT N-LINE 3000 LUMENS MAX

UNIVERSAL HOUSINGS WITH INTERCHANGEABLE TRIMS

Spectrum's A Spec 3" recessed round downlight series features a shallow plenum housing and variety of trims for accent and general illumination.

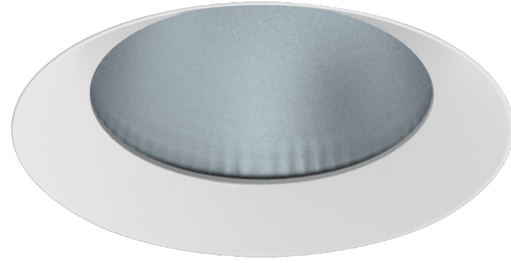
LUMENS AND WATTAGE CHART					
PART NUMBER	LUMENS	SOURCE LUMENS ¹	DELIVERED LUMENS ²	SYSTEM WATTS	LPW
RD3N	XT10L	1000	887	11.1	80
RD3N	XT13L	1300	1195	15	80
RD3N	XT20L	2000	1838	23.7	78
RD3N	XT30L	3000	2757	34.6	80

PROJECT: _____

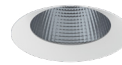
TYPE: _____



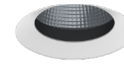
Lensed



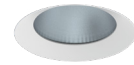
Open



Black Baffle

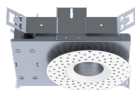


Wall Wash

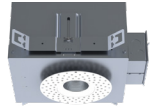


AVAILABLE HOUSING TYPES

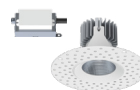
SR3NMO - New Construction / 30L Max



SR3NMI - IC New Construction / 20L Max



SR3NMR - Remodel Construction / 30L Max



Shown with N-Line Plaster Fitter

FIXTURE HOUSING SPECIFICATION

SERIES	LUMENS ¹	DRIVER / DIMMING / VOLTAGE	OPTIONS
SR3NMO SR3NMI ³ SR3NMR	New Construction IC New Construction Remodel Construction	XT10L 1000 Lm XT13L 1300 Lm XT20L⁴ 2000 Lm XT30L^{4,5} 3000 Lm XN BEAM XN10L 1000 Lm XN13L² 1300 Lm	E Electronic Driver DS10 10%, 0-10V DO10 1%, 0-10V DS2W1 ELV/MLV, 120V DLTE1 1% Lutron® 2-Wire Forward Phase, 120V DL3E 1% Lutron® EcoSystem® Fade EL10 1%, eldoLED ED01 0.1%, eldoLED BLU Bluetooth LE
		1 120V 2 277V	H12 12" - 24" Expandable Bars H06 6" - 12" Expandable Bars BH27 27" Solid Bars CB24 24" C-Channel Bars CH24 24" Chicago Bars FS Fusing EM⁶ Integral Emergency Battery EMRM Remote Emergency Battery Pack EB Black Housing PR2⁷ 2" Thick Ceiling Adaptor

- Die-cast aluminum trim with a wide variety of options.
- Shallow plenum housing.
- Universal housing accepts all trim types, including F-Line self-flange.
- Performance Xicato LED module for superior reliability and color consistency.
- Large selection of dimming and control options.
- Interchangeable optics and lenses.
- See SR3D for 1" deep regress trim and SR3S for super shallow plenum.
- 5 year warranty on fixture and electronics.
- 10 year warranty on LED CCT.
- Bluetooth LE option.
- Sustainable fixture.
- Zhaga International Standard LED Module for future upgrades.
- 83CRI 2SDCM, 98CRI 1x2SDCM best in industry.

AVAILABLE TRIM / MODULE TYPES



TRIM / MODULE SPECIFICATION

TRIM	CCT	OPTICS	FINISH	OPTIONS
RD3N RI3N RW3N ⁸	83 CRI 27K 2700K 30K 3000K 35K 3500K 40K 4000K 98 CRI ARTIST ⁴ 27HK 2700K 30HK 3000K 35HK 3500K 40HK 4000K	XN⁹ 11° ND 24° MD 45° WD 54° XW 62°	MW¹⁰ Matte White MB Matte Black PT Platinum Silver BZ Bronze CH Charcoal OB Oil Rubbed Bronze AS Sapphire AM Malachite SN Sun Gold CO Copper Metallic GH Graphite CC¹¹ Custom Color	NL No Lens SO Solite™ Micro Prism Lens LW¹² Wall Wash Spread Lens GL Clear Glass Lens FG Frosted Glass Lens BB Black Baffle PR2⁷ 2" Thick Ceiling Adaptor WL Wet Location



LIGHTSOURCE BY XICATO®



EXAMPLE: SR3NMOXT10LDS2W1/H12/RD3N27KMDMWSO

NOTES:

1 Nominal Source Lumens at Any CCT 2 Nominal Delivered Lumens 83 CRI at Any CCT with WD-MW-GL Trim 3 20L Max 4 For 20L HK and 30L Options Install Fixtures in Accordance with the Following Marked Spacing: (a) Center To Center of Adjacent Luminaires: 600mm (24in); (b) Top of Luminaire to overhead Building Member: 39mm (1.5in); (c) Luminaire Center to side Building Member: 300mm (12in) 5 Not Available with HK 6 Not Available in IC 7 Contact Factory 8 XW Optic Only / LW Lens Only 9 9mm, 13L Max, All XN Draw More Watts Than Other Optics; See Photometry 10 Standard Finish 11 Contact Factory for Special Finishes 12 Standard Lens for Wall Wash

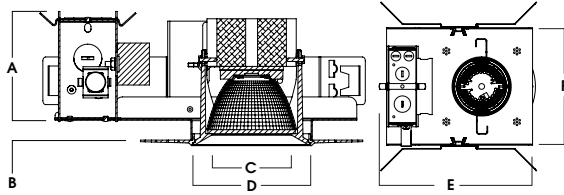
Dimensions and values shown are nominal. Spectrum Lighting continually works to improve products and reserves the right to make changes which may alter the performance or appearance of products.



HOUSING DIMENSIONS

SR3NMO - NEW CONSTRUCTION / 30L MAX

Non-IC rated, thermally protected frame-in kit for new construction. Non-IC designation requires insulation must be minimum of 3" from housing.



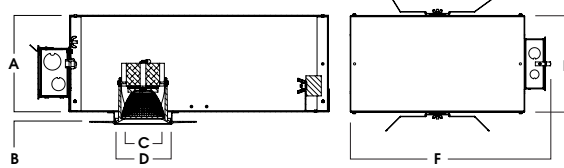
LED	A	B	C	D	E	F
XT10L	3.43	.625	2.5	3.7	9.6	7.6
XT13L	3.77	.625	2.5	3.7	9.6	7.6
XT20L	4.27	.625	2.5	3.7	9.6	7.6
XT30L	4.27	.625	2.5	3.7	9.6	7.6

Fixture Weight: 4.0 lbs

Ceiling Cutout: Ø 4"

SR3NMI - IC NEW CONSTRUCTION / 20L MAX

IC rated frame-in kit for new construction with direct insulation contact and CCEA (Chicago Plenum) compatibility.



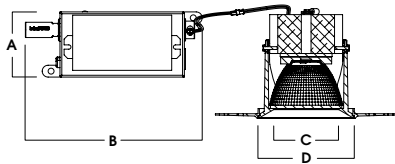
A	B	C	D	E	F
6.4	.625	2.5	3.78	9.5	10L-13L: 13.2
162.6 mm	15.9 mm	63.5 mm	96.0 mm	241.3 mm	20L: 19.2

Fixture Weight: 5.0 lbs

Ceiling Cutout: Ø 4"

SR3NMR - REMODEL CONSTRUCTION / 30L MAX

Non-IC rated frame-in kit for existing construction. Non-IC designation requires insulation must be minimum of 3" from housing.



A	B	C	D
2.8	7.5	2.5	3.78
71.1 mm	190.5 mm	63.5 mm	96.0 mm

Fixture Weight: 2.0 lbs

Ceiling Cutout: Ø 3 3/4"

FEATURES

FRAME-IN KIT

Precision Die-formed 20 gauge galvanized steel housing and integral junction box with (3) 5/8", (3) 7/8" and (2) 1 1/8" knockouts. Junction box capacity: 8 12AWG rated for 90 °C. Tool-less driver and junction box access for ease of maintenance. Post-loc trim retention springs for 5/8"-1" ceiling thickness. Use PR2 for up to 2" thick ceiling. For thicker ceilings consult factory.

MOUNTING

A variety of mounting bars are available (excluding remodel). Ceiling materials must be rigid to support luminaire frame.

DRIVER

Several constant current dimming drivers are available. Power factor >.9 typical, 50/60Hz, 350-1050mA.

TRIM

Flangeless, one-piece, die-cast aluminum finished in a variety of powdercoat options. Trim option for trimless plaster (Z), wood (W) or stone (S) ceiling options. For self-flange options see F-Line.

REMODEL

Features tethered power supply and junction box with sheathed wire.

LUMEN OUTPUT

XN narrow optic restricted to 1300 lumens max. All other optics and kelvins maintain 1000-3000 lumens range.

LED

Zhaga compatible high performance Xicato module. Proprietary phosphor technology provides consistent and stable color with CCT control of +/- 100K over life of light engine.

EMERGENCY

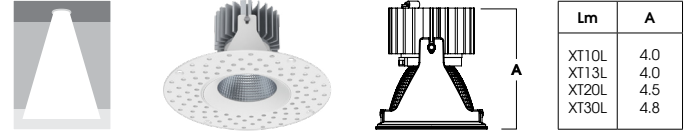
Integral or remote 7W emergency battery options are available. Operates for 90 minutes and produces nominal 450 lumens.

BLUETOOTH

Integral Bluetooth LE option is available for dimming to .1%, grouping, remote access, electrical feedback and beacon technology.

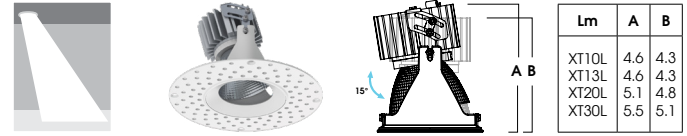
TRIM / MODULE DATA

RD3N - DOWNLIGHT MODULE



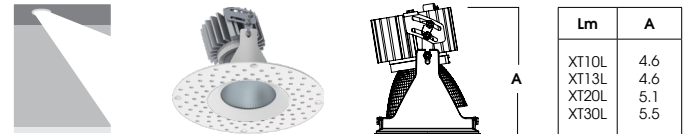
Lm	A
XT10L	4.0
XT13L	4.0
XT20L	4.5
XT30L	4.8

RI3N - 15° ADJUSTABLE MODULE



Lm	A	B
XT10L	4.6	4.3
XT13L	4.6	4.3
XT20L	5.1	4.8
XT30L	5.5	5.1

RW3N - WALL WASH MODULE



Lm	A
XT10L	4.6
XT13L	4.6
XT20L	5.1
XT30L	5.5

FUSING

Integral optional fast blow fuse with fuse holder.

COLOR VARIATION

Standard CRI (83) within 2-step MacAdam Ellipse. High CRI (98) within 1x2-step MacAdam Ellipse.

LISTINGS

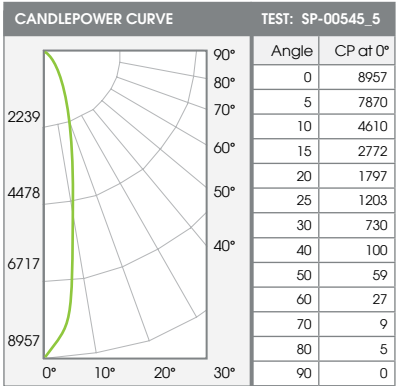
ETL Certified to meet US and Canadian Standards. Manufactured and tested to UL standard No. 1598/8750. BAA compliant. Wet location (WL), City of Chicago Environmental Air (CCEA), and Insulated Ceiling (IC) options available.

WARRANTY

Fixtures, LEDs and drivers carry 5 year Spectrum warranty, as well as individual OEM warranty. Warranty is 5 years from date of manufacturing. LED system rated for operation in an ambient temperatures up to 25 °C.

PHOTOMETRIC DATA - 3" ROUND N-LINE

SR3NMx-XT30L-E1-RD3x-xxK-ND-MW-GL



ZONAL LUMENS		
0-10	648	27%
0-20	1462	62%
0-30	2021	85%
0-40	2244	95%
0-60	2341	99%
0-80	2365	100%
0-90	2368	100%
Total Lumens	2368	100%

30L NARROW - 83 CRI

SINGLE UNIT: PERFORMANCE INITIAL FOOTCANDLES AND BEAM ANGLE DIAMETERS			
Mounting Height*	FC at Center	Diameter of Beam**	FC at Beam**
5.5'	296	2.0'	143
6.5'	212	2.4'	102
7.5'	159	2.8'	77
8.5'	124	3.2'	60
10'	90	3.7'	43
12'	62	4.5'	30
14'	46	5.2'	22
16'	35	6.0'	17

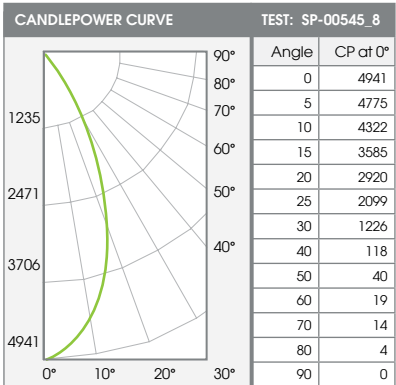
MULTIPLE UNITS: PERFORMANCE 80/50/20% REFLECTANCES INITIAL FOOTCANDLES AND WATTS PER SQUARE FOOT					
Ceiling Height	Fixture Spacing	RCR 8		RCR 10	
		FC*	W/Sq. Ft.	FC*	W/Sq. Ft.
8'	2.5'	75	1.38	55	1.08
12'	4'	50	0.92	49	0.96
16'	5'	42	0.78	41	0.81
Delivered Illuminance Rating: (DIR)		54 FC per W/Sq. Ft.		50 FC per W/Sq. Ft.	

Square Rooms used for Multiple Units:
 - RCR 8: Length & Width = Ceiling Ht. x 1.25
 - RCR 10: Length & Width = Ceiling Ht. x 1.0
 * Average Footcandles at floor

Delivered Lumens: 2368 CP @ 0° (Nadir): 8957 Beam Angle: 21.1°
 Luminaire Watts: 34.6 CRI: 83 Spacing Ratio: 0.36

FC Multipliers: 10L x 0.322, 13L x 0.433, 20L x 0.667
 W/Sq. Ft. Multipliers: 10L x 0.320, 13L x 0.433, 20L x 0.685

SR3NMx-XT30L-E1-RD3x-xxK-MD-MW-GL



ZONAL LUMENS		
0-10	442	15%
0-20	1447	51%
0-30	2394	84%
0-40	2751	96%
0-60	2828	99%
0-80	2854	100%
0-90	2857	100%
Total Lumens	2857	100%

30L MEDIUM - 83 CRI

SINGLE UNIT: PERFORMANCE INITIAL FOOTCANDLES AND BEAM ANGLE DIAMETERS			
Mounting Height*	FC at Center	Diameter of Beam**	FC at Beam**
5.5'	163	4.6'	69
6.5'	117	5.5'	50
7.5'	88	6.3'	37
8.5'	68	7.1'	29
10'	49	8.4'	21
12'	34	10.1'	15
14'	25	11.7'	11
16'	19	13.4'	8

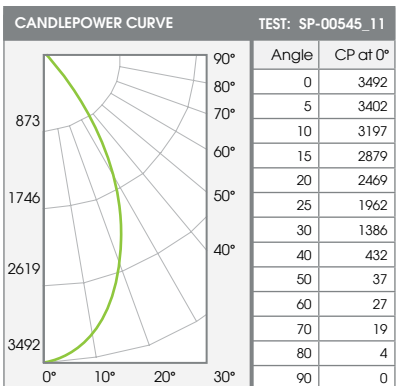
MULTIPLE UNITS: PERFORMANCE 80/50/20% REFLECTANCES INITIAL FOOTCANDLES AND WATTS PER SQUARE FOOT					
Ceiling Height	Fixture Spacing	RCR 4		RCR 6	
		FC*	W/Sq. Ft.	FC*	W/Sq. Ft.
8'	5'	60	0.78	54	0.79
12'	8'	47	0.62	53	0.78
16'	10'	26	0.35	30	0.44
Delivered Illuminance Rating: (DIR)		75 FC per W/Sq. Ft.		68 FC per W/Sq. Ft.	

Square Rooms used for Multiple Units:
 - RCR 4: Length & Width = Ceiling Ht. x 2.5
 - RCR 6: Length & Width = Ceiling Ht. x 1.66
 * Average Footcandles at floor

Delivered Lumens: 2857 CP @ 0° (Nadir): 4941 Beam Angle: 45.5°
 Luminaire Watts: 34.6 CRI: 83 Spacing Ratio: 0.72

FC Multipliers: 10L x 0.322, 13L x 0.433, 20L x 0.667
 W/Sq. Ft. Multipliers: 10L x 0.320, 13L x 0.433, 20L x 0.685

SR3NMx-XT30L-E1-RD3x-xxK-WD-MW-GL



ZONAL LUMENS		
0-10	318	12%
0-20	1120	41%
0-30	2008	73%
0-40	2550	93%
0-60	2719	99%
0-80	2755	100%
0-90	2757	100%
Total Lumens	2757	100%

30L WIDE - 83 CRI

SINGLE UNIT: PERFORMANCE INITIAL FOOTCANDLES AND BEAM ANGLE DIAMETERS			
Mounting Height*	FC at Center	Diameter of Beam**	FC at Beam**
5.5'	115	5.6'	46
6.5'	83	6.6'	33
7.5'	62	7.6'	25
8.5'	48	8.7'	19
10'	35	10.2'	14
12'	24	12.2'	10
14'	18	14.3'	7
16'	14	16.3'	5

MULTIPLE UNITS: PERFORMANCE 80/50/20% REFLECTANCES INITIAL FOOTCANDLES AND WATTS PER SQUARE FOOT					
Ceiling Height	Fixture Spacing	RCR 2		RCR 4	
		FC*	W/Sq. Ft.	FC*	W/Sq. Ft.
8'	6'	64	0.78	56	0.78
12'	9'	28	0.35	25	0.35
16'	12'	16	0.20	14	0.20
Delivered Illuminance Rating: (DIR)		81 FC per W/Sq. Ft.		71 FC per W/Sq. Ft.	

Square Rooms used for Multiple Units:
 - RCR 2: Length & Width = Ceiling Ht. x 5.0
 - RCR 4: Length & Width = Ceiling Ht. x 2.5
 * Average Footcandles at floor

Delivered Lumens: 2757 CP @ 0° (Nadir): 3492 Beam Angle: 53.7°
 Luminaire Watts: 34.6 CRI: 83 Spacing Ratio: 0.84

FC Multipliers: 10L x 0.322, 13L x 0.433, 20L x 0.667
 W/Sq. Ft. Multipliers: 10L x 0.320, 13L x 0.433, 20L x 0.685