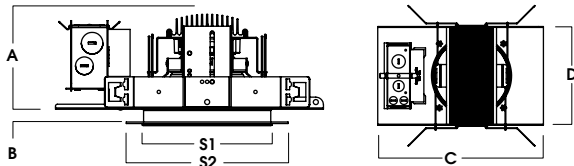
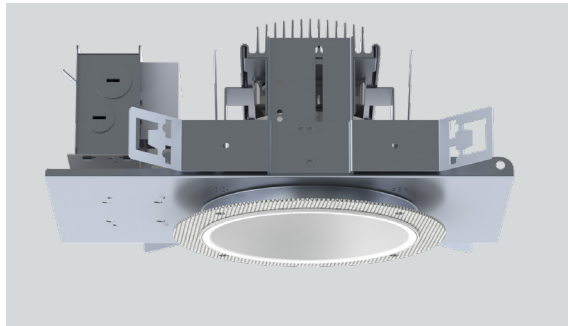
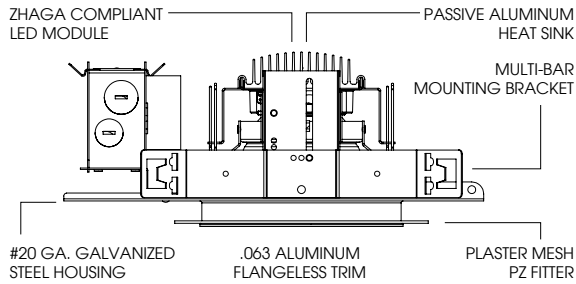


6" ROUND FLANGELESS DOWNLIGHT

FX SERIES / 4000 LUMENS MAX

recessed
fixtures



A	B	C	D	S1	S2
4.7	.625	13.3	7.9	5.8	8.0
119.4 mm	15.9 mm	337.8 mm	200.7 mm	147.3 mm	203.2 mm

SGE6PZLEDFX - FLANGELESS / NON-IC RATED

APPLICATIONS

FX series 6" diameter downlight with flangeless trim, designed for general downlighting with smooth light distribution.

FEATURES

Shallow plenum construction. Auto dim thermal protector for long term reliability. Zhaga international standard LED module for ease of maintenance and future replacement. Tool-less LED module, driver, and J-Box access. Multi-Bar mounting brackets, fit a variety of mounting bars. Posi-lock trim retention torsion springs. Integral 5/8" (.625) collar, works in ceiling up to 1" Deep. BH27 Standard mounting bars included. Intended for Non-IC new construction.

FINISH

Variety of powdercoat and anodized finishes available. Plaster mesh fitter included.

ELECTRONICS

LED system features high efficacy Philips LEDs. Standard CRI is >80. Drivers are overload and short circuit protected as well as thermally regulated. Sound rating A. L70 at >60,000 hours.

CONSTRUCTION

Housing/frame constructed of #20 ga. galvanized steel to resist corrosion. Flangeless one piece trim spun from 0.063" thick high purity aluminum and finished to specification. Passive machined aluminum heatsink.

CODE COMPLIANCE

Energy Star pending and BAA Compliant. Non-IC New Construction only. ETL certified to meet US and Canadian standards. Suitable for dry or damp locations. LM79/LM80 data available. Manufactured and tested to UL standards No. 1598/8750.

WATTAGE / LUMENS DATA

PART NUMBER	SOURCE LUMENS ¹	DELIVERED LUMENS ²	SYSTEM WATTS	LPW
SGE6PZLEDFX10L	1000	709	9	77
SGE6PZLEDFX15L	1500	1081	13	83
SGE6PZLEDFX20L	2000	1441	17	85
SGE6PZLEDFX30L	3000	2126	25	85
SGE6PZLEDFX40L	4000	2871	35	83

SERIES	LUMENS ¹	CCT	DRIVER / VOLTAGE	OPTIONS	TRIM	FINISH	TRIM OPTIONS
SGE6PZLEDFX	10L 1000 Lm	27K 2700K	DX 1%, 0-10V, 120V/277V	BH27 ³ 27" Solid Bars	NF6223FX	MW	SO ⁷ Micro Prism Solite™ Lens
	15L 1500 Lm	30K 3000K		H12 12" - 24" Expandable Bars		MB	
	20L 2000 Lm	35K 3500K		H06 6" - 12" Expandable Bars		PT	
	30L 3000 Lm	40K 4000K		CB24 24" C-Channel Bars		CC ⁶ Custom Color	
	40L 4000 Lm			EM Integral Emergency Battery			
			EMRM ⁴ Remote Emergency Battery Pack				
			FS Fusing				
			CR Corrosion Resistant				
			PR ⁵ Deep Ceiling Extension				

EXAMPLE: SGE6PZLEDFX30L30KDX/BH27/NF6223FXMWSO

NOTES:

1 Nominal Source Lumens at 35K 2 Nominal Delivered Lumens at 35K with MW-SO Trim 3 Standard Bar Hangers 4 Installer Responsible for EM Access 5 Contact Factory 6 Contact Factory for Special Finishes 7 Standard Lens



PROJECT: _____

TYPE: _____



Dimensions and values shown are nominal. Spectrum Lighting continually works to improve products and reserves the right to make changes which may alter the performance or appearance of products.