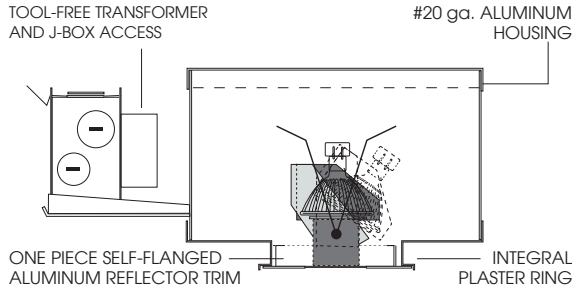


recessed fixtures



3.5" MINI SQUARE VERSA LIGHT

MR16 SERIES / 65 WATT MAX INC



SGDG4SQF

APPLICATION

3.5" square Versa light MR16 for flush fit plaster installations.

FEATURES

Housing accepts a variety of trims. Trim rotates 360° for easy alignment, lamp tilts and locks to 45°. Shallow plenum fixture design fits most ceiling applications. Tool-less transformer and J-box access. Multi-bar adjustable mounting brackets. Posi-lock trim retention springs. Integral 0.625" collar, with Deep Ceiling Extension (PR) consult factory. Maximum wattage label (MWL) for low wattage Halogen or LED lamps.

TRIM FINISH

A variety of architectural powdercoat and colors are available on reflector/trim. Plaster mesh fitter included.

ELECTRONICS

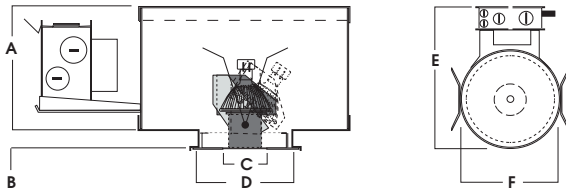
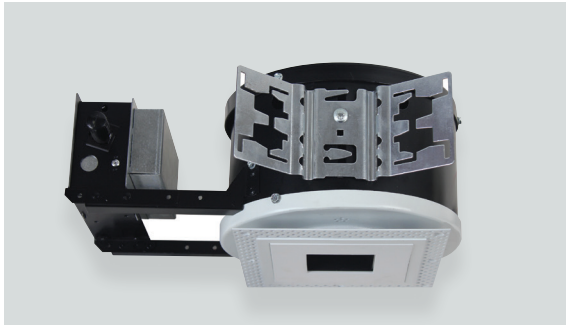
Electronic 120v transformer is standard. 277v electronic, 120 or 277v magnetic, 120v LED rated electronic and remote transformer options. High temperature rated porcelain GU10 socket.

CONSTRUCTION

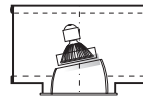
Housing constructed of 20 ga. spun and fabricated are aluminum. Reflectors spun from .063 high purity aluminum and finished to specification.

LABELS

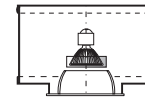
ARRA Compliant. ETL listed for damp locations. Manufactured and tested to UL Standard No. 1598.



A	B	C	D	E	F
4.7 120.6 mm	0.6 15.8 mm	2.5 114.3 mm	4.5 114.3 mm	13.0 330.2 mm	8.0 203.2 mm



LENSED MINI SQUARE WALL WASH
FW4.5SQPZ



LENSED MINI SQUARE WET LOCATION
LW4.5SQPZ

PZ FITTER WITH PLASTER MESH



RECESSED HOUSING SPECIFICATION			TRIM SPECIFICATION										
SERIES	TRANSFORMER	OPTIONS	TRIMLESS ³			TRIM / FINISH ⁴				TRIM OPTIONS ⁹		FIXTURE LAMPING	
SGDG4SQF	E1	Electronic, 120v	PZ4.5SQ	Trimless 4" Square Fitter	FW4.5SQPZ ²	White Sq. w/Black	SG ⁸	Semi-Diffuse	GL ¹⁰	Clear Glass Lens	LAMP	MAX WATT	
	E2	Electronic, 277v											SW4.5SQPZ ²
	MGN1	Magnetic Transformer, 120v	BH6	Expandable Bar Hangers, 6" - 12"	WW4.5SQPZ ²	Interior Shallow Downlight	MW	Matte White	SO	Micro Prism Solite™ Lens	MR16	65W	
	MGN2	Magnetic Transformer, 277v	BH12	Expandable Bar Hangers, 12" - 24"									LW4.5SQPZ ²
	E1LED	Transformer for Use with LED MR16 Lamps 120V	CB24	C-Channel Bars	AW4.5SQPZ ²	Adjustable	AS	Anodic Sapphire	LN16	See Recessed Fixtures/Lens Options for Lens, Louver and Filter Accessories			
	NTR	No Transformer for Remote Transformer Application	CR	Corrosion Resistant			PT	Platinum Silver					
	GU10	GU10 120V Socket No Transformer	FS	Fusing			OB	Oil Rubbed Bronze					
			MWL(**)	Maximum Wattage Dedicated Transformer and Label			CH	Charcoal					
			PR ²	Deep Ceiling Extension			AS	Anodic Sapphire					
			TBC	T-bar Clips			AM	Anodic Malachite					
			TR	Top Relamping Option			SN	Sun Gold					
			RTT150E1	150W Remote Transformer			CO	Copper Metallic					
			RTT300E1	300W Remote Transformer			GH	Graphite					
							CC	Custom Color					

EXAMPLE: SGDG4SQFE1/PZ4.5SQ/FW4.5SQPZ GL

NOTES:

- 1 20W, 37W, 50W 2 Contact Factory 3 PZ4RP - Flush Plaster Mesh Fitter Required 4 Contact Factory for Special Finishes 5 2.0 Regressed 6 0.5 Regressed 7 Wet Location 8 Standard Finish 9 Contact Factory for Special Lenses/Louvers 10 Standard Lens

Dimensions shown are nominal. Spectrum Lighting is continually improving products and reserves the right to make changes that will not alter performance or appearance with or without written notice.



PROJECT:	TYPE:
CAT. NO.:	

LED MR16

