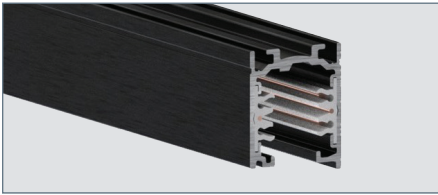




OT/HOT ARCHITECTURAL TRACK & ACCESSORIES

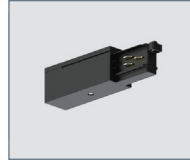
SURFACE/SUSPENDED - 120V or 277V - 2 CIRCUIT / 2 NEUTRAL 0-10V CONTROL



OT/HOT TRACK

One Track surface or suspended track system for 0-10V or DALI controllability. Specify 120V or 277V systems.

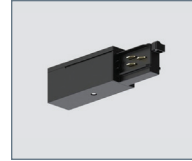
- OTS2W4** - 4' Track, 120V, White
- HOTS2W4** - 4' Track, 277V, White
- OTS2W8** - 8' Track, 120V, White
- HOTS2W8** - 8' Track, 277V, White
- OTS2B4** - 4' Track, 120V, Black
- HOTS2B4** - 4' Track, 277V, Black
- OTS2B8** - 8' Track, 120V, Black
- HOTS2B8** - 8' Track, 277V, Black



END-FEED

Polarity Right / Ground Left

- OT01W2** - 120V, White
- HOT01W2** - 277V, White
- OT01B2** - 120V, Black
- HOT01B2** - 277V, Black



END-FEED

Polarity Left / Ground Right

- OT02W2** - 120V, White
- HOT02W2** - 277V, White
- OT02B2** - 120V, Black
- HOT02B2** - 277V, Black



MIDDLE FEED

Polarity Ridge

- OT10W2** - 120V, White
- HOT10W2** - 277V, White
- OT10B2** - 120V, Black
- HOT10B2** - 277V, Black



"L" FEED

Polarity Exterior / Ground Exterior

- OT11W2** - 120V, White
- HOT11W2** - 277V, White
- OT11B2** - 120V, Black
- HOT11B2** - 277V, Black



"L" FEED

Polarity Exterior / Ground Interior

- OT12W2** - 120V, White
- HOT12W2** - 277V, White
- OT12B2** - 120V, Black
- HOT12B2** - 277V, Black



"T" FEED

Polarity Exterior Left / Ground Interior Right

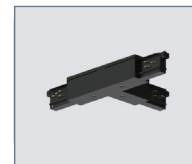
- OT13W2** - 120V, White
- HOT13W2** - 277V, White
- OT13B2** - 120V, Black
- HOT13B2** - 277V, Black



"T" FEED

Right / Ground Interior Left

- OT14W2** - 120V, White
- HOT14W2** - 277V, White
- OT14B2** - 120V, Black
- HOT14B2** - 277V, Black



"T" FEED

Polarity Interior Left / Ground Exterior Right

- OT15W2** - 120V, White
- HOT15W2** - 277V, White
- OT15B2** - 120V, Black
- HOT15B2** - 277V, Black



"T" FEED

Polarity Interior Right / Ground Exterior Left

- OT16W2** - 120V, White
- HOT16W2** - 277V, White
- OT16B2** - 120V, Black
- HOT16B2** - 277V, Black



"X" FEED

Not to be used with trimless track

- OT17W2** - 120V, White
- HOT17W2** - 277V, White
- OT17B2** - 120V, Black
- HOT17B2** - 277V, Black



JOINTING CONNECTOR

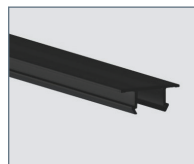
Polarity Ridge

- OT03W** - 120V, White
- HOT03W** - 277V, White
- OT03B** - 120V, Black
- HOT03B** - 277V, Black



END CAP FOR TRACK WITH LOCKING SCREW

- OT04W** - 120V/277V, White
- OT04B** - 120V/277V, Black



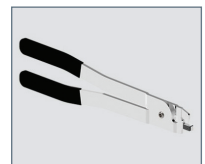
ADDITIONAL COVER STRIP FOR TRACK

- OTGPW4** - 4', 120V/277V, White
- OTGPB4** - 4', 120V/277V, Black
- OTGPW8** - 8', 120V/277V, White
- OTGPB8** - 8', 120V/277V, Black



SWAG HOOK

- OTHW** - 120V or 277V, White
- OTHB** - 120V or 277V, Black



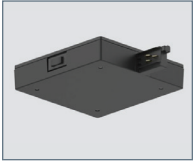
CUTTING TOOL FOR TRACK CONDUCTORS

- OTT** - Cutting Tool For Track Conductors

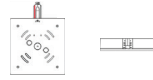
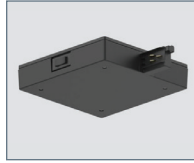


CURRENT LIMITING DEVICES

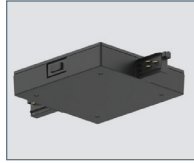
CIRCUIT BREAKER SOLD SEPARATELY



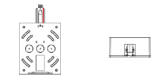
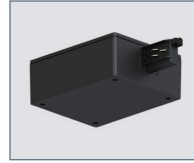
OT01CLW2 - 120V, White
HOT01CLW2 - 277V, White
OT01CLB2 - 120V, Black
HOT01CLB2 - 277V, Black



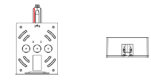
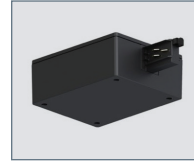
END FEED
 Polarity Ridge
OT02CLW2 - 120V, White
HOT02CLW2 - 277V, White
OT02CLB2 - 120V, Black
HOT02CLB2 - 277V, Black



IN-LINE FEED
 Polarity Ridge
OT10CLW2 - 120V, White
HOT10CLW2 - 277V, White
OT10CLB2 - 120V, Black
HOT10CLB2 - 277V, Black



SHORT END-FEED
 Polarity Interior / Floor View
OT01CLSW2 - 120V, White
HOT01CLSW2 - 277V, White
OT01CLSB2 - 120V, Black
HOT01CLSB2 - 277V, Black



SHORT END FEED
 Polarity Exterior / Floor View
OT02CLSW2 - 120V, White
HOT02CLSW2 - 277V, White
OT02CLSB2 - 120V, Black
HOT02CLSB2 - 277V, Black



END CAP FOR CURRENT LIMITING DEVICES
OT04CLW - 120V/277V, White
OT04CLB - 120V/277V, Black

AMPERAGE

Consult Factory for Other Wattages

- 1A** - 120V-120W
- 2A** - 120V-210W
- 5A** - 120V-500W