



Adaptor must match track-use this chart to select adaptor.  
adaptor will be wired to track head.

|                         | 1 CIRCUIT    | 2 CIRCUIT     |                | 3 CIRCUIT    | 3 CIRCUIT DIMMING |
|-------------------------|--------------|---------------|----------------|--------------|-------------------|
|                         | 1 NEUTRAL    | 2 NEUTRAL     |                | 1 NEUTRAL    | 1 NEUTRAL         |
| <b>SERIES NUMBER</b>    | <b>GES</b>   | <b>TEK</b>    | <b>HTEK</b>    | <b>XTS</b>   | <b>GNC</b>        |
| Voltage                 | 120          | 120           | 277            | 120          | 120               |
| <b>REQUIRED ADAPTOR</b> | <b>GES66</b> | <b>TEK100</b> | <b>HTEK100</b> | <b>GA100</b> | <b>GA100</b>      |

**DIMMING**

|  | 2 CIRCUIT   |                  |                   | 3 CIRCUIT        | 3 CIRCUIT DIMMING |
|--|---|------------------|-------------------|------------------|-------------------|
|  | 1 NEUTRAL   | 2 NEUTRAL        |                   | 1 NEUTRAL        | 1 NEUTRAL         |
| <b>SERIES NUMBER</b>   | <b>GES</b>  | <b>TEK</b>       | <b>HTEK</b>       | <b>XTS</b>       | <b>GNC</b>        |
| Voltage  | 120   | 120              | 277               | 120              | 120               |
| <b>TRACK LENGTHS</b>   | <b>SPECIFY FINISH:</b> Natural Aluminum (-1) Available for track lengths only; Black (-2); White (-3)   |                  |                   |                  |                   |
| 4' Length  | GES204  | TEK44 / *FTP44   | HTEK44 / *FTP44   | XTS44 / *FTP44   | GNC44             |
| 8' Length  | GES208  | TEK48 / *FTP48   | HTEK48 / *FTP48   | XTS48 / *FTP48   | GNC48             |
| 12' Length   | GES212  | TEK412 / *FTP412 | HTEK412 / *FTP412 | XTS412 / *FTP412 | GNC412            |
| <b>ACCESSORIES</b>   | <b>SPECIFY FINISH:</b> Black (-2); White (-3) *FTP (Recessed Track Jacket-Order Separately if Required) |                  |                   |                  |                   |
| Live End   | GES11   | TEK11            | HTEK11            | XTS11            | GNC11             |
| End Cap  | GES41   | TEK41            | HTEK41            | XTS41            | GNC41             |
| Linear Coupler   | GES21   | TEK21            | HTEK21            | XTS21            | GNC21             |
| Conduit End Feed   | GES13   | N/A              | N/A               | N/A              | N/A               |
| Live Middle Feed   | GES14   | TEK14            | HTEK14            | XTS14            | GNC14             |
| Feedable L   | GES34   | TEK34            | HTEK34            | XTS34            | GNC34             |
| Feedable T   | GES40   | TEK40            | HTEK40            | XTS40            | GNC40             |
| Feedable X   | GES38   | TEK38            | HTEK38            | XTS38            | GNC38             |
| Floating Feed  | GES67   | N/A              | N/A               | N/A              | N/A               |
| Conduit Continuation   | GES13 & GES16   | N/A              | N/A               | N/A              | N/A               |
| Flex Connect   | GES23   | N/A              | N/A               | N/A              | N/A               |
| Monopoint***   | GES70   | N/A              | N/A               | N/A              | N/A               |
| <b>TRACK MOUNTING</b>  | <b>SPECIFY FINISH:</b> Black (-2); White (-3)   |                  |                   |                  |                   |
| Stem Kit   | GEA37 / ( )   | SPUS / ( )       | SPUS / ( )        | SPUS / ( )       | SPUS / ( )        |
| End Feed Suspension  | GEA11   | SP4E             | SP4E              | SP4E             | SP4E              |
| Universal Feed Suspension  | GEA10   | SP4P             | SP4P              | SP4P             | SP4P              |
| L Feed Suspension  | N/A   | SP4L             | SP4L              | SP4L             | SP4L              |
| T Feed Suspension  | N/A   | SP4T             | SP4T              | SP4T             | SP4T              |
| X Feed Suspension  | N/A   | SP4X             | SP4X              | SP4X             | SP4X              |
| TBAR Clip  | GEA7  | SKBT12           | SKBT12            | SKBT12           | SKBT12            |
| Cable Clip   | N/A   | SKB10            | SKB10             | SKB10            | SKB10             |
| Threaded Rod Mounting Clip   | GEA6  |                  |                   |                  |                   |
| Ceiling Cup for Cable Rod*   | N/A   | SKB30            | SKB30             | SKB30            | SKB30             |
| Cable Lengths*   | N/A   | SKB34 (*)        | SKB34 (*)         | SKB34 (*)        | SKB34 (*)         |
| <b>SPECIFY FINISH:</b> Black (-2); White (-3) / ( ) : <b>SPECIFY STEM LENGTH</b> / (*) : <b>SPECIFY CABLE LENGTH, 5' OR 9'</b> |   |                  |                   |                  |                   |

Dimensions shown are nominal. Spectrum Lighting is continually improving products and reserves the right to make changes that will not alter performance or appearance with or without written notice.



|                 |              |
|-----------------|--------------|
| <b>PROJECT:</b> | <b>TYPE:</b> |
| <b>CAT.</b>     |              |

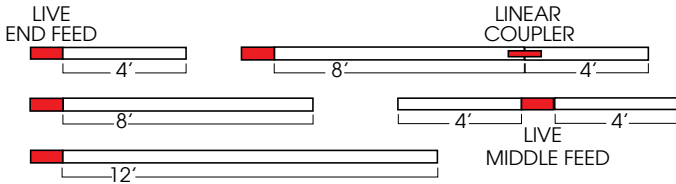




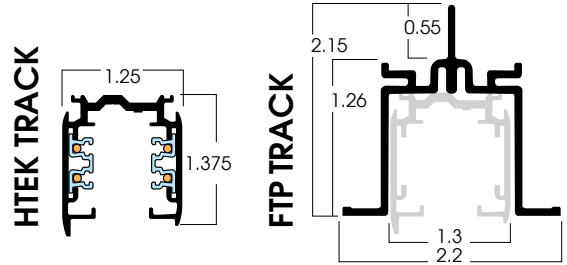
**USE HTEK100 ADAPTOR**

**COMPONENTS OF HTEK Track INSTALLATION**

TYPICAL TRACK INSTALLATIONS



- Architectural Grade.
- ISO 9002 Quality.
- Low Profile, easy installation.
- Integral Suspension rail.
- Copper connector/ polycarbonate components.
- UL Listed.

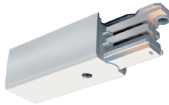


| DESCRIPTION | PART #  | PART #   |
|-------------|---------|----------|
|             | Track   | RECESSED |
| 4' Track    | HTEK44  | FTP44    |
| 8' Track    | HTEK48  | FTP48    |
| 12' Track   | HTEK412 | FTP412   |

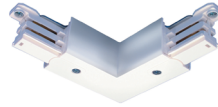
**SPECIFY FINISH:** Natural Aluminum (-1) Available for track lengths only; Black (-2); White (-3)

**ACCESSORIES FOR HTEK Track INSTALLATION**

**LIVE END**  
HTEK11



**FEEDABLE "L" CONNECTOR**  
HTEK34



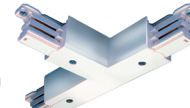
**LIVE MIDDLE FEED**  
HTEK14



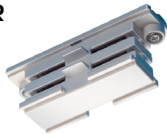
**DEAD END**  
HTEK41



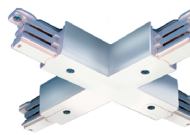
**FEEDABLE "T" CONNECTOR**  
RIGHT-HTEK39, LEFT-HTEK40



**LINEAR COUPLER**  
HTEK21



**FEEDABLE "X" CONNECTOR**  
HTEK38



**SPECIFY FINISH:** Black (-2); White (-3)

**MOUNTING ACCESSORIES FOR HTEK TRACK**

**STEM KIT for GES/GET SPUS ( )**  
Specify Stem Length  
12", 18", 24", 48"



**T-BAR CLIP**  
SKBT12



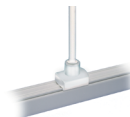
**CABLE CLIP**  
SKB12



**END FEED SUSPENSION**  
SP4E



**UNIVERSAL**  
SP4P



**OTHER ACCESSORIES NOT SHOWN**

| DESCRIPTION       | PART #    |
|-------------------|-----------|
| Ceiling Cup Cable | SKB30     |
| *Cable Lengths    | SKB34 (*) |

(\*5', 9')

**SPECIFY FINISH:** Black (-2); White (-3)

Dimensions and values shown are nominal. Spectrum Lighting continually works to improve products and reserves the right to make changes which may alter the performance or appearance of products.

|                  |              |
|------------------|--------------|
| <b>PROJECT:</b>  | <b>TYPE:</b> |
| <b>CAT. NO.:</b> |              |

