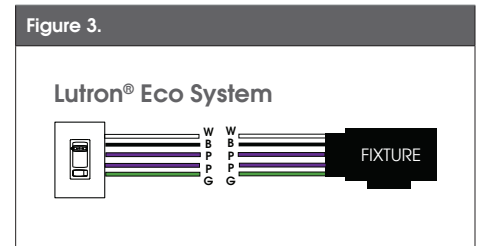
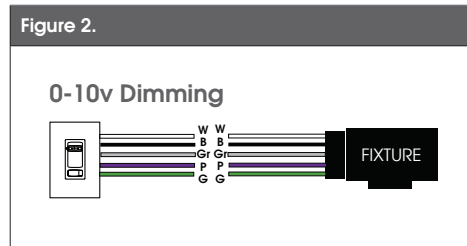
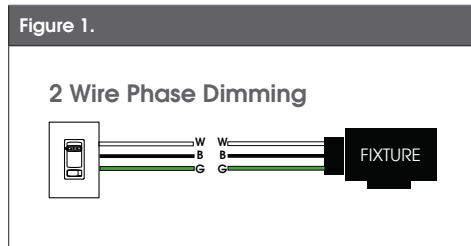




SOME OPTIONS NOT AVAILABLE ON ALL FIXTURES. CONSULT SPECIFICATION SHEETS.
SEE INDIVIDUAL SPECIFICATION SHEETS OR CONSULT FACTORY FOR ADDITIONAL INFORMATION.

DIMMING TYPE		SYSTEM	DIMS TO	WIRING
DS2W1	120v Phase Cut Dimming	ELV or MLV	1%	See Figure 1.
DS101	120v 0-10v Low Voltage Dimming	0-10v	10%	See Figure 2.
DLTE1	120v Lutron® 2-Wire Phase Cut Dimming	Lutron® Phase Cut	1%	See Figure 1.
DL3EX	120v Lutron® Ecosystem® Dimming	Lutron® Ecosystem®	1%	See Figure 3.
LDE1	120v Lutron® Ecosystem® Dimming, Fades to Black	Lutron® Ecosystem®	1%	See Figure 3.

Dimming systems not available on all fixtures, Consult individual specification sheets for availability

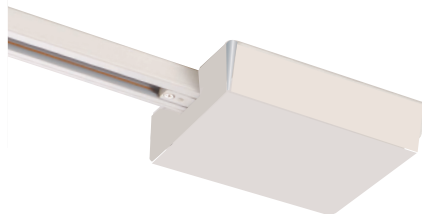
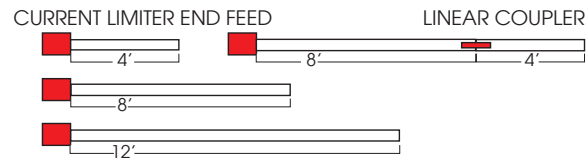


TRACK COMPONENT

CURRENT LIMITER (GES, TEK & HTEK TRACK)

MODEL NO.: GES Track - GES11CL
TEK Track - TEK11CL
HTEK Track - HTEK11CL

TYPICAL TRACK INSTALLATIONS



SPECIFY FINISH: Black (-2); White (-3)
SPECIFY AMPS

EXAMPLE: GES11CL-2-3A

TRACK HEAD PENDANT/EXTENDER

MODEL NO.: PEXT (LENGTH) (ADAPTOR)
To Convert Track Fixture to a
Pendant Mounted Track Fixture
Specify PEXT and Stem Length
and Adaptor Type.

EXAMPLE: PEXT18TEK100



GES66 TEK100 XTK100 GNC100

SPECIFY FINISH: Silver (-1) Black (-2) White (-3)



Adaptor must match track-use this chart to select adaptor.
adaptor will be wired to track head.

	1 CIRCUIT	2 CIRCUIT		3 CIRCUIT	3 CIRCUIT DIMMING
	1 NEUTRAL	2 NEUTRAL		1 NEUTRAL	1 NEUTRAL
SERIES NUMBER	GES	TEK	HTEK	XTS	GNC
Voltage	120	120	277	120	120
REQUIRED ADAPTOR	GES66	TEK100	HTEK100	GA100	GA100

DIMMING

	2 CIRCUIT			3 CIRCUIT	3 CIRCUIT DIMMING
	1 NEUTRAL	2 NEUTRAL		1 NEUTRAL	1 NEUTRAL
SERIES NUMBER	GES	TEK	HTEK	XTS	GNC
Voltage	120	120	277	120	120
TRACK LENGTHS	SPECIFY FINISH: Natural Aluminum (-1) Available for track lengths only; Black (-2); White (-3)				
4' Length	GES204	TEK44 / *FTP44	HTEK44 / *FTP44	XTS44 / *FTP44	GNC44
8' Length	GES208	TEK48 / *FTP48	HTEK48 / *FTP48	XTS48 / *FTP48	GNC48
12' Length	GES212	TEK412 / *FTP412	HTEK412 / *FTP412	XTS412 / *FTP412	GNC412
ACCESSORIES	SPECIFY FINISH: Black (-2); White (-3) *FTP (Recessed Track Jacket-Order Separately if Required)				
Live End	GES11	TEK11	HTEK11	XTS11	GNC11
Live End w/ Current Limiter (SPECIFY AMPS)	GES11CL	TEK11CL	HTEK11CL	N/A	N/A
End Cap	GES41	TEK41	HTEK41	XTS41	GNC41
Linear Coupler	GES21	TEK21	HTEK21	XTS21	GNC21
Conduit End Feed	GES13	N/A	N/A	N/A	N/A
Live Middle Feed	GES14	TEK14	HTEK14	XTS14	GNC14
Feedable L	GES34	TEK34	HTEK34	XTS34	GNC34
Feedable T	GES40	TEK40	HTEK40	XTS40	GNC40
Feedable X	GES38	TEK38	HTEK38	XTS38	GNC38
Floating Feed	GES67	N/A	N/A	N/A	N/A
Conduit Continuation	GES13 & GES16	N/A	N/A	N/A	N/A
Flex Connect	GES23	N/A	N/A	N/A	N/A
Monopoint***	GES70	N/A	N/A	N/A	N/A
TRACK MOUNTING	SPECIFY FINISH: Black (-2); White (-3)				
Stem Kit	GEA37 / ()	SPUS / ()	SPUS / ()	SPUS / ()	SPUS / ()
End Feed Suspension	GEA11	SP4E	SP4E	SP4E	SP4E
Universal Feed Suspension	GEA10	SP4P	SP4P	SP4P	SP4P
L Feed Suspension	N/A	SP4L	SP4L	SP4L	SP4L
T Feed Suspension	N/A	SP4T	SP4T	SP4T	SP4T
X Feed Suspension	N/A	SP4X	SP4X	SP4X	SP4X
TBAR Clip	GEA7	SKBT12	SKBT12	SKBT12	SKBT12
Cable Clip	N/A	SKB10	SKB10	SKB10	SKB10
Threaded Rod Mounting Clip	GEA6				
Ceiling Cup for Cable Rod*	N/A	SKB30	SKB30	SKB30	SKB30
Cable Lengths*	N/A	SKB34 (*)	SKB34 (*)	SKB34 (*)	SKB34 (*)
SPECIFY FINISH: Black (-2); White (-3) / (): SPECIFY STEM LENGTH / (*): SPECIFY CABLE LENGTH, 5' OR 9'					