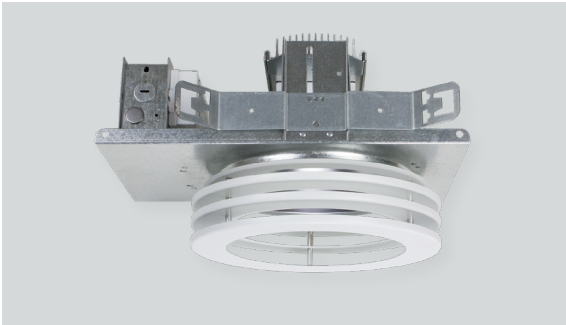




8" ROUND LED DOWNLIGHT OS SERIES / 4500 LUMENS MAX



SGE8LEDOS - DECORATIVE TRIM / NON-IC RATED

APPLICATION

8" LED Recessed open aperture downlight for general downlighting.

FEATURES

Two-stage optical system for smooth light distribution. Zhaga International Standard LED module for ease of maintenance and replacement. Shallow plenum design. Tool-less LED module, driver and J-Box access. Multi-Bar mounting brackets. BH27 Standard mounting bars included. Posi-lock trim retention torsion springs. Integral 0.625" collar.

TRIM FINISH

A variety of architectural powdercoat and anodized finishes are available. Matte white flange is standard.

ELECTRONICS

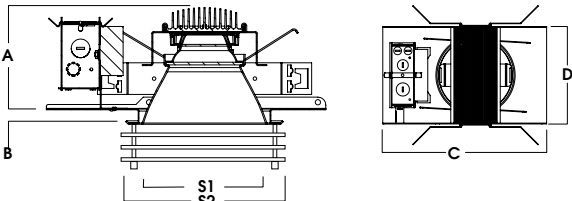
LED module features high brightness white Osram LEDs. 3-step MacAdam Ellipse binning and CRI 84 minimum. Full range of electronic 120V/277V and dimming drivers.

CONSTRUCTION

Housing/frame constructed of #20 ga. galvanized steel to resist corrosion. Self-flanged one piece trim spun from 0.063" thick high purity aluminum and finished to specification. Passive machined aluminum heatsink.

CODE COMPLIANCE

BAA Compliant. Non-IC rated. ETL certified to meet US and Canadian standards. Suitable for dry or damp locations. Optional Wet location. LM79/LM80/TM21 data available. Manufactured and tested to UL standards No. 1598/8750.



A	B	C	D	S1	S2
4.7 126.2 mm	0.625 15.87 mm	14.0 355.6 mm	9.38 236.2 mm	7.5 190.5 mm	9.2 233.7 mm

WATTAGE TO LUMENS UPDATE			
CURRENT PART NUMBER EXAMPLE	PREVIOUS PART NUMBER EXAMPLE	SOURCE LUMENS ¹	SYSTEM WATTS
SGE8LEDOS10L	SGE8LEDOS14W	1100	11
SGE8LEDOS20L	SGE8LEDOS25W	2000	20
SGE8LEDOS30L	SGE8LEDOS35W	3000	28
SGE8LEDOS45L	N/A	4500	41

SERIES	LUMENS ¹	CCT	DRIVER / VOLTAGE ²	OPTIONS ⁴	TRIM	FINISH	TRIM OPTIONS	
SGE8LEDOS	10L	1100 Lm	27K 2700K	E Electronic Driver DS10 10%, 0-10V DS2W1 1%, ELV/MLV, 120V DO10 1%, 0-10V DLTE1 1% Lutron® 2-Wire Forward Phase, 120V DL3E 1% Lutron® EcoSystem®, Fade EL10 1%, eldoLED ED01 0.1%, eldoLED DALI DALI Control DMXS³ DMX Standard Configuration DMXC³ DMX Non-Standard Custom	BH27⁵ 27" Solid Bars H12 12" - 24" Expandable Bars H06 6" - 12" Expandable Bars CB24 24" C-Channel Bars FS Fusing EB Fixture Painted Black CR Corrosion Resistant PR⁶ Deep Ceiling Extension GR Goof Ring ZIG⁷ ZigBee Module BLU⁷ Bluetooth LE EM⁸ 7W Emergency Battery Test Switch Remote AMB Anti-Microbial Finish	AR8223OS	MW⁹ Matte White MB Matte Black SG Semi-Diffuse HZ Haze Full Diffuse PT Platinum Silver BZ Bronze OB Oil Rubbed Bronze CH Charcoal AS Anodic Sapphire AN Anodic Natural AC Anodic Champagne AZ Anodic Bronze AK Anodic Black AM Anodic Malachite SN Sun Gold CO Copper Metallic GH Graphite CC¹⁰ Custom Color	SO¹¹ Micro Prism Solite™ Lens FG Frosted Glass Lens GS Gasket WL Wet Location PF¹² Polished Flange AMB Anti-Microbial Finish DECORATIVE TRIM 3TMR 3 Tier Spun Aluminum Rings (Specify Finish)
	20L	2000 Lm	30K 3000K					
	30L	3000 Lm	35K 3500K					
	45L	4500 Lm	40K 4000K					

EXAMPLE: SGE8LEDOS30L35KE1/AR8223OSMW3TMR

NOTES:
 1 Nominal Source Lumens at 35K 2 Contact Factory for Additional Options 3 Contact Factory 4 See Product Options Page for Details 5 Standard Bar Hangers 6 Contact Factory 7 Order DS101/2 When Specifying ZIG or BLU
 8 Standard EM 9 Standard Finish 10 Contact Factory for Special Finishes 11 Standard Lens 12 Flange and Reflector Same Finish



PROJECT: _____
 TYPE: _____



Dimensions and values shown are nominal. Spectrum Lighting continually works to improve products and reserves the right to make changes which may alter the performance or appearance of products.