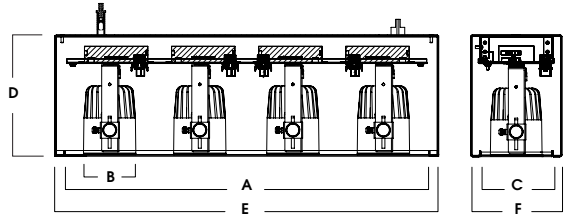
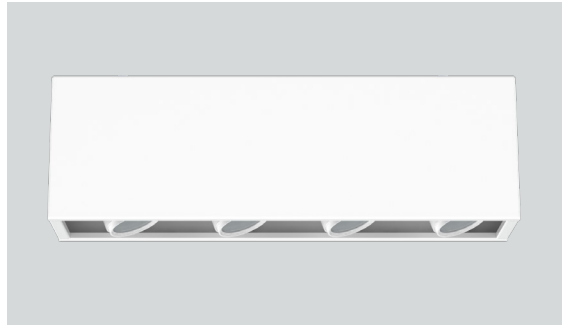


INDIVIDUAL MODULES ROTATE 359° / TILT 20° WITH 1" PULL-DOWN

SEAM WELDED ALUMINUM FIXTURE



RCC624LEDXT Shown - Modules Spaced 6" O.C.

#OF MODULES	APERTURE			H	L	W
	A	B	C			
1	6.0	3.0	4.7	8.0	7.3	6.0
2	12.0	3.0	4.7	8.0	13.3	6.0
3	18.0	3.0	4.7	8.0	19.3	6.0
4	24.0	3.0	4.7	8.0	25.3	6.0

6" MODULAR ACCENT LIGHT SUSPENDED / SURFACE

XT LED SERIES / MULTI-MODULE / 4 x 2000 LUMENS



RCC6-LEDXT

APPLICATION

RCC 6" series modular fixture for suspended/surface accent lighting.

FEATURES

Surface mounted modular accent fixture. Fixture available with 1-4 modules and choice of 4 beam distributions. Fixture modules rotate 359°, lock and tilt to 20° with 1" pull-down for optimal aiming. Front loading lamp bezel accepts up to two lens/louver options.

TRIM FINISH

A variety of architectural powdercoat finishes for interior of fixture and trim are available.

ELECTRONICS

LED system features Xicato LED module with proprietary phosphor technology that provides consistent stable color with CCT control of +/- 100K over life of the light engine. Base CRI is 83 with 2-step MacAdam Ellipse binning. High CRI is 98 with 1 x 2-step MacAdam Ellipse binning. Variety of electronic 120V/277V and dimming drivers.

CONSTRUCTION

Housing formed of #18 gauge 5052-H32 aluminum, seam welded and finished to specification. Fixture modules die-cast and machined aluminum.

CODE COMPLIANCE

BAA Compliant. Non-IC rated. ETL certified to meet US and Canadian standards. Suitable for dry or damp locations. Manufactured and tested to UL standards No. 1598/8750.

LUMENS / WATTAGE DATA PER MODULE				
PART NUMBER	SOURCE LUMENS ¹	DELIVERED LUMENS ²	SYSTEM WATTS ³	LPW
RCC66LEDXT10L	1000	765	9.1	84
RCC66LEDXT13L	1300	1031	13.0	79
RCC66LEDXT20L	2000	1586	21.7	73

Note: 98 CRI (Artist) operates at higher wattage than 83 CRI. In order to have equivalent source lumens, comparatively, as listed below.

SERIES	LUMENS ¹	CCT	BEAM	DRIVER / VOLTAGE ⁵	OPTIONS ⁶	INTERIOR	MOUNTING ⁸	FINISHES ¹⁰	
RCC66 1 Module	LEDXT10L	1000 Lm	83 CRI	XN ⁴ 10°	EX	Electronic Driver, 120V/277V	LENS MWI White MBI Black PTI Platinum BZI Bronze CCI Custom Color	HMx2 ⁹ 2-Hang-Straight Pendants (3/8 IPS) PMx2 ⁹ Rigid Pendant (3/8 IPS) CDx4 ⁹ 4-Aircraft Cable, Straight Cord SM Surface Mount SC1 Safety Cable	
	LEDXT13L	1300 Lm	27K 2700K	ND 26°	DS10X	10% 0-10V, 120V/277V			MB ¹¹ Matte Black PT ¹¹ Platinum Silver
	LEDXT20L	2000 Lm	30K 3000K	MD 48°	DO10X	1% 0-10V, 120V/277V			BZ Bronze CH Charcoal
RCC612 2 Modules			35K 3500K	WD 60°	DS2W1	1%, ELV/MLV, 120V		MT Textured Silver	
RCC618 3 Modules			40K 4000K		DLTE1	1%, Lutron® 2-Wire Forward Phase, 120V		TW Textured White TB Textured Black	
RCC624 4 Modules			98 CRI ARTIST		DL3EX	1%, Lutron® EcoSystem®, 120V/277V		MT Textured Silver	
			27HK 2700K		EL10X	1%, eldoLED, 120V/277V		GH Graphite SN Sun Gold	
			30HK 3000K		ED01X	0.1%, eldoLED, 120V/277V		AC Champagne AN Anodic Natural	
			35HK 3500K		DALIX	DALI Control, 120V/277V		CN Caramel CC Custom Color	
			40HK 4000K						

EXAMPLE: RCC66LEDXT10L35KMD E1/SO/MWI/SM/CH

NOTES:
 1 Nominal Source Lumens at Any CCT - Per Module 2 Nominal Delivered Lumens 83 CRI at Any CCT with ND, No Lens - Per Module 3 One Module 83 CRI, No Thermal Protector 4 9mm, 13L Max. All XN Draw More Watts Than Other Optics; See Photometry 5 Contact Factory for Additional Options 6 See Product Options Page for Details 7 See Lens Options Page for Details 8 Suspension Points With Power 9 Specify Length in Inches; See Mounting Page for Available Lengths 10 See Color Page for More Options/Consult Factory for Special Finishes 11 Standard Finishes



PROJECT: _____
 TYPE: _____



Dimensions and values shown are nominal. Spectrum Lighting continually works to improve products and reserves the right to make changes which may alter the performance or appearance of products.



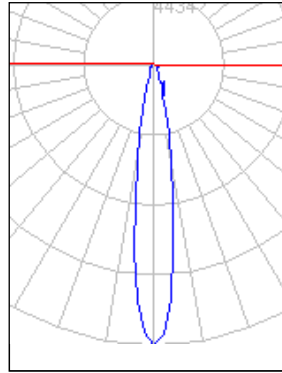
MULTIPLES OPTIONS PAGE

RCC6-LEDXT

DISTANCE FROM CEILING		DIAMETER OF CIRCLE
5.5	586	2.0
7.5	315	2.0
9.5	197	3.0
11.5	134	3.0
13.5	97	4.0

Total Lamp Lumens	6500
Total Luminaire Efficiency	46 %
Spacing Criteria (0-180)	.28

CANDELA	0	180
0	17737.7	17737.7
10	6297.0	6275.4
20	1117.5	1127.7
30	469.9	452.3
40	323.3	340.9
50	319.6	314.0
60	251.8	229.0
70	40.7	33.2
80	5.4	3.7
90	.9	0



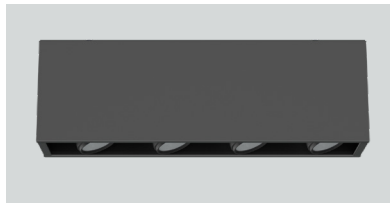
Coefficients Of Utilization - Zonal Cavity
Effective Floor Cavity Reflectance 0.20

COLOR OPTIONS

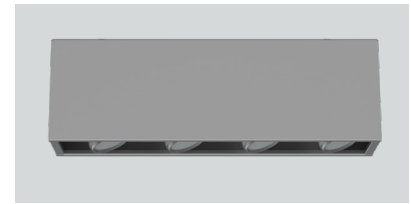
MW - Matte White



MB - Matte Black



PT - Platinum Silver



OPTIONS

FS - FUSING

Slow Blow Type Fuse Protects
Fixture Against Voltage Surges.
Factory installed.



EMERGENCY BATTERY

EMRM5W - 5W Remote Emergency
Battery, 120v/277

EMRM7W - 7W Remote Emergency
Battery, 120v/277

EMRM12W - 12W Remote Emergency
Battery, 120v/277



LED SERIES	LED EMITTER SOURCE LUMENS	EMLED5W SOURCE LUMENS (90 MIN)	EMLED7W SOURCE LUMENS (90 MIN)	EMLED12W SOURCE LUMENS (90 MIN)
LEDXT	1000-5000 Lm	500 Lm	800 Lm	1200 Lm