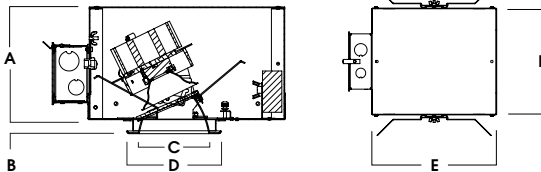
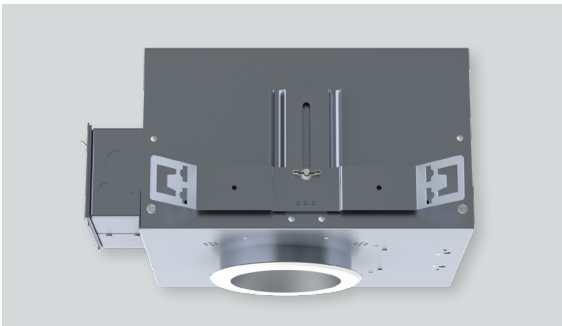
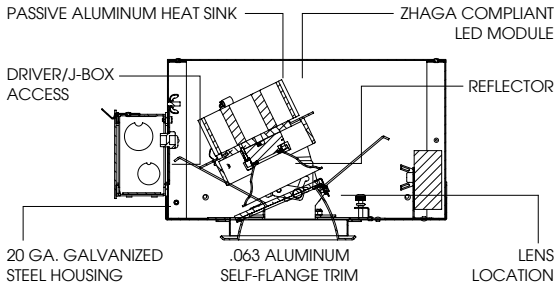




# 4" ROUND IC WALL WASH XT SERIES / 2000 LUMENS MAX



A	B	C	D	E	F
6.4	.625	4.0	5.8	10L-13L: 13.2	9.5
162.6 mm	15.2 mm	101.6 mm	147.3 mm	20L: 19.2	241.3 mm

## RWFI4XT - TRIM FLANGE / IC RATED

### APPLICATION

Versatile 4" Round aperture recessed LED wall wash for Insulated Ceiling installations with a wide range of lumens and control options.

### FEATURES

Two-stage optical system for smooth light distribution and focus control. Quick change LED module with interchangeable optics for job site adjustment and fixture maintenance. Shallow plenum design. Tool-less driver and j-box access. Posi-lock trim retention torsion springs. See RWZI4 series for trimless plaster or wood ceiling.

### TRIM FINISH

A variety of architectural powdercoat and anodized finishes are available.

Matte white flange is standard.

### ELECTRONICS

LED system features Xicato LED module with proprietary phosphor technology that provides consistent, stable color with CCT control of +/- 100K over life of the light engine. Base CRI is 83 with 2-step MacAdam Ellipse binning. High CRI is 98 with 1x2-step MacAdam Ellipse binning. Variety of electronic 120V/277V and dimming drivers.

### CONSTRUCTION

Housing/frame constructed of #20 ga. galvanized steel to resist corrosion. Self-Flanged one piece trim spun from 0.063" thick high purity aluminum and finished to specification.

### CODE COMPLIANCE

BAA Compliant. IC rated. UL certified to meet US and Canadian standards. Suitable for dry or damp locations. Optional Wet location. Manufactured and tested to UL standards No. 1598/8750.

WATTAGE TO LUMENS UPDATE					
CURRENT PART NUMBER EXAMPLE	PREVIOUS PART NUMBER EXAMPLE	SOURCE LUMENS <sup>1</sup>	DELIVERED LUMENS <sup>2</sup>	SYSTEM WATTS	LPW
RWFI4XT10L	RWFI4LEDX115W	1000	552	11.1	49.7
RWFI4XT13L	RWFI4LEDX120W	1300	744	15.0	49.6
RWFI4XT20L	RWFI4LEDX120W	2000	1145	23.7	48.3

SERIES	LUMENS <sup>1</sup>	CCT	OPTICS	DRIVER / DIMMING / VOLTAGE <sup>3</sup>	OPTIONS <sup>4</sup>	TRIM	FINISH	TRIM OPTIONS <sup>10</sup>			
RWFI4XT	83 CRI		WD Wide XW Extra Wide	E Electronic Driver DS10_ 10% 0-10V DO10_ 1% 0-10V DS2W1 1%, ELV/MLV, 120V DLTE1 1% Lutron® 2-Wire Forward Phase, 120V DL3E 1% Lutron® EcoSystem®, Fade EL10_ 1%, eldoLED ED01_ 0.1%, eldoLED DALI_ DALI Control	1 120V 2 277V	RW4FXT <sup>7</sup>	SG <sup>8</sup> Semi-Diffuse HZ Haze Full Diffuse MW Matte White MB Matte Black PT Platinum Silver OB Oil Rubbed Bronze CH Charcoal AC Anodic Champagne AS Anodic Sapphire AM Anodic Malachite SN Sun Gold CO Copper Metallic GH Graphite AMB Anti Microbial Finish CC <sup>9</sup> Custom Color	SKX <sup>11</sup> Linear Wall Wash Lens SKW Linear Wall Wash Lens Wet Location PF <sup>12</sup> Polished Flange			
	10L	1000 Lm							27K	2700K	BH27 <sup>5</sup> 27" Solid Bars H12 12" - 24" Expandable Bars
	13L	1300 Lm							30K	3000K	H06 6" - 12" Expandable Bars CB24 24" C-Channel Bars
	20L	2000 Lm							35K	3500K	EMRM Remote Emergency Battery Pack
									40K	4000K	FS Fusing EB Black Housing
											CR Corrosion Resistant PR <sup>6</sup> Deep Ceiling Extension GR Goof Ring CCEA Chicago Ceiling Plenum Rated AMB Anti Microbial Finish
	98 CRI										
	10L	1000 Lm	27HK	2700K							
	13L	1300 Lm	30HK	3000K							
	20L	2000 Lm	35HK	3500K							
			40HK	4000K							

**EXAMPLE:** RWFI4XT13L35KXWE1H12/RW4FXTSGSKX

**NOTES:**

1 Nominal Source Lumens at Any CCT 2 Nominal Delivered Lumens 83 CRI at Any CCT with XW-SG-SKX 3 Contact Factory for Additional Options 4 See Product Options Page for Details 5 Standard Bar Hangers 6 Contact Factory 7 "F" Indicates Self-Flange Trim, Matte White Standard 8 Standard Finish 9 Contact Factory for Special Finishes 10 Contact Factory for Special Lenses/Louvers 11 Standard Lens 12 Flange and Reflector Same Finish



PROJECT: \_\_\_\_\_  
TYPE: \_\_\_\_\_



Dimensions and values shown are nominal. Spectrum Lighting continually works to improve products and reserves the right to make changes which may alter the performance or appearance of products.