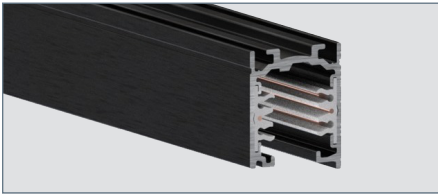




OT/HOT ARCHITECTURAL TRACK & ACCESSORIES

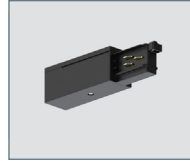
SURFACE/SUSPENDED - 120V or 277V - 2 CIRCUIT / 2 NEUTRAL 0-10V CONTROL



OT/HOT TRACK

One Track surface or suspended track system for 0-10V or DALI controllability. Specify 120V or 277V systems.

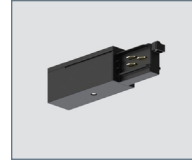
- OTS2W4** - 4' Track, 120V, White
- HOTS2W4** - 4' Track, 277V, White
- OTS2W8** - 8' Track, 120V, White
- HOTS2W8** - 8' Track, 277V, White
- OTS2B4** - 4' Track, 120V, Black
- HOTS2B4** - 4' Track, 277V, Black
- OTS2B8** - 8' Track, 120V, Black
- HOTS2B8** - 8' Track, 277V, Black



END-FEED

Polarity Right / Ground Left

- OTO1W2** - 120V, White
- HOTO1W2** - 277V, White
- OTO1B2** - 120V, Black
- HOTO1B2** - 277V, Black



END-FEED

Polarity Left / Ground Right

- OTO2W2** - 120V, White
- HOTO2W2** - 277V, White
- OTO2B2** - 120V, Black
- HOTO2B2** - 277V, Black



MIDDLE FEED

Polarity Ridge

- OT10W2** - 120V, White
- HOT10W2** - 277V, White
- OT10B2** - 120V, Black
- HOT10B2** - 277V, Black



"L" FEED

Polarity Interior / Ground Exterior

- OT11W2** - 120V, White
- HOT11W2** - 277V, White
- OT11B2** - 120V, Black
- HOT11B2** - 277V, Black



"L" FEED

Polarity Exterior / Ground Interior

- OT12W2** - 120V, White
- HOT12W2** - 277V, White
- OT12B2** - 120V, Black
- HOT12B2** - 277V, Black



"T" FEED

Polarity Exterior Left / Ground Interior Right

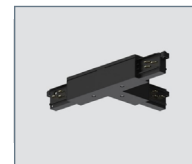
- OT13W2** - 120V, White
- HOT13W2** - 277V, White
- OT13B2** - 120V, Black
- HOT13B2** - 277V, Black



"T" FEED

Right / Ground Interior Left

- OT14W2** - 120V, White
- HOT14W2** - 277V, White
- OT14B2** - 120V, Black
- HOT14B2** - 277V, Black



"T" FEED

Polarity Interior Left / Ground Exterior Right

- OT15W2** - 120V, White
- HOT15W2** - 277V, White
- OT15B2** - 120V, Black
- HOT15B2** - 277V, Black



"T" FEED

Polarity Interior Right / Ground Exterior Left

- OT16W2** - 120V, White
- HOT16W2** - 277V, White
- OT16B2** - 120V, Black
- HOT16B2** - 277V, Black



"X" FEED

Not to be used with trimless track

- OT17W2** - 120V, White
- HOT17W2** - 277V, White
- OT17B2** - 120V, Black
- HOT17B2** - 277V, Black



JOINTING CONNECTOR

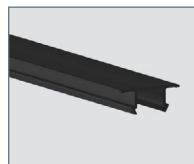
Polarity Ridge

- OTO3W** - 120V/277V, White
- OTO3B** - 120V/277V, Black



END CAP FOR TRACK WITH LOCKING SCREW

- OTO4W** - 120V/277V, White
- OTO4B** - 120V/277V, Black



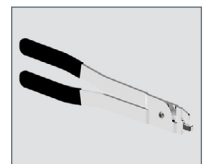
ADDITIONAL COVER STRIP FOR TRACK

- OTGPW4** - 4', 120V/277V, White
- OTGPB4** - 4', 120V/277V, Black
- OTGPW8** - 8', 120V/277V, White
- OTGPB8** - 8', 120V/277V, Black



SWAG HOOK

- OTHW** - 120V or 277V, White
- OTHB** - 120V or 277V, Black

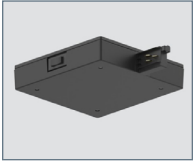


CUTTING TOOL FOR TRACK CONDUCTORS

- OTT** - Cutting Tool For Track Conductors

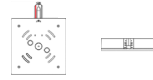
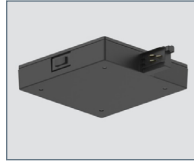


CURRENT LIMITING DEVICES



CURRENT LIMITER

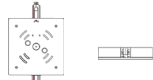
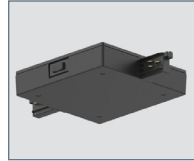
- OT01CLW2** - 120V, White
- HOT01CLW2** - 277V, White
- OT01CLB2** - 120V, Black
- HOT01CLB2** - 277V, Black



CURRENT LIMITER

Polarity Ridge

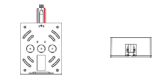
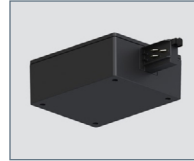
- OT02CLW2** - 120V, White
- HOT02CLW2** - 277V, White
- OT02CLB2** - 120V, Black
- HOT02CLB2** - 277V, Black



CURRENT LIMITER

Polarity Ridge

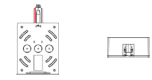
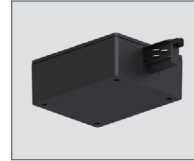
- OT10CLW2** - 120V, White
- HOT10CLW2** - 277V, White
- OT10CLB2** - 120V, Black
- HOT10CLB2** - 277V, Black



SHORT CURRENT LIMITER

Polarity Interior / Floor View

- OT01CLSW2** - 120V, White
- HOT01CLSW2** - 277V, White
- OT01CLSB2** - 120V, Black
- HOT01CLSB2** - 277V, Black



SHORT CURRENT LIMITER

Polarity Exterior / Floor View

- OT02CLSW2** - 120V, White
- HOT02CLSW2** - 277V, White
- OT02CLSB2** - 120V, Black
- HOT02CLSB2** - 277V, Black



END CAP FOR CURRENT LIMITING DEVICES

- OT04CLW** - 120V/277V, White
- OT04CLB** - 120V/277V, Black

AMPERAGE

Consult Factory for Other Wattages

- 1A** - 120W
- 2A** - 210W
- 5A** - 500W

HOW TO ORDER CURRENT LIMITING DEVICES

CLD		AMP
	-	
<small>EXAMPLE</small>		
OT02CLW2	-	1A