



3" ROUND DEEP DOWNLIGHT N-LINE 3000 LUMENS MAX

UNIVERSAL HOUSINGS WITH INTERCHANGEABLE TRIMS

Spectrum's A Spec 3" recessed round downlight series features a deep plenum housing and trim for general illumination.

LUMENS AND WATTAGE CHART					
PART NUMBER	LUMENS	SOURCE LUMENS ¹	DELIVERED LUMENS ²	SYSTEM WATTS	LPW
RDD3N	XT10L	1000	954	11.1	86
RDD3N	XT13L	1300	1285	15	86
RDD3N	XT20L	2000	1977	23.7	83
RDD3N	XT30L	3000	2965	34.6	86

PROJECT: _____

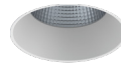
TYPE: _____



Lensed

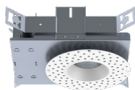


Open

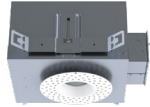


AVAILABLE HOUSING TYPES

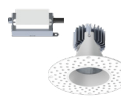
SR3DNMO - New Construction / 30L Max



SR3DNMI - IC New Construction / 20L Max



SR3DNMR - Remodel Construction / 30L Max



Shown with N-Line Plaster Fitter

FIXTURE HOUSING SPECIFICATION

SERIES	LUMENS ¹	DRIVER / DIMMING / VOLTAGE	OPTIONS
SR3DNMO New Construction	XT10L 1000 Lm	E Electronic Driver	H12 12" - 24" Expandable Bars
SR3DNMI IC New Construction	XT13L 1300 Lm	DS10 10%, 0-10V	H06 6" - 12" Expandable Bars
SR3DNMR Remodel Construction	XT20L 2000 Lm	DO10 1%, 0-10V	BH27 27" Solid Bars
	XT30L ^{4/5} 3000 Lm	DS2W1 1%, ELV/MLV, 120V	CB24 24" C-Channel Bars
	XN BEAM	DLTE1 1% Lutron® 2-Wire Forward Phase, 120V	CH24 24" Chicago Bars
	XN10L 1000 Lm	DL3E 1% Lutron® EcoSystem® Fade	FS Fusing
	XN13L 1300 Lm	EL10 1%, eldoLED	EM Integral Emergency Battery
		ED01 0.1%, eldoLED	EMRM Remote Emergency Battery Pack
		DMXS ^{6/7} DMX Standard Configuration	EB Black Housing
		DMXC ^{6/7} DMX Non-Standard Custom	PR2 2" Thick Ceiling Adaptor
		BLU Bluetooth LE	

- Die-cast aluminum trim with a wide variety of options.
- Deep regressed trim.
- Universal housing accepts all trim types, including F-Line self-flange.
- Performance Xicato LED module for superior reliability and color consistency.
- Large selection of dimming and control options.
- Interchangeable optics and lenses.
- 5 year warranty on fixture and electronics.
- 10 year warranty on LED CCT.
- Bluetooth LE option.
- Sustainable fixture.
- Zhaga International Standard LED Module for future upgrades.
- 83CRI 2SDCM, 98CRI 1SDCM best in industry.

AVAILABLE TRIM / MODULE TYPES



TRIM / MODULE SPECIFICATION

TRIM	CCT	OPTICS	FINISH	OPTIONS
RDD3N Downlight	83 CRI	XN ⁸ 12° ND 25° MD 43° WD 53°	MW ⁹ Matte White MB Matte Black PT Platinum Silver BZ Bronze CH Charcoal OB Oil Rubbed Bronze AS Sapphire AM Malachite SN Sun Gold CO Copper Metallic GH Graphite CC ¹⁰ Custom Color	NL No Lens SO Micro Prism Solite™ Lens GL Clear Glass Lens FG Frosted Glass Lens PR2 ² 2" Thick Ceiling Adaptor WL Wet Location
	27K 2700K			
	30K 3000K			
	35K 3500K			
	40K 4000K			
	98 CRI ARTIST ⁴			
	27HK 2700K			
	30HK 3000K			
	35HK 3500K			
	40HK 4000K			

EXAMPLE: SR3DNMOXT10LDS2W1/H12/RDD3N27KMDMWNL

NOTES:

1 Nominal Source Lumens at Any CCT 2 Nominal Delivered Lumens 83 CRI at Any CCT with MD-MW-GL Trim 3 20L Max 4 For 20L HK and 30L Options Install Fixtures in Accordance with the Following Marked Spacing: (a) Center to Center of Adjacent Luminaires: 600mm (24in); (b) Top of Luminaire to overhead Building Member: 39mm (1.5in); (c) Luminaire Center to side Building Member: 300mm (12in) 5 Not Available with HK 6 Contact Factory 7 Not Available in IC 8 9mm, 13L Max. All XN Draw More Watts Than Other Optics: See Photometry 9 Standard Finish 10 Contact Factory for Special Finishes



LIGHTSOURCE BY
XICATO



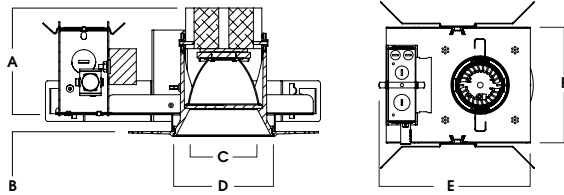
Dimensions and values shown are nominal. Spectrum Lighting continually works to improve products and reserves the right to make changes which may alter the performance or appearance of products.



HOUSING DIMENSIONS

SR3DNMO - NEW CONSTRUCTION / 30L MAX

Non-IC rated, thermally protected frame-in kit for new construction. Non-IC designation requires insulation must be minimum of 3" from housing.



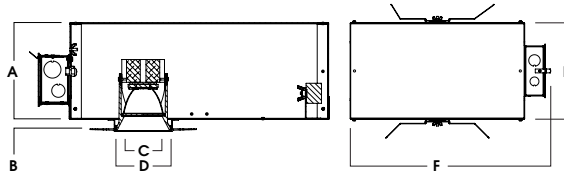
LED	A	B	C	D	E	F
XT10L	4.0	.625	3.37	4.5	9.57	7.65
XT13L	4.0	.625	3.37	4.5	9.57	7.65
XT20L	4.5	.625	3.37	4.5	9.57	7.65
XT30L	4.8	.625	3.37	4.5	9.57	7.65

Fixture Weight: 4.0 lbs

Ceiling Cutout: Ø 4"

SR3DNMI - IC NEW CONSTRUCTION / 20L MAX

IC rated frame-in kit for new construction with direct insulation contact and CCEA (Chicago Plenum) compatibility.



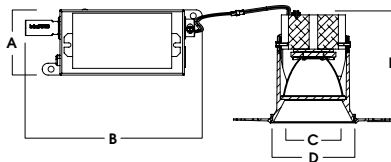
A	B	C	D	E	F
6.36	.625	3.37	4.5	9.5	10L-13L: 13.2
161.5 mm	15.9 mm	85.6 mm	114.3 mm	241.3 mm	20L: 19.2

Fixture Weight: 5.0 lbs

Ceiling Cutout: Ø 4"

SR3DNMR - REMODEL CONSTRUCTION / 30L MAX

Non-IC rated frame-in kit for existing construction. Non-IC designation requires insulation must be minimum of 3" from housing.



A	B	C	D	E
2.8	7.5	3.37	4.5	10L: 4.7
2.8	7.5	3.37	4.5	13L: 4.7
2.8	7.5	3.37	4.5	20L: 5.2
2.8	7.5	3.37	4.5	30L: 5.5

Fixture Weight: 2.0 lbs

Ceiling Cutout: Ø 3 3/4"

FEATURES

FRAME-IN KIT

Precision Die-formed 20 gauge galvanized steel housing and integral junction box with (3) 5/8", (3) 7/8" and (2) 1 1/8" knockouts. Junction box capacity: 8 12AWG rated for 90 °C. Tool-less driver and junction box access for ease of maintenance. Post-loc trim retention springs for 5/8"-1" ceiling thickness. Use PR2 for up to 2" thick ceiling. For thicker ceilings consult factory.

MOUNTING

A variety of mounting bars are available (excluding remodel). Ceiling materials must be rigid to support luminaire frame.

DRIVER

Several constant current dimming drivers are available. Power factor >.9 typical, 50/60Hz, 350-1050mA.

TRIM

Flangeless, one-piece, die-cast aluminum finished in a variety of powdercoat options. Trim option for trimless plaster (Z), wood (W) or stone (S) ceiling options. For self-flange options see F-Line.

REMODEL

Features tethered power supply and junction box with sheathed wire.

LUMEN OUTPUT

XN narrow optic restricted to 1300 lumens max. All other optics and kelvins maintain 1000-3000 lumens range.

LED

Zhaga compatible high performance Xicato module. Proprietary phosphor technology provides consistent and stable color with CCT control of +/- 100K over life of light engine.

EMERGENCY

Integral or remote 7W emergency battery options are available. Operates for 90 minutes and produces nominal 450 lumens.

DMX

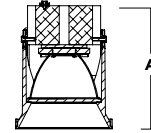
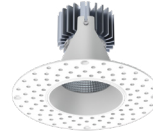
See [DMX Connections and Settings Guide](#) for default configurations. Contact quotes@speclight.com or your local representative for custom solutions.

BLUETOOTH

Integral Bluetooth LE option is available for dimming to .1%, grouping, remote access, electrical feedback and beacon technology.

TRIM / MODULE DATA

RDD3N - DOWNLIGHT MODULE

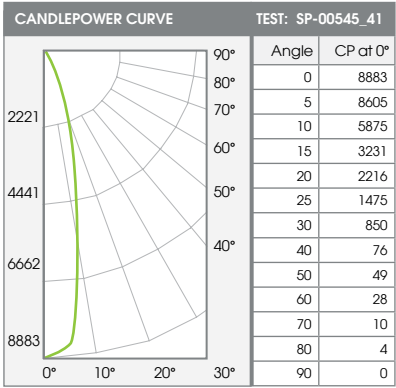


Lm	A
XT10L	4.7
XT13L	4.7
XT20L	5.2
XT30L	5.5



PHOTOMETRIC DATA - 3" ROUND DEEP

SR3DNMx-XT30L-E1-RDD3x-xxK-ND-MW-GL



ZONAL LUMENS		
0-10	733	27%
0-20	1725	64%
0-30	2402	89%
0-40	2607	96%
0-60	2685	99%
0-80	2710	100%
0-90	2713	100%
Total Lumens	2713	100%

30L NARROW - 83 CRI

SINGLE UNIT: PERFORMANCE INITIAL FOOTCANDLES AND BEAM ANGLE DIAMETERS			
Mounting Height*	FC at Center	Diameter of Beam**	FC at Beam**
5.5'	294	2.5'	140
6.5'	210	2.9'	100
7.5'	158	3.4'	75
8.5'	123	3.8'	59
10'	89	4.5'	42
12'	62	5.4'	29
14'	45	6.3'	22
16'	35	7.2'	17

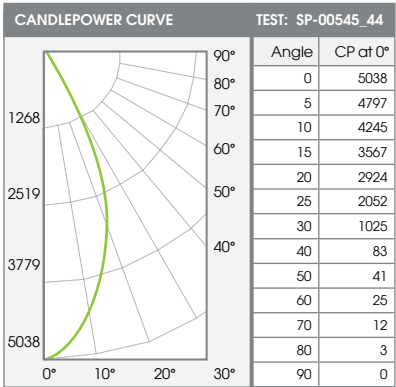
MULTIPLE UNITS: PERFORMANCE 80/50/20% REFLECTANCES INITIAL FOOTCANDLES AND WATTS PER SQUARE FOOT					
Ceiling Height	Fixture Spacing	RCR 8		RCR 10	
		FC*	W/Sq. Ft.	FC*	W/Sq. Ft.
8'	2.5'	87	1.38	63	1.08
12'	4'	58	0.92	56	0.96
16'	5'	49	0.78	48	0.81
Delivered Illuminance Rating: (DIR)		63 FC per W/Sq. Ft.		58 FC per W/Sq. Ft.	

Square Rooms used for Multiple Units:
 - RCR 8: Length & Width = Ceiling Ht. x 1.25
 - RCR 10: Length & Width = Ceiling Ht. x 1.0
 * Average Footcandles at floor

Delivered Lumens: 2713 CP @ 0° (Nadir): 8883 Beam Angle: 25.4°
 Luminaire Watts: 34.6 CRI: 83 Spacing Ratio: 0.44

FC Multipliers: 10L x 0.322, 13L x 0.433, 20L x 0.667
 W/Sq. Ft. Multipliers: 10L x 0.320, 13L x 0.433, 20L x 0.685

SR3DNMx-XT30L-E1-RDD3x-xxK-MD-MW-GL



ZONAL LUMENS		
0-10	452	15%
0-20	1501	51%
0-30	2524	85%
0-40	2848	96%
0-60	2932	99%
0-80	2963	100%
0-90	2965	100%
Total Lumens	2965	100%

30L MEDIUM - 83 CRI

SINGLE UNIT: PERFORMANCE INITIAL FOOTCANDLES AND BEAM ANGLE DIAMETERS			
Mounting Height*	FC at Center	Diameter of Beam**	FC at Beam**
5.5'	167	4.5'	71
6.5'	119	5.3'	51
7.5'	90	6.2'	38
8.5'	70	7.0'	30
10'	50	8.2'	22
12'	35	9.8'	15
14'	26	11.5'	11
16'	20	13.1'	8

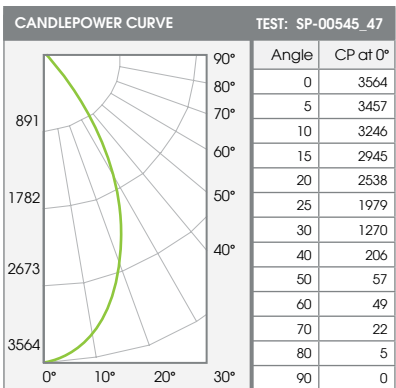
MULTIPLE UNITS: PERFORMANCE 80/50/20% REFLECTANCES INITIAL FOOTCANDLES AND WATTS PER SQUARE FOOT					
Ceiling Height	Fixture Spacing	RCR 4		RCR 6	
		FC*	W/Sq. Ft.	FC*	W/Sq. Ft.
8'	5'	62	0.78	56	0.79
12'	8'	49	0.62	56	0.78
16'	10'	27	0.35	32	0.44
Delivered Illuminance Rating: (DIR)		78 FC per W/Sq. Ft.		72 FC per W/Sq. Ft.	

Square Rooms used for Multiple Units:
 - RCR 4: Length & Width = Ceiling Ht. x 2.5
 - RCR 6: Length & Width = Ceiling Ht. x 1.66
 * Average Footcandles at floor

Delivered Lumens: 2965 CP @ 0° (Nadir): 5038 Beam Angle: 44.6°
 Luminaire Watts: 34.6 CRI: 83 Spacing Ratio: 0.72

FC Multipliers: 10L x 0.322, 13L x 0.433, 20L x 0.667
 W/Sq. Ft. Multipliers: 10L x 0.320, 13L x 0.433, 20L x 0.685

SR3DNMx-XT30L-E1-RDD3x-xxK-WD-MW-GL



ZONAL LUMENS		
0-10	318	12%
0-20	1120	41%
0-30	2008	73%
0-40	2550	93%
0-60	2719	99%
0-80	2755	100%
0-90	2757	100%
Total Lumens	2757	100%

30L WIDE - 83 CRI

SINGLE UNIT: PERFORMANCE INITIAL FOOTCANDLES AND BEAM ANGLE DIAMETERS			
Mounting Height*	FC at Center	Diameter of Beam**	FC at Beam**
5.5'	118	5.5'	47
6.5'	84	6.5'	34
7.5'	63	7.4'	25
8.5'	49	8.4'	20
10'	36	9.9'	14
12'	25	11.9'	10
14'	18	13.9'	7
16'	14	15.9'	6

MULTIPLE UNITS: PERFORMANCE 80/50/20% REFLECTANCES INITIAL FOOTCANDLES AND WATTS PER SQUARE FOOT					
Ceiling Height	Fixture Spacing	RCR 2		RCR 4	
		FC*	W/Sq. Ft.	FC*	W/Sq. Ft.
8'	6'	66	0.78	58	0.78
12'	9'	29	0.35	26	0.35
16'	12'	16	0.20	14	0.20
Delivered Illuminance Rating: (DIR)		82 FC per W/Sq. Ft.		73 FC per W/Sq. Ft.	

Square Rooms used for Multiple Units:
 - RCR 2: Length & Width = Ceiling Ht. x 5.0
 - RCR 4: Length & Width = Ceiling Ht. x 2.5
 * Average Footcandles at floor

Delivered Lumens: 2846 CP @ 0° (Nadir): 3564 Beam Angle: 52.8°
 Luminaire Watts: 34.6 CRI: 83 Spacing Ratio: 0.84

FC Multipliers: 10L x 0.322, 13L x 0.433, 20L x 0.667
 W/Sq. Ft. Multipliers: 10L x 0.320, 13L x 0.433, 20L x 0.685

