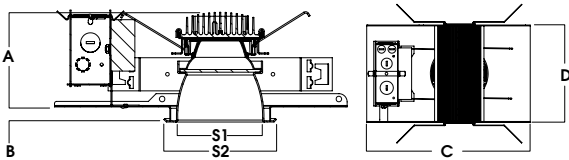
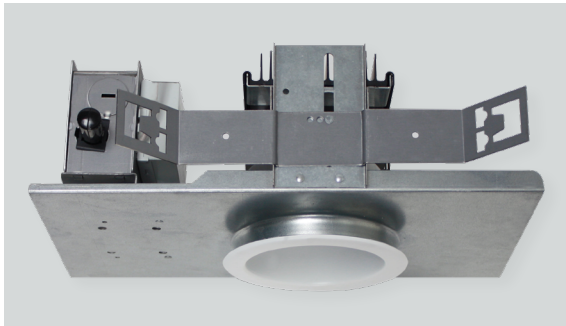
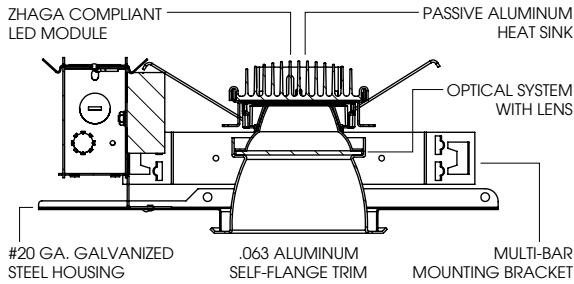


# 4" DEEP CUT OFF DOWNLIGHT

## OS SERIES / 4500 LUMENS MAX



A	B	C	D	S1	S2
4.38	0.625	13.3	7.9	4.0	5.4
111.3 mm	15.9 mm	337.8 mm	200.7 mm	101.6 mm	137.2 mm

### SGE4DLEDOS - TRIM FLANGE / NON-IC RATED

#### APPLICATION

4" LED Recessed open aperture deep cut off downlight for general downlighting.

#### FEATURES

Two-stage optical system for smooth light distribution. Zhaga International Standard LED module for ease of maintenance and replacement. Shallow plenum design. Tool-less LED module, driver and J-Box access. Multi-Bar mounting brackets. BH27 Standard mounting bars included. Posi-lock trim retention torsion springs. Integral 0.625" collar.

#### TRIM FINISH

A variety of architectural powdercoat and anodized finishes are available. Matte white flange is standard.

#### ELECTRONICS

LED module features high brightness white Osram LEDs. 3-step MacAdam Ellipse binning and CRI 84 minimum. Full range of electronic 120V/277V and dimming drivers.

#### CONSTRUCTION

Housing/frame constructed of #20 ga. galvanized steel to resist corrosion. Self-flanged one piece trim spun from 0.063" thick high purity aluminum and finished to specification. Passive machined aluminum heatsink.

#### CODE COMPLIANCE

BAA Compliant. Non-IC rated. ETL certified to meet US and Canadian standards. Suitable for dry or damp locations. Optional Wet location. LM79/LM80/TM21 data available. Manufactured and tested to UL standards No. 1598/8750.

WATTAGE TO LUMENS UPDATE						
CURRENT PART NUMBER EXAMPLE	PREVIOUS PART NUMBER EXAMPLE	SOURCE LUMENS <sup>1</sup>	DELIVERED LUMENS <sup>2</sup>	SYSTEM WATTS	LPW	
SGE4DLEDOS10L	SGE4DLEDOS14W	1100	782	11	71	
SGE4DLEDOS15L	N/A	1500	975	13	75	
SGE4DLEDOS20L	SGE4DLEDOS25W	2000	1666	20	83	
SGE4DLEDOS30L	SGE4DLEDOS35W	3000	2282	28	82	
SGE4DLEDOS45L	N/A	4500	3378	41	82	

SERIES	LUMENS <sup>1</sup>	CCT	DRIVER / VOLTAGE <sup>3</sup>	OPTIONS <sup>4</sup>	TRIM	FINISH	TRIM OPTIONS	
SGE4DLEDOS	10L 1100 Lm	27K 2700K	E_ Electronic Driver DS10_ 10%, 0-10V DO10_ 1%, 0-10V DS2W1 1%, ELV/MLV, 120V DLTE1 1% Lutron® 2-Wire Forward Phase, 120V DL3E_ 1% Lutron® EcoSystem®, Fade EL10_ 1%, eldoLED ED01_ 0.1%, eldoLED DALI_ DALI Control	1 120V 2 277V	BH27 <sup>5</sup> 27" Solid Bars H12 12" - 24" Expandable Bars H06 6" - 12" Expandable Bars CB24 24" C-Channel Bars FS Fusing EB Fixture Painted Black CR Corrosion Resistant PR <sup>6</sup> Deep Ceiling Extension GR Goof Ring ZIG <sup>7</sup> ZigBee Module BLU <sup>7</sup> Bluetooth LE EM <sup>8</sup> 7W Emergency Battery Test Switch Remote AMB Anti-Microbial Finish	AR4224OS 4" Deep Trim Medium Beam	MW <sup>9</sup> Matte White MB Matte Black SG Semi-Diffuse HZ Haze Full Diffuse PT Platinum Silver BZ Bronze OB Oil Rubbed Bronze CH Charcoal AS Anodic Sapphire AN Anodic Natural AC Anodic Champagne AZ Anodic Bronze AK Anodic Black AM Anodic Malachite SN Sun Gold CO Copper Metallic GH Graphite CC <sup>10</sup> Custom Color	SO <sup>11</sup> Micro Prism Solite™ Lens GL Clear Glass Lens FG Frosted Glass Lens GS Gasket WL Wet Location PF <sup>12</sup> Polished Flange AMB Anti-Microbial Finish
	15L 1500 Lm	30K 3000K						
	20L 2000 Lm	35K 3500K						
	30L 3000 Lm	40K 4000K						
	45L 4500 Lm							

EXAMPLE: SGE4DLEDOS20L35KE1/AR4224OSSGSO

NOTES:  
 1 Nominal Source Lumens at 35K 2 Nominal Delivered Lumens at 35K with SG-SO 3 Contact Factory for Additional Options 4 See Product Options Page for Details 5 Standard Bar Hangers 6 Contact Factory  
 7 Order DS101/2 When Specifying Zig or BLU 8 Standard EM 9 Standard Finish 10 Contact Factory for Special Finishes 11 Standard Lens 12 Flange and Reflector Same Finish



PROJECT: \_\_\_\_\_  
 TYPE: \_\_\_\_\_



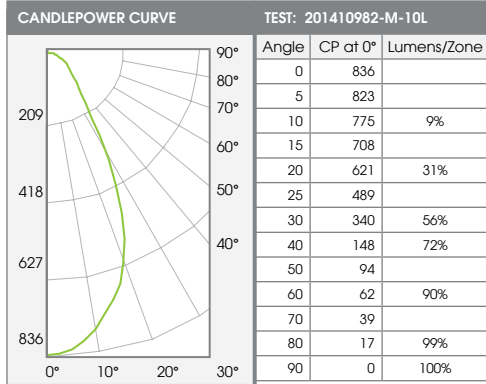
Dimensions and values shown are nominal. Spectrum Lighting continually works to improve products and reserves the right to make changes which may alter the performance or appearance of products.

# 4" DEEP CUT OFF DOWNLIGHT OS SERIES / PHOTOMETRIC DATA

recessed  
fixtures



## SGE4LEDOS10L35KE1-AR4224OSMWSO



Delivered Lumens: 887  
Luminaire Watts: 14.4  
LER: 62

CP @ 0° (Nadir): 836  
Beam Angle: 55°  
Spacing Ratio: 0.86

SINGLE UNIT: PERFORMANCE INITIAL FOOTCANDLES AND BEAM ANGLE DIAMETERS			
Mounting Height*	FC at Center	Diameter of Beam**	FC at Beam**
5.5'	28	5.7'	11
6.5'	20	6.8'	8
7.5'	15	7.8'	6
8.0'	13	8.3'	5
8.5'	12	8.8'	5
9.0'	10	9.4'	4
10.0'	8	10.4'	3
11.0'	7	11.5'	3

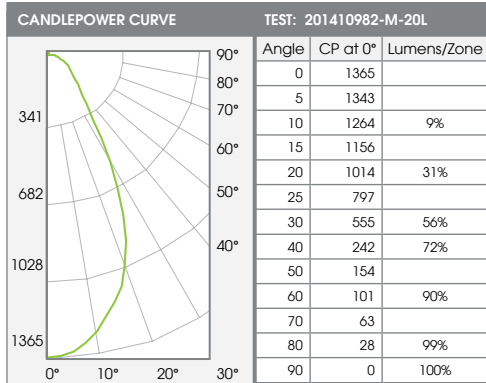
\* From aperture to horizontal surface below.  
\*\* At IESNA defined Beam Angle, to 50% Max. CP.

MULTIPLE UNITS: PERFORMANCE 80/50/20% REFLECTANCES INITIAL FOOTCANDLES AND WATTS PER SQUARE FOOT					
Ceiling Height	Fixture Spacing	RCR 2: Large Room		RCR 4: Medium Room	
		FC*	W/Sq. Ft.	FC*	W/Sq. Ft.
8'	4'	47	0.79	45	0.90
	5'	34	0.56	34	0.68
9'	5'	30	0.51	32	0.64
	6'	21	0.35	25	0.51
10'	5'	27	0.46	24	0.48
	6'	24	0.40	20	0.40
11'	6'	22	0.36	19	0.38
	7'	16	0.27	15	0.29

Delivered Illuminance Rating: (DIR) 59 FC per W/Sq. Ft. 50 FC per W/Sq. Ft.  
\*Average Footcandles at 2.5' above floor.

CCT: 3500° K CRI: 84 CCT Output Factors: 40K 103%, 30K 95%, 27K 89% Multiplier for FC Values at 9W: 0.56

## SGE4LEDOS20L35KE1-AR4224OSMWSO



Delivered Lumens: 1448  
Luminaire Watts: 25.6  
LER: 57

CP @ 0° (Nadir): 1365  
Beam Angle: 55°  
Spacing Ratio: 0.86

SINGLE UNIT: PERFORMANCE INITIAL FOOTCANDLES AND BEAM ANGLE DIAMETERS			
Mounting Height*	FC at Center	Diameter of Beam**	FC at Beam**
6.5'	32	6.8'	13
7.5'	24	7.8'	10
8.0'	21	8.3'	8
8.5'	19	8.8'	7
9.0'	17	9.4'	7
10.0'	14	10.4'	5
11.0'	11	11.5'	4
12.0'	9	12.5'	4

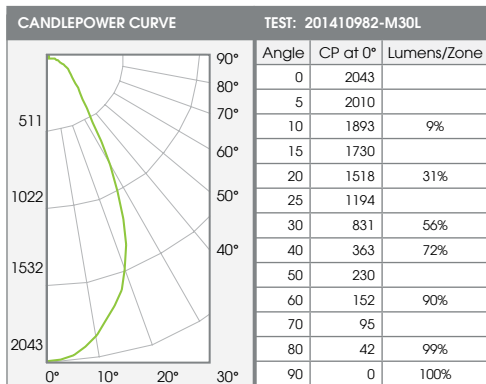
\* From aperture to horizontal surface below.  
\*\* At IESNA defined Beam Angle, to 50% Max. CP.

MULTIPLE UNITS: PERFORMANCE 80/50/20% REFLECTANCES INITIAL FOOTCANDLES AND WATTS PER SQUARE FOOT					
Ceiling Height	Fixture Spacing	RCR 2: Large Room		RCR 4: Medium Room	
		FC*	W/Sq. Ft.	FC*	W/Sq. Ft.
9'	5'	49	0.90	52	1.14
	6'	34	0.62	41	0.90
10'	5'	44	0.81	39	0.85
	6'	39	0.71	32	0.71
11'	6'	36	0.65	31	0.67
	7'	26	0.48	24	0.52
12'	7'	25	0.45	25	0.54
	8'	21	0.39	19	0.40

Delivered Illuminance Rating: (DIR) 54 FC per W/Sq. Ft. 45 FC per W/Sq. Ft.  
\*Average Footcandles at 2.5' above floor.

CCT: 3500° K CRI: 84 CCT Output Factors: 40K 103%, 30K 95%, 27K 89%

## SGE4LEDOS30L35KE1-AR4224OSMWSO



Delivered Lumens: 2168  
Luminaire Watts: 34.7  
LER: 62

CP @ 0° (Nadir): 2043  
Beam Angle: 55°  
Spacing Ratio: 0.86

SINGLE UNIT: PERFORMANCE INITIAL FOOTCANDLES AND BEAM ANGLE DIAMETERS			
Mounting Height*	FC at Center	Diameter of Beam**	FC at Beam**
7.5'	36	7.8'	14
8.0'	32	8.3'	13
8.5'	28	8.8'	11
9.0'	25	9.4'	10
10.0'	20	10.4'	8
11.0'	17	11.5'	7
12.0'	14	12.5'	6
14.0'	10	14.6'	4

\* From aperture to horizontal surface below.  
\*\* At IESNA defined Beam Angle, to 50% Max. CP.

MULTIPLE UNITS: PERFORMANCE 80/50/20% REFLECTANCES INITIAL FOOTCANDLES AND WATTS PER SQUARE FOOT					
Ceiling Height	Fixture Spacing	RCR 2: Large Room		RCR 4: Medium Room	
		FC*	W/Sq. Ft.	FC*	W/Sq. Ft.
10'	5'	66	1.09	59	1.16
	6'	58	0.96	48	0.96
11'	6'	54	0.88	46	0.91
	7'	40	0.65	36	0.71
12'	7'	37	0.61	37	0.73
	8'	32	0.52	28	0.54
14'	7'	37	0.61	33	0.64
	8'	32	0.52	25	0.48

Delivered Illuminance Rating: (DIR) 60 FC per W/Sq. Ft. 50 FC per W/Sq. Ft.  
\*Average Footcandles at 2.5' above floor.

CCT: 3500° K CRI: 84 CCT Output Factors: 40K 103%, 30K 95%, 27K 89%