



4" ROUND DIRECT
WET LOCATION
 GAMMA SERIES

PROJECT: _____
 QUANTITY: _____ TYPE: _____



CW0406PC



CW0412PC



CW0418PC

SERIES	LUMENS ¹	CCT	OPTICS	DRIVER / DIMMING ²	LENS	MOUNTING ³	FINISH ⁴	
CW0406PC	10L	550 Lm	80 CRI	EX Electronic Driver, 120V/277V 1%, 0-10V, 120V/277V	CL Clear Glass Lens SO Micro Prism Solite™ Lens	WM Wall Mount	MW ⁵ Matte White MB ⁵ Matte Black PT ⁵ Platinum Silver CC Custom Color	
	15L	800 Lm	27K 2700K					ND 21° MD 27°
CW0412PC 4" x 12"	20L	1100 Lm	30K 3000K	DO10X DS2W1 ELV/MLV, 120V				
			35K 3500K					WD 49°
			40K 4000K					XW 58°
CW0418PC 4" x 18"			90 CRI				See Page 5 for Full Range of Color Options (83-90165)	
			27HK 2700K					EMER. BAT. OPTIONS EMRM 7W Remote EM EMEN 7W Remote EM with Enclosure
			30HK 3000K					
			35HK 3500K					
			40HK 4000K					

EXAMPLE: CW0406PC15L35KNDEX/CL/WM/MW

NOTES:
 1 Nominal Delivered Lumens at 3500K 2 Consult Factory for Additional Options 3 See Mounting Page for Details on Components and Finishes
 4 See Color Page for More Options/Consult Factory for Special Finishes 5 Standard Finishes



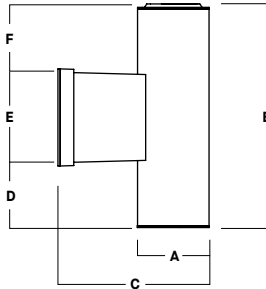


4" ROUND DIRECT WET LOCATION GAMMA SERIES

LUMENS / WATTAGE DATA			
PART NUMBER	DELIVERED LUMENS	SYSTEM WATTS	LPW
CW0412PC 10L	549	6.5	84
CW0412PC 15L	813	9.5	86
CW0412PC 20L	1098	12.9	85

1 Nominal Delivered Lumens at 3500K, 80 CRI, Medium Optic with Clear Lens

DIMENSIONS



Dimensioned with **CW0412PC**

SERIES	A	B	C	D	E	F
CW0406PC	4.1	6.4	8.4	0.4	5.4	0.6
CW0412PC	4.1	12.4	8.4	3.4	5.4	3.6
CW0418PC	4.1	18.4	8.4	6.4	5.4	6.6

APPLICATION

The Gamma Family of Cylinders are a robust offering of point source LED luminaires featuring high efficacies, an assortment of optical control, and installation flexibility, which make them suitable for a wide range of commercial and institutional applications.

ELECTRONICS

Solid-state light engine available in various color temperatures and lumen outputs. Specifiable in 2700K, 3000K, 3500K, 4000K in CRI 80 (Typ.), or 2700K, 3000K, 3500K, 4000K in CRI 90 (Typ.), color accuracy ≤ 3 SDCM. Selection of integral electronic constant current, dimmable drivers available, power factor > 0.9 (Typ). Driver and light engine are field serviceable for future replacement or upgrades. Emergency battery options provide 7W for 90 minutes.

CONSTRUCTION

Seamless cylinder body machined from 6063 extruded aluminum. Trim and top cap are die-cast aluminum. Self-locating trim is secured with self-sealing stainless steel hardware. Nitrile rubber o-rings provide additional ingress protection from water. Passive aluminum heatsink optimized for emitter life and performance. Specular reflectors offered in variety of beam spreads. Lens type must be specified.

MOUNTING

Mounting bracket for direct installation with 4" octagonal junction boxes. Single-piece, seamless die-cast aluminum wall arm. See mounting page for additional information. Contact factory for special installation circumstances.

FINISH

Multi-stage polyester powder-coat process applied on our in-house finishing department. Custom colors also available (contact factory with RAL#). Wall arm will match cylinder finish specification.

CODE COMPLIANCE

ETL Listed. Suitable for wet locations with operation in ambient conditions up to 25°C. 5 year limited warranty on all components. Proudly designed and manufactured in Massachusetts, USA.

SERIES SIZES

CW0406PC



CW0412PC



CW0418PC



STANDARD FINISHES

SHOWN WITH CW0412PC

MW
Matte White



MB
Matte Black

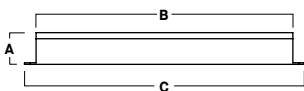


PT
Platinum Silver



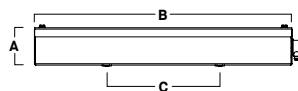
EMERGENCY BATTERY OPTIONS

EMRM* - 7W REMOTE EMERGENCY BATTERY
(50" MAX)



A	B	C
1.3	12.6	13.0

EMEN* - 7W REMOTE EMERGENCY BATTERY
WITH ENCLOSURE (50" MAX)



A	B	C
2.0	17.0	6.2

*OTHER EM BATTERY SIZES AVAILABLE. CONSULT FACTORY





4" ROUND DIRECT

GAMMA SERIES / PHOTOMETRIC DATA

CW04XXPC 20L 35K ND XX CL XX

CANDLEPOWER CURVE TEST SP-01050	INTENSITY CANDELA 0° AZIMUTH	ZONAL LUMENS	SINGLE UNIT: PERFORMANCE DIRECT FOOTCANDLES BASED ON DOWNLIGHT ONLY	MULTIPLE UNITS: PERFORMANCE 80/50/20% REFLECTANCES INITIAL FOOTCANDLES AND WATTS PER SQUARE FOOT									
	0°	0° - 10° 381 34%	Mounting Height AFF	FC at Center on Floor	Beam Diameter	FC at Beam Edge	Ceiling Height	Fixture Spacing	RCR 4		RCR 6		
	0°	5349	0° - 20° 798 71%	8'	84 fc	3.0'	40 fc	14'	3'	FC *	W/Sq. Ft.	FC *	W/Sq. Ft.
	5°	4698	0° - 30° 1049 93%	10'	53 fc	3.7'	25 fc	18'	4'	61	0.72	72	0.92
	15°	1392	0° - 40° 1113 99%	12'	37 fc	4.5'	18 fc	22'	5'	46	0.55	43	0.55
	25°	582	0° - 60° 1122 99%	14'	27 fc	5.2'	13 fc	Delivered Illuminance Rating: (DIR)					
	35°	74	0° - 80° 1126 100%	16'	21 fc	5.9'	10 fc	84 FC per W/Sq. Ft. 78 FC per W/Sq. Ft.					
	45°	5	0° - 90° 1128 100%	20'	13 fc	7.4'	6 fc	2' Suspension Length to luminous aperture Square rooms used for multiple units: RCR 4: Length & Width = Ceiling Ht. - 4.5' x 2.50 RCR 6: Length & Width = Ceiling Ht. - 4.5' x 1.66 * Average Footcandles at 2.5' Above Floor					
	55°	5	Total 1128 100%	24'	9 fc	8.9'	4 fc						
	90°	1		28'	7 fc	10.4'	3 fc						

Delivered Lumens: 1128
Luminaire Watts: 12.9
LER: 87.44

CP at 0° (Nadir): 5349
CRI: 80

Beam Angle: 21°
Spacing Ratio: 0.35

Lumen Multiplier: 10L x 0.50, 15L x 0.74
CCT Multiplier: 27K x 0.97, 30K x 0.98, 40K x 1.04
27HK x 0.78, 30HK x 0.82

CW04XXPC 20L 35K MD XX CL XX

CANDLEPOWER CURVE TEST SP-01047	INTENSITY CANDELA 0° AZIMUTH	ZONAL LUMENS	SINGLE UNIT: PERFORMANCE DIRECT FOOTCANDLES BASED ON DOWNLIGHT ONLY	MULTIPLE UNITS: PERFORMANCE 80/50/20% REFLECTANCES INITIAL FOOTCANDLES AND WATTS PER SQUARE FOOT									
	0°	0° - 10° 299 27%	Mounting Height AFF	FC at Center on Floor	Beam Diameter	FC at Beam Edge	Ceiling Height	Fixture Spacing	RCR 3		RCR 5		
	0°	3785	0° - 20° 744 68%	8'	59 fc	3.9'	27 fc	14'	4'	FC *	W/Sq. Ft.	FC *	W/Sq. Ft.
	5°	3416	0° - 30° 1017 93%	10'	38 fc	4.8'	17 fc	18'	6'	27	0.31	22	0.28
	15°	1614	0° - 40° 1084 99%	12'	26 fc	5.8'	12 fc	22'	8'''	16	0.19	13	0.17
	25°	611	0° - 60° 1093 100%	14'	19 fc	6.7'	9 fc	Delivered Illuminance Rating: (DIR)					
	35°	91	0° - 80° 1097 100%	16'	15 fc	7.7'	7 fc	85 FC per W/Sq. Ft. 78 FC per W/Sq. Ft.					
	45°	6	0° - 90° 1098 100%	20'	9 fc	9.6'	4 fc	2' Suspension Length to luminous aperture Square rooms used for multiple units: RCR 3: Length & Width = Ceiling Ht. - 4.5' x 3.33 RCR 5: Length & Width = Ceiling Ht. - 4.5' x 2.00 * Average Footcandles at 2.5' Above Floor *** Exceeds Spacing Ratio by 2%					
	55°	3	Total 1098 100%	24'	7 fc	11.6'	3 fc						
	90°	1		28'	5 fc	13.5'	2 fc						

Delivered Lumens: 1098
Luminaire Watts: 12.9
LER: 85.12

CP at 0° (Nadir): 3785
CRI: 80

Beam Angle: 27°
Spacing Ratio: 0.45

Lumen Multiplier: 10L x 0.50, 15L x 0.74
CCT Multiplier: 27K x 0.97, 30K x 0.98, 40K x 1.04
27HK x 0.78, 30HK x 0.82

CW04XXPC 20L 35K WD XX CL XX

CANDLEPOWER CURVE TEST SP-01072	INTENSITY CANDELA 0° AZIMUTH	ZONAL LUMENS	SINGLE UNIT: PERFORMANCE DIRECT FOOTCANDLES BASED ON DOWNLIGHT ONLY	MULTIPLE UNITS: PERFORMANCE 80/50/20% REFLECTANCES INITIAL FOOTCANDLES AND WATTS PER SQUARE FOOT									
	0°	0° - 10° 190 16%	Mounting Height AFF	FC at Center on Floor	Beam Diameter	FC at Beam Edge	Ceiling Height	Fixture Spacing	RCR 2		RCR 4		
	0°	2017	0° - 20° 643 53%	8'	32 fc	7.3'	12 fc	14'	6'	FC *	W/Sq. Ft.	FC *	W/Sq. Ft.
	5°	2015	0° - 30° 1071 89%	10'	20 fc	9.1'	8 fc	18'	8'	17	0.18	16	0.18
	15°	1633	0° - 40° 1190 99%	12'	14 fc	10.9'	5 fc	22'	10'	13	0.14	9	0.11
	25°	963	0° - 60° 1198 100%	14'	10 fc	12.7'	4 fc	Delivered Illuminance Rating: (DIR)					
	35°	144	0° - 80° 1202 100%	16'	8 fc	14.6'	3 fc	96 FC per W/Sq. Ft. 86 FC per W/Sq. Ft.					
	45°	5	0° - 90° 1203 100%	20'	5 fc	18.2'	2 fc	2' Suspension Length to luminous aperture Square rooms used for multiple units: RCR 2: Length & Width = Ceiling Ht. - 4.5' x 5.00 RCR 4: Length & Width = Ceiling Ht. - 4.5' x 2.50 * Average Footcandles at 2.5' Above Floor					
	55°	2	Total 1203 100%	24'	4 fc	21.8'	1 fc						
	90°	1		28'	3 fc	25.5'	1 fc						

Delivered Lumens: 1203
Luminaire Watts: 12.9
LER: 93.26

CP at 0° (Nadir): 2017
CRI: 80

Beam Angle: 49°
Spacing Ratio: 0.77

Lumen Multiplier: 10L x 0.50, 15L x 0.74
CCT Multiplier: 27K x 0.97, 30K x 0.98, 40K x 1.04
27HK x 0.78, 30HK x 0.82





4" ROUND DIRECT

GAMMA SERIES / PHOTOMETRIC DATA

CW04XXPC 20L 35K XW XX CL XX

CANDLEPOWER CURVE TEST SP-01074	INTENSITY CANDELA 0° AZIMUTH	ZONAL LUMENS		SINGLE UNIT: PERFORMANCE DIRECT FOOTCANDLES BASED ON DOWNLIGHT ONLY				MULTIPLE UNITS: PERFORMANCE 80/50/20% REFLECTANCES INITIAL FOOTCANDLES AND WATTS PER SQUARE FOOT							
		0°	0° - 10°	147	12%	Mounting Height AFF	FC at Center on Floor	Beam Diameter	FC at Beam Edge	Ceiling Height	Fixture Spacing	RCR 1		RCR 3	
	0°	1547	0° - 10°	147	12%	8'	24 fc	8.7'	8 fc	14'	8'	21	0.21	19	0.21
	5°	1544	0° - 20°	556	45%	10'	15 fc	10.9'	5 fc	18'	10'	12	0.12	9	0.10
	15°	1473	0° - 30°	1039	85%	12'	11 fc	13.1'	4 fc	22'	12'	9	0.08	9	0.09
	25°	1117	0° - 40°	1208	98%	14'	8 fc	15.3'	3 fc	Delivered Illuminance Rating: (DIR)					
	35°	232	0° - 60°	1222	100%	16'	6 fc	17.5'	2 fc	103 FC per W/Sq. Ft.					
	45°	8	0° - 80°	1226	100%	20'	4 fc	21.9'	1 fc	92 FC per W/Sq. Ft.					
	55°	3	0° - 90°	1227	100%	24'	3 fc	26.2'	1 fc	2' Suspension Length to luminous aperture Square rooms used for multiple units: RCR 1: Length & Width = Ceiling Ht. - 4.5' x 10.00 RCR 3: Length & Width = Ceiling Ht. - 4.5' x 3.33 * Average Footcandles at 2.5' Above Floor					
	90°	1	Total	1227	100%	28'	2 fc	30.6'	1 fc						

Delivered Lumens: 1227
Luminaire Watts: 12.9
LER: 95.12

CP at 0° (Nadir): 1547
CRI: 80

Beam Angle: 58°
Spacing Ratio: 0.95

Lumen Multiplier: 10L x 0.50, 15L x 0.74
CCT Multiplier: 27K x 0.97, 30K x 0.98, 40K x 1.04
27HK x 0.78, 30HK x 0.82

