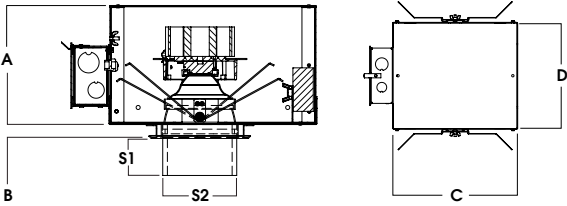
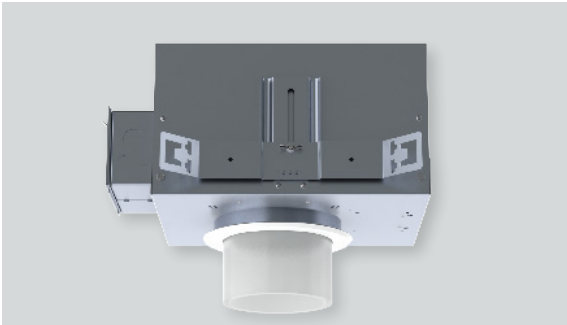


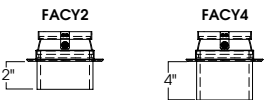


# 6" ROUND DOWNLIGHT / IC RATED

ILLUMITECH DECORATIVE / 2000 LUMENS



A	B	C	D	TRIM	S1	S2	CUT OUT
6.4	0.625	10L-13L: 13.2	9.5	FACY2	2.0	6.0	6.4
162.6 mm	15.2 mm	20L: 19.2	241.3 mm	FACY4	4.0	6.0	162.6 mm



## RDFI6XT - DECORATIVE TRIM / IC RATED

### APPLICATION

Illumitech decorative recessed series offer two lengths of decorative acrylic cylinder (FACY). Cylinder glows softly to create ambiance.

### FEATURES

Two-stage optical system with regressed Solite lens for smooth light distribution. Quick change LED module with interchangeable optics for job site adjustment and fixture maintenance. Shallow plenum design. Tool-less driver and j-box access. Posi-lock trim retention torsion springs.

### TRIM FINISH

Decorative cylinder is soft etched UV stabilized cast machined acrylic. Matte White flange is standard.

### ELECTRONICS

LED system features Xicato LED module with proprietary phosphor technology that provides consistent, stable color with CCT control of +/- 100K over life of the light engine. Base CRI is 83 with 2-step MacAdam Ellipse binning. High CRI is 98 with 1x2-step MacAdam Ellipse binning. Variety of electronic 120V/277V and dimming drivers.

### CONSTRUCTION

Housing/frame constructed of #20 ga. galvanized steel to resist corrosion. Self-Flanged one piece trim spun from 0.063" thick high purity aluminum and finished to specification.

### CODE COMPLIANCE

BAA Compliant. IC rated. ETL certified to meet US and Canadian standards. Suitable for dry or damp locations. Optional Wet location. Manufactured and tested to UL standards No. 1598/8750.

WATTAGE TO LUMENS UPDATE					
CURRENT PART NUMBER EXAMPLE	PREVIOUS PART NUMBER EXAMPLE	SOURCE LUMENS <sup>1</sup>	DELIVERED LUMENS <sup>2</sup>	SYSTEM WATTS	LPW
RDFI6XT10L	RDFI6LEDX15W	1000	655	11.1	59.0
RDFI6XT13L	RDFI6LEDX20W	1300	882	15.0	58.8
RDFI6XT20L	RDFI6LEDX33W	2000	1357	23.7	57.3

SERIES	LUMENS <sup>1</sup>	CCT	OPTICS	DRIVER / VOLTAGE <sup>4</sup>	OPTIONS <sup>5</sup>	TRIM	COLOR	CAST ACRYLIC	TRIM OPTIONS		
RDFI6XT	83 CRI		<b>XN<sup>3</sup></b> 10° <b>ND</b> 27° <b>MD</b> 40° <b>WD</b> 45° <b>XW</b> 50°	<b>E_</b> Electronic Driver <b>DS10_</b> 10% 0-10V <b>DO10_</b> 1% 0-10V <b>DS2W1</b> 1% ELV/MLV, 120V <b>DLTE1</b> 1% Lutron® 2-Wire Forward Phase, 120V <b>DL3E_</b> 1% Lutron® EcoSystem®, Fade <b>EL10_</b> 1%, eldoLED <b>ED01_</b> 0.1%, eldoLED	<b>1</b> 120V <b>2</b> 277V <b>BH27<sup>6</sup></b> 27" Solid Bars <b>H12</b> 12" - 24" Expandable Bars <b>H06</b> 6" - 12" Expandable Bars <b>CB24</b> 24" C-Channel Bars <b>EMRM</b> Remote EM Battery Pack <b>FS</b> Fusing <b>EB</b> Black Housing <b>CR</b> Corrosion Resistant <b>PR<sup>7</sup></b> Deep Ceiling Extension <b>GR</b> Goof Ring <b>CCEA</b> Chicago Ceiling Plenum Rated <b>AMB</b> Anti Microbial Finish	<b>RD6FXTMWSO<sup>8</sup></b>	<b>FA</b> Frosted Clear	<b>CY2</b> 2" Deep Acrylic <b>CY4</b> 4" Deep Acrylic	<b>GS</b> Gasket <b>WL</b> Wet Location		
	<b>10L</b>	1000 Lm								<b>27K</b>	2700K
	<b>13L</b>	1300 Lm								<b>30K</b>	3000K
	<b>20L</b>	2000 Lm								<b>35K</b>	3500K
										<b>40K</b>	4000K
	98 CRI										
	<b>10L</b>	1000 Lm								<b>27HK</b>	2700K
	<b>13L</b>	1300 Lm								<b>30HK</b>	3000K
	<b>20L</b>	2000 Lm								<b>35HK</b>	3500K
										<b>40HK</b>	4000K

EXAMPLE: RDFI6XT13L35KMDE1/H12/RD6FXTMWSOFACY4

NOTES:  
 1 Nominal Source Lumens at Any CCT 2 Nominal Delivered Lumens 83CRI at Any CCT with MD Beam with FACY4 3 XN 13L Max at 83 and 98 CRI 4 Contact Factory for Additional Options 5 See Product Options Page for Details  
 6 Standard Bar Hangers 7 Contact Factory 8 "F" Indicates Self-Flange Trim, Matte White Standard



PROJECT: \_\_\_\_\_  
 TYPE: \_\_\_\_\_



Dimensions and values shown are nominal. Spectrum Lighting continually works to improve products and reserves the right to make changes which may alter the performance or appearance of products.