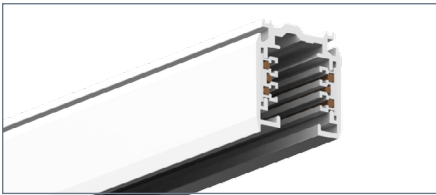




# TEK/HTEK ARCHITECTURAL TRACK & ACCESSORIES

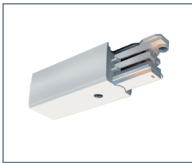
SURFACE/SUSPENDED - 120V or 277V - 2 CIRCUIT / 2 NEUTRAL



## TEK & HTEK TRACK

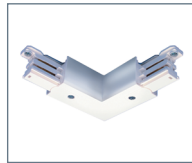
Our ISO 9002-compliant Architectural Grade lighting offers sleek design, easy installation, and top-tier quality. Illuminate confidently with UL-listed fixtures.

- TEK44-2** - 4' Track, Black, 120V    **HTEK44-2** - 4' Track, Black, 277V
- TEK44-3** - 4' Track, White, 120V    **HTEK44-3** - 4' Track, White, 277V
- TEK48-2** - 8' Track, Black, 120V    **HTEK48-2** - 8' Track, Black, 277V
- TEK48-3** - 8' Track, White, 120V    **HTEK48-3** - 8' Track, White, 277V



### LIVE END

- TEK11-2** - 120V, Black
- TEK11-3** - 120V, White
- HTEK11-2** - 277V, Black
- HTEK11-3** - 277V, White



### "L" CONNECTOR

- TEK34-2** - 120V, Black
- TEK34-3** - 120V, White
- HTEK34-2** - 277V, Black
- HTEK34-3** - 277V, White



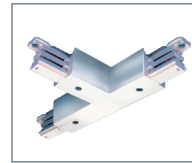
### LIVE MIDDLE FEED

- TEK14-2** - 120V, Black
- TEK14-3** - 120V, White
- HTEK14-2** - 277V, Black
- HTEK14-3** - 277V, White



### DEAD END

- TEK41-2** - 120V, Black
- TEK41-3** - 120V, White
- HTEK41-2** - 277V, Black
- HTEK41-3** - 277V, White



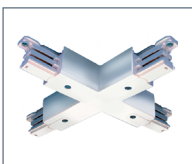
### "T" CONNECTOR

- LEFT
- TEK40-2** - 120V, Black
  - TEK40-3** - 120V, White
  - HTEK40-2** - 277V, Black
  - HTEK40-3** - 277V, White
- RIGHT
- TEK39-2** - 120V, Black
  - TEK39-3** - 120V, White
  - HTEK39-2** - 277V, Black
  - HTEK39-3** - 277V, White



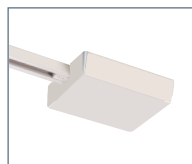
### LINEAR COUPLER

- TEK21-2** - 120V, Black
- TEK21-3** - 120V, White
- HTEK21-2** - 277V, Black
- HTEK21-3** - 277V, White



### "X" CONNECTOR

- TEK38-2** - 120V, Black
- TEK38-3** - 120V, White
- HTEK38-2** - 277V, Black
- HTEK38-3** - 277V, White



### CURRENT LIMITER

- TEK11CL-2** - 120V, Black
- TEK11CL-3** - 120V, White
- HTEK11CL-2** - 277V, Black
- HTEK11CL-3** - 277V, White

### AMPERAGE

Consult Factory for Other Wattages

- 1A** - 120W
- 2A** - 210W
- 5A** - 500W

### HOW TO ORDER CURRENT LIMITER

CL		AMP
	-	
<small>EXAMPLE</small>		
<b>TEK11CL-2</b>	-	<b>1A</b>

